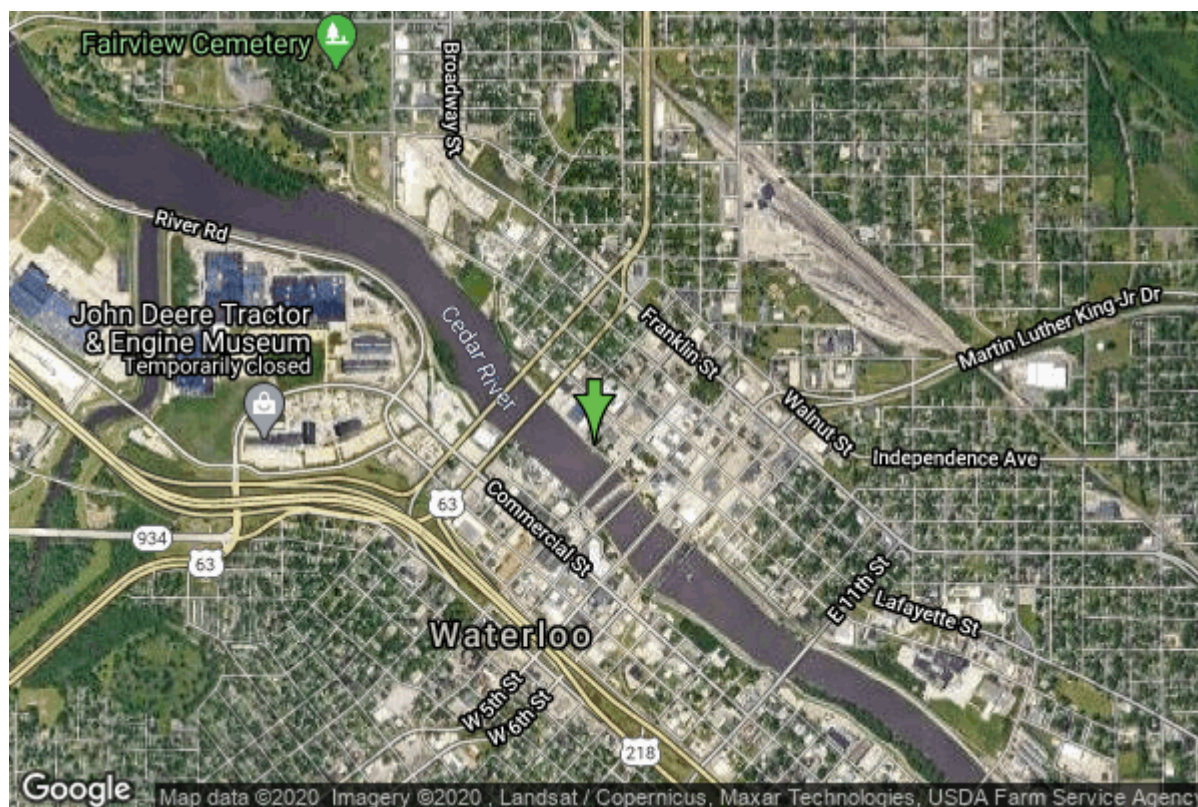


Well W#106 Information



Date Received		State	Iowa
Owner Name	Waterloo, City Of	County	Black Hawk
Alt Name	Well #1 (Same well as W# 58)	Quadrangle	Waterloo South, Iowa
WNumber	106	Township	T89N
PWTS ID	0	Range	R13W
PWS ID	790074	Section	23
Storet ID	0	Quarter	SE SE SE
SDWIS ID	0	Latitude	42.4987660000
USGS ID	0	Longitude	-92.3382780000
Project	Source Water Protection	Accuracy	
Operator	Unknown	UTM X	554372
		UTM Y	4705368

Site Type	Drilled hole	Drilling Company	Unknown
Well Status	Not Used	Drilling Date	01/01/1905
Field Located	No	Drilling Method	Unknown
Elevation	840 ft	Bedrock Depth	0 ft
Elevation Accuracy	Digital Elevation Model Accurate to 5 ft	Well Depth	1373 ft
Landscape Position	Unknown	Total Depth	1373 ft
		Well Types	Municipal
		Aquifers	Cambrian-Ordovician, Ordovician (abv St. Peter)

Casing Construction Information

Date	01/01/1905	Casing Type	Steel
Start Depth	0.00 ft	End Depth	0.00 ft
Diameter	20.00 in	Amount	35.00 ft
Comments			

Date	01/01/1905	Casing Type	Steel
Start Depth	0.00 ft	End Depth	0.00 ft
Diameter	15.00 in	Amount	106.00 ft
Comments			

Date	01/01/1905	Casing Type	Steel
Start Depth	0.00 ft	End Depth	0.00 ft
Diameter	7.00 in	Amount	122.00 ft
Comments			

Log Information

Date	04/01/1960
Log Types	Strip log
Prepared By	Campbell, Russell Boone
Comments	

Date	08/05/1949
Log Types	Strip log
Prepared By	Screven, Ruth E. Wehner
Comments	

Stratigraphy Information

System	Unknown		
Series			
Group			
Formation			
Member			
Submember			
Start Depth	0.00 ft	End Depth	95.00 ft
Contact Accuracy			
Penetration			
Primary Lithology		Percent	
Secondary Lithology		Percent	
Tertiary Lithology		Percent	
Comments			

System	Devonian
---------------	----------

Series			
Group	Cedar Valley		
Formation	Little Cedar		
Member	Solon		
Submember			
Start Depth	95.00 ft	End Depth	105.00 ft
Contact Accuracy			
Penetration			
Primary Lithology	Limestone	Percent	0
Secondary Lithology	Dolomite	Percent	0
Tertiary Lithology		Percent	
Comments			

System	Devonian		
Series			
Group	Wapsipinicon		
Formation	Pinicon Ridge		
Member	Davenport		
Submember			
Start Depth	105.00 ft	End Depth	120.00 ft
Contact Accuracy			
Penetration			
Primary Lithology	Limestone	Percent	100
Secondary Lithology		Percent	
Tertiary Lithology		Percent	
Comments			

System	Devonian		
Series			
Group	Wapsipinicon		
Formation	Pinicon Ridge		
Member	Kenwood		
Submember			
Start Depth	120.00 ft	End Depth	157.00 ft
Contact Accuracy			
Penetration			
Primary Lithology	Limestone	Percent	0
Secondary Lithology	Dolomite	Percent	0
Tertiary Lithology	Sandstone	Percent	0
Comments			

System	Silurian		
Series			
Group			
Formation			
Member			
Submember			
Start Depth	157.00 ft	End Depth	175.00 ft
Contact Accuracy			

Penetration			
Primary Lithology	Dolomite	Percent	100
Secondary Lithology		Percent	
Tertiary Lithology		Percent	
Comments			

System	Silurian		
Series			
Group			
Formation	Blanding		
Member			
Submember			
Start Depth	175.00 ft	End Depth	250.00 ft
Contact Accuracy			
Penetration			
Primary Lithology	Dolomite	Percent	0
Secondary Lithology	Chert/Chalcedony	Percent	0
Tertiary Lithology		Percent	
Comments			

System	Silurian		
Series			
Group			
Formation	Tete Des Morts/Mosalem Undiff.		
Member			
Submember			
Start Depth	250.00 ft	End Depth	260.00 ft
Contact Accuracy			
Penetration			
Primary Lithology	Dolomite	Percent	100
Secondary Lithology		Percent	
Tertiary Lithology		Percent	
Comments			

System	Ordovician		
Series			
Group			
Formation	Maquoketa		
Member			
Submember			
Start Depth	260.00 ft	End Depth	390.00 ft
Contact Accuracy			
Penetration			
Primary Lithology	Shale	Percent	0
Secondary Lithology	Dolomite	Percent	0
Tertiary Lithology	Limestone	Percent	0
Comments			

System	Ordovician		
---------------	------------	--	--

Series
Group
Formation Maquoketa
Member Ft. Atkinson Limestone
Submember
Start Depth 390.00 ft **End Depth** 450.00 ft
Contact Accuracy
Penetration
Primary Lithology Shale **Percent** 0
Secondary Lithology Dolomite **Percent** 0
Tertiary Lithology Limestone **Percent** 0
Comments

System Ordovician
Series
Group
Formation Maquoketa
Member Elgin Limestone
Submember
Start Depth 450.00 ft **End Depth** 490.00 ft
Contact Accuracy
Penetration
Primary Lithology Shale **Percent** 100
Secondary Lithology **Percent**
Tertiary Lithology **Percent**
Comments

System Unknown
Series
Group
Formation
Member
Submember
Start Depth 490.00 ft **End Depth** 605.00 ft
Contact Accuracy
Penetration
Primary Lithology Limestone **Percent** 0
Secondary Lithology Chert/Chalcedony **Percent** 0
Tertiary Lithology Dolomite **Percent** 0
Comments

System Ordovician
Series
Group Galena
Formation Dunleith
Member
Submember
Start Depth 605.00 ft **End Depth** 715.00 ft
Contact Accuracy

Penetration			
Primary Lithology	Limestone	Percent	0
Secondary Lithology	Chert/Chalcedony	Percent	0
Tertiary Lithology	Dolomite	Percent	0
Comments			

System	Ordovician		
Series			
Group	Galena		
Formation	Decorah		
Member			
Submember			
Start Depth	715.00 ft	End Depth	720.00 ft
Contact Accuracy			
Penetration			
Primary Lithology	Limestone	Percent	100
Secondary Lithology		Percent	
Tertiary Lithology		Percent	
Comments			

System	Ordovician		
Series			
Group	Galena		
Formation	Platteville		
Member			
Submember			
Start Depth	720.00 ft	End Depth	815.00 ft
Contact Accuracy			
Penetration			
Primary Lithology	Limestone	Percent	0
Secondary Lithology	Dolomite	Percent	0
Tertiary Lithology	Shale	Percent	0
Comments			

System	Ordovician		
Series			
Group	Ancell		
Formation	St. Peter Sandstone		
Member			
Submember			
Start Depth	815.00 ft	End Depth	862.00 ft
Contact Accuracy			
Penetration			
Primary Lithology	Sandstone	Percent	100
Secondary Lithology		Percent	
Tertiary Lithology		Percent	
Comments			

System	Ordovician		
---------------	------------	--	--

Series			
Group	Prairie Du Chien		
Formation	Shakopee		
Member	Willow River		
Submember			
Start Depth	862.00 ft	End Depth	1030.00 ft
Contact Accuracy			
Penetration			
Primary Lithology	Dolomite	Percent	0
Secondary Lithology	Sandstone	Percent	0
Tertiary Lithology	Chert/Chalcedony	Percent	0
Comments			

System	Ordovician		
Series			
Group	Prairie Du Chien		
Formation	Shakopee		
Member	New Richmond		
Submember			
Start Depth	1030.00 ft	End Depth	1075.00 ft
Contact Accuracy			
Penetration			
Primary Lithology	Dolomite	Percent	0
Secondary Lithology	Sandstone	Percent	0
Tertiary Lithology		Percent	
Comments			

System	Ordovician		
Series			
Group	Prairie Du Chien		
Formation	Oneota		
Member			
Submember			
Start Depth	1075.00 ft	End Depth	1205.00 ft
Contact Accuracy			
Penetration			
Primary Lithology	Dolomite	Percent	0
Secondary Lithology	Chert/Chalcedony	Percent	0
Tertiary Lithology		Percent	
Comments			

System	Cambrian		
Series			
Group			
Formation	Jordan		
Member			
Submember			
Start Depth	1205.00 ft	End Depth	1270.00 ft
Contact Accuracy			

Penetration			
Primary Lithology	Sandstone	Percent	0
Secondary Lithology	Dolomite	Percent	0
Tertiary Lithology		Percent	
Comments			

System	Cambrian		
Series			
Group			
Formation	St. Lawrence		
Member			
Submember			
Start Depth	1270.00 ft	End Depth	1373.00 ft
Contact Accuracy			
Penetration			
Primary Lithology	Dolomite	Percent	0
Secondary Lithology	Chert/Chalcedony	Percent	0
Tertiary Lithology		Percent	
Comments			

Water Production Information

Date	01/01/1905	Start Time	
Aquifer	Unknown		
Static Water Level	-20.00 ft	Yield	0 gallons per minute
Pumping Water Level	0 ft	Yield Method	Unknown
Measurement	Unknown	Pump Test	Yes
Pump Method	Unknown	Duration	0 mins
Comments			

Chip Storage Information

Date		Bin	
Storage	WB2-6	Number of Samples	85
Number of Boxes	1	Sample Gaps	0-100
Sample Intervals	0	Sample Bottom	1373 ft
Sample Top	100 ft	Washed Bottom	0 ft
Washed Top	0 ft		
Duplicate Storage			
Comments			

<https://www.iuhr.uiowa.edu/igs/geosam/well/106/general-information>