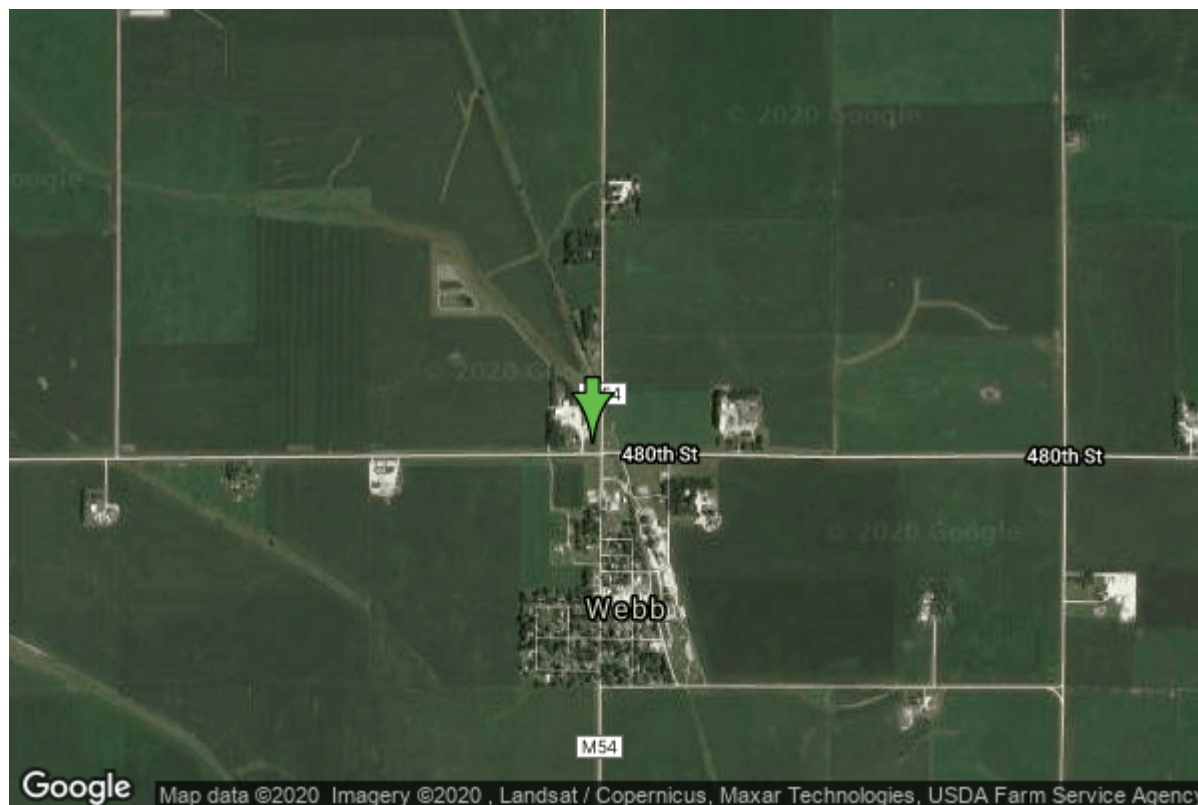


# Well W#1064 Information



<b>Date Received</b>		<b>State</b>	Iowa
<b>Owner Name</b>	Webb, City Of	<b>County</b>	Clay
<b>Alt Name</b>		<b>Quadrangle</b>	Webb, Iowa
<b>WNumber</b>	1064	<b>Township</b>	T94N
<b>PWTS ID</b>	0	<b>Range</b>	R35W
<b>PWS ID</b>	2178092	<b>Section</b>	17
<b>Storet ID</b>	0	<b>Quarter</b>	SW SW SW
<b>SDWIS ID</b>	0	<b>Latitude</b>	42.9537030000
<b>USGS ID</b>	0	<b>Longitude</b>	-95.0126320000
<b>Project</b>	Source Water Protection	<b>Accuracy</b>	
<b>Operator</b>	Unknown	<b>UTM X</b>	335828
		<b>UTM Y</b>	4757639

<b>Site Type</b>	Drilled hole	<b>Drilling Company</b>	Unknown
<b>Well Status</b>	Not Used	<b>Drilling Date</b>	12/20/1938
<b>Field Located</b>	No	<b>Drilling Method</b>	Unknown
<b>Elevation</b>	1360 ft	<b>Bedrock Depth</b>	0 ft
<b>Elevation Accuracy</b>	Digital Elevation Model Accurate to 5 ft	<b>Well Depth</b>	22 ft
<b>Landscape Position</b>	Unknown	<b>Total Depth</b>	22 ft
		<b>Well Types</b>	Municipal
		<b>Aquifers</b>	Pleistocene

## Casing Construction Information

<b>Date</b>	12/20/1938	<b>Casing Type</b>	Steel
<b>Start Depth</b>	0.00 ft	<b>End Depth</b>	12.00 ft

<b>Diameter</b>	10.00 in	<b>Amount</b>	16.20 ft
<b>Comments</b>			

## Screen Construction Information

<b>Date</b>	12/20/1938		
<b>Screen Type</b>	Steel	<b>Slot Size</b>	0.00
<b>Start Depth</b>	12.00 ft	<b>End Depth</b>	22.00 ft
<b>Diameter</b>	12.00 in	<b>Amount</b>	10 ft
<b>Comments</b>			

## Log Information

<b>Date</b>	
<b>Log Types</b>	Unknown
<b>Prepared By</b>	Unknown
<b>Comments</b>	

---

<b>Date</b>	
<b>Log Types</b>	Strip log
<b>Prepared By</b>	Unknown
<b>Comments</b>	

## Stratigraphy Information

<b>System</b>	Quaternary		
<b>Series</b>	Pleistocene Series		
<b>Group</b>	Wisconsinan Episode		
<b>Formation</b>	Dows		
<b>Member</b>			
<b>Submember</b>			
<b>Start Depth</b>	0.00 ft	<b>End Depth</b>	8.00 ft
<b>Contact Accuracy</b>			
<b>Penetration</b>			
<b>Primary Lithology</b>	Sand And Gravel	<b>Percent</b>	50
<b>Secondary Lithology</b>	Soil Or Fill	<b>Percent</b>	50
<b>Tertiary Lithology</b>		<b>Percent</b>	
<b>Comments</b>			

---

<b>System</b>	Quaternary		
<b>Series</b>	Pleistocene Series		
<b>Group</b>	Wisconsinan Episode		
<b>Formation</b>	Dows		
<b>Member</b>			
<b>Submember</b>			
<b>Start Depth</b>	8.00 ft	<b>End Depth</b>	18.00 ft

<b>Contact Accuracy Penetration</b>			
<b>Primary Lithology</b>	Till - Oxidized And Unleached	<b>Percent</b>	100
<b>Secondary Lithology</b>		<b>Percent</b>	
<b>Tertiary Lithology</b>		<b>Percent</b>	
<b>Comments</b>			

<b>System</b>	Quaternary		
<b>Series</b>	Pleistocene Series		
<b>Group</b>	Wisconsinan Episode		
<b>Formation</b>	Dows		
<b>Member</b>			
<b>Submember</b>			
<b>Start Depth</b>	18.00 ft	<b>End Depth</b>	20.00 ft
<b>Contact Accuracy Penetration</b>			
<b>Primary Lithology</b>	Till - Oxidized And Unleached	<b>Percent</b>	60
<b>Secondary Lithology</b>	Till - Unoxidized And Unleached	<b>Percent</b>	40
<b>Tertiary Lithology</b>		<b>Percent</b>	
<b>Comments</b>			

## Water Production Information

<b>Date</b>	12/20/1938	<b>Start Time</b>	
<b>Aquifer</b>	Unknown		
<b>Static Water Level</b>	5.00 ft	<b>Yield</b>	10 gallons per minute
<b>Pumping Water Level</b>	21 ft	<b>Yield Method</b>	Unknown
<b>Measurement</b>	Unknown	<b>Pump Test</b>	No
<b>Pump Method</b>	Unknown	<b>Duration</b>	0 mins
<b>Comments</b>			

## Chip Storage Information

<b>Date</b>		<b>Bin</b>	
<b>Storage</b>	WG3-1	<b>Number of Samples</b>	8
<b>Number of Boxes</b>	1	<b>Sample Gaps</b>	
<b>Sample Intervals</b>	0	<b>Sample Bottom</b>	22 ft
<b>Sample Top</b>	0 ft	<b>Washed Bottom</b>	0 ft
<b>Washed Top</b>	0 ft		
<b>Duplicate Storage</b>			
<b>Comments</b>			