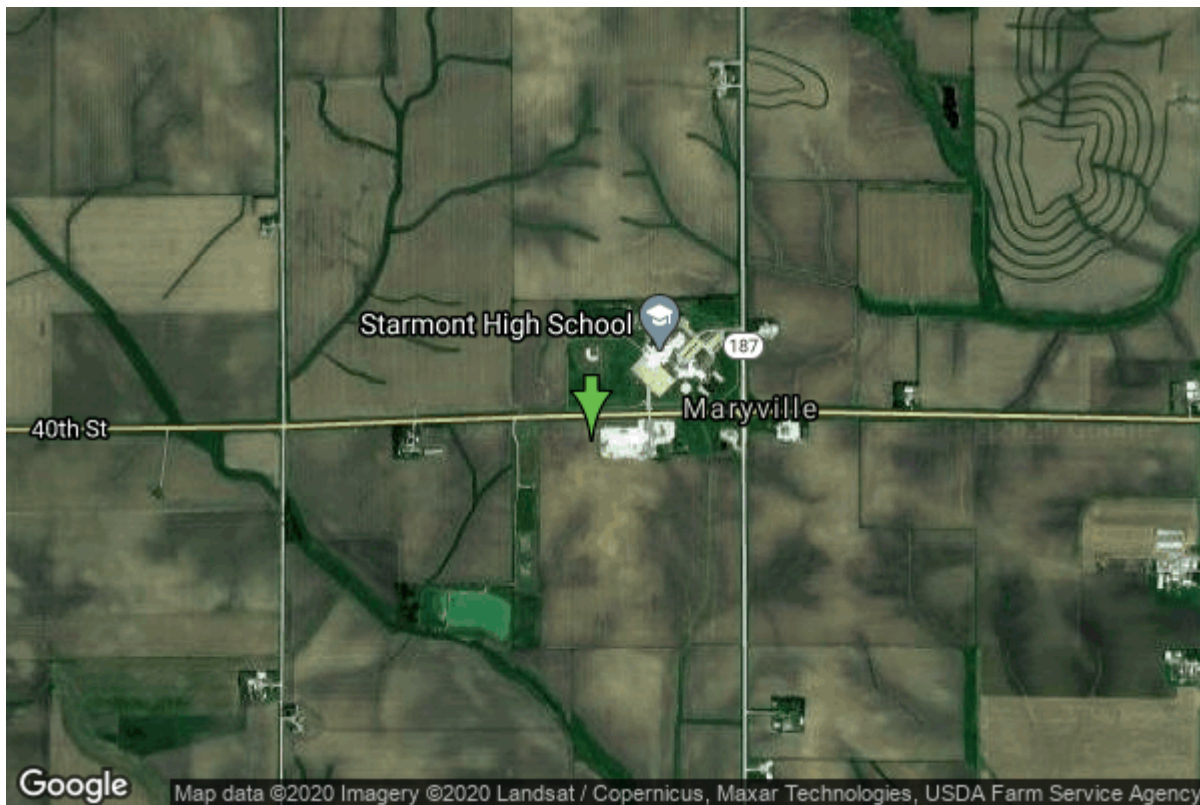


Well W#10988 Information



Date Received		State	Iowa
Owner Name	Associated Milk Producer	County	Fayette
Alt Name	ASSOC MILK PRODUCER- ARLINGTON	Quadrangle	Arlington, Iowa
		Township	T91N
		Range	R7W
WNumber	10988	Section	22
PWTS ID	0	Quarter	NE NW NE
PWS ID	3307117	Latitude	42.6866660000
Storet ID	0	Longitude	-91.6515450000
SDWIS ID	2410557	Accuracy	
USGS ID	0	UTM X	610468
Project	Source Water Protection	UTM Y	4726902
Operator	Unknown		

Site Type	Drilled hole	Drilling Company	Hoeg & Ames (H.M. White)
Well Status	Active		
Field Located	No	Drilling Date	06/01/1959
Elevation	1139 ft	Drilling Method	Cable
Elevation Accuracy	Digital Elevation Model Accurate to 5 ft	Bedrock Depth	130 ft
		Well Depth	188 ft
Landscape Position	Hillside	Total Depth	188 ft
		Well Types	Commercial, Public Supply
		Aquifers	Silurian

Casing Construction Information

Date	06/01/1959	Casing Type	Steel
Start Depth	0.00 ft	End Depth	0.00 ft
Diameter	12.00 in	Amount	136.00 ft
Comments			

Log Information

Date	07/14/1961
Log Types	Strip log
Prepared By	Unknown
Comments	

Date	
Log Types	Drillers log
Prepared By	Associated Milk Producer
Comments	

Stratigraphy Information

System	Quaternary		
Series	Pleistocene Series		
Group	Pre-Illinoian		
Formation			
Member			
Submember			
Start Depth	0.00 ft	End Depth	130.00 ft
Contact Accuracy			
Penetration			
Primary Lithology	Till	Percent	100
Secondary Lithology		Percent	
Tertiary Lithology		Percent	
Comments			

System	Silurian		
Series			
Group			
Formation			
Member			
Submember			
Start Depth	130.00 ft	End Depth	180.00 ft
Contact Accuracy			
Penetration			
Primary Lithology	Dolomite	Percent	0
Secondary Lithology	Chert/Chalcedony	Percent	0

Tertiary Lithology		Percent	
Comments			
System	Ordovician		
Series			
Group			
Formation	Maquoketa		
Member	Neda		
Submember			
Start Depth	180.00 ft	End Depth	187.00 ft
Contact Accuracy			
Penetration			
Primary Lithology	Shale	Percent	100
Secondary Lithology		Percent	
Tertiary Lithology		Percent	
Comments			

System	Ordovician		
Series			
Group			
Formation	Maquoketa		
Member	Brainard Shale		
Submember			
Start Depth	187.00 ft	End Depth	188.00 ft
Contact Accuracy			
Penetration			
Primary Lithology	Shale	Percent	100
Secondary Lithology		Percent	
Tertiary Lithology		Percent	
Comments			

Water Production Information

Date	06/01/1959	Start Time	
Aquifer	Unknown		
Static Water Level	61.00 ft	Yield	615 gallons per minute
Pumping Water Level	93 ft	Yield Method	Unknown
Measurement	Unknown	Pump Test	Yes
Pump Method	Pumped	Duration	340 mins
Comments			

Chip Storage Information

Date	07/22/1959		
Storage	DC5-3	Bin	
Number of Boxes	1	Number of Samples	38
Sample Intervals	5	Sample Gaps	

Sample Top	0 ft	Sample Bottom	188 ft
Washed Top	130 ft	Washed Bottom	188 ft
Duplicate Storage			
Comments			

<https://www.iihr.uiowa.edu/igs/geosam/well/10988/general-information>