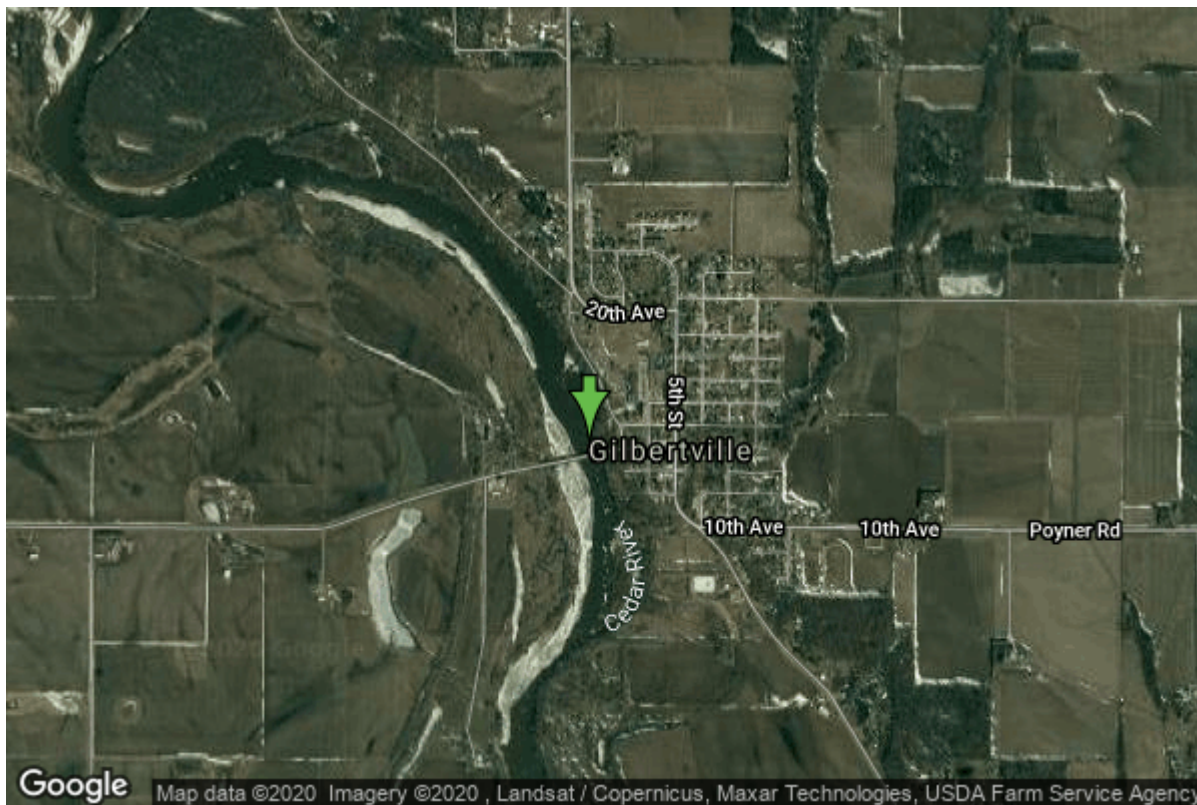


# Well W#11169 Information



<b>Date Received</b>		<b>State</b>	Iowa
<b>Owner Name</b>	Gilbertville, City Of	<b>County</b>	Black Hawk
<b>Alt Name</b>	#2	<b>Quadrangle</b>	Gilbertville, Iowa
<b>WNumber</b>	11169	<b>Township</b>	T88N
<b>PWTS ID</b>	0	<b>Range</b>	R12W
<b>PWS ID</b>	733084	<b>Section</b>	23
<b>Storet ID</b>	0	<b>Quarter</b>	SW SW NW
<b>SDWIS ID</b>	2408724	<b>Latitude</b>	42.4163300000
<b>USGS ID</b>	0	<b>Longitude</b>	-92.2176100000
<b>Project</b>	Source Water Protection	<b>Accuracy</b>	
<b>Operator</b>	Unknown	<b>UTM X</b>	564372
		<b>UTM Y</b>	4696299

<b>Site Type</b>	Drilled hole	<b>Drilling Company</b>	Layne Western - Ia.
<b>Well Status</b>	Active	<b>Drilling Date</b>	05/21/1959
<b>Field Located</b>	No	<b>Drilling Method</b>	Cable
<b>Elevation</b>	834 ft	<b>Bedrock Depth</b>	0 ft
<b>Elevation Accuracy</b>	Digital Elevation Model Accurate to 5 ft	<b>Well Depth</b>	275 ft
<b>Landscape Position</b>	Valley	<b>Total Depth</b>	275 ft
		<b>Well Types</b>	Municipal, Public Supply
		<b>Aquifers</b>	Silurian/Devonian

## Casing Construction Information

<b>Date</b>	05/21/1959	<b>Casing Type</b>	Steel
<b>Start Depth</b>	0.00 ft	<b>End Depth</b>	61.00 ft

**Diameter** 10.00 in **Amount** 63.00 ft  
**Comments**

## Log Information

**Date** 03/11/1960  
**Log Types** Strip log  
**Prepared By** Unknown  
**Comments**

---

**Date**  
**Log Types** Drillers log  
**Prepared By** Gilbertville, City Of  
**Comments**

## Stratigraphy Information

**System** Quaternary  
**Series** Pleistocene Series  
**Group** Wisconsinan Episode  
**Formation** Peoria  
**Member**  
**Submember**  
**Start Depth** 0.00 ft **End Depth** 5.00 ft  
**Contact Accuracy**  
**Penetration**  
**Primary Lithology** Loess **Percent** 100  
**Secondary Lithology** **Percent**  
**Tertiary Lithology** **Percent**  
**Comments**

---

**System** Quaternary  
**Series** Pleistocene Series  
**Group** Pre-Illinoian  
**Formation**  
**Member**  
**Submember**  
**Start Depth** 5.00 ft **End Depth** 10.00 ft  
**Contact Accuracy**  
**Penetration**  
**Primary Lithology** Till **Percent** 100  
**Secondary Lithology** **Percent**  
**Tertiary Lithology** **Percent**  
**Comments**

---

**System** Devonian  
**Series**

<b>Group</b>	Cedar Valley		
<b>Formation</b>	Little Cedar		
<b>Member</b>	Eagle Center		
<b>Submember</b>			
<b>Start Depth</b>	10.00 ft	<b>End Depth</b>	55.00 ft
<b>Contact Accuracy</b>			
<b>Penetration</b>			
<b>Primary Lithology</b>	Dolomite	<b>Percent</b>	100
<b>Secondary Lithology</b>		<b>Percent</b>	
<b>Tertiary Lithology</b>		<b>Percent</b>	
<b>Comments</b>			
<hr/>			
<b>System</b>	Devonian		
<b>Series</b>			
<b>Group</b>	Cedar Valley		
<b>Formation</b>	Little Cedar		
<b>Member</b>	Bassett		
<b>Submember</b>			
<b>Start Depth</b>	55.00 ft	<b>End Depth</b>	132.00 ft
<b>Contact Accuracy</b>			
<b>Penetration</b>			
<b>Primary Lithology</b>	Limestone	<b>Percent</b>	100
<b>Secondary Lithology</b>		<b>Percent</b>	
<b>Tertiary Lithology</b>		<b>Percent</b>	
<b>Comments</b>			
<hr/>			
<b>System</b>	Devonian		
<b>Series</b>			
<b>Group</b>	Wapsipinicon		
<b>Formation</b>	Pinicon Ridge		
<b>Member</b>			
<b>Submember</b>			
<b>Start Depth</b>	132.00 ft	<b>End Depth</b>	190.00 ft
<b>Contact Accuracy</b>			
<b>Penetration</b>			
<b>Primary Lithology</b>	Dolomite	<b>Percent</b>	0
<b>Secondary Lithology</b>	Limestone	<b>Percent</b>	0
<b>Tertiary Lithology</b>		<b>Percent</b>	
<b>Comments</b>			
<hr/>			
<b>System</b>	Silurian		
<b>Series</b>			
<b>Group</b>			
<b>Formation</b>	Laporte City		
<b>Member</b>			
<b>Submember</b>			
<b>Start Depth</b>	190.00 ft	<b>End Depth</b>	205.00 ft
<b>Contact Accuracy</b>			
<b>Penetration</b>			

<b>Primary Lithology</b>	Limestone	<b>Percent</b>	100
<b>Secondary Lithology</b>		<b>Percent</b>	
<b>Tertiary Lithology</b>		<b>Percent</b>	
<b>Comments</b>			

---

<b>System</b>	Silurian		
<b>Series</b>			
<b>Group</b>			
<b>Formation</b>	Hopkinton		
<b>Member</b>			
<b>Submember</b>			
<b>Start Depth</b>	205.00 ft	<b>End Depth</b>	275.00 ft
<b>Contact Accuracy</b>			
<b>Penetration</b>			
<b>Primary Lithology</b>	Dolomite	<b>Percent</b>	100
<b>Secondary Lithology</b>		<b>Percent</b>	
<b>Tertiary Lithology</b>		<b>Percent</b>	
<b>Comments</b>			

## Water Production Information

<b>Date</b>	05/21/1959	<b>Start Time</b>	
<b>Aquifer</b>	Unknown		
<b>Static Water Level</b>	32.00 ft	<b>Yield</b>	200 gallons per minute
<b>Pumping Water Level</b>	32 ft	<b>Yield Method</b>	Unknown
<b>Measurement</b>	Unknown	<b>Pump Test</b>	No
<b>Pump Method</b>	Unknown	<b>Duration</b>	0 mins
<b>Comments</b>			

## Chip Storage Information

<b>Date</b>	08/06/1959		
<b>Storage</b>	SA3-1	<b>Bin</b>	
<b>Number of Boxes</b>	1	<b>Number of Samples</b>	55
<b>Sample Intervals</b>	5	<b>Sample Gaps</b>	
<b>Sample Top</b>	0 ft	<b>Sample Bottom</b>	275 ft
<b>Washed Top</b>	20 ft	<b>Washed Bottom</b>	275 ft
<b>Duplicate Storage</b>			
<b>Comments</b>			

<https://www.iuhr.uiowa.edu/igs/geosam/well/11169/general-information>