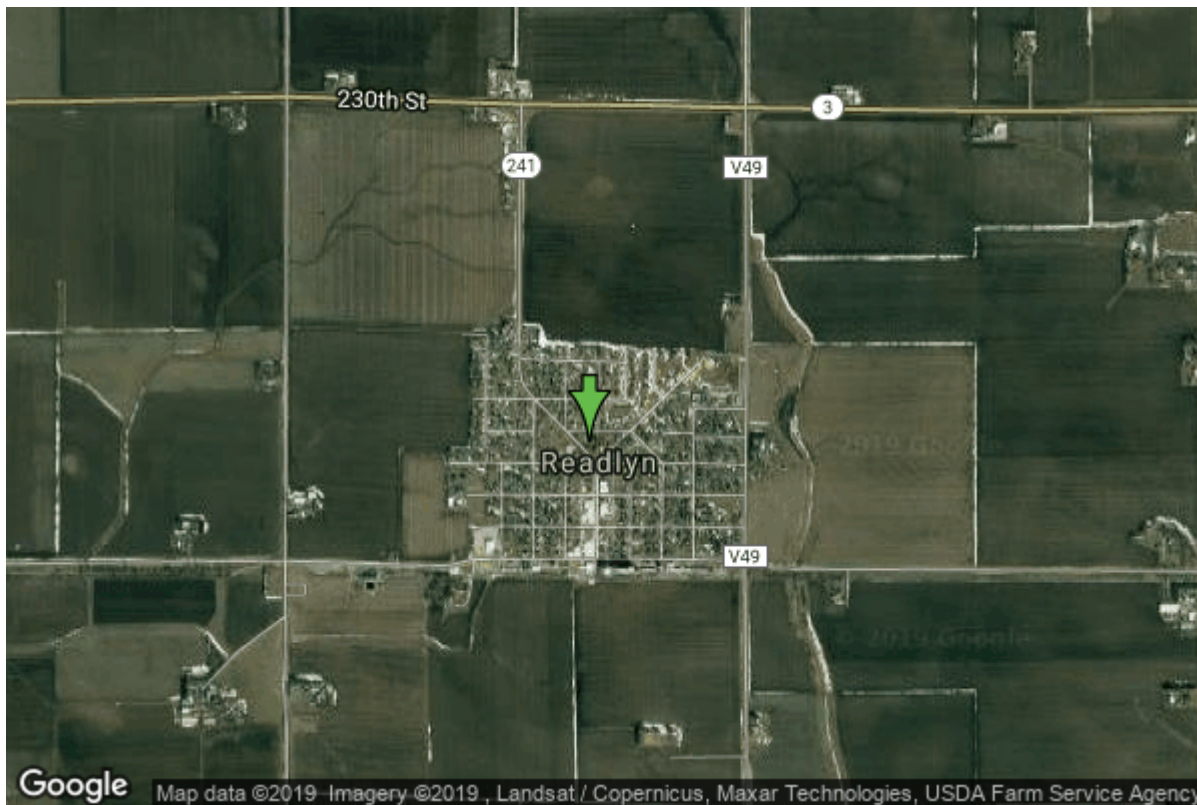


# Well W#11991 Information



<b>Date Received</b>		<b>State</b>	Iowa
<b>Owner Name</b>	Readlyn, City Of	<b>County</b>	Bremer
<b>Alt Name</b>	#2	<b>Quadrangle</b>	Readlyn, Iowa
<b>WNumber</b>	11991	<b>Township</b>	T91N
<b>PWTS ID</b>	0	<b>Range</b>	R12W
<b>PWS ID</b>	965073	<b>Section</b>	11
<b>Storet ID</b>	0	<b>Quarter</b>	SE NW SE
<b>SDWIS ID</b>	2408950	<b>Latitude</b>	42.7043200000
<b>USGS ID</b>	424224092133901	<b>Longitude</b>	-92.2250100000
<b>Project</b>	Source Water Protection	<b>Accuracy</b>	
<b>Operator</b>	Unknown	<b>UTM X</b>	563470
		<b>UTM Y</b>	4728272

<b>Site Type</b>	Drilled hole	<b>Drilling Company</b>	Hoeg & Ames (H.M. White)
<b>Well Status</b>	Active	<b>Drilling Date</b>	03/24/1960
<b>Field Located</b>	No	<b>Drilling Method</b>	Unknown
<b>Elevation</b>	1038 ft	<b>Bedrock Depth</b>	0 ft
<b>Elevation Accuracy</b>	Digital Elevation Model Accurate to 5 ft	<b>Well Depth</b>	154 ft
<b>Landscape Position</b>	Unknown	<b>Total Depth</b>	154 ft
		<b>Well Types</b>	Municipal, Public Supply
		<b>Aquifers</b>	Silurian

# Hole Construction Information

Date	03/24/1960		
Diameter	16.00 in	Depth	25.00 ft
Comments			

---

Date	03/24/1960		
Diameter	12.00 in	Depth	99.00 ft
Comments			

---

Date	03/24/1960		
Diameter	0.00 in	Depth	154.00 ft
Comments			

# Casing Construction Information

Date	03/24/1960	Casing Type	Unknown
Start Depth	0.00 ft	End Depth	25.00 ft
Diameter	16.00 in	Amount	25.00 ft
Comments			

---

Date	03/24/1960	Casing Type	Unknown
Start Depth	0.00 ft	End Depth	99.00 ft
Diameter	10.00 in	Amount	99.00 ft
Comments			

# Grout Construction Information

Date	03/24/1960		
Grout Type	Cement	Grout Placement	Unknown
Start Depth	0.00 ft	End Depth	99.00 ft
Comments			

# Pump Construction Information

Date	03/24/1960	Pump Type	Submersible
Diameter	0.00 in	Rating	0
Depth Intake	84.00 ft		
Comments			

# Log Information

Date	
Log Types	Unknown

Prepared By Unknown  
Comments

---

Date  
Log Types Strip log  
Prepared By Unknown  
Comments

## Stratigraphy Information

System Quaternary  
Series Pleistocene Series  
Group Pre-Illinoian  
Formation  
Member  
Submember  
Start Depth 0.00 ft      End Depth 75.00 ft  
Contact Accuracy  
Penetration  
Primary Lithology Till      Percent 100  
Secondary Lithology      Percent  
Tertiary Lithology      Percent  
Comments

---

System Silurian  
Series  
Group  
Formation  
Member  
Submember  
Start Depth 75.00 ft      End Depth 152.00 ft  
Contact Accuracy  
Penetration  
Primary Lithology Dolomite      Percent 0  
Secondary Lithology Chert/Chalcedony      Percent 0  
Tertiary Lithology      Percent  
Comments

---

System Ordovician  
Series  
Group  
Formation Maquoketa  
Member Neda  
Submember  
Start Depth 152.00 ft      End Depth 154.00 ft  
Contact Accuracy  
Penetration  
Primary Lithology Chert/Chalcedony      Percent 0

<b>Secondary Lithology</b>	Shale	<b>Percent</b>	0
<b>Tertiary Lithology</b>		<b>Percent</b>	
<b>Comments</b>			

## Water Production Information

<b>Date</b>	03/24/1960	<b>Start Time</b>	
<b>Aquifer</b>	Unknown		
<b>Static Water Level</b>	41.00 ft	<b>Yield</b>	180 gallons per minute
<b>Pumping Water Level</b>	45 ft	<b>Yield Method</b>	Unknown
<b>Measurement</b>	Unknown	<b>Pump Test</b>	No
<b>Pump Method</b>	Unknown	<b>Duration</b>	0 mins
<b>Comments</b>			

## Chip Storage Information

<b>Date</b>	04/08/1960		
<b>Storage</b>	TL1-64	<b>Bin</b>	
<b>Number of Boxes</b>	1	<b>Number of Samples</b>	26
<b>Sample Intervals</b>	5	<b>Sample Gaps</b>	125-145
<b>Sample Top</b>	0 ft	<b>Sample Bottom</b>	154 ft
<b>Washed Top</b>	75 ft	<b>Washed Bottom</b>	154 ft
<b>Duplicate Storage</b>			
<b>Comments</b>			

<https://www.iuhr.uiowa.edu/igs/geosam/well/11991/general-information>