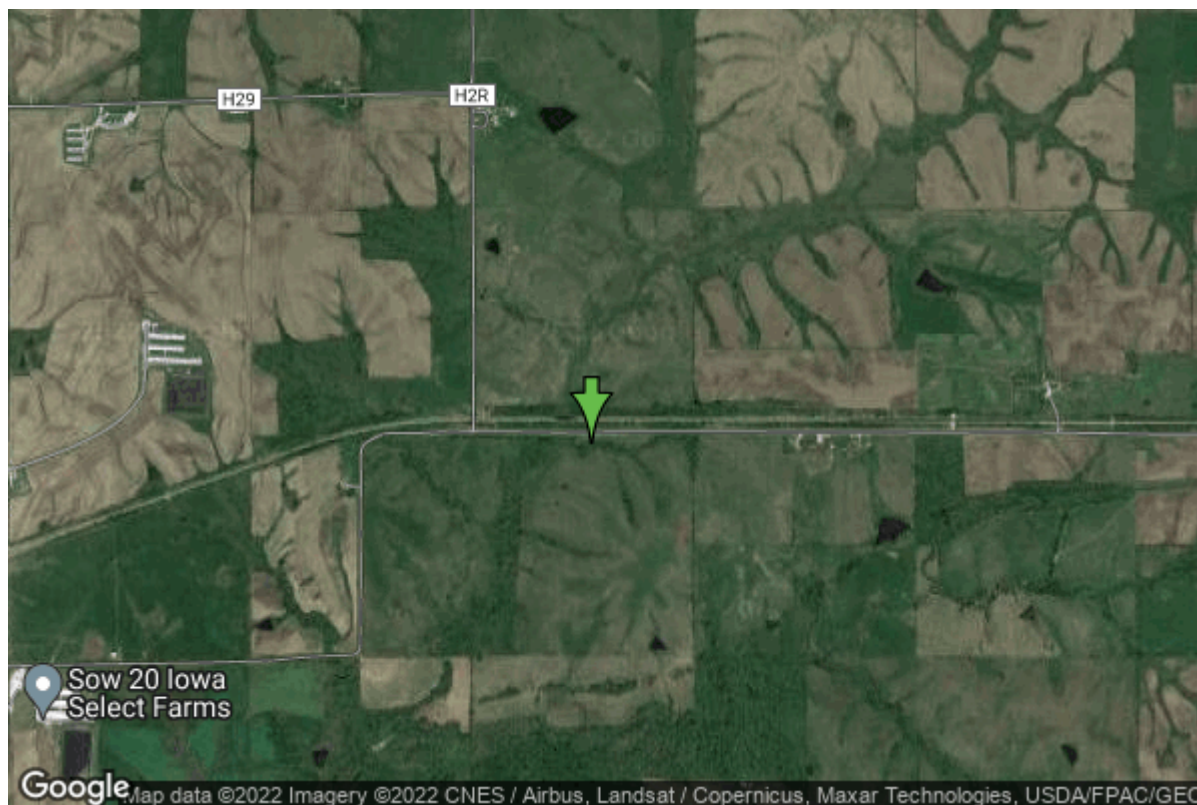


# Well W#12271 Information



<b>Date Received</b>		<b>State</b>	Iowa
<b>Owner Name</b>	Murray, City Of	<b>County</b>	Clarke
<b>Alt Name</b>		<b>Quadrangle</b>	Murray, Iowa
<b>WNumber</b>	12271	<b>Township</b>	T72N
<b>PWTS ID</b>	0	<b>Range</b>	R27W
<b>PWS ID</b>	2032023	<b>Section</b>	17
<b>Storet ID</b>	0	<b>Quarter</b>	NW NE NW
<b>SDWIS ID</b>	0	<b>Latitude</b>	41.0411140000
<b>USGS ID</b>	0	<b>Longitude</b>	-93.9886530000
<b>Project</b>	Source Water Protection	<b>Accuracy</b>	
<b>Operator</b>	Unknown	<b>UTM X</b>	416904
		<b>UTM Y</b>	4543792

<b>Site Type</b>	Drilled hole	<b>Drilling Company</b>	Unknown
<b>Well Status</b>	Not Used	<b>Drilling Date</b>	01/01/1960
<b>Field Located</b>	No	<b>Drilling Method</b>	Unknown
<b>Elevation</b>	1113 ft	<b>Bedrock Depth</b>	0 ft
<b>Elevation Accuracy</b>	Digital Elevation Model Accurate to 5 ft	<b>Well Depth</b>	29 ft
<b>Landscape Position</b>	Unknown	<b>Total Depth</b>	29 ft
		<b>Well Types</b>	Municipal
		<b>Aquifers</b>	Pleistocene

## Log Information

<b>Date</b>	
<b>Log Types</b>	Strip log

Prepared By                      Unknown  
Comments

## Stratigraphy Information

<b>System</b>	Quaternary		
<b>Series</b>			
<b>Group</b>			
<b>Formation</b>			
<b>Member</b>			
<b>Submember</b>			
<b>Start Depth</b>	0.00 ft	<b>End Depth</b>	2.00 ft
<b>Contact Accuracy</b>			
<b>Penetration</b>			
<b>Primary Lithology</b>	Soil Or Fill	<b>Percent</b>	100
<b>Secondary Lithology</b>	Unknown	<b>Percent</b>	0
<b>Tertiary Lithology</b>	Unknown	<b>Percent</b>	0
<b>Comments</b>			

---

<b>System</b>	Quaternary		
<b>Series</b>	Pleistocene Series		
<b>Group</b>	Wisconsinan Episode		
<b>Formation</b>	Peoria		
<b>Member</b>			
<b>Submember</b>			
<b>Start Depth</b>	2.00 ft	<b>End Depth</b>	10.00 ft
<b>Contact Accuracy</b>			
<b>Penetration</b>			
<b>Primary Lithology</b>	Loess	<b>Percent</b>	100
<b>Secondary Lithology</b>	Unknown	<b>Percent</b>	0
<b>Tertiary Lithology</b>	Unknown	<b>Percent</b>	0
<b>Comments</b>			

---

<b>System</b>	Quaternary		
<b>Series</b>	Pleistocene Series		
<b>Group</b>	Pre-Illinoian		
<b>Formation</b>			
<b>Member</b>			
<b>Submember</b>			
<b>Start Depth</b>	10.00 ft	<b>End Depth</b>	18.00 ft
<b>Contact Accuracy</b>			
<b>Penetration</b>			
<b>Primary Lithology</b>	Till - Oxidized And Leached	<b>Percent</b>	50
<b>Secondary Lithology</b>	Till - Oxidized And Unleached	<b>Percent</b>	50
<b>Tertiary Lithology</b>	Unknown	<b>Percent</b>	0
<b>Comments</b>			

---

<b>System</b>	Quaternary		
<b>Series</b>	Pleistocene Series		
<b>Group</b>	Pre-Illinoian		
<b>Formation</b>			
<b>Member</b>			
<b>Submember</b>			
<b>Start Depth</b>	18.00 ft	<b>End Depth</b>	25.00 ft
<b>Contact Accuracy</b>			
<b>Penetration</b>			
<b>Primary Lithology</b>	Till - Oxidized And Unleached	<b>Percent</b>	100
<b>Secondary Lithology</b>		<b>Percent</b>	
<b>Tertiary Lithology</b>		<b>Percent</b>	
<b>Comments</b>			

---

<b>System</b>	Quaternary		
<b>Series</b>	Pleistocene Series		
<b>Group</b>			
<b>Formation</b>			
<b>Member</b>			
<b>Submember</b>			
<b>Start Depth</b>	25.00 ft	<b>End Depth</b>	28.00 ft
<b>Contact Accuracy</b>			
<b>Penetration</b>			
<b>Primary Lithology</b>	Sand And Gravel	<b>Percent</b>	100
<b>Secondary Lithology</b>		<b>Percent</b>	
<b>Tertiary Lithology</b>		<b>Percent</b>	
<b>Comments</b>			

---

<b>System</b>	Quaternary		
<b>Series</b>	Pleistocene Series		
<b>Group</b>	Pre-Illinoian		
<b>Formation</b>			
<b>Member</b>			
<b>Submember</b>			
<b>Start Depth</b>	28.00 ft	<b>End Depth</b>	29.00 ft
<b>Contact Accuracy</b>			
<b>Penetration</b>			
<b>Primary Lithology</b>	Till - Oxidized And Unleached	<b>Percent</b>	100
<b>Secondary Lithology</b>		<b>Percent</b>	
<b>Tertiary Lithology</b>		<b>Percent</b>	
<b>Comments</b>			

# Chip Storage Information

<b>Date</b>	08/07/1960		
<b>Storage</b>	TL2-39	<b>Bin</b>	
<b>Number of Boxes</b>	1	<b>Number of Samples</b>	7
<b>Sample Intervals</b>	5	<b>Sample Gaps</b>	
<b>Sample Top</b>	0 ft	<b>Sample Bottom</b>	29 ft
<b>Washed Top</b>	0 ft	<b>Washed Bottom</b>	0 ft
<b>Duplicate Storage</b>			
<b>Comments</b>			

<https://www.iihr.uiowa.edu/igs/geosam/well/12271/general-information>