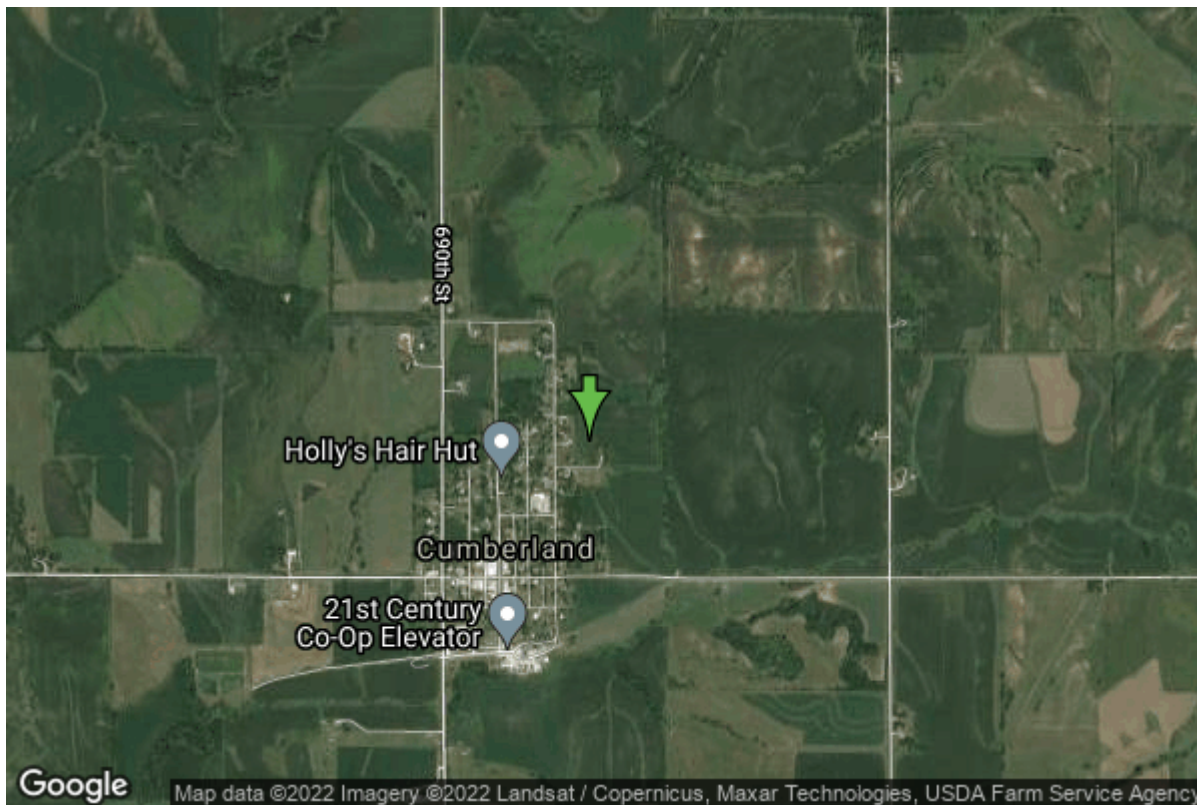


Well W#12967 Information



Date Received		State	Iowa
Owner Name	Cumberland, City Of	County	Cass
Alt Name	WEST	Quadrangle	Massena, Iowa
WNumber	12967	Township	T75N
PWTS ID	0	Range	R35W
PWS ID	1516093	Section	22
Storet ID	0	Quarter	SW NE SW
SDWIS ID	2410532	Latitude	41.2775460000
USGS ID	0	Longitude	-94.8659260000
Project	Source Water Protection	Accuracy	
Operator	Unknown	UTM X	343729
		UTM Y	4571247

Site Type	Drilled hole	Drilling Company	Sunberg, John
Well Status	Not Used	Drilling Date	04/01/1961
Field Located	No	Drilling Method	Unknown
Elevation	1306 ft	Bedrock Depth	192 ft
Elevation Accuracy	Digital Elevation Model Accurate to 5 ft	Well Depth	219 ft
Landscape Position	Upland	Total Depth	219 ft
		Well Types	Municipal, Public Supply
		Aquifers	Dakota/Cretaceous

Casing Construction Information

Date	06/01/1961	Casing Type	Unknown
Start Depth	0.00 ft	End Depth	196.00 ft

Diameter 8.00 in **Amount** 0.00 ft
Comments

Log Information

Date 07/26/1961
Log Types Strip log
Prepared By Unknown
Comments

Date
Log Types Drillers log
Prepared By Cumberland, City Of
Comments

Stratigraphy Information

System Quaternary
Series Pleistocene Series
Group Wisconsinan Episode
Formation Peoria
Member
Submember
Start Depth 0.00 ft **End Depth** 20.00 ft
Contact Accuracy
Penetration
Primary Lithology Loess **Percent** 100
Secondary Lithology **Percent**
Tertiary Lithology **Percent**
Comments

System Quaternary
Series Pleistocene Series
Group Pre-Illinoian
Formation
Member
Submember
Start Depth 20.00 ft **End Depth** 50.00 ft
Contact Accuracy
Penetration
Primary Lithology Till - Oxidized And Unleached **Percent** 100
Secondary Lithology **Percent**
Tertiary Lithology **Percent**
Comments

System Quaternary

Series	Pleistocene Series		
Group	Pre-Illinoian		
Formation			
Member			
Submember			
Start Depth	50.00 ft	End Depth	55.00 ft
Contact Accuracy			
Penetration			
Primary Lithology	Till - Oxidized And Leached	Percent	100
Secondary Lithology		Percent	
Tertiary Lithology		Percent	
Comments			

System	Quaternary		
Series	Pleistocene Series		
Group	Pre-Illinoian		
Formation			
Member			
Submember			
Start Depth	55.00 ft	End Depth	130.00 ft
Contact Accuracy			
Penetration			
Primary Lithology	Till - Oxidized And Unleached	Percent	100
Secondary Lithology		Percent	
Tertiary Lithology		Percent	
Comments			

System	Quaternary		
Series	Pleistocene Series		
Group	Pre-Illinoian		
Formation			
Member			
Submember			
Start Depth	130.00 ft	End Depth	135.00 ft
Contact Accuracy			
Penetration			
Primary Lithology	Till - Oxidized And Unleached	Percent	50
Secondary Lithology	Till - Unoxidized And Unleached	Percent	50
Tertiary Lithology		Percent	
Comments			

System	Quaternary		
Series	Pleistocene Series		
Group	Pre-Illinoian		
Formation			

Member			
Submember			
Start Depth	135.00 ft	End Depth	165.00 ft
Contact Accuracy Penetration			
Primary Lithology	Till - Oxidized And Unleached	Percent	100
Secondary Lithology		Percent	
Tertiary Lithology		Percent	
Comments			

System	Quaternary		
Series	Pleistocene Series		
Group	Pre-Illinoian		
Formation			
Member			
Submember			
Start Depth	165.00 ft	End Depth	184.00 ft
Contact Accuracy Penetration			
Primary Lithology	Till - Oxidized And Unleached	Percent	60
Secondary Lithology	Till - Unoxidized And Unleached	Percent	40
Tertiary Lithology		Percent	
Comments			

System	Quaternary		
Series	Pleistocene Series		
Group	Pre-Illinoian		
Formation			
Member			
Submember			
Start Depth	184.00 ft	End Depth	192.00 ft
Contact Accuracy Penetration			
Primary Lithology	Till - Unoxidized And Unleached	Percent	100
Secondary Lithology		Percent	
Tertiary Lithology		Percent	
Comments			

System	Cretaceous		
Series			
Group	Fort Benton ("Lower Colorado ")		
Formation	Dakota		
Member			
Submember			
Start Depth	192.00 ft	End Depth	219.00 ft

Contact Accuracy			
Penetration			
Primary Lithology	Sandstone	Percent	100
Secondary Lithology		Percent	
Tertiary Lithology		Percent	
Comments			

Water Production Information

Date	06/01/1961	Start Time	
Aquifer	Unknown		
Static Water Level	159.00 ft	Yield	50 gallons per minute
Pumping Water Level	0 ft	Yield Method	Unknown
Measurement	Unknown	Pump Test	No
Pump Method	Unknown	Duration	0 mins
Comments			

Chip Storage Information

Date	07/24/1961		
Storage	TL4-157	Bin	
Number of Boxes	1	Number of Samples	36
Sample Intervals	5	Sample Gaps	192-219
Sample Top	0 ft	Sample Bottom	219 ft
Washed Top	0 ft	Washed Bottom	0 ft
Duplicate Storage			
Comments			

<https://www.iihr.uiowa.edu/igs/geosam/well/12967/general-information>