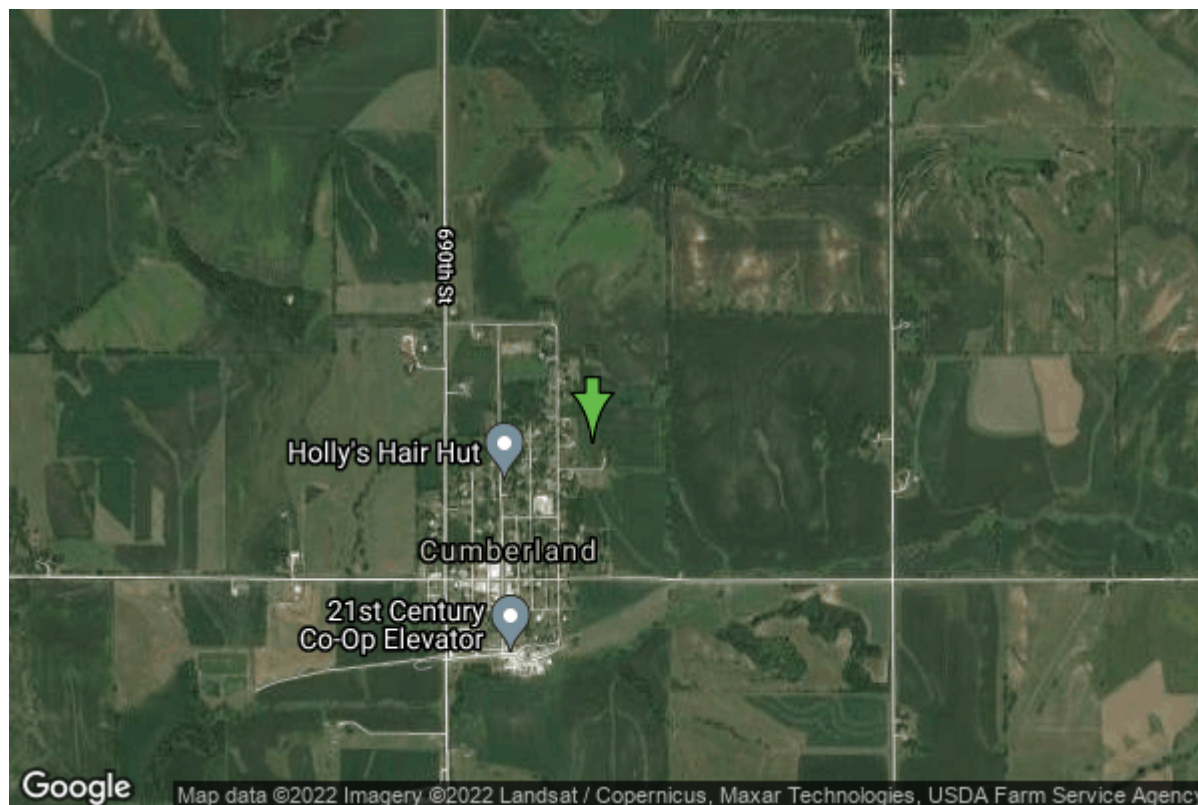


Well W#12969 Information



Date Received		State	Iowa
Owner Name	Cumberland, City Of	County	Cass
Alt Name	EAST	Quadrangle	Massena, Iowa
WNumber	12969	Township	T75N
PWTS ID	0	Range	R35W
PWS ID	1516093	Section	22
Storet ID	0	Quarter	SW NE SW
SDWIS ID	2411822	Latitude	41.2775190000
USGS ID	0	Longitude	-94.8659260000
Project	Source Water Protection	Accuracy	
Operator	Unknown	UTM X	343729
		UTM Y	4571244

Site Type	Drilled hole	Drilling Company	Sunberg, John
Well Status	Not Used	Drilling Date	04/01/1961
Field Located	No	Drilling Method	Unknown
Elevation	1306 ft	Bedrock Depth	205 ft
Elevation Accuracy	Digital Elevation Model Accurate to 5 ft	Well Depth	257 ft
Landscape Position	Upland	Total Depth	257 ft
		Well Types	Municipal, Public Supply
		Aquifers	Dakota/Cretaceous

Casing Construction Information

Date	01/01/1961	Casing Type	Unknown
Start Depth	0.00 ft	End Depth	257.00 ft

Diameter	7.00 in	Amount	0.00 ft
Comments			
Date	01/01/1961	Casing Type	Unknown
Start Depth	240.00 ft	End Depth	257.00 ft
Diameter	7.00 in	Amount	17.00 ft
Comments			
Date	01/01/1961	Casing Type	Perforated
Start Depth	235.00 ft	End Depth	240.00 ft
Diameter	7.00 in	Amount	5.00 ft
Comments			

Log Information

Date	07/26/1961
Log Types	Strip log
Prepared By	Unknown
Comments	
Date	
Log Types	Drillers log
Prepared By	Cumberland, City Of
Comments	

Stratigraphy Information

System	Quaternary		
Series	Pleistocene Series		
Group	Wisconsinan Episode		
Formation	Peoria		
Member			
Submember			
Start Depth	0.00 ft	End Depth	10.00 ft
Contact Accuracy			
Penetration			
Primary Lithology	Loess	Percent	100
Secondary Lithology	Unknown	Percent	0
Tertiary Lithology	Unknown	Percent	0
Comments			
System	Quaternary		
Series	Pleistocene Series		
Group	Pre-Illinoian		
Formation			
Member			
Submember			

Start Depth	10.00 ft	End Depth	15.00 ft
Contact Accuracy Penetration			
Primary Lithology	Till - Oxidized And Leached	Percent	100
Secondary Lithology		Percent	
Tertiary Lithology		Percent	
Comments			

System	Quaternary		
Series			
Group			
Formation			
Member			
Submember			
Start Depth	15.00 ft	End Depth	20.00 ft
Contact Accuracy Penetration			
Primary Lithology	Unknown	Percent	0
Secondary Lithology	Unknown	Percent	0
Tertiary Lithology	Unknown	Percent	0
Comments			

System	Quaternary		
Series	Pleistocene Series		
Group	Pre-Illinoian		
Formation			
Member			
Submember			
Start Depth	20.00 ft	End Depth	45.00 ft
Contact Accuracy Penetration			
Primary Lithology	Till - Oxidized And Unleached	Percent	100
Secondary Lithology		Percent	
Tertiary Lithology		Percent	
Comments			

System	Quaternary		
Series	Pleistocene Series		
Group	Pre-Illinoian		
Formation			
Member			
Submember			
Start Depth	45.00 ft	End Depth	55.00 ft
Contact Accuracy Penetration			
Primary Lithology	Till - Oxidized And Leached	Percent	100

Secondary Lithology		Percent	
Tertiary Lithology		Percent	
Comments			
System	Quaternary		
Series	Pleistocene Series		
Group	Pre-Illinoian		
Formation			
Member			
Submember			
Start Depth	55.00 ft	End Depth	165.00 ft
Contact Accuracy			
Penetration			
Primary Lithology	Till - Oxidized And Unleached	Percent	100
Secondary Lithology		Percent	
Tertiary Lithology		Percent	
Comments			
System	Quaternary		
Series	Pleistocene Series		
Group	Pre-Illinoian		
Formation			
Member			
Submember			
Start Depth	165.00 ft	End Depth	170.00 ft
Contact Accuracy			
Penetration			
Primary Lithology	Till - Oxidized And Unleached	Percent	80
Secondary Lithology	Till - Unoxidized And Unleached	Percent	20
Tertiary Lithology		Percent	
Comments			
System	Quaternary		
Series	Pleistocene Series		
Group	Pre-Illinoian		
Formation			
Member			
Submember			
Start Depth	170.00 ft	End Depth	205.00 ft
Contact Accuracy			
Penetration			
Primary Lithology	Till - Unoxidized And Unleached	Percent	100
Secondary Lithology		Percent	
Tertiary Lithology		Percent	
Comments			

System	Cretaceous		
Series			
Group	Fort Benton ("Lower Colorado ")		
Formation	Dakota		
Member	Nishnabotna		
Submember			
Start Depth	205.00 ft	End Depth	255.00 ft
Contact Accuracy			
Penetration			
Primary Lithology	Sandstone	Percent	0
Secondary Lithology	Sand And Gravel	Percent	0
Tertiary Lithology	Shale	Percent	0
Comments			

System	Cretaceous		
Series			
Group	Fort Benton ("Lower Colorado ")		
Formation	Dakota		
Member			
Submember			
Start Depth	255.00 ft	End Depth	257.00 ft
Contact Accuracy			
Penetration			
Primary Lithology	Unknown	Percent	0
Secondary Lithology	Unknown	Percent	0
Tertiary Lithology	Unknown	Percent	0
Comments			

Water Production Information

Date	01/01/1961	Start Time	
Aquifer	Unknown		
Static Water Level	138.00 ft	Yield	22 gallons per minute
Pumping Water Level	0 ft	Yield Method	Unknown
Measurement	Unknown	Pump Test	No
Pump Method	Unknown	Duration	0 mins
Comments			

Chip Storage Information

Date	07/24/1961		
Storage	TL4-158	Bin	
Number of Boxes	1	Number of Samples	51
Sample Intervals	5	Sample Gaps	255-257
Sample Top	0 ft	Sample Bottom	255 ft
Washed Top	0 ft	Washed Bottom	0 ft

**Duplicate Storage
Comments**

<https://www.ihr.uiowa.edu/igs/geosam/well/12969/general-information>