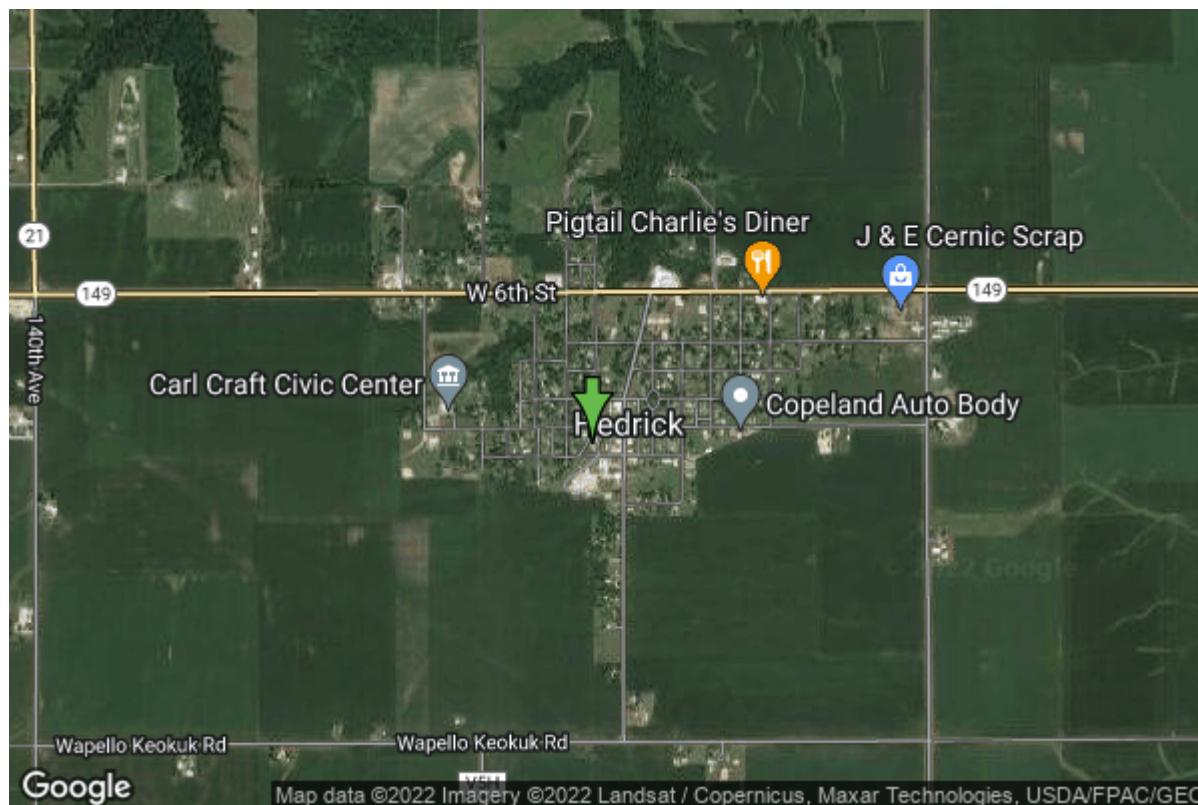


Well W#1307 Information



Date Received		State	Iowa
Owner Name	Hedrick, City Of	County	Keokuk
Alt Name	OLD DRILLED WELL	Quadrangle	Hedrick, Iowa
WNumber	1307	Township	T74N
PWTS ID	0	Range	R13W
PWS ID	5432042	Section	36
Storet ID	0	Quarter	NW SE NW
SDWIS ID	0	Latitude	41.1718460000
USGS ID	0	Longitude	-92.3096450000
Project	Source Water Protection	Accuracy	
Operator	Unknown	UTM X	557909
		UTM Y	4558064

Site Type	Drilled hole	Drilling Company	Unknown
Well Status	Not Used	Drilling Date	02/01/1941
Field Located	No	Drilling Method	Unknown
Elevation	822 ft	Bedrock Depth	0 ft
Elevation Accuracy	Digital Elevation Model Accurate to 5 ft	Well Depth	530 ft
Landscape Position	Unknown	Total Depth	530 ft
		Well Types	Municipal
		Aquifers	Mississippian

Log Information

Date	11/17/1946
Log Types	Strip log

Prepared By Harris Jr., Stanley E.
Comments Insoluble residue study

Date 10/28/1945
Log Types Strip log
Prepared By Harris Jr., Stanley E.
Comments

Date 10/24/1940
Log Types Strip log
Prepared By Elias, M.M.
Comments

Date
Log Types Unknown
Prepared By Unknown
Comments

Stratigraphy Information

System Quaternary
Series Pleistocene Series
Group Pre-Illinoian
Formation
Member
Submember
Start Depth 0.00 ft **End Depth** 45.00 ft
Contact Accuracy
Penetration
Primary Lithology Gumbotil **Percent** 0
Secondary Lithology Sand **Percent** 0
Tertiary Lithology Unknown **Percent** 0
Comments

System Quaternary
Series Pleistocene Series
Group
Formation
Member
Submember
Start Depth 45.00 ft **End Depth** 70.00 ft
Contact Accuracy
Penetration
Primary Lithology Sand And Gravel **Percent** 0
Secondary Lithology **Percent**
Tertiary Lithology **Percent**
Comments

System	Pennsylvanian (Subsystem Of Carboniferous System)		
Series			
Group	Cherokee		
Formation			
Member			
Submember			
Start Depth	70.00 ft	End Depth	144.00 ft
Contact Accuracy			
Penetration			
Primary Lithology	Shale	Percent	0
Secondary Lithology	Sandstone	Percent	0
Tertiary Lithology	Siltstone	Percent	0
Comments			

System	Mississippian (Subsystem Of Carboniferous System)		
Series			
Group			
Formation	St. Louis		
Member			
Submember			
Start Depth	144.00 ft	End Depth	225.00 ft
Contact Accuracy			
Penetration			
Primary Lithology	Limestone	Percent	0
Secondary Lithology	Sandstone	Percent	0
Tertiary Lithology	Dolomite	Percent	0
Comments			

System	Mississippian (Subsystem Of Carboniferous System)		
Series			
Group			
Formation	Spergen		
Member			
Submember			
Start Depth	225.00 ft	End Depth	235.00 ft
Contact Accuracy			
Penetration			
Primary Lithology	Dolomite	Percent	0
Secondary Lithology	Sandstone	Percent	0
Tertiary Lithology		Percent	
Comments			

System	Mississippian (Subsystem Of Carboniferous System)		
Series			
Group	Augusta		
Formation	Warsaw		
Member			
Submember			

Start Depth	235.00 ft	End Depth	270.00 ft
Contact Accuracy			
Penetration			
Primary Lithology	Shale	Percent	0
Secondary Lithology	Dolomite	Percent	0
Tertiary Lithology	Chert/Chalcedony	Percent	0
Comments			

System	Mississippian (Subsystem Of Carboniferous System)		
Series			
Group	Augusta		
Formation	Keokuk		
Member			
Submember			
Start Depth	270.00 ft	End Depth	315.00 ft
Contact Accuracy			
Penetration			
Primary Lithology	Limestone	Percent	0
Secondary Lithology	Chert/Chalcedony	Percent	0
Tertiary Lithology	Dolomite	Percent	0
Comments			

System	Mississippian (Subsystem Of Carboniferous System)		
Series			
Group	Augusta		
Formation	Burlington		
Member			
Submember			
Start Depth	315.00 ft	End Depth	395.00 ft
Contact Accuracy			
Penetration			
Primary Lithology	Ls/Dol Mixed	Percent	0
Secondary Lithology	Chert/Chalcedony	Percent	0
Tertiary Lithology	Shale	Percent	0
Comments			

System	Unknown		
Series			
Group			
Formation			
Member			
Submember			
Start Depth	395.00 ft	End Depth	480.00 ft
Contact Accuracy			
Penetration			
Primary Lithology	Limestone	Percent	0
Secondary Lithology	Dolomite	Percent	0
Tertiary Lithology	Chert/Chalcedony	Percent	0
Comments			

System	Mississippian (Subsystem Of Carboniferous System)		
Series			
Group	North Hill		
Formation	Mccraney		
Member			
Submember			
Start Depth	480.00 ft	End Depth	525.00 ft
Contact Accuracy			
Penetration			
Primary Lithology	Limestone	Percent	0
Secondary Lithology	Dolomite	Percent	0
Tertiary Lithology		Percent	
Comments			

System	Devonian		
Series			
Group	Yellow Spring (New Albany)		
Formation	Maple Mill		
Member			
Submember			
Start Depth	525.00 ft	End Depth	530.00 ft
Contact Accuracy			
Penetration			
Primary Lithology	Shale	Percent	100
Secondary Lithology		Percent	
Tertiary Lithology		Percent	
Comments			

Chip Storage Information

Date			
Storage	WH8-6	Bin	
Number of Boxes	1	Number of Samples	89
Sample Intervals	0	Sample Gaps	0-2
Sample Top	2 ft	Sample Bottom	530 ft
Washed Top	0 ft	Washed Bottom	0 ft
Duplicate Storage	IR-B9		
Comments			

<https://www.iuhr.uiowa.edu/igs/geosam/well/1307/general-information>