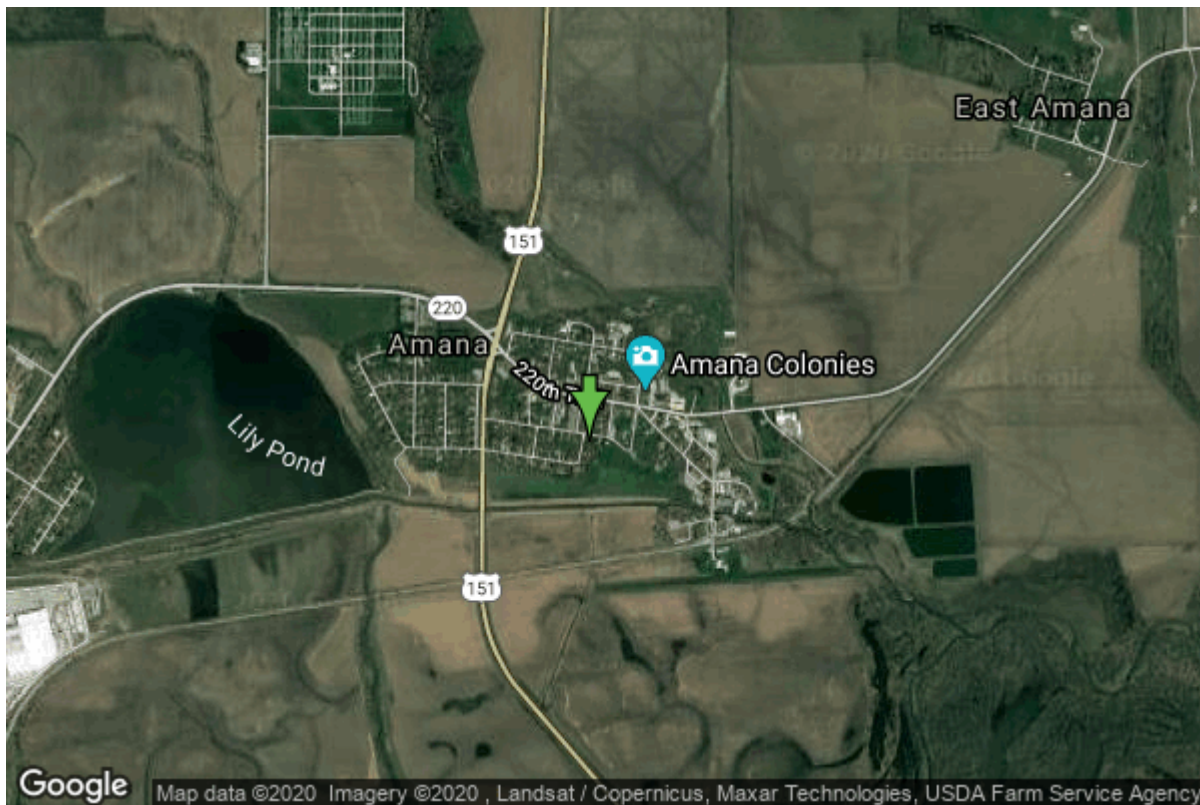


Well W#13780 Information



Date Received		State	Iowa
Owner Name	Amana, City Of	County	Iowa
Alt Name	#6	Quadrangle	Amana, Iowa
WNumber	13780	Township	T81N
PWTS ID	0	Range	R9W
PWS ID	4848901	Section	26
Storet ID	0	Quarter	NW SW NW
SDWIS ID	2582589	Latitude	41.7985030000
USGS ID	0	Longitude	-91.8697500000
Project	Source Water Protection	Accuracy	
Operator	Unknown	UTM X	593900
		UTM Y	4628022

Site Type	Drilled hole	Drilling Company	Layne Western - Ia.
Well Status	Active	Drilling Date	07/01/1962
Field Located	No	Drilling Method	Cable
Elevation	736 ft	Bedrock Depth	50 ft
Elevation Accuracy	Digital Elevation Model Accurate to 5 ft	Well Depth	601 ft
Landscape Position	Valley	Total Depth	601 ft
		Well Types	Municipal, Public Supply
		Aquifers	Silurian/Devonian

Casing Construction Information

Date	07/01/1962	Casing Type	Steel
Start Depth	0.00 ft	End Depth	0.00 ft

Diameter	10.00 in	Amount	346.40 ft
Comments			

Date	07/01/1962	Casing Type	Steel
Start Depth	385.00 ft	End Depth	440.00 ft
Diameter	8.00 in	Amount	55.00 ft
Comments			

Grout Construction Information

Date	07/01/1962	Grout Placement	Unknown
Grout Type	Unknown	End Depth	440.00 ft
Start Depth	0.00 ft		
Comments			

Log Information

Date	01/23/1963
Log Types	Strip log
Prepared By	Unknown
Comments	

Date	
Log Types	Drillers log
Prepared By	Unknown
Comments	

Stratigraphy Information

System	Quaternary		
Series			
Group			
Formation			
Member			
Submember			
Start Depth	0.00 ft	End Depth	5.00 ft
Contact Accuracy			
Penetration			
Primary Lithology	Soil Or Fill	Percent	100
Secondary Lithology		Percent	
Tertiary Lithology		Percent	
Comments			

System	Quaternary
Series	
Group	

Formation Member Submember			
Start Depth	5.00 ft	End Depth	15.00 ft
Contact Accuracy Penetration			
Primary Lithology	Loess	Percent	100
Secondary Lithology		Percent	
Tertiary Lithology		Percent	
Comments			
<hr/>			
System	Quaternary		
Series	Pleistocene Series		
Group			
Formation Member Submember			
Start Depth	15.00 ft	End Depth	51.00 ft
Contact Accuracy Penetration			
Primary Lithology	Till	Percent	0
Secondary Lithology	Silt	Percent	0
Tertiary Lithology	Sand	Percent	0
Comments			
<hr/>			
System	Devonian		
Series			
Group	Yellow Spring (New Albany)		
Formation Member Submember	Maple Mill		
Start Depth	51.00 ft	End Depth	65.00 ft
Contact Accuracy Penetration			
Primary Lithology	Shale	Percent	100
Secondary Lithology		Percent	
Tertiary Lithology		Percent	
Comments			
<hr/>			
System	Devonian		
Series			
Group	Yellow Spring (New Albany)		
Formation Member Submember	Sheffield		
Start Depth	65.00 ft	End Depth	220.00 ft
Contact Accuracy Penetration			
Primary Lithology	Shale	Percent	100

Secondary Lithology		Percent	
Tertiary Lithology		Percent	
Comments			

System	Devonian		
Series			
Group	Yellow Spring (New Albany)		
Formation	Lime Creek		
Member			
Submember			
Start Depth	220.00 ft	End Depth	350.00 ft
Contact Accuracy			
Penetration			
Primary Lithology	Shale	Percent	0
Secondary Lithology	Limestone	Percent	0
Tertiary Lithology	Dolomite	Percent	0
Comments			

System	Devonian		
Series			
Group	Cedar Valley		
Formation	Little Cedar		
Member	Rapid		
Submember			
Start Depth	350.00 ft	End Depth	370.00 ft
Contact Accuracy			
Penetration			
Primary Lithology	Limestone	Percent	0
Secondary Lithology	Dolomite	Percent	0
Tertiary Lithology	Chert/Chalcedony	Percent	0
Comments			

System	Devonian		
Series			
Group	Cedar Valley		
Formation	Little Cedar		
Member	Solon		
Submember			
Start Depth	370.00 ft	End Depth	425.00 ft
Contact Accuracy			
Penetration			
Primary Lithology	Limestone	Percent	100
Secondary Lithology		Percent	
Tertiary Lithology		Percent	
Comments			

System	Devonian		
Series			
Group	Wapsipinicon		

Formation Member Submember	Pinicon Ridge Davenport		
Start Depth	425.00 ft	End Depth	443.00 ft
Contact Accuracy Penetration			
Primary Lithology	Limestone	Percent	0
Secondary Lithology	Dolomite	Percent	0
Tertiary Lithology		Percent	
Comments			
<hr/>			
System Series	Devonian		
Group Formation Member Submember	Wapsipinicon Pinicon Ridge Spring Grove		
Start Depth	443.00 ft	End Depth	458.00 ft
Contact Accuracy Penetration			
Primary Lithology	Dolomite	Percent	100
Secondary Lithology		Percent	
Tertiary Lithology		Percent	
Comments			
<hr/>			
System Series	Devonian		
Group Formation Member Submember	Wapsipinicon Pinicon Ridge Kenwood		
Start Depth	458.00 ft	End Depth	462.00 ft
Contact Accuracy Penetration			
Primary Lithology	Dolomite	Percent	0
Secondary Lithology	Chert/Chalcedony	Percent	0
Tertiary Lithology		Percent	
Comments			
<hr/>			
System Series	Silurian		
Group Formation Member Submember			
Start Depth	462.00 ft	End Depth	595.00 ft
Contact Accuracy Penetration			
Primary Lithology	Dolomite	Percent	100

Secondary Lithology		Percent	
Tertiary Lithology		Percent	
Comments			
<hr/>			
System	Ordovician		
Series			
Group			
Formation	Maquoketa		
Member			
Submember			
Start Depth	595.00 ft	End Depth	601.00 ft
Contact Accuracy			
Penetration			
Primary Lithology	Shale	Percent	100
Secondary Lithology		Percent	
Tertiary Lithology		Percent	
Comments			

Water Production Information

Date	07/01/1962	Start Time	
Aquifer	Unknown		
Static Water Level	63.00 ft	Yield	123 gallons per minute
Pumping Water Level	170 ft	Yield Method	Unknown
Measurement	Unknown	Pump Test	No
Pump Method	Unknown	Duration	0 mins
Comments			

Chip Storage Information

Date	08/30/1962		
Storage	TL4-474,475	Bin	
Number of Boxes	2	Number of Samples	120
Sample Intervals	5	Sample Gaps	195-200,260-265
Sample Top	0 ft	Sample Bottom	601 ft
Washed Top	85 ft	Washed Bottom	600 ft
Duplicate Storage			
Comments			

<https://www.iuhr.uiowa.edu/igs/geosam/well/13780/general-information>