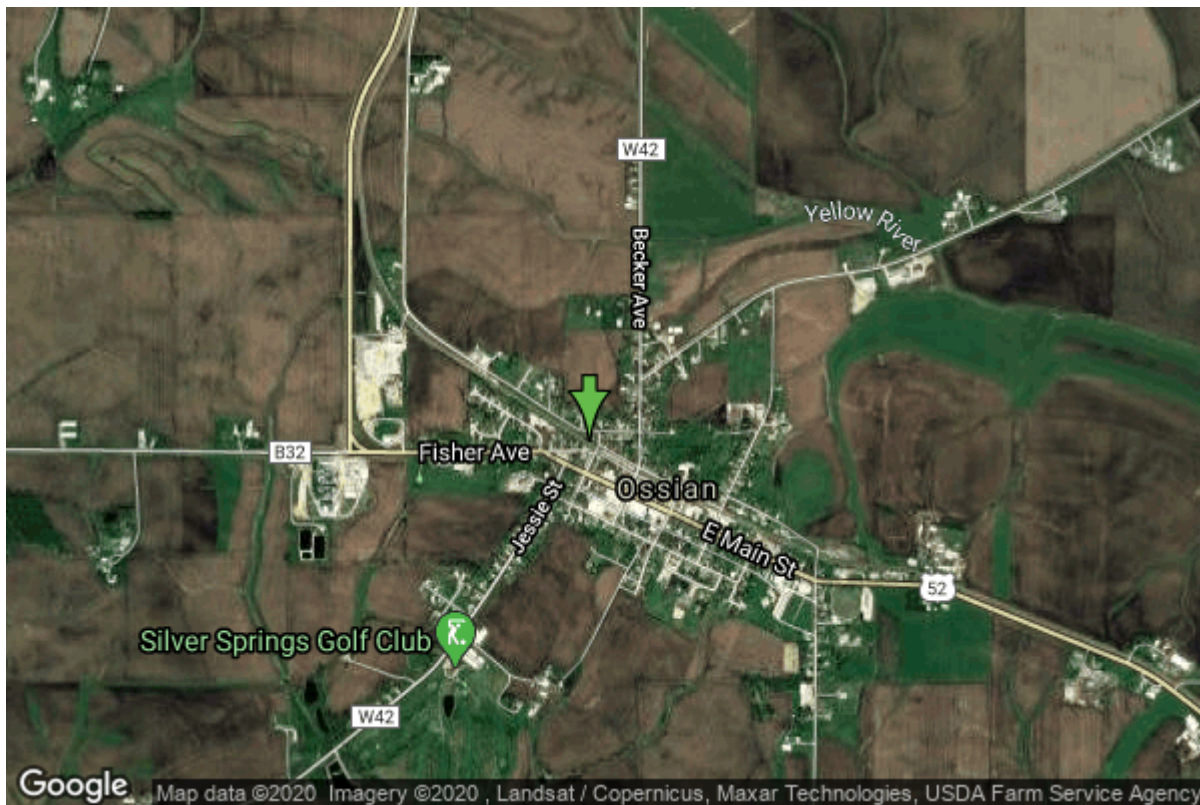


Well W#13842 Information



| | | | |
|-------------------------|------------------------------------|-------------------|----------------|
| Date Received | | State | Iowa |
| Owner Name | Ossian, City Of | County | Winneshiek |
| Alt Name | #2 | Quadrangle | Calmar, Iowa |
| WNumber | 13842 | Township | T96N |
| PWTS ID | 0 | Range | R8W |
| PWS ID | 9677007 | Section | 10 |
| Storet ID | 31960005 | Quarter | NE SE SE |
| SDWIS ID | 2413010 | Latitude | 43.1472580000 |
| USGS ID | 430842091460302 | Longitude | -91.7657950000 |
| Project Operator | Source Water Protection Unknown | Accuracy | |
| | | UTM X | 600358 |
| | | UTM Y | 4777907 |

| | | | |
|---------------------------|---|-------------------------|------------------------------------|
| Site Type | Drilled hole | Drilling Company | Thorpe Well Co. |
| Well Status | Active | Drilling Date | 09/10/1962 |
| Field Located | No | Drilling Method | Unknown |
| Elevation | 1266 ft | Bedrock Depth | 0 ft |
| Elevation Accuracy | Digital Elevation Model Accurate to 5 ft | Well Depth | 1017 ft |
| Landscape Position | Unknown | Total Depth | 1017 ft |
| | | Well Types | Municipal, Public Supply |
| | | Aquifers | Cambrian-Ordovician, Ordovician |

Casing Construction Information

| | | | |
|--------------------|------------|--------------------|-----------|
| Date | 09/10/1962 | Casing Type | Steel |
| Start Depth | -1.50 ft | End Depth | 240.00 ft |
| Diameter | 12.00 in | Amount | 241.50 ft |
| Comments | | | |

| | | | |
|--------------------|------------|--------------------|-----------|
| Date | 09/10/1962 | Casing Type | Steel |
| Start Depth | 440.00 ft | End Depth | 590.00 ft |
| Diameter | 10.00 in | Amount | 150.00 ft |
| Comments | | | |

| | | | |
|--------------------|------------|--------------------|-----------|
| Date | 09/10/1962 | Casing Type | Steel |
| Start Depth | 424.00 ft | End Depth | 754.00 ft |
| Diameter | 8.00 in | Amount | 330.00 ft |
| Comments | | | |

| | | | |
|--------------------|------------|--------------------|-----------|
| Date | 09/10/1962 | Casing Type | Steel |
| Start Depth | 690.00 ft | End Depth | 732.00 ft |
| Diameter | 4.00 in | Amount | 42.00 ft |
| Comments | | | |

| | | | |
|--------------------|------------|--------------------|-----------|
| Date | 09/10/1962 | Casing Type | Steel |
| Start Depth | 736.00 ft | End Depth | 925.00 ft |
| Diameter | 4.00 in | Amount | 189.00 ft |
| Comments | | | |

Log Information

| | |
|--------------------|------------|
| Date | 02/01/1966 |
| Log Types | Pump Test |
| Prepared By | |
| Comments | |

| | |
|--------------------|------------|
| Date | 01/16/1963 |
| Log Types | Strip log |
| Prepared By | Unknown |
| Comments | |

| | |
|--------------------|-----------------|
| Date | |
| Log Types | Drillers log |
| Prepared By | Ossian, City Of |
| Comments | |

Stratigraphy Information

| | | | |
|----------------------------|---------------------|------------------|----------|
| System | Quaternary | | |
| Series | Pleistocene Series | | |
| Group | Wisconsinan Episode | | |
| Formation | Peoria | | |
| Member | | | |
| Submember | | | |
| Start Depth | 0.00 ft | End Depth | 15.00 ft |
| Contact Accuracy | | | |
| Penetration | | | |
| Primary Lithology | Loess | Percent | 100 |
| Secondary Lithology | | Percent | |
| Tertiary Lithology | | Percent | |
| Comments | | | |

| | | | |
|----------------------------|--------------------|------------------|----------|
| System | Quaternary | | |
| Series | Pleistocene Series | | |
| Group | Pre-Illinoian | | |
| Formation | | | |
| Member | | | |
| Submember | | | |
| Start Depth | 15.00 ft | End Depth | 55.00 ft |
| Contact Accuracy | | | |
| Penetration | | | |
| Primary Lithology | Till | Percent | 100 |
| Secondary Lithology | | Percent | |
| Tertiary Lithology | | Percent | |
| Comments | | | |

| | | | |
|----------------------------|--------------------|------------------|----------|
| System | Quaternary | | |
| Series | Pleistocene Series | | |
| Group | Pre-Illinoian | | |
| Formation | | | |
| Member | | | |
| Submember | | | |
| Start Depth | 55.00 ft | End Depth | 68.00 ft |
| Contact Accuracy | | | |
| Penetration | | | |
| Primary Lithology | Sand And Gravel | Percent | 100 |
| Secondary Lithology | | Percent | |
| Tertiary Lithology | | Percent | |
| Comments | | | |

| | | | |
|------------------|------------|--|--|
| System | Ordovician | | |
| Series | | | |
| Group | | | |
| Formation | Maquoketa | | |

| | | | |
|----------------------------|-----------|------------------|-----------|
| Member | | | |
| Submember | | | |
| Start Depth | 68.00 ft | End Depth | 220.00 ft |
| Contact Accuracy | | | |
| Penetration | | | |
| Primary Lithology | Limestone | Percent | 0 |
| Secondary Lithology | Dolomite | Percent | 0 |
| Tertiary Lithology | Shale | Percent | 0 |
| Comments | | | |

| | | | |
|----------------------------|------------|------------------|-----------|
| System | Ordovician | | |
| Series | | | |
| Group | Galena | | |
| Formation | Dubuque | | |
| Member | | | |
| Submember | | | |
| Start Depth | 220.00 ft | End Depth | 260.00 ft |
| Contact Accuracy | | | |
| Penetration | | | |
| Primary Lithology | Limestone | Percent | 100 |
| Secondary Lithology | | Percent | |
| Tertiary Lithology | | Percent | |
| Comments | | | |

| | | | |
|----------------------------|------------|------------------|-----------|
| System | Ordovician | | |
| Series | | | |
| Group | Galena | | |
| Formation | Wise Lake | | |
| Member | | | |
| Submember | | | |
| Start Depth | 260.00 ft | End Depth | 320.00 ft |
| Contact Accuracy | | | |
| Penetration | | | |
| Primary Lithology | Limestone | Percent | 0 |
| Secondary Lithology | Dolomite | Percent | 0 |
| Tertiary Lithology | | Percent | |
| Comments | | | |

| | | | |
|----------------------------|------------|------------------|-----------|
| System | Ordovician | | |
| Series | | | |
| Group | Galena | | |
| Formation | Dunleith | | |
| Member | | | |
| Submember | | | |
| Start Depth | 320.00 ft | End Depth | 440.00 ft |
| Contact Accuracy | | | |
| Penetration | | | |
| Primary Lithology | Limestone | Percent | 0 |
| Secondary Lithology | Dolomite | Percent | 0 |

| | | | |
|----------------------------|------------------|------------------|-----------|
| Tertiary Lithology | Chert/Chalcedony | Percent | 0 |
| Comments | | | |
| System | Ordovician | | |
| Series | | | |
| Group | Galena | | |
| Formation | Decorah | | |
| Member | Ion | | |
| Submember | | | |
| Start Depth | 440.00 ft | End Depth | 465.00 ft |
| Contact Accuracy | | | |
| Penetration | | | |
| Primary Lithology | Limestone | Percent | 0 |
| Secondary Lithology | Shale | Percent | 0 |
| Tertiary Lithology | | Percent | |
| Comments | | | |
| System | Ordovician | | |
| Series | | | |
| Group | Galena | | |
| Formation | Decorah | | |
| Member | Guttenberg | | |
| Submember | | | |
| Start Depth | 465.00 ft | End Depth | 476.00 ft |
| Contact Accuracy | | | |
| Penetration | | | |
| Primary Lithology | Limestone | Percent | 100 |
| Secondary Lithology | | Percent | |
| Tertiary Lithology | | Percent | |
| Comments | | | |
| System | Ordovician | | |
| Series | | | |
| Group | Galena | | |
| Formation | Decorah | | |
| Member | Spechts Ferry | | |
| Submember | | | |
| Start Depth | 476.00 ft | End Depth | 495.00 ft |
| Contact Accuracy | | | |
| Penetration | | | |
| Primary Lithology | Limestone | Percent | 0 |
| Secondary Lithology | Shale | Percent | 0 |
| Tertiary Lithology | | Percent | |
| Comments | | | |
| System | Ordovician | | |
| Series | | | |
| Group | Galena | | |
| Formation | Platteville | | |

| | | | |
|----------------------------|-----------|------------------|-----------|
| Member | | | |
| Submember | | | |
| Start Depth | 495.00 ft | End Depth | 524.00 ft |
| Contact Accuracy | | | |
| Penetration | | | |
| Primary Lithology | Limestone | Percent | 0 |
| Secondary Lithology | Dolomite | Percent | 0 |
| Tertiary Lithology | | Percent | |
| Comments | | | |

| | | | |
|----------------------------|------------|------------------|-----------|
| System | Ordovician | | |
| Series | | | |
| Group | Ancell | | |
| Formation | Glenwood | | |
| Member | | | |
| Submember | | | |
| Start Depth | 524.00 ft | End Depth | 529.00 ft |
| Contact Accuracy | | | |
| Penetration | | | |
| Primary Lithology | Shale | Percent | 100 |
| Secondary Lithology | | Percent | |
| Tertiary Lithology | | Percent | |
| Comments | | | |

| | | | |
|----------------------------|---------------------|------------------|-----------|
| System | Ordovician | | |
| Series | | | |
| Group | Ancell | | |
| Formation | St. Peter Sandstone | | |
| Member | | | |
| Submember | | | |
| Start Depth | 529.00 ft | End Depth | 585.00 ft |
| Contact Accuracy | | | |
| Penetration | | | |
| Primary Lithology | Sandstone | Percent | 100 |
| Secondary Lithology | | Percent | |
| Tertiary Lithology | | Percent | |
| Comments | | | |

| | | | |
|----------------------------|------------------|------------------|-----------|
| System | Ordovician | | |
| Series | | | |
| Group | Prairie Du Chien | | |
| Formation | Shakopee | | |
| Member | | | |
| Submember | | | |
| Start Depth | 585.00 ft | End Depth | 710.00 ft |
| Contact Accuracy | | | |
| Penetration | | | |
| Primary Lithology | Dolomite | Percent | 0 |
| Secondary Lithology | Sandstone | Percent | 0 |

| Tertiary Lithology | | Percent | |
|----------------------------|------------------|------------------|------------|
| Comments | | | |
| System | Ordovician | | |
| Series | | | |
| Group | Prairie Du Chien | | |
| Formation | Oneota | | |
| Member | | | |
| Submember | | | |
| Start Depth | 710.00 ft | End Depth | 900.00 ft |
| Contact Accuracy | | | |
| Penetration | | | |
| Primary Lithology | Dolomite | Percent | 0 |
| Secondary Lithology | Chert/Chalcedony | Percent | 0 |
| Tertiary Lithology | | Percent | |
| Comments | | | |
| System | Cambrian | | |
| Series | | | |
| Group | | | |
| Formation | Jordan | | |
| Member | | | |
| Submember | | | |
| Start Depth | 900.00 ft | End Depth | 1016.00 ft |
| Contact Accuracy | | | |
| Penetration | | | |
| Primary Lithology | Sandstone | Percent | 0 |
| Secondary Lithology | Dolomite | Percent | 0 |
| Tertiary Lithology | | Percent | |
| Comments | | | |
| System | Cambrian | | |
| Series | | | |
| Group | | | |
| Formation | St. Lawrence | | |
| Member | | | |
| Submember | | | |
| Start Depth | 1016.00 ft | End Depth | 1017.00 ft |
| Contact Accuracy | | | |
| Penetration | | | |
| Primary Lithology | Dolomite | Percent | 100 |
| Secondary Lithology | | Percent | |
| Tertiary Lithology | | Percent | |
| Comments | | | |

Water Production Information

| | | | |
|----------------------------|---|---------------------|----------------------|
| Date | 08/25/2014 | Start Time | |
| Aquifer | | | |
| Static Water Level | 431.00 ft | Yield | 0 gallons per minute |
| Pumping Water Level | 442 ft | Yield Method | Unknown |
| Measurement | Airline | Pump Test | No |
| Pump Method | Unknown | Duration | 0 mins |
| Comments | Water levels taken from DNR Jordan questionnaire. | | |

| | | | |
|----------------------------|------------|---------------------|------------------------|
| Date | 09/10/1962 | Start Time | |
| Aquifer | Unknown | | |
| Static Water Level | 398.00 ft | Yield | 210 gallons per minute |
| Pumping Water Level | 418 ft | Yield Method | Unknown |
| Measurement | Unknown | Pump Test | Yes |
| Pump Method | Unknown | Duration | 0 mins |
| Comments | | | |

Chip Storage Information

| | | | |
|--------------------------|--------------|--------------------------|---------|
| Date | 09/21/1962 | | |
| Storage | TL4-531->533 | Bin | |
| Number of Boxes | 3 | Number of Samples | 177 |
| Sample Intervals | 5 | Sample Gaps | MANY |
| Sample Top | 0 ft | Sample Bottom | 1017 ft |
| Washed Top | 100 ft | Washed Bottom | 1017 ft |
| Duplicate Storage | | | |
| Comments | | | |

<https://www.iuhr.uiowa.edu/igs/geosam/well/13842/general-information>