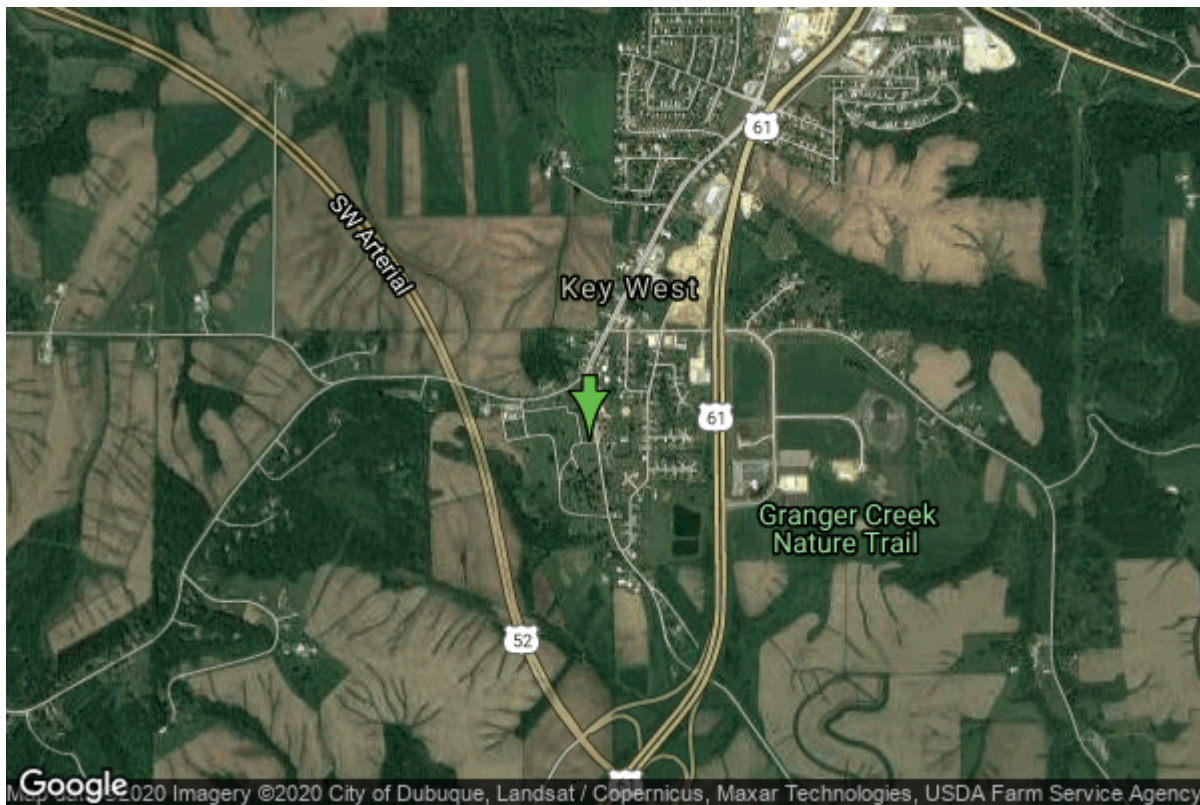


Well W#14431 Information



Date Received		State	Iowa
Owner Name	St. Joseph Church - Key West	County	Dubuque
Alt Name	ST. JOSEPH'S SCHOOL & PARISH	Quadrangle	Dubuque South, Iowa-III.
WNumber	14431	Township	T88N
PWTS ID	0	Range	R2E
PWS ID	3126594	Section	11
Storet ID	0	Quarter	SE NE SE
SDWIS ID	2407826	Latitude	42.4440300000
USGS ID	0	Longitude	-90.6849600000
Project Operator	Source Water Protection Unknown	Accuracy	
		UTM X	690392
		UTM Y	4701675
Site Type	Drilled hole	Drilling Company	Hoeg & Ames (H.M. White)
Well Status	Active	Drilling Date	04/18/1963
Field Located	No	Drilling Method	Cable
Elevation	833 ft	Bedrock Depth	0 ft
Elevation Accuracy	Digital Elevation Model Accurate to 5 ft	Well Depth	500 ft
Landscape Position	Upland	Total Depth	500 ft
		Well Types	Public Supply
		Aquifers	Ordovician

Hole Construction Information

Date	04/18/1963		
Diameter	10.00 in	Depth	115.00 ft
Comments			

Date	04/18/1963		
Diameter	6.00 in	Depth	500.00 ft
Comments			

Log Information

Date	11/07/1967
Log Types	Strip log
Prepared By	Unknown
Comments	

Date	
Log Types	Drillers log
Prepared By	St. Joseph Church - Key West
Comments	

Stratigraphy Information

System	Ordovician		
Series			
Group	Galena		
Formation	Dubuque		
Member			
Submember			
Start Depth	100.00 ft	End Depth	145.00 ft
Contact Accuracy			
Penetration			
Primary Lithology	Dolomite	Percent	100
Secondary Lithology		Percent	
Tertiary Lithology		Percent	
Comments			

System	Ordovician		
Series			
Group	Galena		
Formation	Wise Lake		
Member			
Submember			
Start Depth	145.00 ft	End Depth	210.00 ft
Contact Accuracy			

Penetration			
Primary Lithology	Dolomite	Percent	100
Secondary Lithology		Percent	
Tertiary Lithology		Percent	
Comments			

System	Ordovician		
Series			
Group	Galena		
Formation	Dunleith		
Member			
Submember			
Start Depth	210.00 ft	End Depth	333.00 ft
Contact Accuracy			
Penetration			
Primary Lithology	Dolomite	Percent	0
Secondary Lithology	Chert/Chalcedony	Percent	0
Tertiary Lithology		Percent	
Comments			

System	Ordovician		
Series			
Group	Galena		
Formation	Decorah		
Member			
Submember			
Start Depth	333.00 ft	End Depth	365.00 ft
Contact Accuracy			
Penetration			
Primary Lithology	Limestone	Percent	0
Secondary Lithology	Shale	Percent	0
Tertiary Lithology		Percent	
Comments			

System	Ordovician		
Series			
Group	Galena		
Formation	Platteville		
Member			
Submember			
Start Depth	365.00 ft	End Depth	415.00 ft
Contact Accuracy			
Penetration			
Primary Lithology	Dolomite	Percent	0
Secondary Lithology	Limestone	Percent	0
Tertiary Lithology		Percent	
Comments			

System	Ordovician		
---------------	------------	--	--

Series			
Group	Ancell		
Formation	Glenwood		
Member			
Submember			
Start Depth	415.00 ft	End Depth	416.00 ft
Contact Accuracy			
Penetration			
Primary Lithology	Shale	Percent	100
Secondary Lithology		Percent	
Tertiary Lithology		Percent	
Comments			

System	Ordovician		
Series			
Group	Ancell		
Formation	St. Peter Sandstone		
Member			
Submember			
Start Depth	416.00 ft	End Depth	475.00 ft
Contact Accuracy			
Penetration			
Primary Lithology	Sandstone	Percent	100
Secondary Lithology		Percent	
Tertiary Lithology		Percent	
Comments			

System	Ordovician		
Series			
Group	Prairie Du Chien		
Formation	Shakopee		
Member			
Submember			
Start Depth	475.00 ft	End Depth	500.00 ft
Contact Accuracy			
Penetration			
Primary Lithology	Dolomite	Percent	0
Secondary Lithology	Chert/Chalcedony	Percent	0
Tertiary Lithology	Sandstone	Percent	0
Comments			

Water Production Information

Date	04/18/1963	Start Time	
Aquifer	Unknown		
Static Water Level	137.00 ft	Yield	50 gallons per minute
Pumping Water Level	156 ft	Yield Method	Unknown
Measurement	Unknown	Pump Test	Yes

Pump Method	Unknown	Duration	0 mins
Comments			

Chip Storage Information

Date	06/04/1963		
Storage	TL4-782	Bin	
Number of Boxes	1	Number of Samples	78
Sample Intervals	5	Sample Gaps	0-100,490-500
Sample Top	100 ft	Sample Bottom	490 ft
Washed Top	100 ft	Washed Bottom	490 ft
Duplicate Storage			
Comments			

<https://www.ihr.uiowa.edu/igs/geosam/well/14431/general-information>