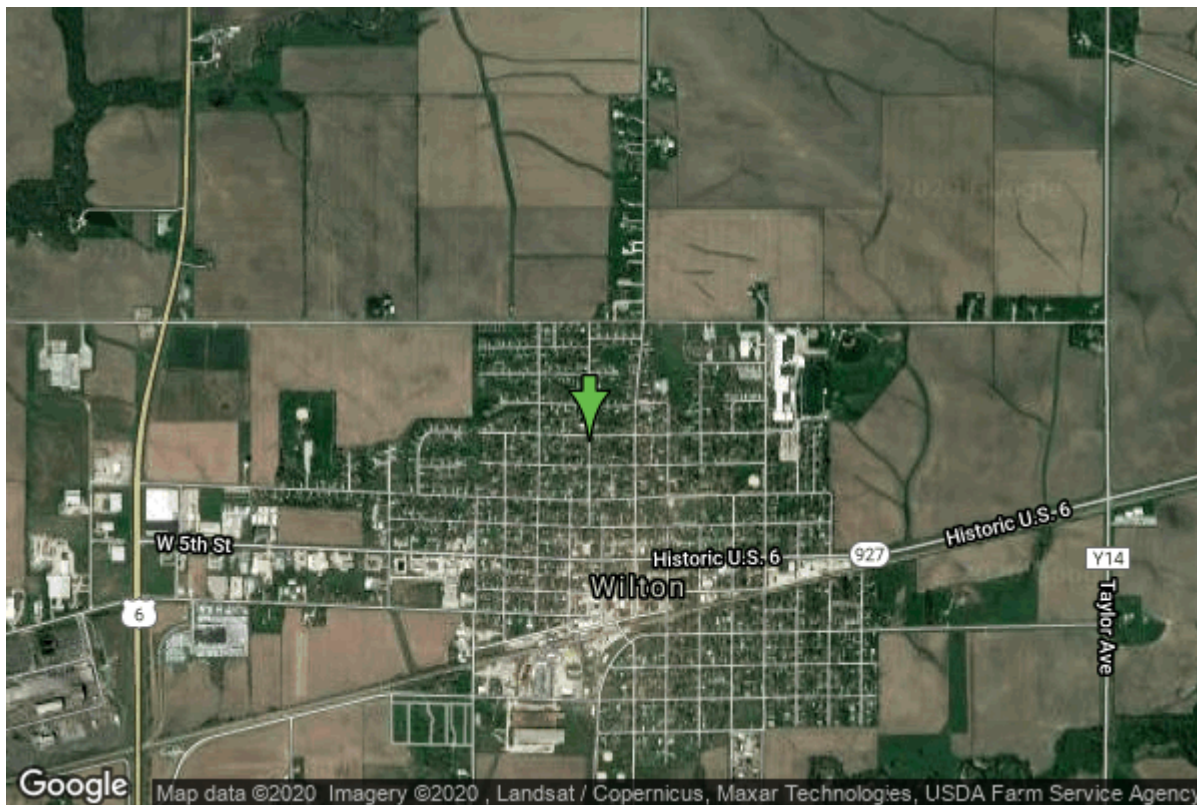


Well W#1472 Information



Date Received		State	Iowa
Owner Name	Wilton, City Of	County	Muscatine
Alt Name	WEST	Quadrangle	Wilton Junction, Iowa
WNumber	1472	Township	T78N
PWTS ID	0	Range	R1W
PWS ID	7078026	Section	6
Storet ID	0	Quarter	NW NW SW
SDWIS ID	0	Latitude	41.5935730000
USGS ID	0	Longitude	-91.0181470000
Project	Source Water Protection	Accuracy	
Operator	Unknown	UTM X	665177
		UTM Y	4606549

Site Type	Drilled hole	Drilling Company	Unknown
Well Status	Not Used	Drilling Date	11/01/1941
Field Located	No	Drilling Method	Unknown
Elevation	708 ft	Bedrock Depth	200 ft
Elevation Accuracy	Digital Elevation Model Accurate to 5 ft	Well Depth	340 ft
Landscape Position	Unknown	Total Depth	340 ft
		Well Types	Municipal
		Aquifers	Silurian

Casing Construction Information

Date	11/01/1941	Casing Type	Steel
Start Depth	0.00 ft	End Depth	278.00 ft

Diameter	6.00 in	Amount	278.00 ft
Comments			

Log Information

Date	
Log Types	Drillers log
Prepared By	Wilton, City Of
Comments	

Date	
Log Types	Strip log
Prepared By	Unknown
Comments	

Stratigraphy Information

System	Quaternary		
Series			
Group			
Formation			
Member			
Submember			
Start Depth	0.00 ft	End Depth	5.00 ft
Contact Accuracy			
Penetration			
Primary Lithology	Soil Or Fill	Percent	100
Secondary Lithology		Percent	
Tertiary Lithology		Percent	
Comments			

System	Quaternary		
Series	Pleistocene Series		
Group			
Formation			
Member			
Submember			
Start Depth	5.00 ft	End Depth	200.00 ft
Contact Accuracy			
Penetration			
Primary Lithology	Clay	Percent	0
Secondary Lithology	Sand	Percent	0
Tertiary Lithology	Silt	Percent	0
Comments			

System	Silurian
Series	

Group			
Formation			
Member			
Submember			
Start Depth	200.00 ft	End Depth	340.00 ft
Contact Accuracy			
Penetration			
Primary Lithology	Dolomite	Percent	100
Secondary Lithology		Percent	
Tertiary Lithology		Percent	
Comments			

Water Production Information

Date		Start Time	
Aquifer	Unknown	Yield	0 gallons per minute
Static Water Level	0.00 ft	Yield Method	Unknown
Pumping Water Level	0 ft	Pump Test	No
Measurement	Unknown	Duration	0 mins
Pump Method	Unknown		
Comments	Formal pump test on file		

Chip Storage Information

Date		Bin	
Storage	WI8-8	Number of Samples	75
Number of Boxes	1	Sample Gaps	330-335
Sample Intervals	0	Sample Bottom	340 ft
Sample Top	0 ft	Washed Bottom	0 ft
Washed Top	0 ft		
Duplicate Storage			
Comments			

<https://www.ihr.uiowa.edu/igs/geosam/well/1472/general-information>