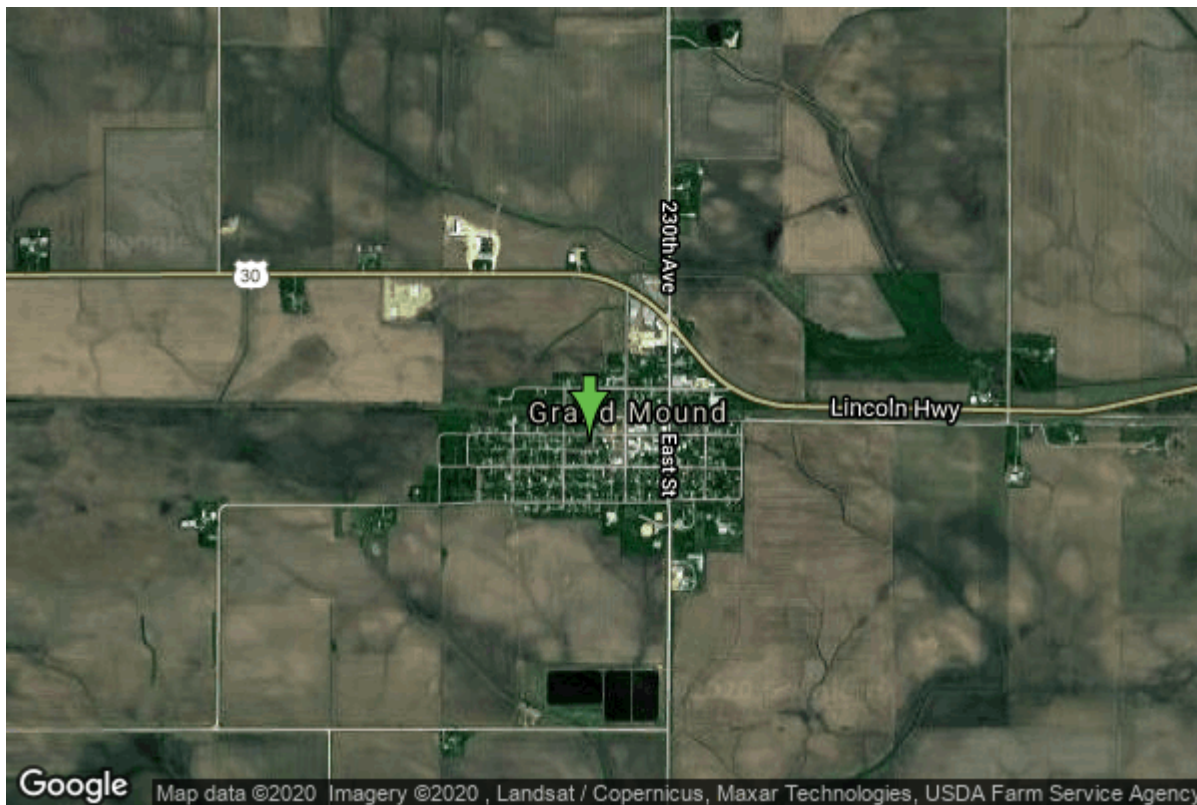


Well W#14998 Information



Date Received		State	Iowa
Owner Name	Grand Mound, City Of	County	Clinton
Alt Name	#2	Quadrangle	Grand Mound, Iowa
WNumber	14998	Township	T81N
PWTS ID	0	Range	R3E
PWS ID	2341099	Section	18
Storet ID	0	Quarter	NE SE NW
SDWIS ID	2411315	Latitude	41.8238700000
USGS ID	0	Longitude	-90.6485470000
Project	Source Water Protection	Accuracy	
Operator	Unknown	UTM X	695284
		UTM Y	4632894

Site Type	Drilled hole	Drilling Company	Thorpe Well Co.
Well Status	Active	Drilling Date	01/19/1963
Field Located	No	Drilling Method	Cable
Elevation	727 ft	Bedrock Depth	100 ft
Elevation Accuracy	Digital Elevation Model	Well Depth	251 ft
	Accurate to 5 ft	Total Depth	251 ft
Landscape Position	Unknown	Well Types	Municipal, Public Supply
		Aquifers	Silurian

Casing Construction Information

Date	01/19/1963	Casing Type	Unknown
Start Depth	0.00 ft	End Depth	17.00 ft

Diameter	16.00 in	Amount	17.00 ft
Comments			

Date	01/19/1963	Casing Type	Unknown
Start Depth	0.00 ft	End Depth	87.00 ft
Diameter	10.00 in	Amount	87.00 ft
Comments			

Log Information

Date	01/13/1964
Log Types	Strip log
Prepared By	Unknown
Comments	

Date	01/19/1963
Log Types	Drillers log
Prepared By	Thorpe Well Co.
Comments	

Stratigraphy Information

System	Quaternary		
Series	Pleistocene Series		
Group	Pre-Illinoian		
Formation			
Member			
Submember			
Start Depth	0.00 ft	End Depth	75.00 ft
Contact Accuracy			
Penetration			
Primary Lithology	Till	Percent	100
Secondary Lithology		Percent	
Tertiary Lithology		Percent	
Comments			

System	Silurian		
Series			
Group			
Formation			
Member			
Submember			
Start Depth	75.00 ft	End Depth	251.00 ft
Contact Accuracy			
Penetration			
Primary Lithology	Dolomite	Percent	100
Secondary Lithology		Percent	

Tertiary Lithology
Comments

Percent

Water Production Information

Date	01/19/1963	Start Time	
Aquifer	Unknown	Yield	150 gallons per minute
Static Water Level	39.00 ft	Yield Method	Unknown
Pumping Water Level	70 ft	Pump Test	No
Measurement	Unknown	Duration	0 mins
Pump Method	Unknown		
Comments			

Chip Storage Information

Date	08/15/1963	Bin	
Storage	TL4-995	Number of Samples	47
Number of Boxes	1	Sample Gaps	80-85,175-185
Sample Intervals	5	Sample Bottom	250 ft
Sample Top	0 ft	Washed Bottom	250 ft
Washed Top	75 ft		
Duplicate Storage			
Comments			

<https://www.iihr.uiowa.edu/igs/geosam/well/14998/general-information>