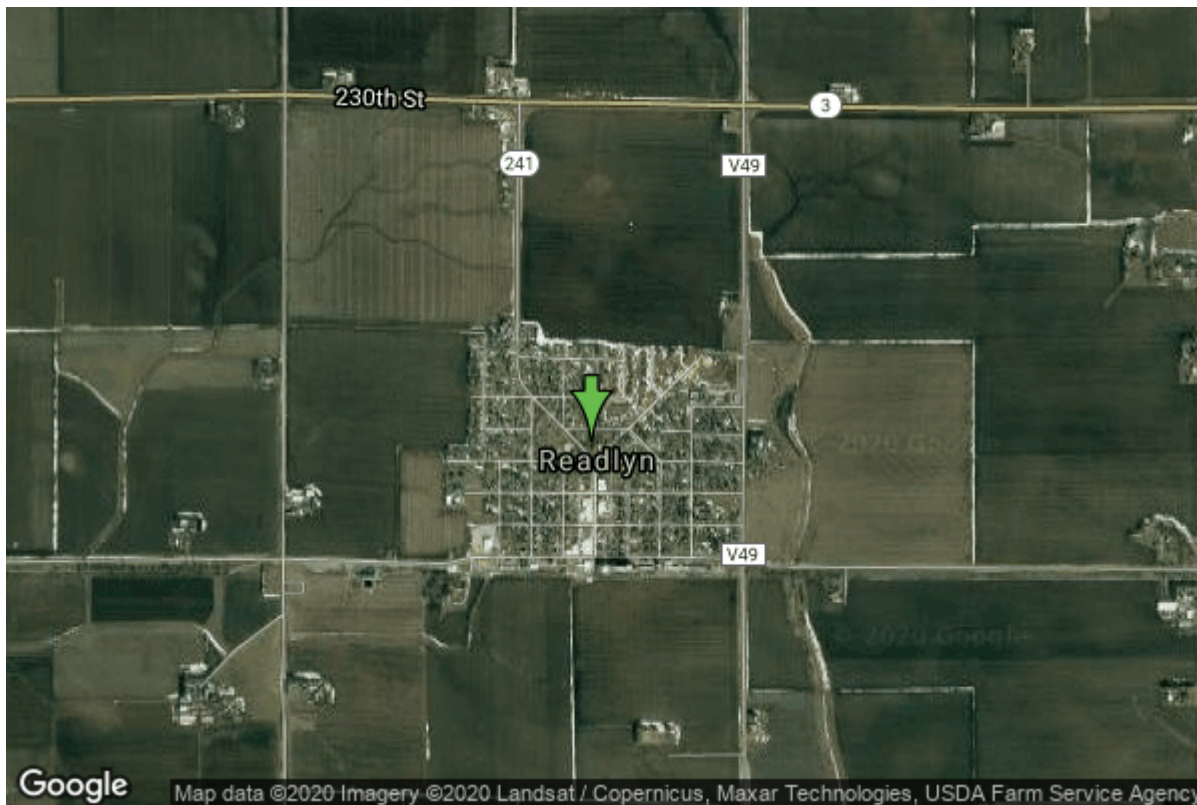


# Well W#1544 Information



<b>Date Received</b>		<b>State</b>	Iowa
<b>Owner Name</b>	Readlyn, City Of	<b>County</b>	Bremer
<b>Alt Name</b>		<b>Quadrangle</b>	Readlyn, Iowa
<b>WNumber</b>	1544	<b>Township</b>	T91N
<b>PWTS ID</b>	0	<b>Range</b>	R12W
<b>PWS ID</b>	965073	<b>Section</b>	11
<b>Storet ID</b>	0	<b>Quarter</b>	SE NW SE
<b>SDWIS ID</b>	0	<b>Latitude</b>	42.7042480000
<b>USGS ID</b>	0	<b>Longitude</b>	-92.2248790000
<b>Project</b>	Source Water Protection	<b>Accuracy</b>	
<b>Operator</b>	Unknown	<b>UTM X</b>	563481
		<b>UTM Y</b>	4728264

<b>Site Type</b>	Drilled hole	<b>Drilling Company</b>	Unknown
<b>Well Status</b>	Not Used	<b>Drilling Date</b>	06/13/1942
<b>Field Located</b>	No	<b>Drilling Method</b>	Unknown
<b>Elevation</b>	1037 ft	<b>Bedrock Depth</b>	80 ft
<b>Elevation Accuracy</b>	Digital Elevation Model Accurate to 5 ft	<b>Well Depth</b>	952 ft
<b>Landscape Position</b>	Unknown	<b>Total Depth</b>	952 ft
		<b>Well Types</b>	Municipal
		<b>Aquifers</b>	Ordovician

## Hole Construction Information

<b>Date</b>	06/13/1942	<b>Depth</b>	150.00 ft
<b>Diameter</b>	14.00 in		

## Comments

---

Date	06/13/1942	Depth	808.00 ft
Diameter	0.00 in		
Comments			

## Casing Construction Information

Date	06/13/1942	Casing Type	Steel
Start Depth	0.00 ft	End Depth	150.00 ft
Diameter	10.00 in	Amount	150.00 ft
Comments			

---

Date	06/13/1942	Casing Type	Steel
Start Depth	134.00 ft	End Depth	420.00 ft
Diameter	8.00 in	Amount	286.00 ft
Comments			

---

Date	06/13/1942	Casing Type	Steel
Start Depth	649.00 ft	End Depth	713.00 ft
Diameter	6.00 in	Amount	0.00 ft
Comments			

---

Date	06/13/1942	Casing Type	Perforated Steel
Start Depth	713.00 ft	End Depth	808.00 ft
Diameter	6.00 in	Amount	95.00 ft
Comments			

---

Date	06/13/1942	Casing Type	Perforated Steel
Start Depth	0.00 ft	End Depth	0.00 ft
Diameter	0.00 in	Amount	0.00 ft
Comments			

## Log Information

Date	
Log Types	Unknown
Prepared By	Unknown
Comments	

---

Date	
Log Types	Strip log
Prepared By	Unknown
Comments	

# Stratigraphy Information

<b>System</b>	Quaternary		
<b>Series</b>	Pleistocene Series		
<b>Group</b>	Pre-Illinoian		
<b>Formation</b>			
<b>Member</b>			
<b>Submember</b>			
<b>Start Depth</b>	0.00 ft	<b>End Depth</b>	80.00 ft
<b>Contact Accuracy</b>			
<b>Penetration</b>			
<b>Primary Lithology</b>	Till	<b>Percent</b>	100
<b>Secondary Lithology</b>		<b>Percent</b>	
<b>Tertiary Lithology</b>		<b>Percent</b>	
<b>Comments</b>			

---

<b>System</b>	Silurian		
<b>Series</b>			
<b>Group</b>			
<b>Formation</b>			
<b>Member</b>			
<b>Submember</b>			
<b>Start Depth</b>	80.00 ft	<b>End Depth</b>	153.00 ft
<b>Contact Accuracy</b>			
<b>Penetration</b>			
<b>Primary Lithology</b>	Dolomite	<b>Percent</b>	0
<b>Secondary Lithology</b>	Chert/Chalcedony	<b>Percent</b>	0
<b>Tertiary Lithology</b>	Shale	<b>Percent</b>	0
<b>Comments</b>			

---

<b>System</b>	Ordovician		
<b>Series</b>			
<b>Group</b>			
<b>Formation</b>	Maquoketa		
<b>Member</b>			
<b>Submember</b>			
<b>Start Depth</b>	153.00 ft	<b>End Depth</b>	440.00 ft
<b>Contact Accuracy</b>			
<b>Penetration</b>			
<b>Primary Lithology</b>	Shale	<b>Percent</b>	0
<b>Secondary Lithology</b>	Dolomite	<b>Percent</b>	0
<b>Tertiary Lithology</b>		<b>Percent</b>	
<b>Comments</b>			

---

<b>System</b>	Ordovician		
<b>Series</b>			
<b>Group</b>	Galena		
<b>Formation</b>	Dubuque		

<b>Member</b>			
<b>Submember</b>			
<b>Start Depth</b>	440.00 ft	<b>End Depth</b>	475.00 ft
<b>Contact Accuracy</b>			
<b>Penetration</b>			
<b>Primary Lithology</b>	Ls/Dol Mixed	<b>Percent</b>	100
<b>Secondary Lithology</b>		<b>Percent</b>	
<b>Tertiary Lithology</b>		<b>Percent</b>	
<b>Comments</b>			

---

<b>System</b>	Ordovician		
<b>Series</b>			
<b>Group</b>	Galena		
<b>Formation</b>	Wise Lake		
<b>Member</b>			
<b>Submember</b>			
<b>Start Depth</b>	475.00 ft	<b>End Depth</b>	525.00 ft
<b>Contact Accuracy</b>			
<b>Penetration</b>			
<b>Primary Lithology</b>	Ls/Dol Mixed	<b>Percent</b>	100
<b>Secondary Lithology</b>		<b>Percent</b>	
<b>Tertiary Lithology</b>		<b>Percent</b>	
<b>Comments</b>			

---

<b>System</b>	Ordovician		
<b>Series</b>			
<b>Group</b>	Galena		
<b>Formation</b>	Dunleith		
<b>Member</b>			
<b>Submember</b>			
<b>Start Depth</b>	525.00 ft	<b>End Depth</b>	660.00 ft
<b>Contact Accuracy</b>			
<b>Penetration</b>			
<b>Primary Lithology</b>	Ls/Dol Mixed	<b>Percent</b>	0
<b>Secondary Lithology</b>	Chert/Chalcedony	<b>Percent</b>	0
<b>Tertiary Lithology</b>		<b>Percent</b>	
<b>Comments</b>			

---

<b>System</b>	Ordovician		
<b>Series</b>			
<b>Group</b>	Galena		
<b>Formation</b>	Decorah		
<b>Member</b>			
<b>Submember</b>			
<b>Start Depth</b>	660.00 ft	<b>End Depth</b>	740.00 ft
<b>Contact Accuracy</b>			
<b>Penetration</b>			
<b>Primary Lithology</b>	Limestone	<b>Percent</b>	0
<b>Secondary Lithology</b>	Shale	<b>Percent</b>	0

Tertiary Lithology		Percent	
Comments			
<b>System</b>	Ordovician		
<b>Series</b>			
<b>Group</b>	Ancell		
<b>Formation</b>	Glenwood		
<b>Member</b>			
<b>Submember</b>			
<b>Start Depth</b>	740.00 ft	<b>End Depth</b>	750.00 ft
<b>Contact Accuracy</b>			
<b>Penetration</b>			
<b>Primary Lithology</b>	Shale	<b>Percent</b>	100
<b>Secondary Lithology</b>		<b>Percent</b>	
<b>Tertiary Lithology</b>		<b>Percent</b>	
<b>Comments</b>			
<b>System</b>	Ordovician		
<b>Series</b>			
<b>Group</b>	Ancell		
<b>Formation</b>	St. Peter Sandstone		
<b>Member</b>			
<b>Submember</b>			
<b>Start Depth</b>	750.00 ft	<b>End Depth</b>	797.00 ft
<b>Contact Accuracy</b>			
<b>Penetration</b>			
<b>Primary Lithology</b>	Sandstone	<b>Percent</b>	100
<b>Secondary Lithology</b>		<b>Percent</b>	
<b>Tertiary Lithology</b>		<b>Percent</b>	
<b>Comments</b>			
<b>System</b>	Ordovician		
<b>Series</b>			
<b>Group</b>	Prairie Du Chien		
<b>Formation</b>			
<b>Member</b>			
<b>Submember</b>			
<b>Start Depth</b>	797.00 ft	<b>End Depth</b>	952.00 ft
<b>Contact Accuracy</b>			
<b>Penetration</b>			
<b>Primary Lithology</b>	Dolomite	<b>Percent</b>	0
<b>Secondary Lithology</b>	Sandstone	<b>Percent</b>	0
<b>Tertiary Lithology</b>	Chert/Chalcedony	<b>Percent</b>	0
<b>Comments</b>			

## Water Production Information

<b>Date</b>	06/13/1942	<b>Start Time</b>	
<b>Aquifer</b>	Unknown		
<b>Static Water Level</b>	34.00 ft	<b>Yield</b>	130 gallons per minute
<b>Pumping Water Level</b>	77 ft	<b>Yield Method</b>	Unknown
<b>Measurement</b>	Unknown	<b>Pump Test</b>	No
<b>Pump Method</b>	Unknown	<b>Duration</b>	0 mins
<b>Comments</b>			

## Chip Storage Information

<b>Date</b>		<b>Bin</b>	
<b>Storage</b>	WJ4-9,10	<b>Number of Samples</b>	160
<b>Number of Boxes</b>	2	<b>Sample Gaps</b>	868-950
<b>Sample Intervals</b>	0	<b>Sample Bottom</b>	868 ft
<b>Sample Top</b>	0 ft	<b>Washed Bottom</b>	450 ft
<b>Washed Top</b>	80 ft		
<b>Duplicate Storage</b>			
<b>Comments</b>			

<https://www.iuhr.uiowa.edu/igs/geosam/well/1544/general-information>