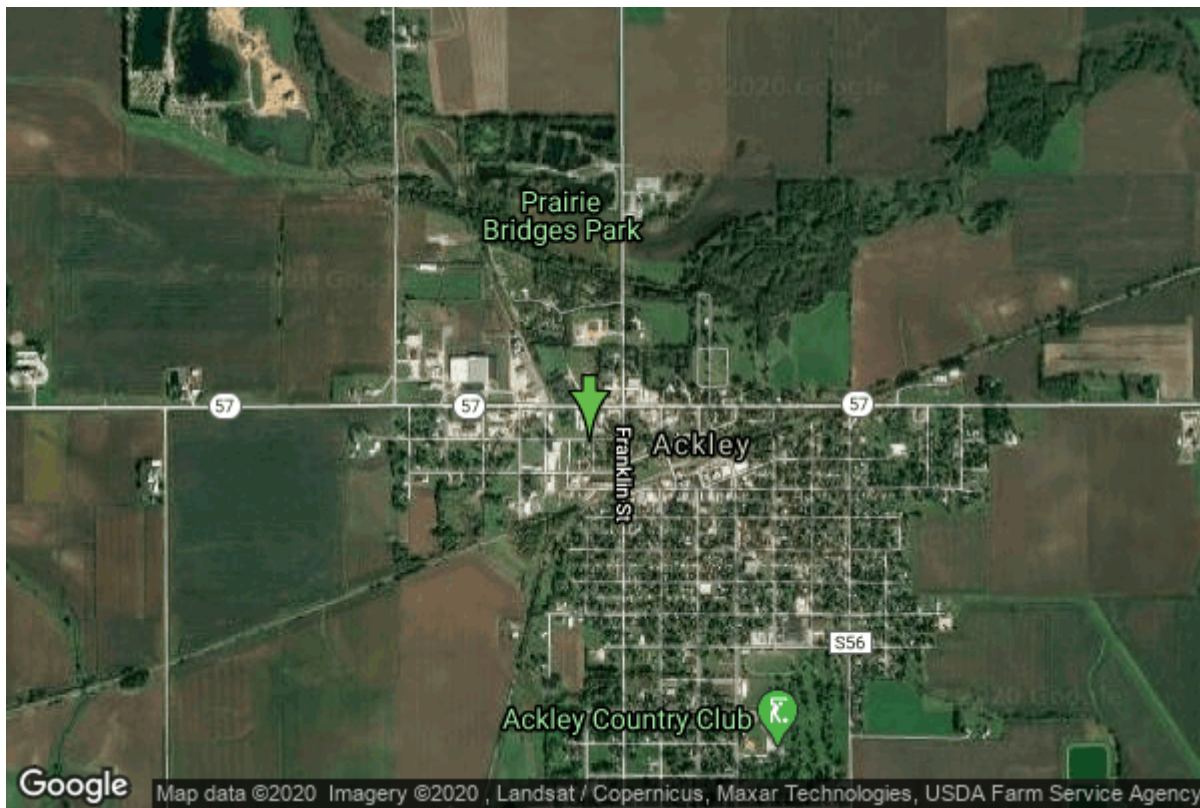


Well W#1576 Information



Date Received		State	Iowa
Owner Name	Ackley, City Of	County	Hardin
Alt Name	#3	Quadrangle	Ackley, Iowa
WNumber	1576	Township	T89N
PWTS ID	0	Range	R19W
PWS ID	4201001	Section	2
Storet ID	0	Quarter	NW NE NE
SDWIS ID	2409074	Latitude	42.5556300000
USGS ID	0	Longitude	-93.0570500000
Project Operator	Source Water Protection Unknown	Accuracy	
		UTM X	495317
		UTM Y	4711472

Site Type	Drilled hole	Drilling Company	Hoeg & Ames (H.M. White)
Well Status	Not Used	Drilling Date	07/11/1942
Field Located	No	Drilling Method	Unknown
Elevation	1090 ft	Bedrock Depth	60 ft
Elevation Accuracy	Digital Elevation Model Accurate to 5 ft	Well Depth	140 ft
Landscape Position	Hillside	Total Depth	140 ft
		Well Types	Municipal, Public Supply
		Aquifers	Mississippian, Silurian/Devonian

Casing Construction Information

Date	07/11/1942	Casing Type	Steel
Start Depth	-0.80 ft	End Depth	75.00 ft
Diameter	10.00 in	Amount	75.80 ft
Comments			

Grout Construction Information

Date	07/11/1942	Grout Placement	Unknown
Grout Type	Cement	End Depth	75.00 ft
Start Depth	0.00 ft		
Comments			

Log Information

Date	07/14/1942
Log Types	Strip log
Prepared By	Unknown
Comments	

Date	
Log Types	Drillers log
Prepared By	Ackley, City Of
Comments	

Stratigraphy Information

System	Quaternary		
Series	Pleistocene Series		
Group			
Formation			
Member			
Submember			
Start Depth	0.00 ft	End Depth	60.00 ft
Contact Accuracy			
Penetration			
Primary Lithology	Clay	Percent	0
Secondary Lithology	Sand	Percent	0
Tertiary Lithology		Percent	
Comments			

System	Mississippian (Subsystem Of Carboniferous System)
Series	
Group	Sub-Augusta

Formation Member Submember	Maynes Creek		
Start Depth	60.00 ft	End Depth	120.00 ft
Contact Accuracy Penetration			
Primary Lithology	Dolomite	Percent	0
Secondary Lithology	Chert/Chalcedony	Percent	0
Tertiary Lithology		Percent	
Comments			

System Series	Mississippian (Subsystem Of Carboniferous System)		
Group	North Hill		
Formation Member	Prospect Hill		
Submember			
Start Depth	120.00 ft	End Depth	125.00 ft
Contact Accuracy Penetration			
Primary Lithology	Siltstone	Percent	100
Secondary Lithology		Percent	
Tertiary Lithology		Percent	
Comments			

System Series	Devonian		
Group	Yellow Spring (New Albany)		
Formation Member	Aplington		
Submember			
Start Depth	125.00 ft	End Depth	138.00 ft
Contact Accuracy Penetration			
Primary Lithology	Dolomite	Percent	100
Secondary Lithology		Percent	
Tertiary Lithology		Percent	
Comments			

System Series	Devonian		
Group	Yellow Spring (New Albany)		
Formation Member	Sheffield		
Submember			
Start Depth	138.00 ft	End Depth	140.00 ft
Contact Accuracy Penetration			
Primary Lithology	Shale	Percent	100

Secondary Lithology
Tertiary Lithology
Comments

Percent
Percent

Water Production Information

Date	07/11/1942	Start Time	
Aquifer	Unknown	Yield	134 gallons per minute
Static Water Level	33.00 ft	Yield Method	Unknown
Pumping Water Level	126 ft	Pump Test	Yes
Measurement	Unknown	Duration	0 mins
Pump Method	Unknown		
Comments			

Chip Storage Information

Date		Bin	
Storage	WJ6-8	Number of Samples	27
Number of Boxes	1	Sample Gaps	75-80
Sample Intervals	5	Sample Bottom	140 ft
Sample Top	0 ft	Washed Bottom	0 ft
Washed Top	0 ft		
Duplicate Storage			
Comments			

<https://www.iuhr.uiowa.edu/igs/geosam/well/1576/general-information>