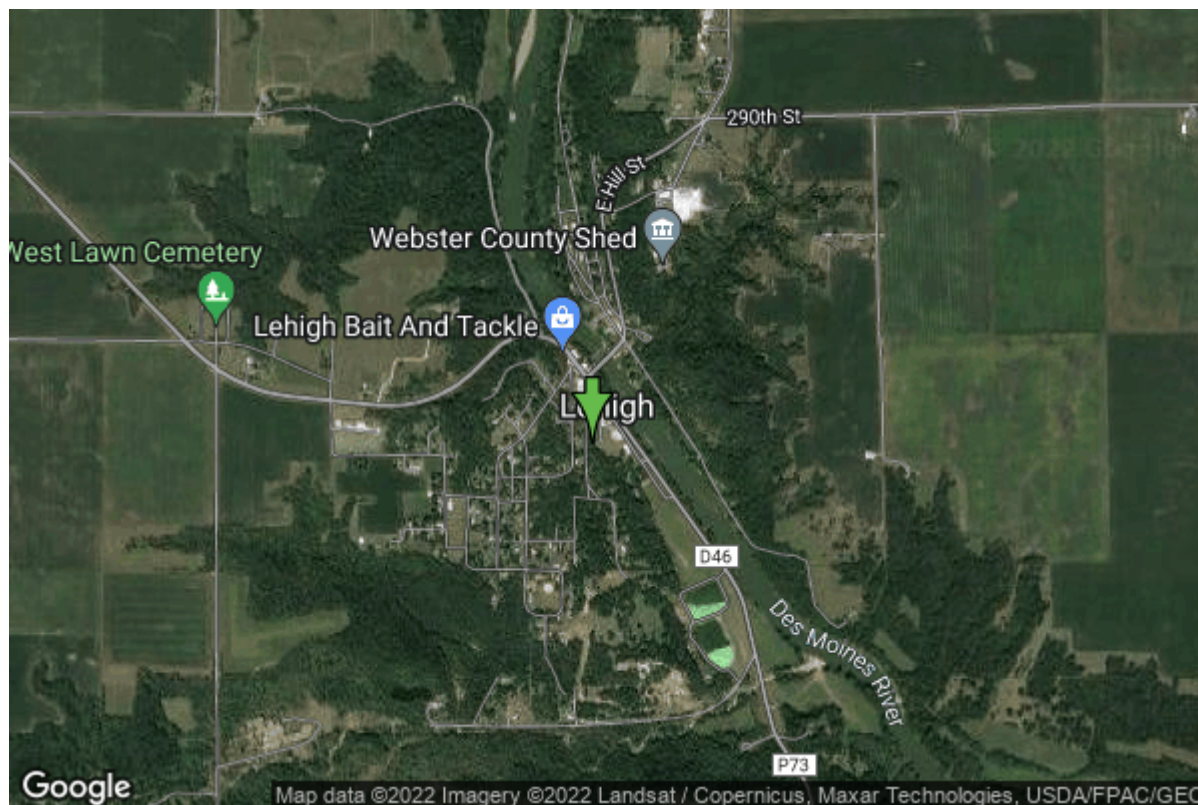


Well W#15859 Information



Date Received		State	Iowa
Owner Name	Lehigh, City Of	County	Webster
Alt Name	#3	Quadrangle	Lehigh, Iowa
WNumber	15859	Township	T87N
PWTS ID	0	Range	R28W
PWS ID	9453071	Section	12
Storet ID	0	Quarter	SE NE SW
SDWIS ID	2411500	Latitude	42.3578850000
USGS ID	0	Longitude	-94.0508790000
Project	Source Water Protection	Accuracy	
Operator	Unknown	UTM X	413458
		UTM Y	4690048

Site Type	Drilled hole	Drilling Company	Layne Western - Ia.
Well Status	Not Used	Drilling Date	01/01/1963
Field Located	No	Drilling Method	Rotary
Elevation	954 ft	Bedrock Depth	0 ft
Elevation Accuracy	Digital Elevation Model Accurate to 5 ft	Well Depth	35 ft
Landscape Position	Unknown	Total Depth	35 ft
		Well Types	Municipal, Public Supply
		Aquifers	Alluvium

Log Information

Date	11/14/1968
Log Types	Strip log

Prepared By Unknown
Comments

Date
Log Types Drillers log
Prepared By Lehigh, City Of
Comments

Stratigraphy Information

System Quaternary
Series Pleistocene Series
Group Wisconsinan Episode
Formation Noah Creek
Member
Submember
Start Depth 0.00 ft **End Depth** 35.00 ft
Contact Accuracy
Penetration
Primary Lithology Sand And Gravel **Percent** 100
Secondary Lithology **Percent**
Tertiary Lithology **Percent**
Comments

Chip Storage Information

Date 12/30/1963
Storage TL5-296 **Bin**
Number of Boxes 1 **Number of Samples** 7
Sample Intervals 5 **Sample Gaps**
Sample Top 0 ft **Sample Bottom** 35 ft
Washed Top 0 ft **Washed Bottom** 0 ft
Duplicate Storage
Comments

<https://www.iihr.uiowa.edu/igs/geosam/well/15859/general-information>