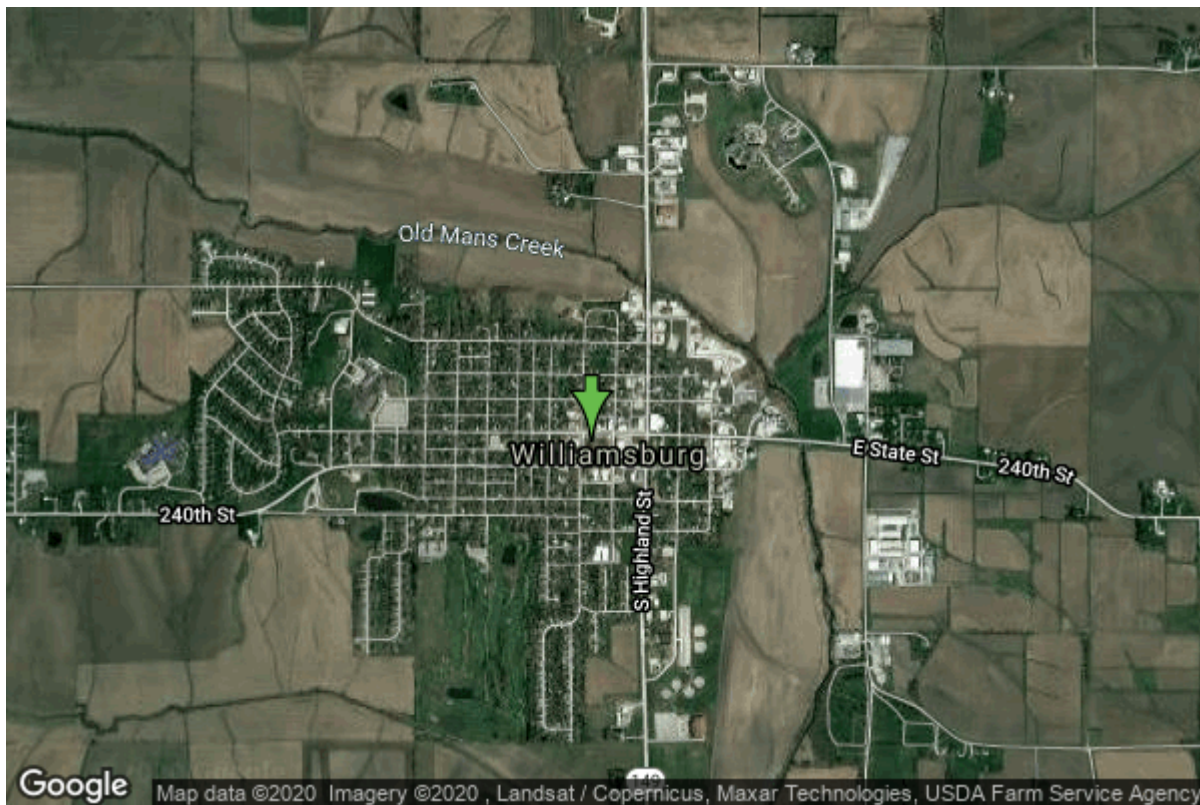


# Well W#15893 Information



<b>Date Received</b>		<b>State</b>	Iowa
<b>Owner Name</b>	Williamsburg, City Of	<b>County</b>	Iowa
<b>Alt Name</b>	#3	<b>Quadrangle</b>	Williamsburg, Iowa
<b>WNumber</b>	15893	<b>Township</b>	T79N
<b>PWTS ID</b>	0	<b>Range</b>	R10W
<b>PWS ID</b>	4884023	<b>Section</b>	9
<b>Storet ID</b>	0	<b>Quarter</b>	SE SE NE
<b>SDWIS ID</b>	2411888	<b>Latitude</b>	41.6615080000
<b>USGS ID</b>	0	<b>Longitude</b>	-92.0091020000
<b>Project</b>	Source Water Protection	<b>Accuracy</b>	
<b>Operator</b>	Unknown	<b>UTM X</b>	582498
		<b>UTM Y</b>	4612669

---

<b>Site Type</b>	Drilled hole	<b>Drilling Company</b>	Hoeg & Ames (H.M. White)
<b>Well Status</b>	Not Used	<b>Drilling Date</b>	08/27/1963
<b>Field Located</b>	No	<b>Drilling Method</b>	Unknown
<b>Elevation</b>	820 ft	<b>Bedrock Depth</b>	0 ft
<b>Elevation Accuracy</b>	Digital Elevation Model Accurate to 5 ft	<b>Well Depth</b>	160 ft
<b>Landscape Position</b>	Unknown	<b>Total Depth</b>	160 ft
		<b>Well Types</b>	Municipal, Public Supply
		<b>Aquifers</b>	Pleistocene

## Casing Construction Information

Date	08/27/1963	Casing Type	Unknown
Start Depth	0.00 ft	End Depth	0.00 ft
Diameter	10.00 in	Amount	145.90 ft
Comments			

## Screen Construction Information

Date	08/27/1963	Slot Size	0.03
Screen Type	Unknown	End Depth	0.00 ft
Start Depth	0.00 ft	Amount	10 ft
Diameter	10.00 in		
Comments			

## Grout Construction Information

Date	08/27/1963	Grout Placement	Unknown
Grout Type	Cement	End Depth	25.00 ft
Start Depth	0.00 ft		
Comments			

## Log Information

Date	01/14/1964
Log Types	Strip log
Prepared By	Northup, Dick
Comments	

---

Date	
Log Types	Drillers log
Prepared By	Williamsburg, City Of
Comments	

## Stratigraphy Information

System	Quaternary		
Series			
Group			
Formation			
Member			
Submember			
Start Depth	0.00 ft	End Depth	1.00 ft
Contact Accuracy			
Penetration			

<b>Primary Lithology</b>	Soil Or Fill	<b>Percent</b>	100
<b>Secondary Lithology</b>		<b>Percent</b>	
<b>Tertiary Lithology</b>		<b>Percent</b>	
<b>Comments</b>			

---

<b>System</b>	Quaternary		
<b>Series</b>			
<b>Group</b>			
<b>Formation</b>			
<b>Member</b>			
<b>Submember</b>			
<b>Start Depth</b>	1.00 ft	<b>End Depth</b>	15.00 ft
<b>Contact Accuracy</b>			
<b>Penetration</b>			
<b>Primary Lithology</b>	Loess	<b>Percent</b>	100
<b>Secondary Lithology</b>		<b>Percent</b>	
<b>Tertiary Lithology</b>		<b>Percent</b>	
<b>Comments</b>			

---

<b>System</b>	Quaternary		
<b>Series</b>	Pleistocene Series		
<b>Group</b>			
<b>Formation</b>			
<b>Member</b>			
<b>Submember</b>			
<b>Start Depth</b>	15.00 ft	<b>End Depth</b>	160.00 ft
<b>Contact Accuracy</b>			
<b>Penetration</b>			
<b>Primary Lithology</b>	Till	<b>Percent</b>	0
<b>Secondary Lithology</b>	Sand And Gravel	<b>Percent</b>	0
<b>Tertiary Lithology</b>		<b>Percent</b>	
<b>Comments</b>			

## Water Production Information

<b>Date</b>	08/27/1963	<b>Start Time</b>	
<b>Aquifer</b>	Unknown		
<b>Static Water Level</b>	126.00 ft	<b>Yield</b>	195 gallons per minute
<b>Pumping Water Level</b>	146 ft	<b>Yield Method</b>	Unknown
<b>Measurement</b>	Unknown	<b>Pump Test</b>	No
<b>Pump Method</b>	Unknown	<b>Duration</b>	0 mins
<b>Comments</b>			

## Chip Storage Information

<b>Date</b>	01/06/1964		
<b>Storage</b>	TL5-308	<b>Bin</b>	

<b>Number of Boxes</b>	1	<b>Number of Samples</b>	31
<b>Sample Intervals</b>	5	<b>Sample Gaps</b>	140-145
<b>Sample Top</b>	0 ft	<b>Sample Bottom</b>	160 ft
<b>Washed Top</b>	0 ft	<b>Washed Bottom</b>	0 ft
<b>Duplicate Storage</b>			
<b>Comments</b>			

<https://www.iihr.uiowa.edu/igs/geosam/well/15893/general-information>