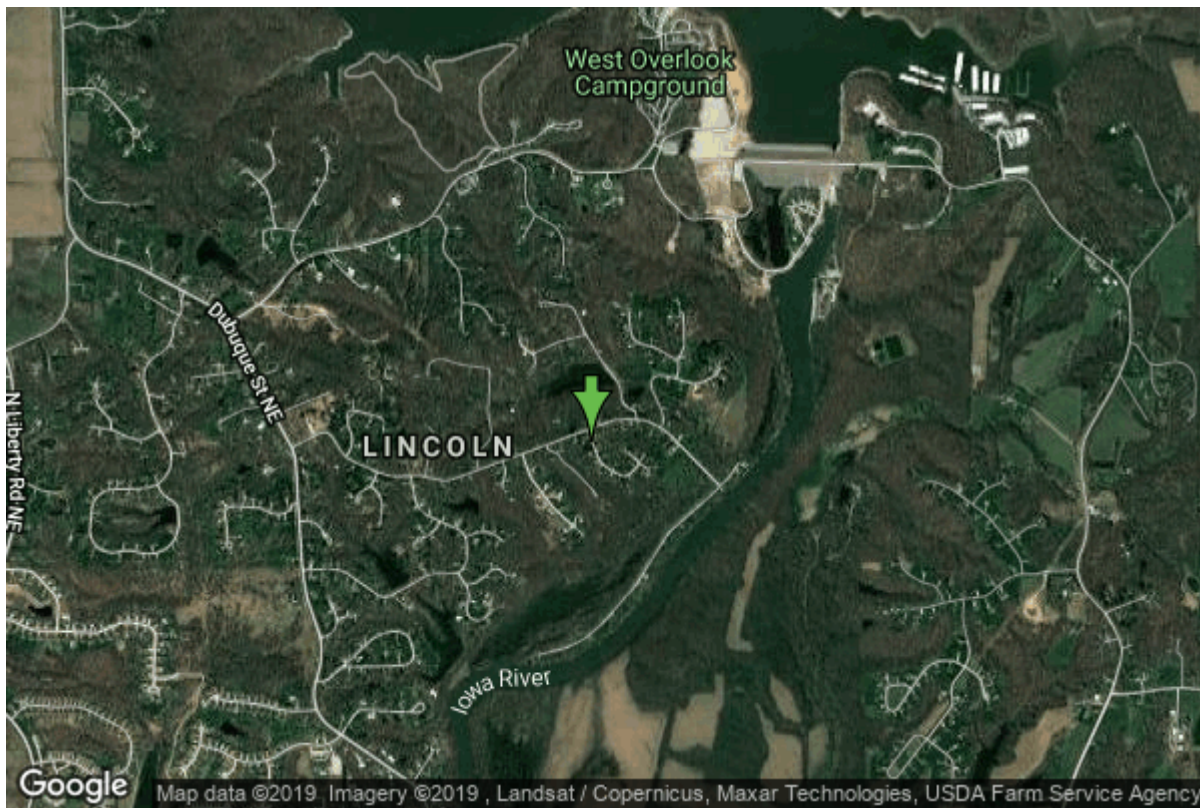


# Well W#16174 Information



<b>Date Received</b>		<b>State</b>	Iowa
<b>Owner Name</b>	Riverview Estates	<b>County</b>	Johnson
<b>Alt Name</b>	RIVERVIEW ESTATES OWNERS ASSN.	<b>Quadrangle</b>	Iowa City West, Iowa
<b>WNumber</b>	16174	<b>Township</b>	T80N
<b>PWTS ID</b>	0	<b>Range</b>	R6W
<b>PWS ID</b>	5200347	<b>Section</b>	22
<b>Storet ID</b>	0	<b>Quarter</b>	SW SW SE
<b>SDWIS ID</b>	2408884	<b>Latitude</b>	41.7156070000
<b>USGS ID</b>	414254091321201	<b>Longitude</b>	-91.5378190000
<b>Project</b>	Source Water Protection	<b>Accuracy</b>	
<b>Operator</b>	Unknown	<b>UTM X</b>	621634
		<b>UTM Y</b>	4619234

---

<b>Site Type</b>	Drilled hole	<b>Drilling Company</b>	Edwards Inc., D.E.
<b>Well Status</b>	Active	<b>Drilling Date</b>	11/05/1963
<b>Field Located</b>	No	<b>Drilling Method</b>	Unknown
<b>Elevation</b>	744 ft	<b>Bedrock Depth</b>	53 ft
<b>Elevation Accuracy</b>	Digital Elevation Model Accurate to 5 ft	<b>Well Depth</b>	293 ft
<b>Landscape Position</b>	Upland	<b>Total Depth</b>	293 ft
		<b>Well Types</b>	Public Supply, Subdivision
		<b>Aquifers</b>	Silurian

# Casing Construction Information

<b>Date</b>	11/05/1963	<b>Casing Type</b>	Steel
<b>Start Depth</b>	-2.00 ft	<b>End Depth</b>	183.00 ft
<b>Diameter</b>	6.00 in	<b>Amount</b>	185.00 ft
<b>Comments</b>			

# Log Information

<b>Date</b>	05/07/1969
<b>Log Types</b>	Strip log
<b>Prepared By</b>	Northup, Richard Cox
<b>Comments</b>	

---

<b>Date</b>	
<b>Log Types</b>	Unknown
<b>Prepared By</b>	Unknown
<b>Comments</b>	

# Stratigraphy Information

<b>System</b>	Quaternary		
<b>Series</b>	Pleistocene Series		
<b>Group</b>	Wisconsinan Episode		
<b>Formation</b>	Peoria		
<b>Member</b>			
<b>Submember</b>			
<b>Start Depth</b>	0.00 ft	<b>End Depth</b>	5.00 ft
<b>Contact Accuracy</b>			
<b>Penetration</b>			
<b>Primary Lithology</b>	Loess	<b>Percent</b>	100
<b>Secondary Lithology</b>	Unknown	<b>Percent</b>	0
<b>Tertiary Lithology</b>	Unknown	<b>Percent</b>	0
<b>Comments</b>			

---

<b>System</b>	Quaternary		
<b>Series</b>	Pleistocene Series		
<b>Group</b>			
<b>Formation</b>			
<b>Member</b>			
<b>Submember</b>			
<b>Start Depth</b>	5.00 ft	<b>End Depth</b>	53.00 ft
<b>Contact Accuracy</b>			
<b>Penetration</b>			
<b>Primary Lithology</b>	Till	<b>Percent</b>	0
<b>Secondary Lithology</b>	Sand	<b>Percent</b>	0

Tertiary Lithology		Percent	
Comments			
<b>System</b>	Devonian		
<b>Series</b>			
<b>Group</b>	Cedar Valley		
<b>Formation</b>	Little Cedar		
<b>Member</b>	Rapid		
<b>Submember</b>			
<b>Start Depth</b>	53.00 ft	<b>End Depth</b>	60.00 ft
<b>Contact Accuracy</b>			
<b>Penetration</b>			
<b>Primary Lithology</b>	Limestone	<b>Percent</b>	100
<b>Secondary Lithology</b>		<b>Percent</b>	
<b>Tertiary Lithology</b>		<b>Percent</b>	
<b>Comments</b>			
<b>System</b>	Devonian		
<b>Series</b>			
<b>Group</b>	Cedar Valley		
<b>Formation</b>	Little Cedar		
<b>Member</b>	Solon		
<b>Submember</b>			
<b>Start Depth</b>	60.00 ft	<b>End Depth</b>	135.00 ft
<b>Contact Accuracy</b>			
<b>Penetration</b>			
<b>Primary Lithology</b>	Limestone	<b>Percent</b>	0
<b>Secondary Lithology</b>	Dolomite	<b>Percent</b>	0
<b>Tertiary Lithology</b>		<b>Percent</b>	
<b>Comments</b>			
<b>System</b>	Devonian		
<b>Series</b>			
<b>Group</b>	Wapsipinicon		
<b>Formation</b>	Pinicon Ridge		
<b>Member</b>	Davenport		
<b>Submember</b>			
<b>Start Depth</b>	135.00 ft	<b>End Depth</b>	152.00 ft
<b>Contact Accuracy</b>			
<b>Penetration</b>			
<b>Primary Lithology</b>	Limestone	<b>Percent</b>	0
<b>Secondary Lithology</b>	Dolomite	<b>Percent</b>	0
<b>Tertiary Lithology</b>		<b>Percent</b>	
<b>Comments</b>			
<b>System</b>	Devonian		
<b>Series</b>			
<b>Group</b>	Wapsipinicon		
<b>Formation</b>	Pinicon Ridge		

<b>Member</b>	Spring Grove		
<b>Submember</b>			
<b>Start Depth</b>	152.00 ft	<b>End Depth</b>	175.00 ft
<b>Contact Accuracy Penetration</b>			
<b>Primary Lithology</b>	Dolomite	<b>Percent</b>	100
<b>Secondary Lithology</b>		<b>Percent</b>	
<b>Tertiary Lithology</b>		<b>Percent</b>	
<b>Comments</b>			

---

<b>System</b>	Devonian		
<b>Series</b>			
<b>Group</b>	Wapsipinicon		
<b>Formation</b>	Pinicon Ridge		
<b>Member</b>	Kenwood		
<b>Submember</b>			
<b>Start Depth</b>	175.00 ft	<b>End Depth</b>	187.00 ft
<b>Contact Accuracy Penetration</b>			
<b>Primary Lithology</b>	Dolomite	<b>Percent</b>	0
<b>Secondary Lithology</b>	Shale	<b>Percent</b>	0
<b>Tertiary Lithology</b>		<b>Percent</b>	
<b>Comments</b>			

---

<b>System</b>	Silurian		
<b>Series</b>			
<b>Group</b>			
<b>Formation</b>			
<b>Member</b>			
<b>Submember</b>			
<b>Start Depth</b>	187.00 ft	<b>End Depth</b>	293.00 ft
<b>Contact Accuracy Penetration</b>			
<b>Primary Lithology</b>	Dolomite	<b>Percent</b>	100
<b>Secondary Lithology</b>		<b>Percent</b>	
<b>Tertiary Lithology</b>		<b>Percent</b>	
<b>Comments</b>			

## Water Production Information

<b>Date</b>	11/05/1963	<b>Start Time</b>	
<b>Aquifer</b>	Unknown		
<b>Static Water Level</b>	95.00 ft	<b>Yield</b>	280 gallons per minute
<b>Pumping Water Level</b>	124 ft	<b>Yield Method</b>	Unknown
<b>Measurement</b>	Unknown	<b>Pump Test</b>	No
<b>Pump Method</b>	Unknown	<b>Duration</b>	0 mins
<b>Comments</b>			

# Chip Storage Information

<b>Date</b>	03/02/1964	<b>Bin</b>	
<b>Storage</b>	TL5-427	<b>Number of Samples</b>	22
<b>Number of Boxes</b>	1	<b>Sample Gaps</b>	0-53,166-176,269-293
<b>Sample Intervals</b>	10	<b>Sample Bottom</b>	269 ft
<b>Sample Top</b>	53 ft	<b>Washed Bottom</b>	269 ft
<b>Washed Top</b>	53 ft		
<b>Duplicate Storage</b>			
<b>Comments</b>			

<https://www.iihr.uiowa.edu/igs/geosam/well/16174/general-information>