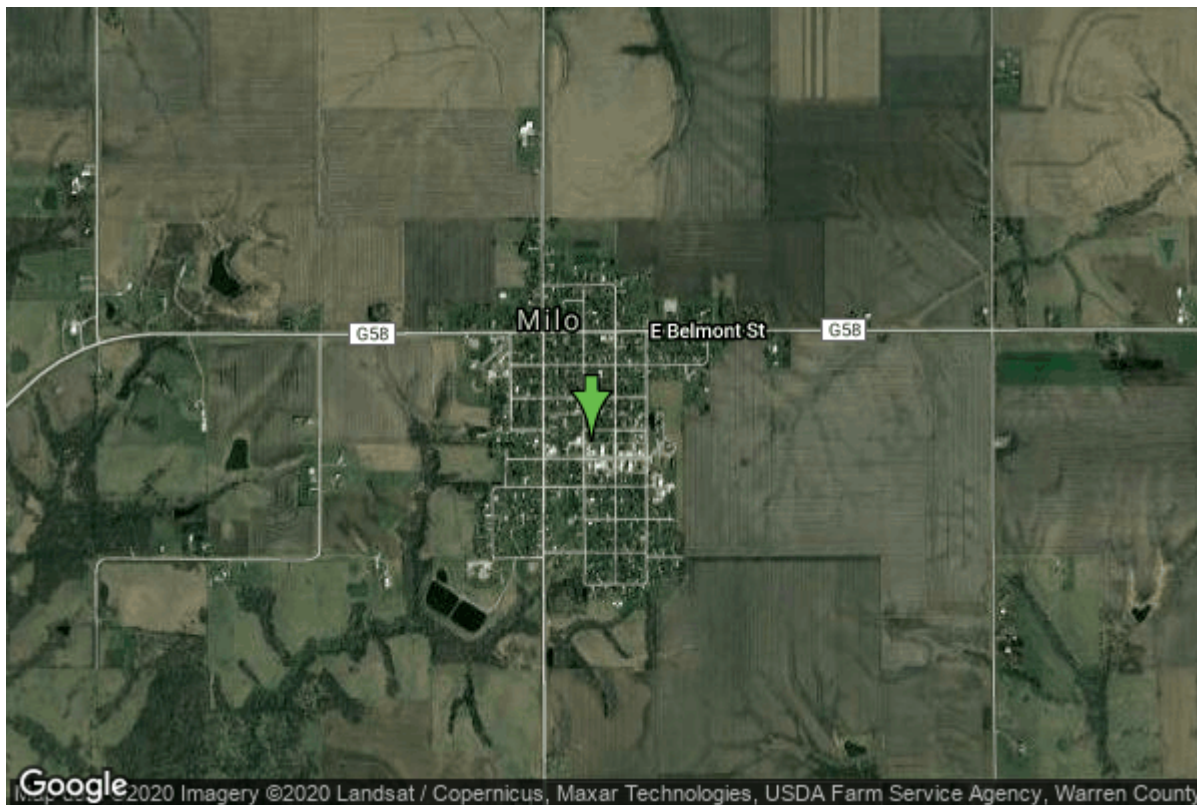


Well W#16207 Information



Date Received		State	Iowa
Owner Name	Milo, City Of	County	Warren
Alt Name	#4	Quadrangle	Milo, Iowa
WNumber	16207	Township	T75N
PWTS ID	0	Range	R22W
PWS ID	9155083	Section	19
Storet ID	0	Quarter	NW NW SE
SDWIS ID	2409869	Latitude	41.2877210000
USGS ID	0	Longitude	-93.4399000000
Project	Source Water Protection	Accuracy	
Operator	Unknown	UTM X	463165
		UTM Y	4570791

Site Type	Drilled hole	Drilling Company	Thorpe Well Co.
Well Status	Not Used	Drilling Date	07/17/1964
Field Located	No	Drilling Method	Cable
Elevation	967 ft	Bedrock Depth	0 ft
Elevation Accuracy	Digital Elevation Model Accurate to 5 ft	Well Depth	2550 ft
Landscape Position	Unknown	Total Depth	2550 ft
		Well Types	Municipal, Public Supply
		Aquifers	Cambrian-Ordovician

Log Information

Date	
Log Types	Unknown

Prepared By Unknown
Comments

Date
Log Types Strip log
Prepared By Unknown
Comments

Stratigraphy Information

System Quaternary
Series
Group
Formation
Member
Submember
Start Depth 0.00 ft End Depth 2.00 ft
Contact Accuracy
Penetration
Primary Lithology Soil Or Fill Percent 100
Secondary Lithology Percent
Tertiary Lithology Percent
Comments

System Quaternary
Series
Group
Formation
Member
Submember
Start Depth 2.00 ft End Depth 15.00 ft
Contact Accuracy
Penetration
Primary Lithology Loess Percent 100
Secondary Lithology Percent
Tertiary Lithology Percent
Comments

System Quaternary
Series Pleistocene Series
Group
Formation
Member
Submember
Start Depth 15.00 ft End Depth 38.00 ft
Contact Accuracy
Penetration
Primary Lithology Gumbotil Percent 0

Secondary Lithology	Till	Percent	0
Tertiary Lithology		Percent	
Comments			

System	Pennsylvanian (Subsystem Of Carboniferous System)		
Series			
Group			
Formation			
Member			
Submember			
Start Depth	38.00 ft	End Depth	410.00 ft
Contact Accuracy			
Penetration			
Primary Lithology	Shale	Percent	0
Secondary Lithology	Sandstone	Percent	0
Tertiary Lithology	Limestone	Percent	0
Comments			

System	Unknown		
Series			
Group			
Formation			
Member			
Submember			
Start Depth	410.00 ft	End Depth	515.00 ft
Contact Accuracy			
Penetration			
Primary Lithology	Dolomite	Percent	0
Secondary Lithology	Limestone	Percent	0
Tertiary Lithology	Chert/Chalcedony	Percent	0
Comments			

System	Mississippian (Subsystem Of Carboniferous System)		
Series			
Group	Augusta		
Formation	Warsaw		
Member			
Submember			
Start Depth	515.00 ft	End Depth	534.00 ft
Contact Accuracy			
Penetration			
Primary Lithology	Gypsum/Anhydrite	Percent	0
Secondary Lithology	Dolomite	Percent	0
Tertiary Lithology	Limestone	Percent	0
Comments			

System	Mississippian (Subsystem Of Carboniferous System)		
Series			
Group	Augusta		

Formation	Keokuk		
Member			
Submember			
Start Depth	534.00 ft	End Depth	648.00 ft
Contact Accuracy			
Penetration			
Primary Lithology	Dolomite	Percent	0
Secondary Lithology	Chert/Chalcedony	Percent	0
Tertiary Lithology	Gypsum/Anhydrite	Percent	0
Comments			

System	Mississippian (Subsystem Of Carboniferous System)		
Series			
Group	Augusta		
Formation	Burlington		
Member			
Submember			
Start Depth	648.00 ft	End Depth	733.00 ft
Contact Accuracy			
Penetration			
Primary Lithology	Dolomite	Percent	0
Secondary Lithology	Limestone	Percent	0
Tertiary Lithology	Shale	Percent	0
Comments			

System	Mississippian (Subsystem Of Carboniferous System)		
Series			
Group	Sub-Augusta		
Formation	Gilmore City		
Member	Iowa Falls Dolomite		
Submember			
Start Depth	733.00 ft	End Depth	743.00 ft
Contact Accuracy			
Penetration			
Primary Lithology	Dolomite	Percent	0
Secondary Lithology	Limestone	Percent	0
Tertiary Lithology		Percent	
Comments			

System	Mississippian (Subsystem Of Carboniferous System)		
Series			
Group	Sub-Augusta		
Formation	Maynes Creek		
Member	Eagle City		
Submember			
Start Depth	743.00 ft	End Depth	772.00 ft
Contact Accuracy			
Penetration			
Primary Lithology	Limestone	Percent	0

Secondary Lithology	Dolomite	Percent	0
Tertiary Lithology		Percent	
Comments			

System	Mississippian (Subsystem Of Carboniferous System)		
Series			
Group	Sub-Augusta		
Formation	Maynes Creek		
Member			
Submember			
Start Depth	772.00 ft	End Depth	843.00 ft
Contact Accuracy			
Penetration			
Primary Lithology	Dolomite	Percent	0
Secondary Lithology	Chert/Chalcedony	Percent	0
Tertiary Lithology	Limestone	Percent	0
Comments			

System	Mississippian (Subsystem Of Carboniferous System)		
Series			
Group	North Hill		
Formation			
Member			
Submember			
Start Depth	843.00 ft	End Depth	878.00 ft
Contact Accuracy			
Penetration			
Primary Lithology	Limestone	Percent	0
Secondary Lithology	Dolomite	Percent	0
Tertiary Lithology	Siltstone	Percent	0
Comments			

System	Mississippian (Subsystem Of Carboniferous System)		
Series			
Group	North Hill		
Formation	Prospect Hill		
Member			
Submember			
Start Depth	878.00 ft	End Depth	880.00 ft
Contact Accuracy			
Penetration			
Primary Lithology	Limestone	Percent	0
Secondary Lithology	Siltstone	Percent	0
Tertiary Lithology		Percent	
Comments			

System	Devonian		
Series			
Group	Yellow Spring (New Albany)		

Formation Member Submember	Maple Mill		
Start Depth	880.00 ft	End Depth	913.00 ft
Contact Accuracy Penetration			
Primary Lithology	Shale	Percent	0
Secondary Lithology	Limestone	Percent	0
Tertiary Lithology		Percent	
Comments			
<hr/>			
System Series	Devonian		
Group Formation Member Submember	Yellow Spring (New Albany) Lime Creek		
Start Depth	913.00 ft	End Depth	1019.00 ft
Contact Accuracy Penetration			
Primary Lithology	Limestone	Percent	0
Secondary Lithology	Shale	Percent	0
Tertiary Lithology	Dolomite	Percent	0
Comments			
<hr/>			
System Series	Unknown		
Group Formation Member Submember			
Start Depth	1019.00 ft	End Depth	1345.00 ft
Contact Accuracy Penetration			
Primary Lithology	Dolomite	Percent	0
Secondary Lithology	Chert/Chalcedony	Percent	0
Tertiary Lithology	Limestone	Percent	0
Comments			
<hr/>			
System Series	Devonian		
Group Formation Member Submember	Wapsipinicon		
Start Depth	1345.00 ft	End Depth	1450.00 ft
Contact Accuracy Penetration			
Primary Lithology	Dolomite	Percent	0

Secondary Lithology	Chert/Chalcedony	Percent	0
Tertiary Lithology	Shale	Percent	0
Comments			

System	Silurian		
Series			
Group			
Formation			
Member			
Submember			
Start Depth	1450.00 ft	End Depth	1485.00 ft
Contact Accuracy			
Penetration			
Primary Lithology	Chert/Chalcedony	Percent	0
Secondary Lithology	Dolomite	Percent	0
Tertiary Lithology	Sandstone	Percent	0
Comments			

System	Ordovician		
Series			
Group			
Formation	Maquoketa		
Member			
Submember			
Start Depth	1485.00 ft	End Depth	1575.00 ft
Contact Accuracy			
Penetration			
Primary Lithology	Shale	Percent	0
Secondary Lithology	Chert/Chalcedony	Percent	0
Tertiary Lithology	Dolomite	Percent	0
Comments			

System	Ordovician		
Series			
Group			
Formation	Maquoketa		
Member	Ft. Atkinson Limestone		
Submember			
Start Depth	1575.00 ft	End Depth	1605.00 ft
Contact Accuracy			
Penetration			
Primary Lithology	Chert/Chalcedony	Percent	0
Secondary Lithology	Dolomite	Percent	0
Tertiary Lithology		Percent	
Comments			

System	Ordovician		
Series			
Group			

Formation	Maquoketa		
Member	Clermont Shale		
Submember			
Start Depth	1605.00 ft	End Depth	1650.00 ft
Contact Accuracy			
Penetration			
Primary Lithology	Shale	Percent	0
Secondary Lithology	Dolomite	Percent	0
Tertiary Lithology		Percent	
Comments			

System	Ordovician		
Series			
Group			
Formation	Maquoketa		
Member	Elgin Limestone		
Submember			
Start Depth	1650.00 ft	End Depth	1742.00 ft
Contact Accuracy			
Penetration			
Primary Lithology	Chert/Chalcedony	Percent	0
Secondary Lithology	Dolomite	Percent	0
Tertiary Lithology		Percent	
Comments			

System	Unknown		
Series			
Group			
Formation			
Member			
Submember			
Start Depth	1742.00 ft	End Depth	1815.00 ft
Contact Accuracy			
Penetration			
Primary Lithology	Dolomite	Percent	0
Secondary Lithology	Chert/Chalcedony	Percent	0
Tertiary Lithology		Percent	
Comments			

System	Ordovician		
Series			
Group	Galena		
Formation	Dunleith		
Member			
Submember			
Start Depth	1815.00 ft	End Depth	1910.00 ft
Contact Accuracy			
Penetration			
Primary Lithology	Dolomite	Percent	0

Secondary Lithology	Chert/Chalcedony	Percent	0
Tertiary Lithology		Percent	
Comments			

System	Ordovician		
Series			
Group	Galena		
Formation	Decorah		
Member	Ion		
Submember			
Start Depth	1910.00 ft	End Depth	1920.00 ft
Contact Accuracy			
Penetration			
Primary Lithology	Dolomite	Percent	0
Secondary Lithology	Shale	Percent	0
Tertiary Lithology		Percent	
Comments			

System	Ordovician		
Series			
Group	Galena		
Formation	Decorah		
Member	Guttenberg		
Submember			
Start Depth	1920.00 ft	End Depth	1928.00 ft
Contact Accuracy			
Penetration			
Primary Lithology	Limestone	Percent	0
Secondary Lithology	Dolomite	Percent	0
Tertiary Lithology		Percent	
Comments			

System	Ordovician		
Series			
Group	Galena		
Formation	Decorah		
Member	Spechts Ferry		
Submember			
Start Depth	1928.00 ft	End Depth	1935.00 ft
Contact Accuracy			
Penetration			
Primary Lithology	Shale	Percent	0
Secondary Lithology	Limestone	Percent	0
Tertiary Lithology		Percent	
Comments			

System	Ordovician		
Series			
Group	Galena		

Formation	Platteville		
Member	Mcgregor		
Submember			
Start Depth	1935.00 ft	End Depth	1960.00 ft
Contact Accuracy			
Penetration			
Primary Lithology	Dolomite	Percent	0
Secondary Lithology	Sand	Percent	0
Tertiary Lithology		Percent	
Comments			

System	Ordovician		
Series			
Group	Ancell		
Formation	Glenwood		
Member	Harmony Hill		
Submember			
Start Depth	1960.00 ft	End Depth	1963.00 ft
Contact Accuracy			
Penetration			
Primary Lithology	Shale	Percent	100
Secondary Lithology		Percent	
Tertiary Lithology		Percent	
Comments			

System	Ordovician		
Series			
Group	Ancell		
Formation	St. Peter Sandstone		
Member			
Submember			
Start Depth	1963.00 ft	End Depth	1992.00 ft
Contact Accuracy			
Penetration			
Primary Lithology	Sandstone	Percent	100
Secondary Lithology		Percent	
Tertiary Lithology		Percent	
Comments			

System	Ordovician		
Series			
Group	Prairie Du Chien		
Formation	Shakopee		
Member	Willow River		
Submember			
Start Depth	1992.00 ft	End Depth	2273.00 ft
Contact Accuracy			
Penetration			
Primary Lithology	Sandstone	Percent	0

Secondary Lithology	Dolomite	Percent	0
Tertiary Lithology	Chert/Chalcedony	Percent	0
Comments			

System	Ordovician		
Series			
Group	Prairie Du Chien		
Formation	Oneota		
Member			
Submember			
Start Depth	2273.00 ft	End Depth	2450.00 ft
Contact Accuracy			
Penetration			
Primary Lithology	Dolomite	Percent	0
Secondary Lithology	Chert/Chalcedony	Percent	0
Tertiary Lithology		Percent	
Comments			

System	Cambrian		
Series			
Group			
Formation	Jordan		
Member			
Submember			
Start Depth	2450.00 ft	End Depth	2505.00 ft
Contact Accuracy			
Penetration			
Primary Lithology	Dolomite	Percent	0
Secondary Lithology	Sandstone	Percent	0
Tertiary Lithology	Sand And Gravel	Percent	0
Comments			

System	Cambrian		
Series			
Group			
Formation	St. Lawrence		
Member			
Submember			
Start Depth	2505.00 ft	End Depth	2550.00 ft
Contact Accuracy			
Penetration			
Primary Lithology	Dolomite	Percent	100
Secondary Lithology		Percent	
Tertiary Lithology		Percent	
Comments			

Water Production Information

Date	03/14/1964	Start Time	
Aquifer	Unknown		
Static Water Level	258.00 ft	Yield	300 gallons per minute
Pumping Water Level	0 ft	Yield Method	Unknown
Measurement	Unknown	Pump Test	No
Pump Method	Unknown	Duration	0 mins
Comments			

Chip Storage Information

Date	03/11/1964		
Storage	TL5-731->736	Bin	
Number of Boxes	6	Number of Samples	483
Sample Intervals	5	Sample Gaps	
Sample Top	0 ft	Sample Bottom	2550 ft
Washed Top	80 ft	Washed Bottom	2550 ft
Duplicate Storage			
Comments			

<https://www.iuhr.uiowa.edu/igs/geosam/well/16207/general-information>