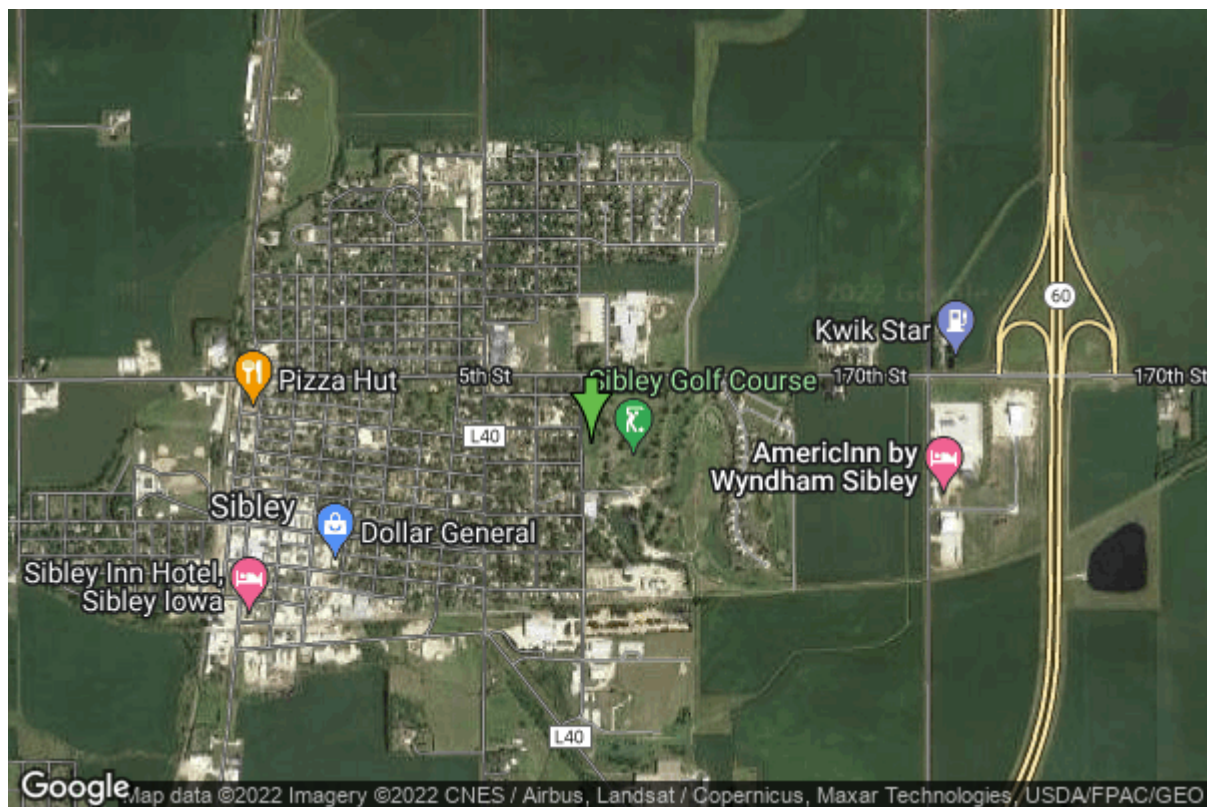


# Well W#1622 Information



<b>Date Received</b>		<b>State</b>	Iowa
<b>Owner Name</b>	Sibley, City Of	<b>County</b>	Osceola
<b>Alt Name</b>	EAST #2	<b>Quadrangle</b>	Sibley East, Iowa
<b>WNumber</b>	1622	<b>Township</b>	T99N
<b>PWTS ID</b>	0	<b>Range</b>	R41W
<b>PWS ID</b>	7245047	<b>Section</b>	18
<b>Storet ID</b>	0	<b>Quarter</b>	NW NE SW
<b>SDWIS ID</b>	0	<b>Latitude</b>	43.4019070000
<b>USGS ID</b>	0	<b>Longitude</b>	-95.7364490000
<b>Project</b>	Source Water Protection	<b>Accuracy</b>	
<b>Operator</b>	Unknown	<b>UTM X</b>	278411
		<b>UTM Y</b>	4809085

<b>Site Type</b>	Drilled hole	<b>Drilling Company</b>	Unknown
<b>Well Status</b>	Not Used	<b>Drilling Date</b>	07/01/1942
<b>Field Located</b>	No	<b>Drilling Method</b>	Unknown
<b>Elevation</b>	1519 ft	<b>Bedrock Depth</b>	0 ft
<b>Elevation Accuracy</b>	Digital Elevation Model	<b>Well Depth</b>	175 ft
	Accurate to 5 ft	<b>Total Depth</b>	205 ft
<b>Landscape Position</b>	Unknown	<b>Well Types</b>	Municipal
		<b>Aquifers</b>	Pleistocene

## Casing Construction Information

<b>Date</b>	07/01/1942	<b>Casing Type</b>	Steel
<b>Start Depth</b>	0.00 ft	<b>End Depth</b>	145.00 ft

<b>Diameter</b>	20.00 in	<b>Amount</b>	145.00 ft
<b>Comments</b>			

---

<b>Date</b>	07/01/1942	<b>Casing Type</b>	Steel
<b>Start Depth</b>	0.00 ft	<b>End Depth</b>	140.00 ft
<b>Diameter</b>	12.00 in	<b>Amount</b>	140.00 ft
<b>Comments</b>			

## Screen Construction Information

<b>Date</b>	07/01/1942		
<b>Screen Type</b>	Steel	<b>Slot Size</b>	0.00
<b>Start Depth</b>	140.00 ft	<b>End Depth</b>	175.00 ft
<b>Diameter</b>	12.00 in	<b>Amount</b>	35 ft
<b>Comments</b>			

---

<b>Date</b>	07/01/1942		
<b>Screen Type</b>	Steel	<b>Slot Size</b>	0.00
<b>Start Depth</b>	0.00 ft	<b>End Depth</b>	0.00 ft
<b>Diameter</b>	0.00 in	<b>Amount</b>	0 ft
<b>Comments</b>			

## Pump Construction Information

<b>Date</b>	07/01/1942	<b>Pump Type</b>	Turbine
<b>Diameter</b>	0.00 in	<b>Rating</b>	0
<b>Depth Intake</b>	145.00 ft		
<b>Comments</b>			

## Log Information

<b>Date</b>			
<b>Log Types</b>	Unknown		
<b>Prepared By</b>	Unknown		
<b>Comments</b>			

---

<b>Date</b>			
<b>Log Types</b>	Strip log		
<b>Prepared By</b>	Unknown		
<b>Comments</b>			

## Stratigraphy Information

<b>System</b>	Quaternary
<b>Series</b>	Pleistocene Series

<b>Group</b>	Wisconsinan Episode		
<b>Formation</b>	Sheldon Creek		
<b>Member</b>			
<b>Submember</b>			
<b>Start Depth</b>	0.00 ft	<b>End Depth</b>	15.00 ft
<b>Contact Accuracy</b>			
<b>Penetration</b>			
<b>Primary Lithology</b>	Till - Oxidized And Unleached	<b>Percent</b>	75
<b>Secondary Lithology</b>	Soil Or Fill	<b>Percent</b>	25
<b>Tertiary Lithology</b>	Unknown	<b>Percent</b>	0
<b>Comments</b>			

---

<b>System</b>	Quaternary		
<b>Series</b>	Pleistocene Series		
<b>Group</b>	Wisconsinan Episode		
<b>Formation</b>	Sheldon Creek		
<b>Member</b>			
<b>Submember</b>			
<b>Start Depth</b>	15.00 ft	<b>End Depth</b>	25.00 ft
<b>Contact Accuracy</b>			
<b>Penetration</b>			
<b>Primary Lithology</b>	Till - Unoxidized And Unleached	<b>Percent</b>	100
<b>Secondary Lithology</b>		<b>Percent</b>	
<b>Tertiary Lithology</b>		<b>Percent</b>	
<b>Comments</b>			

---

<b>System</b>	Quaternary		
<b>Series</b>	Pleistocene Series		
<b>Group</b>	Pre-Illinoian		
<b>Formation</b>			
<b>Member</b>			
<b>Submember</b>			
<b>Start Depth</b>	25.00 ft	<b>End Depth</b>	30.00 ft
<b>Contact Accuracy</b>			
<b>Penetration</b>			
<b>Primary Lithology</b>	Till - Unoxidized And Unleached	<b>Percent</b>	90
<b>Secondary Lithology</b>	Till - Oxidized And Unleached	<b>Percent</b>	10
<b>Tertiary Lithology</b>		<b>Percent</b>	
<b>Comments</b>			

---

<b>System</b>	Quaternary		
<b>Series</b>	Pleistocene Series		
<b>Group</b>	Pre-Illinoian		
<b>Formation</b>			
<b>Member</b>			

<b>Submember</b>			
<b>Start Depth</b>	30.00 ft	<b>End Depth</b>	35.00 ft
<b>Contact Accuracy</b>			
<b>Penetration</b>			
<b>Primary Lithology</b>	Till - Unoxidized And Unleached	<b>Percent</b>	100
<b>Secondary Lithology</b>		<b>Percent</b>	
<b>Tertiary Lithology</b>		<b>Percent</b>	
<b>Comments</b>			

<b>System</b>	Quaternary		
<b>Series</b>	Pleistocene Series		
<b>Group</b>	Pre-Illinoian		
<b>Formation</b>			
<b>Member</b>			
<b>Submember</b>			
<b>Start Depth</b>	35.00 ft	<b>End Depth</b>	45.00 ft
<b>Contact Accuracy</b>			
<b>Penetration</b>			
<b>Primary Lithology</b>	Till - Unoxidized And Unleached	<b>Percent</b>	80
<b>Secondary Lithology</b>	Till - Oxidized And Unleached	<b>Percent</b>	20
<b>Tertiary Lithology</b>	Unknown	<b>Percent</b>	0
<b>Comments</b>			

<b>System</b>	Quaternary		
<b>Series</b>	Pleistocene Series		
<b>Group</b>	Pre-Illinoian		
<b>Formation</b>			
<b>Member</b>			
<b>Submember</b>			
<b>Start Depth</b>	45.00 ft	<b>End Depth</b>	50.00 ft
<b>Contact Accuracy</b>			
<b>Penetration</b>			
<b>Primary Lithology</b>	Till - Unoxidized And Unleached	<b>Percent</b>	100
<b>Secondary Lithology</b>		<b>Percent</b>	
<b>Tertiary Lithology</b>		<b>Percent</b>	
<b>Comments</b>			

<b>System</b>	Quaternary		
<b>Series</b>	Pleistocene Series		
<b>Group</b>	Pre-Illinoian		
<b>Formation</b>			
<b>Member</b>			
<b>Submember</b>			
<b>Start Depth</b>	50.00 ft	<b>End Depth</b>	55.00 ft
<b>Contact Accuracy</b>			

<b>Penetration</b>			
<b>Primary Lithology</b>	Till - Unoxidized And Unleached	<b>Percent</b>	90
<b>Secondary Lithology</b>	Till - Oxidized And Unleached	<b>Percent</b>	10
<b>Tertiary Lithology</b>		<b>Percent</b>	
<b>Comments</b>			
<b>System</b>	Quaternary		
<b>Series</b>	Pleistocene Series		
<b>Group</b>	Pre-Illinoian		
<b>Formation</b>			
<b>Member</b>			
<b>Submember</b>			
<b>Start Depth</b>	55.00 ft	<b>End Depth</b>	100.00 ft
<b>Contact Accuracy</b>			
<b>Penetration</b>			
<b>Primary Lithology</b>	Till - Unoxidized And Unleached	<b>Percent</b>	100
<b>Secondary Lithology</b>		<b>Percent</b>	
<b>Tertiary Lithology</b>		<b>Percent</b>	
<b>Comments</b>			
<b>System</b>	Quaternary		
<b>Series</b>	Pleistocene Series		
<b>Group</b>	Pre-Illinoian		
<b>Formation</b>			
<b>Member</b>			
<b>Submember</b>			
<b>Start Depth</b>	100.00 ft	<b>End Depth</b>	115.00 ft
<b>Contact Accuracy</b>			
<b>Penetration</b>			
<b>Primary Lithology</b>	Sand And Gravel	<b>Percent</b>	100
<b>Secondary Lithology</b>		<b>Percent</b>	
<b>Tertiary Lithology</b>		<b>Percent</b>	
<b>Comments</b>			
<b>System</b>	Quaternary		
<b>Series</b>	Pleistocene Series		
<b>Group</b>	Pre-Illinoian		
<b>Formation</b>			
<b>Member</b>			
<b>Submember</b>			
<b>Start Depth</b>	115.00 ft	<b>End Depth</b>	120.00 ft
<b>Contact Accuracy</b>			
<b>Penetration</b>			
<b>Primary Lithology</b>	Till - Unoxidized And Unleached	<b>Percent</b>	100
<b>Secondary Lithology</b>		<b>Percent</b>	

Tertiary Lithology		Percent	
Comments			
<b>System</b>	Quaternary		
<b>Series</b>	Pleistocene Series		
<b>Group</b>	Pre-Illinoian		
<b>Formation</b>			
<b>Member</b>			
<b>Submember</b>			
<b>Start Depth</b>	120.00 ft	<b>End Depth</b>	130.00 ft
<b>Contact Accuracy</b>			
<b>Penetration</b>			
<b>Primary Lithology</b>	Sand And Gravel	<b>Percent</b>	100
<b>Secondary Lithology</b>		<b>Percent</b>	
<b>Tertiary Lithology</b>		<b>Percent</b>	
<b>Comments</b>			
<b>System</b>	Quaternary		
<b>Series</b>	Pleistocene Series		
<b>Group</b>	Pre-Illinoian		
<b>Formation</b>			
<b>Member</b>			
<b>Submember</b>			
<b>Start Depth</b>	130.00 ft	<b>End Depth</b>	150.00 ft
<b>Contact Accuracy</b>			
<b>Penetration</b>			
<b>Primary Lithology</b>	Till - Unoxidized And Unleached	<b>Percent</b>	100
<b>Secondary Lithology</b>		<b>Percent</b>	
<b>Tertiary Lithology</b>		<b>Percent</b>	
<b>Comments</b>			
<b>System</b>	Quaternary		
<b>Series</b>	Pleistocene Series		
<b>Group</b>	Pre-Illinoian		
<b>Formation</b>			
<b>Member</b>			
<b>Submember</b>			
<b>Start Depth</b>	150.00 ft	<b>End Depth</b>	155.00 ft
<b>Contact Accuracy</b>			
<b>Penetration</b>			
<b>Primary Lithology</b>	Paleosol	<b>Percent</b>	100
<b>Secondary Lithology</b>	Unknown	<b>Percent</b>	0
<b>Tertiary Lithology</b>	Unknown	<b>Percent</b>	0
<b>Comments</b>			
<b>System</b>	Quaternary		
<b>Series</b>	Pleistocene Series		
<b>Group</b>	Pre-Illinoian		

**Formation**  
**Member**  
**Submember**  
**Start Depth** 155.00 ft **End Depth** 160.00 ft  
**Contact Accuracy**  
**Penetration**  
**Primary Lithology** Sand And Gravel **Percent** 100  
**Secondary Lithology** **Percent**  
**Tertiary Lithology** **Percent**  
**Comments**

---

**System** Quaternary  
**Series** Pleistocene Series  
**Group** Pre-Illinoian  
**Formation**  
**Member**  
**Submember**  
**Start Depth** 160.00 ft **End Depth** 165.00 ft  
**Contact Accuracy**  
**Penetration**  
**Primary Lithology** Till - Unoxidized And Unleached **Percent** 100  
**Secondary Lithology** **Percent**  
**Tertiary Lithology** **Percent**  
**Comments**

---

**System** Quaternary  
**Series** Pleistocene Series  
**Group** Pre-Illinoian  
**Formation**  
**Member**  
**Submember**  
**Start Depth** 165.00 ft **End Depth** 175.00 ft  
**Contact Accuracy**  
**Penetration**  
**Primary Lithology** Sand And Gravel **Percent** 100  
**Secondary Lithology** **Percent**  
**Tertiary Lithology** **Percent**  
**Comments**

---

**System** Quaternary  
**Series** Pleistocene Series  
**Group** Pre-Illinoian  
**Formation**  
**Member**  
**Submember**  
**Start Depth** 175.00 ft **End Depth** 205.00 ft  
**Contact Accuracy**  
**Penetration**

<b>Primary Lithology</b>	Till - Unoxidized And Unleached	<b>Percent</b>	100
<b>Secondary Lithology</b>		<b>Percent</b>	
<b>Tertiary Lithology</b>		<b>Percent</b>	
<b>Comments</b>			

## Water Production Information

<b>Date</b>	07/01/1942	<b>Start Time</b>	
<b>Aquifer</b>	Unknown		
<b>Static Water Level</b>	52.00 ft	<b>Yield</b>	100 gallons per minute
<b>Pumping Water Level</b>	70 ft	<b>Yield Method</b>	Unknown
<b>Measurement</b>	Unknown	<b>Pump Test</b>	Yes
<b>Pump Method</b>	Unknown	<b>Duration</b>	0 mins
<b>Comments</b>			

## Chip Storage Information

<b>Date</b>		<b>Bin</b>	
<b>Storage</b>	WJ8-1	<b>Number of Samples</b>	41
<b>Number of Boxes</b>	1	<b>Sample Gaps</b>	
<b>Sample Intervals</b>	0	<b>Sample Bottom</b>	205 ft
<b>Sample Top</b>	0 ft	<b>Washed Bottom</b>	0 ft
<b>Washed Top</b>	0 ft		
<b>Duplicate Storage</b>			
<b>Comments</b>			

<https://www.iihr.uiowa.edu/igs/geosam/well/1622/general-information>