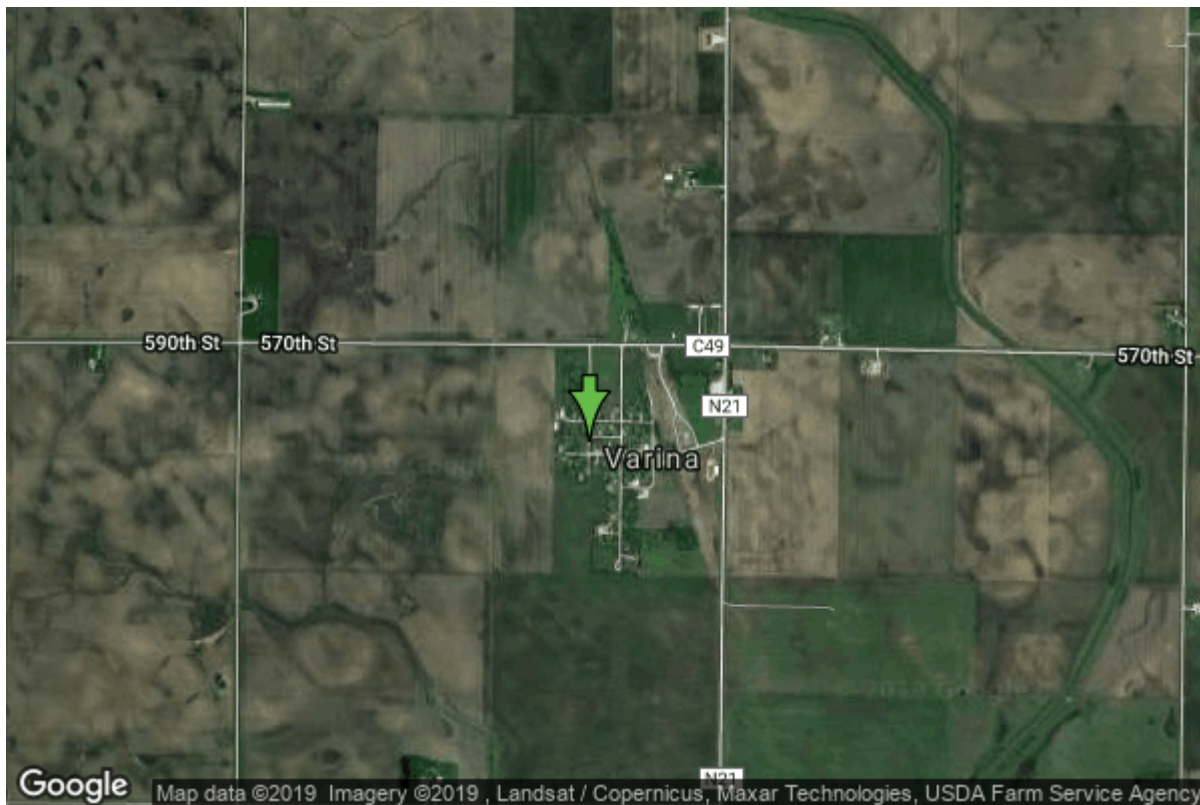


# Well W#16401 Information



<b>Date Received</b>		<b>State</b>	Iowa
<b>Owner Name</b>	Varina, City Of	<b>County</b>	Pocahontas
<b>Alt Name</b>	#3	<b>Quadrangle</b>	Varina, Iowa
<b>WNumber</b>	16401	<b>Township</b>	T91N
<b>PWTS ID</b>	0	<b>Range</b>	R34W
<b>PWS ID</b>	7642047	<b>Section</b>	31
<b>Storet ID</b>	0	<b>Quarter</b>	NE NE SW
<b>SDWIS ID</b>	2412329	<b>Latitude</b>	42.6584900000
<b>USGS ID</b>	0	<b>Longitude</b>	-94.8997700000
<b>Project</b>	Source Water Protection	<b>Accuracy</b>	
<b>Operator</b>	Unknown	<b>UTM X</b>	344296
		<b>UTM Y</b>	4724641

<b>Site Type</b>	Drilled hole	<b>Drilling Company</b>	Merkley Well Co.
<b>Well Status</b>	Active	<b>Drilling Date</b>	12/30/1963
<b>Field Located</b>	No	<b>Drilling Method</b>	Rotary
<b>Elevation</b>	1262 ft	<b>Bedrock Depth</b>	0 ft
<b>Elevation Accuracy</b>	Digital Elevation Model Accurate to 5 ft	<b>Well Depth</b>	314 ft
<b>Landscape Position</b>	Upland	<b>Total Depth</b>	314 ft
		<b>Well Types</b>	Municipal, Public Supply
		<b>Aquifers</b>	Pleistocene

## Casing Construction Information

<b>Date</b>	12/30/1963	<b>Casing Type</b>	Steel
<b>Start Depth</b>	0.00 ft	<b>End Depth</b>	304.00 ft

<b>Diameter</b>	6.00 in	<b>Amount</b>	0.00 ft
<b>Comments</b>			
<b>Date</b>	12/30/1963	<b>Casing Type</b>	Steel
<b>Start Depth</b>	307.00 ft	<b>End Depth</b>	314.00 ft
<b>Diameter</b>	6.00 in	<b>Amount</b>	7.00 ft
<b>Comments</b>			
<b>Date</b>	12/30/1963	<b>Casing Type</b>	Perforated Steel
<b>Start Depth</b>	304.00 ft	<b>End Depth</b>	307.00 ft
<b>Diameter</b>	6.00 in	<b>Amount</b>	3.00 ft
<b>Comments</b>			
<b>Date</b>	12/30/1963	<b>Casing Type</b>	Perforated Steel
<b>Start Depth</b>	0.00 ft	<b>End Depth</b>	0.00 ft
<b>Diameter</b>	0.00 in	<b>Amount</b>	0.00 ft
<b>Comments</b>			

## Grout Construction Information

<b>Date</b>	12/30/1963	<b>Grout Type</b>	Cement	<b>Grout Placement</b>	Unknown
<b>Start Depth</b>	0.00 ft	<b>End Depth</b>			20.00 ft
<b>Comments</b>					

## Log Information

<b>Date</b>	09/28/1966	<b>Log Types</b>	Strip log
<b>Prepared By</b>	Unknown	<b>Comments</b>	
<b>Date</b>		<b>Log Types</b>	Drillers log
<b>Prepared By</b>	Varina, City Of	<b>Comments</b>	

## Stratigraphy Information

<b>System</b>	Quaternary	<b>Series</b>	Pleistocene Series
<b>Group</b>	Wisconsinan Episode	<b>Formation</b>	Dows
<b>Member</b>		<b>Submember</b>	
<b>Start Depth</b>	0.00 ft	<b>End Depth</b>	15.00 ft

<b>Contact Accuracy Penetration</b>			
<b>Primary Lithology</b>	Till - Oxidized And Unleached	<b>Percent</b>	100
<b>Secondary Lithology</b>	Unknown	<b>Percent</b>	0
<b>Tertiary Lithology</b>	Unknown	<b>Percent</b>	0
<b>Comments</b>			
<b>System</b>	Quaternary		
<b>Series</b>	Pleistocene Series		
<b>Group</b>	Wisconsinan Episode		
<b>Formation</b>	Dows		
<b>Member</b>			
<b>Submember</b>			
<b>Start Depth</b>	15.00 ft	<b>End Depth</b>	145.00 ft
<b>Contact Accuracy Penetration</b>			
<b>Primary Lithology</b>	Till - Unoxidized And Unleached	<b>Percent</b>	100
<b>Secondary Lithology</b>		<b>Percent</b>	
<b>Tertiary Lithology</b>		<b>Percent</b>	
<b>Comments</b>			
<b>System</b>	Quaternary		
<b>Series</b>	Pleistocene Series		
<b>Group</b>	Wisconsinan Episode		
<b>Formation</b>	Dows		
<b>Member</b>			
<b>Submember</b>			
<b>Start Depth</b>	145.00 ft	<b>End Depth</b>	146.00 ft
<b>Contact Accuracy Penetration</b>			
<b>Primary Lithology</b>	Sand And Gravel	<b>Percent</b>	100
<b>Secondary Lithology</b>		<b>Percent</b>	
<b>Tertiary Lithology</b>		<b>Percent</b>	
<b>Comments</b>			
<b>System</b>	Quaternary		
<b>Series</b>	Pleistocene Series		
<b>Group</b>			
<b>Formation</b>			
<b>Member</b>			
<b>Submember</b>			
<b>Start Depth</b>	146.00 ft	<b>End Depth</b>	160.00 ft
<b>Contact Accuracy Penetration</b>			
<b>Primary Lithology</b>	Till - Unoxidized And Unleached	<b>Percent</b>	100
<b>Secondary Lithology</b>		<b>Percent</b>	

Tertiary Lithology		Percent	
Comments			
<b>System</b>	Quaternary		
<b>Series</b>	Pleistocene Series		
<b>Group</b>			
<b>Formation</b>			
<b>Member</b>			
<b>Submember</b>			
<b>Start Depth</b>	160.00 ft	<b>End Depth</b>	180.00 ft
<b>Contact Accuracy</b>			
<b>Penetration</b>			
<b>Primary Lithology</b>	Till - Oxidized And Unleached	<b>Percent</b>	100
<b>Secondary Lithology</b>	Unknown	<b>Percent</b>	0
<b>Tertiary Lithology</b>	Unknown	<b>Percent</b>	0
<b>Comments</b>			
<b>System</b>	Quaternary		
<b>Series</b>	Pleistocene Series		
<b>Group</b>			
<b>Formation</b>			
<b>Member</b>			
<b>Submember</b>			
<b>Start Depth</b>	180.00 ft	<b>End Depth</b>	190.00 ft
<b>Contact Accuracy</b>			
<b>Penetration</b>			
<b>Primary Lithology</b>	Till - Oxidized And Unleached	<b>Percent</b>	60
<b>Secondary Lithology</b>	Till - Unoxidized And Unleached	<b>Percent</b>	40
<b>Tertiary Lithology</b>		<b>Percent</b>	
<b>Comments</b>			
<b>System</b>	Quaternary		
<b>Series</b>	Pleistocene Series		
<b>Group</b>			
<b>Formation</b>			
<b>Member</b>			
<b>Submember</b>			
<b>Start Depth</b>	190.00 ft	<b>End Depth</b>	300.00 ft
<b>Contact Accuracy</b>			
<b>Penetration</b>			
<b>Primary Lithology</b>	Till - Unoxidized And Unleached	<b>Percent</b>	100
<b>Secondary Lithology</b>		<b>Percent</b>	
<b>Tertiary Lithology</b>		<b>Percent</b>	
<b>Comments</b>			

---

<b>System</b>	Quaternary		
<b>Series</b>	Pleistocene Series		
<b>Group</b>			
<b>Formation</b>			
<b>Member</b>			
<b>Submember</b>			
<b>Start Depth</b>	300.00 ft	<b>End Depth</b>	310.00 ft
<b>Contact Accuracy</b>			
<b>Penetration</b>			
<b>Primary Lithology</b>	Sand And Gravel	<b>Percent</b>	50
<b>Secondary Lithology</b>	Silt	<b>Percent</b>	50
<b>Tertiary Lithology</b>		<b>Percent</b>	
<b>Comments</b>			

---

<b>System</b>	Mississippian (Subsystem Of Carboniferous System)		
<b>Series</b>			
<b>Group</b>			
<b>Formation</b>	St. Louis		
<b>Member</b>			
<b>Submember</b>			
<b>Start Depth</b>	310.00 ft	<b>End Depth</b>	314.00 ft
<b>Contact Accuracy</b>			
<b>Penetration</b>			
<b>Primary Lithology</b>	Dolomite	<b>Percent</b>	100
<b>Secondary Lithology</b>		<b>Percent</b>	
<b>Tertiary Lithology</b>		<b>Percent</b>	
<b>Comments</b>			

## Water Production Information

<b>Date</b>	12/30/1963	<b>Start Time</b>	
<b>Aquifer</b>	Unknown		
<b>Static Water Level</b>	72.00 ft	<b>Yield</b>	50 gallons per minute
<b>Pumping Water Level</b>	90 ft	<b>Yield Method</b>	Unknown
<b>Measurement</b>	Unknown	<b>Pump Test</b>	No
<b>Pump Method</b>	Unknown	<b>Duration</b>	0 mins
<b>Comments</b>			

## Chip Storage Information

<b>Date</b>	05/13/1964		
<b>Storage</b>	TL5-507	<b>Bin</b>	
<b>Number of Boxes</b>	1	<b>Number of Samples</b>	65
<b>Sample Intervals</b>	5	<b>Sample Gaps</b>	
<b>Sample Top</b>	0 ft	<b>Sample Bottom</b>	314 ft
<b>Washed Top</b>	307 ft	<b>Washed Bottom</b>	314 ft

**Duplicate Storage  
Comments**

<https://www.ihr.uiowa.edu/igs/geosam/well/16401/general-information>