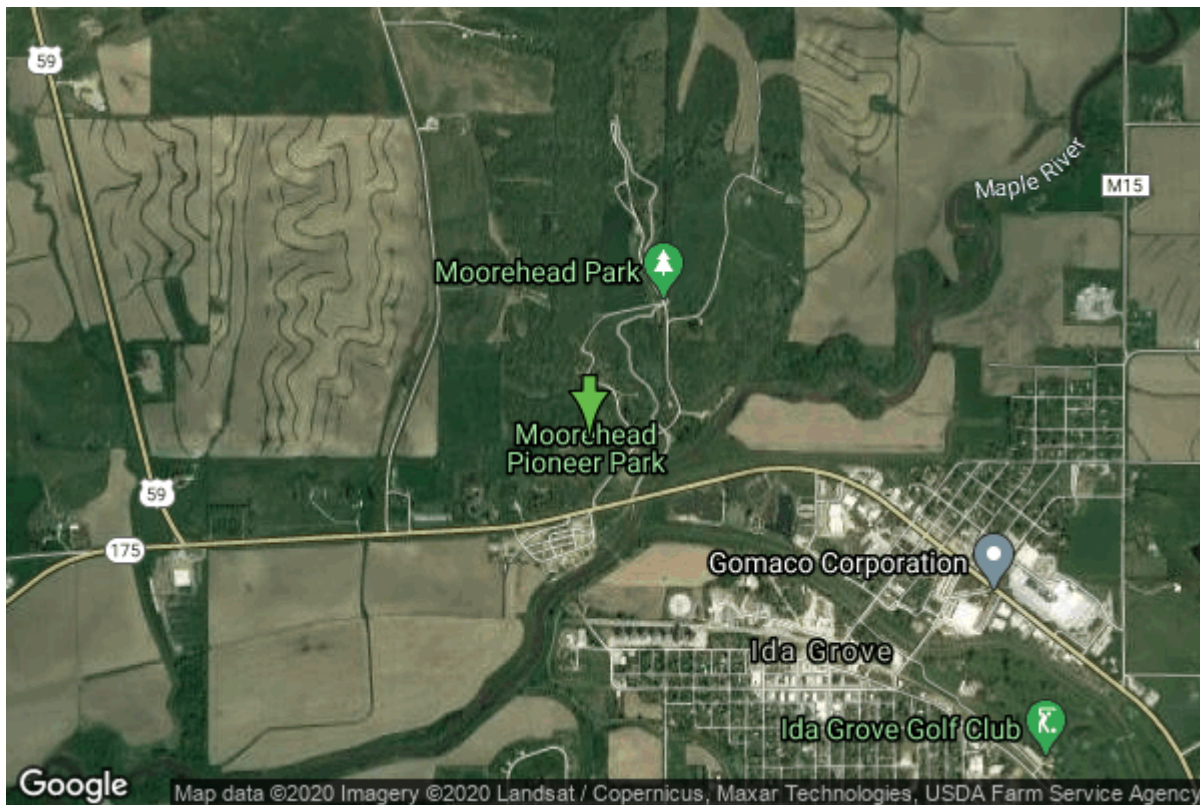


Well W#17023 Information



Date Received		State	Iowa
Owner Name	Moorehead Park	County	Ida
Alt Name	RECREATION COMMISSION	Quadrangle	Ida Grove, Iowa
WNumber	17023	Township	T87N
PWTS ID	0	Range	R40W
PWS ID	4728598	Section	15
Storet ID	0	Quarter	NE NE SW
SDWIS ID	2407194	Latitude	42.3529100000
USGS ID	0	Longitude	-95.4808390000
Project	Source Water Protection	Accuracy	
Operator	Unknown	UTM X	295676
		UTM Y	4691942

Site Type	Drilled hole	Drilling Company	Rasmussen, Carrol
Well Status	Not Used	Drilling Date	01/01/1964
Field Located	Yes	Drilling Method	Unknown
Elevation	1295 ft	Bedrock Depth	210 ft
Elevation Accuracy	Digital Elevation Model Accurate to 5 ft	Well Depth	270 ft
Landscape Position	Unknown	Total Depth	270 ft
		Well Types	Public Supply
		Aquifers	Dakota/Cretaceous

Casing Construction Information

Date	01/01/1960	Casing Type	Unknown
Start Depth	0.00 ft	End Depth	0.00 ft

Diameter	5.00 in	Amount	0.00 ft
Comments			

Log Information

Date	10/30/1969
Log Types	Strip log
Prepared By	Unknown
Comments	

Date	
Log Types	Drillers log
Prepared By	Moorehead Park
Comments	

Stratigraphy Information

System	Quaternary		
Series	Holocene Series		
Group			
Formation	Deforest		
Member			
Submember			
Start Depth	0.00 ft	End Depth	15.00 ft
Contact Accuracy			
Penetration			
Primary Lithology	Silt	Percent	100
Secondary Lithology	Unknown	Percent	0
Tertiary Lithology	Unknown	Percent	0
Comments			

System	Quaternary		
Series	Holocene Series		
Group			
Formation	Deforest		
Member			
Submember			
Start Depth	15.00 ft	End Depth	30.00 ft
Contact Accuracy			
Penetration			
Primary Lithology	Clay	Percent	100
Secondary Lithology	Unknown	Percent	0
Tertiary Lithology	Unknown	Percent	0
Comments			

System	Quaternary
Series	Holocene Series

Group			
Formation	Deforest		
Member			
Submember			
Start Depth	30.00 ft	End Depth	45.00 ft
Contact Accuracy			
Penetration			
Primary Lithology	Silt	Percent	100
Secondary Lithology		Percent	
Tertiary Lithology		Percent	
Comments			

System	Quaternary		
Series	Pleistocene Series		
Group	Wisconsinan Episode		
Formation	Noah Creek		
Member			
Submember			
Start Depth	45.00 ft	End Depth	55.00 ft
Contact Accuracy			
Penetration			
Primary Lithology	Sand And Gravel	Percent	100
Secondary Lithology	Unknown	Percent	0
Tertiary Lithology	Unknown	Percent	0
Comments			

System	Quaternary		
Series			
Group			
Formation			
Member			
Submember			
Start Depth	55.00 ft	End Depth	100.00 ft
Contact Accuracy			
Penetration			
Primary Lithology	Clay	Percent	100
Secondary Lithology	Unknown	Percent	0
Tertiary Lithology	Unknown	Percent	0
Comments			

System	Quaternary		
Series			
Group			
Formation			
Member			
Submember			
Start Depth	100.00 ft	End Depth	165.00 ft
Contact Accuracy			
Penetration			

Primary Lithology	Clay	Percent	0
Secondary Lithology	Silt	Percent	0
Tertiary Lithology		Percent	
Comments			

System	Tertiary		
Series			
Group			
Formation	Salt & Pepper Sands		
Member			
Submember			
Start Depth	165.00 ft	End Depth	210.00 ft
Contact Accuracy			
Penetration			
Primary Lithology	Sand	Percent	100
Secondary Lithology	Clay	Percent	0
Tertiary Lithology	Unknown	Percent	0
Comments			

System	Cretaceous		
Series			
Group	Fort Benton ("Lower Colorado ")		
Formation	Dakota		
Member			
Submember			
Start Depth	210.00 ft	End Depth	270.00 ft
Contact Accuracy			
Penetration			
Primary Lithology	Sandstone	Percent	0
Secondary Lithology	Shale	Percent	0
Tertiary Lithology		Percent	
Comments			

Water Production Information

Date	01/01/1964	Start Time	
Aquifer	Unknown		
Static Water Level	165.00 ft	Yield	20 gallons per minute
Pumping Water Level	0 ft	Yield Method	Unknown
Measurement	Unknown	Pump Test	Yes
Pump Method	Unknown	Duration	0 mins
Comments			

Chip Storage Information

Date	10/28/1964	
Storage	PL5-908	Bin

Number of Boxes	1	Number of Samples	54
Sample Intervals	5	Sample Gaps	235-240,265-270
Sample Top	0 ft	Sample Bottom	265 ft
Washed Top	243 ft	Washed Bottom	265 ft
Duplicate Storage			
Comments			

<https://www.iihr.uiowa.edu/igs/geosam/well/17023/general-information>