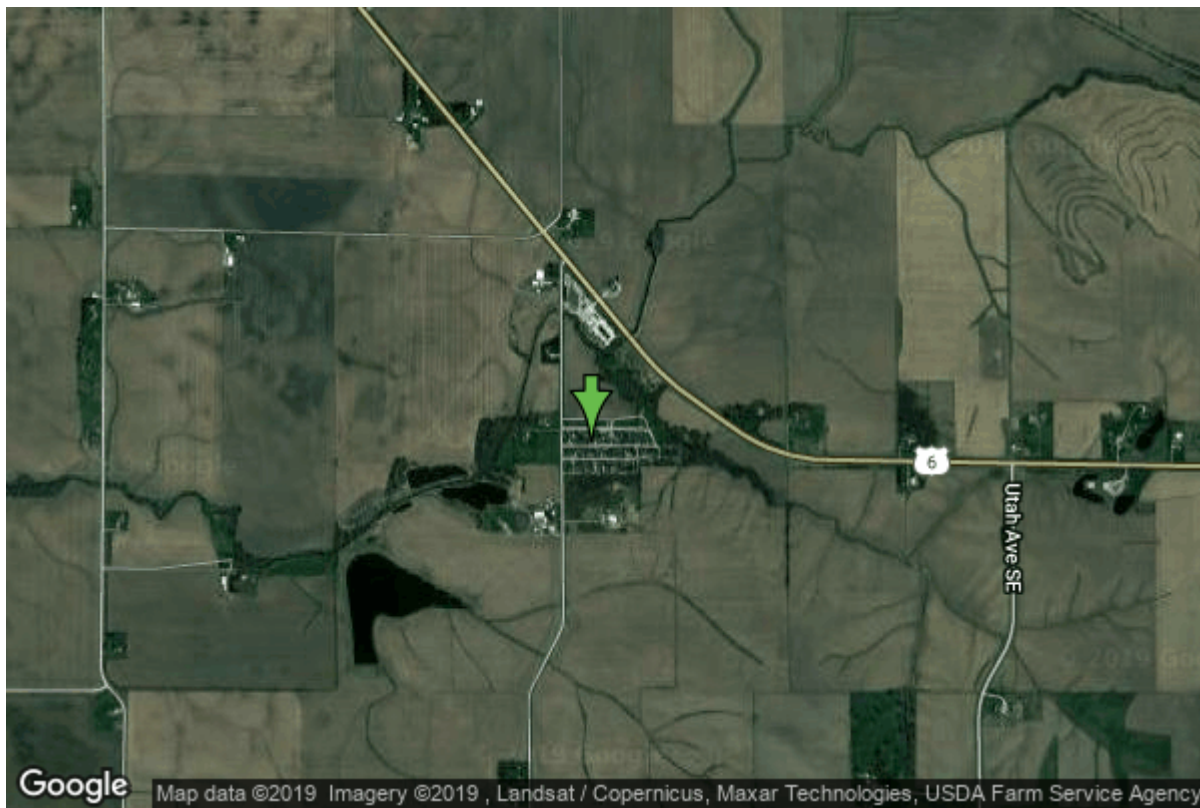


Well W#17312 Information



Date Received		State	Iowa
Owner Name	Breckenridge Estates	County	Johnson
Alt Name	OFFICE/NORTH WELL	Quadrangle	West Liberty Sw, Iowa
WNumber	17312	Township	T79N
PWTS ID	0	Range	R5W
PWS ID	5200601	Section	32
Storet ID	0	Quarter	NW SW SW
SDWIS ID	2407244	Latitude	41.6065380000
USGS ID	413616091274201	Longitude	-91.4613180000
Project	Source Water Protection	Accuracy	
Operator	Unknown	UTM X	628214
		UTM Y	4607235

Site Type	Drilled hole	Drilling Company	Edwards Inc., D.E.
Well Status	Active	Drilling Date	08/31/1964
Field Located	No	Drilling Method	Unknown
Elevation	691 ft	Bedrock Depth	169 ft
Elevation Accuracy	Digital Elevation Model Accurate to 5 ft	Well Depth	378 ft
Landscape Position	Hillside	Total Depth	378 ft
		Well Types	Public Supply, Subdivision
		Aquifers	Silurian

Casing Construction Information

Date	08/31/1964	Casing Type	Unknown
Start Depth	0.00 ft	End Depth	0.00 ft
Diameter	5.00 in	Amount	190.00 ft
Comments			

Log Information

Date	11/22/1965
Log Types	Strip log
Prepared By	Unknown
Comments	

Date	
Log Types	Drillers log
Prepared By	Breckenridge Estates
Comments	

Stratigraphy Information

System	Quaternary		
Series			
Group			
Formation			
Member			
Submember			
Start Depth	0.00 ft	End Depth	17.00 ft
Contact Accuracy			
Penetration			
Primary Lithology	Loess	Percent	100
Secondary Lithology		Percent	
Tertiary Lithology		Percent	
Comments			

System	Quaternary		
Series	Pleistocene Series		
Group			
Formation			
Member			
Submember			
Start Depth	17.00 ft	End Depth	169.00 ft
Contact Accuracy			
Penetration			
Primary Lithology	Till	Percent	0
Secondary Lithology	Sand And Gravel	Percent	0

Tertiary Lithology		Percent	
Comments			
System	Devonian		
Series			
Group	Cedar Valley		
Formation	Little Cedar		
Member	Rapid		
Submember			
Start Depth	169.00 ft	End Depth	229.00 ft
Contact Accuracy			
Penetration			
Primary Lithology	Limestone	Percent	100
Secondary Lithology		Percent	
Tertiary Lithology		Percent	
Comments			
System	Devonian		
Series			
Group	Cedar Valley		
Formation	Little Cedar		
Member	Solon		
Submember			
Start Depth	229.00 ft	End Depth	291.00 ft
Contact Accuracy			
Penetration			
Primary Lithology	Limestone	Percent	0
Secondary Lithology	Dolomite	Percent	0
Tertiary Lithology		Percent	
Comments			
System	Devonian		
Series			
Group	Wapsipinicon		
Formation	Pinicon Ridge		
Member	Davenport		
Submember			
Start Depth	291.00 ft	End Depth	309.00 ft
Contact Accuracy			
Penetration			
Primary Lithology	Limestone	Percent	100
Secondary Lithology		Percent	
Tertiary Lithology		Percent	
Comments			
System	Devonian		
Series			
Group	Wapsipinicon		
Formation	Pinicon Ridge		

Member	Spring Grove		
Submember			
Start Depth	309.00 ft	End Depth	325.00 ft
Contact Accuracy Penetration			
Primary Lithology	Dolomite	Percent	100
Secondary Lithology		Percent	
Tertiary Lithology		Percent	
Comments			

System	Devonian		
Series			
Group	Wapsipinicon		
Formation	Pinicon Ridge		
Member	Kenwood		
Submember			
Start Depth	325.00 ft	End Depth	337.00 ft
Contact Accuracy Penetration			
Primary Lithology	Dolomite	Percent	100
Secondary Lithology		Percent	
Tertiary Lithology		Percent	
Comments			

System	Silurian		
Series			
Group			
Formation			
Member			
Submember			
Start Depth	337.00 ft	End Depth	378.00 ft
Contact Accuracy Penetration			
Primary Lithology	Dolomite	Percent	100
Secondary Lithology	Unknown	Percent	0
Tertiary Lithology	Unknown	Percent	0
Comments			

Water Production Information

Date	08/31/1964	Start Time	
Aquifer	Unknown		
Static Water Level	47.00 ft	Yield	100 gallons per minute
Pumping Water Level	65 ft	Yield Method	Unknown
Measurement	Unknown	Pump Test	No
Pump Method	Unknown	Duration	0 mins
Comments			

Chip Storage Information

Date	03/12/1965	Bin	
Storage	PL6-31	Number of Samples	18
Number of Boxes	1	Sample Gaps	0-190,362-378
Sample Intervals	10	Sample Bottom	362 ft
Sample Top	190 ft	Washed Bottom	362 ft
Washed Top	190 ft		
Duplicate Storage			
Comments			

<https://www.iihr.uiowa.edu/igs/geosam/well/17312/general-information>