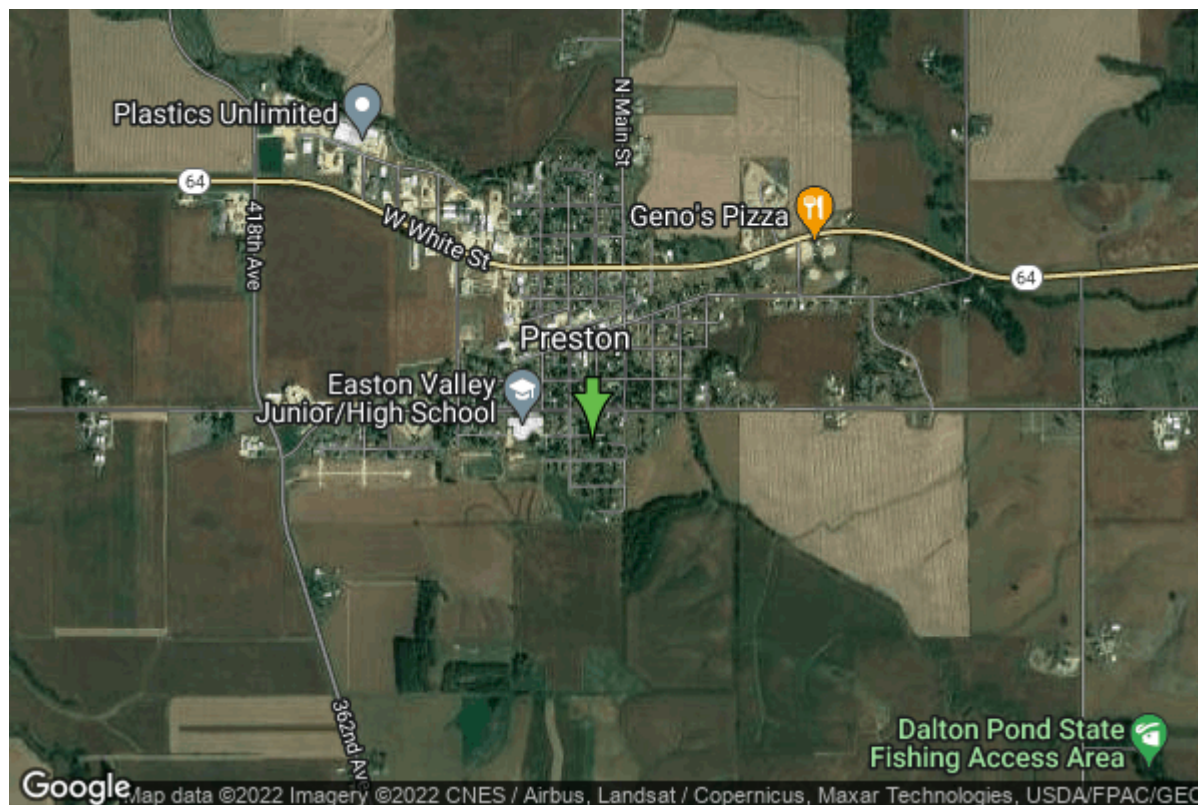


Well W#17615 Information



Date Received		State	Iowa
Owner Name	Preston, City Of	County	Jackson
Alt Name	#2	Quadrangle	Preston, Iowa
WNumber	17615	Township	T84N
PWTS ID	0	Range	R5E
PWS ID	4965057	Section	32
Storet ID	31490004	Quarter	NE NE NE
SDWIS ID	2412262	Latitude	42.0469200000
USGS ID	420247090234201	Longitude	-90.3945700000
Project	Source Water Protection	Accuracy	
Operator	Unknown	UTM X	715625
		UTM Y	4658270

Site Type	Drilled hole	Drilling Company	Lingle, George
Well Status	Active	Drilling Date	01/01/1965
Field Located	No	Drilling Method	Unknown
Elevation	732 ft	Bedrock Depth	0 ft
Elevation Accuracy	Digital Elevation Model Accurate to 5 ft	Well Depth	697 ft
Landscape Position	Unknown	Total Depth	697 ft
		Well Types	Municipal, Public Supply
		Aquifers	Cambrian-Ordovician

Casing Construction Information

Date	08/01/1965	Casing Type	Steel
Start Depth	0.00 ft	End Depth	0.00 ft

Diameter	12.00 in	Amount	16.00 ft
-----------------	----------	---------------	----------

Date	08/01/1965	Casing Type	Steel
Start Depth	0.00 ft	End Depth	0.00 ft
Diameter	10.00 in	Amount	23.80 ft

Date	08/01/1965	Casing Type	Steel
Start Depth	0.00 ft	End Depth	0.00 ft
Diameter	8.00 in	Amount	287.00 ft

Date	08/01/1965	Casing Type	Steel
Start Depth	444.00 ft	End Depth	512.00 ft
Diameter	6.25 in	Amount	68.00 ft

Log Information

Date	09/02/1965
Log Types	Strip log
Prepared By	Northup, Richard Cox

Date	
Log Types	Unknown
Prepared By	IGS

Stratigraphy Information

System	Quaternary		
Series			
Group			
Formation			
Member			
Submember			
Start Depth	0.00 ft	End Depth	10.00 ft
Contact Accuracy			
Penetration			
Primary Lithology		Percent	
Secondary Lithology		Percent	
Tertiary Lithology		Percent	

System	Silurian
---------------	----------

Series
Group
Formation Tete Des Morts
Member
Submember
Start Depth 10.00 ft **End Depth** 20.00 ft
Contact Accuracy
Penetration
Primary Lithology Dolomite **Percent** 0
Secondary Lithology Chert/Chalcedony **Percent** 0
Tertiary Lithology **Percent**
Comments

System Silurian
Series
Group
Formation Mosalem
Member
Submember
Start Depth 20.00 ft **End Depth** 30.00 ft
Contact Accuracy
Penetration
Primary Lithology Dolomite **Percent** 0
Secondary Lithology Sandstone **Percent** 0
Tertiary Lithology **Percent**
Comments

System Ordovician
Series
Group
Formation Maquoketa
Member
Submember
Start Depth 30.00 ft **End Depth** 225.00 ft
Contact Accuracy
Penetration
Primary Lithology Shale **Percent** 0
Secondary Lithology Dolomite **Percent** 0
Tertiary Lithology **Percent**
Comments

System Ordovician
Series
Group
Formation Maquoketa
Member Elgin Limestone
Submember
Start Depth 225.00 ft **End Depth** 250.00 ft
Contact Accuracy

Penetration			
Primary Lithology	Dolomite	Percent	0
Secondary Lithology	Shale	Percent	0
Tertiary Lithology		Percent	
Comments			

System	Ordovician		
Series			
Group	Galena		
Formation	Dubuque		
Member			
Submember			
Start Depth	250.00 ft	End Depth	285.00 ft
Contact Accuracy			
Penetration			
Primary Lithology	Dolomite	Percent	100
Secondary Lithology		Percent	
Tertiary Lithology		Percent	
Comments			

System	Ordovician		
Series			
Group	Galena		
Formation	Wise Lake		
Member			
Submember			
Start Depth	285.00 ft	End Depth	355.00 ft
Contact Accuracy			
Penetration			
Primary Lithology	Dolomite	Percent	100
Secondary Lithology		Percent	
Tertiary Lithology		Percent	
Comments			

System	Ordovician		
Series			
Group	Galena		
Formation	Dunleith		
Member			
Submember			
Start Depth	355.00 ft	End Depth	485.00 ft
Contact Accuracy			
Penetration			
Primary Lithology	Dolomite	Percent	0
Secondary Lithology	Chert/Chalcedony	Percent	0
Tertiary Lithology		Percent	
Comments			

System	Ordovician		
---------------	------------	--	--

Series			
Group	Galena		
Formation	Decorah		
Member			
Submember			
Start Depth	485.00 ft	End Depth	507.00 ft
Contact Accuracy			
Penetration			
Primary Lithology	Ls/Dol Mixed	Percent	0
Secondary Lithology	Shale	Percent	0
Tertiary Lithology		Percent	
Comments			

System	Ordovician		
Series			
Group	Galena		
Formation	Platteville		
Member			
Submember			
Start Depth	507.00 ft	End Depth	555.00 ft
Contact Accuracy			
Penetration			
Primary Lithology	Ls/Dol Mixed	Percent	0
Secondary Lithology	Chert/Chalcedony	Percent	0
Tertiary Lithology	Limestone	Percent	0
Comments			

System	Ordovician		
Series			
Group	Ancell		
Formation	Glenwood		
Member			
Submember			
Start Depth	555.00 ft	End Depth	565.00 ft
Contact Accuracy			
Penetration			
Primary Lithology	Shale	Percent	100
Secondary Lithology		Percent	
Tertiary Lithology		Percent	
Comments			

System	Ordovician		
Series			
Group	Ancell		
Formation	St. Peter Sandstone		
Member			
Submember			
Start Depth	565.00 ft	End Depth	697.00 ft
Contact Accuracy			

Penetration			
Primary Lithology	Sandstone	Percent	100
Secondary Lithology		Percent	
Tertiary Lithology		Percent	
Comments			

Water Production Information

Date	08/01/1965	Start Time	
Aquifer	Unknown		
Static Water Level	150.00 ft	Yield	285 gallons per minute
Pumping Water Level	168 ft	Yield Method	Unknown
Measurement	Unknown	Pump Test	Yes
Pump Method	Unknown	Duration	0 mins
Comments			

Chip Storage Information

Date	09/01/1965		
Storage	PL6-241,242	Bin	
Number of Boxes	2	Number of Samples	135
Sample Intervals	5	Sample Gaps	0-10,20-25
Sample Top	10 ft	Sample Bottom	697 ft
Washed Top	10 ft	Washed Bottom	697 ft
Duplicate Storage			
Comments			

<https://www.iuhr.uiowa.edu/igs/geosam/well/17615/general-information>