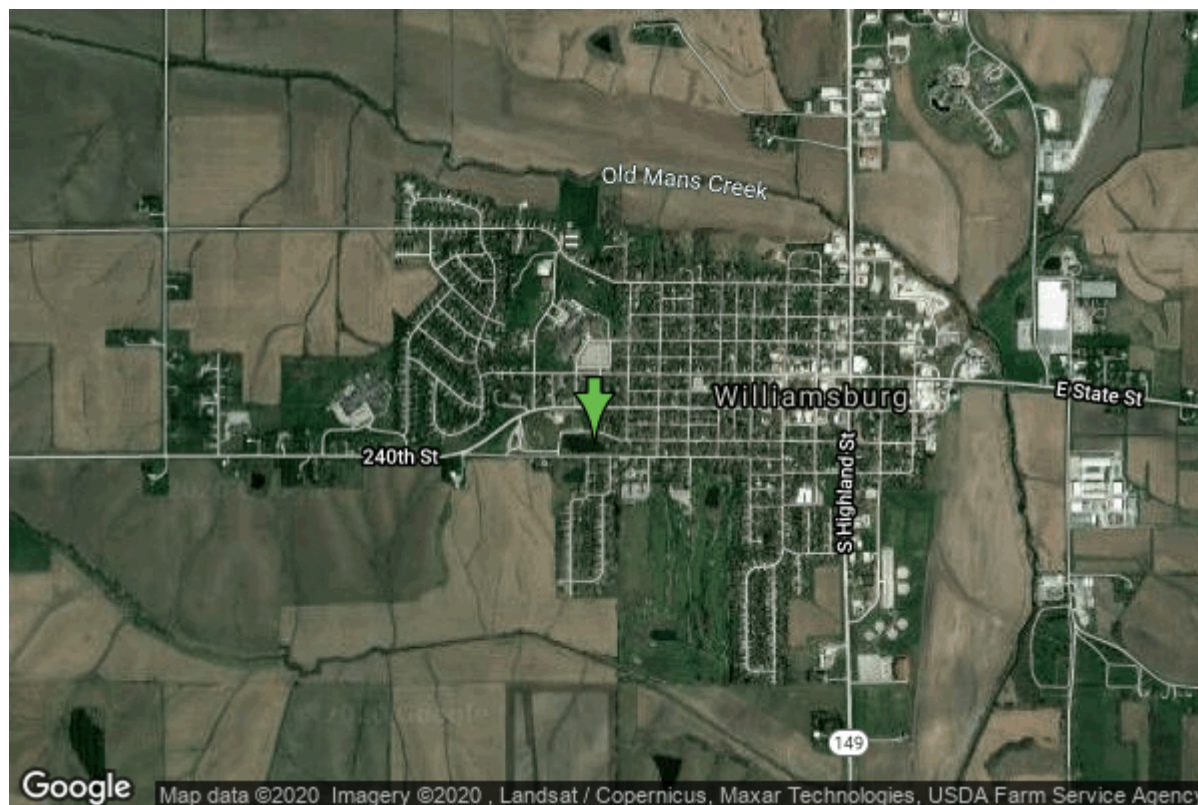


# Well W#17915 Information



<b>Date Received</b>		<b>State</b>	Iowa
<b>Owner Name</b>	Williamsburg, City Of	<b>County</b>	Iowa
<b>Alt Name</b>	#5	<b>Quadrangle</b>	Williamsburg, Iowa
<b>WNumber</b>	17915	<b>Township</b>	T79N
<b>PWTS ID</b>	0	<b>Range</b>	R10W
<b>PWS ID</b>	4884023	<b>Section</b>	9
<b>Storet ID</b>	0	<b>Quarter</b>	SW SE SE
<b>SDWIS ID</b>	2408107	<b>Latitude</b>	41.6595460000
<b>USGS ID</b>	0	<b>Longitude</b>	-92.0177070000
<b>Project Operator</b>	Source Water Protection Unknown	<b>Accuracy</b>	
		<b>UTM X</b>	581784
		<b>UTM Y</b>	4612443

---

<b>Site Type</b>	Drilled hole	<b>Drilling Company</b>	Hoeg & Ames (H.M. White)
<b>Well Status</b>	Not Used	<b>Drilling Date</b>	09/24/1965
<b>Field Located</b>	No	<b>Drilling Method</b>	Unknown
<b>Elevation</b>	839 ft	<b>Bedrock Depth</b>	0 ft
<b>Elevation Accuracy</b>	Digital Elevation Model Accurate to 5 ft	<b>Well Depth</b>	270 ft
<b>Landscape Position</b>	Unknown	<b>Total Depth</b>	270 ft
		<b>Well Types</b>	Municipal, Public Supply
		<b>Aquifers</b>	Pleistocene

# Casing Construction Information

<b>Date</b>	09/24/1965	<b>Casing Type</b>	Unknown
<b>Start Depth</b>	0.00 ft	<b>End Depth</b>	245.00 ft
<b>Diameter</b>	10.00 in	<b>Amount</b>	245.00 ft
<b>Comments</b>			

# Screen Construction Information

<b>Date</b>	09/24/1965	<b>Slot Size</b>	0.00
<b>Screen Type</b>	Unknown	<b>End Depth</b>	260.00 ft
<b>Start Depth</b>	245.00 ft	<b>Amount</b>	15 ft
<b>Diameter</b>	8.00 in		
<b>Comments</b>			

# Log Information

<b>Date</b>	03/11/1966
<b>Log Types</b>	Strip log
<b>Prepared By</b>	Northup, Dick
<b>Comments</b>	

---

<b>Date</b>	
<b>Log Types</b>	Drillers log
<b>Prepared By</b>	Williamsburg, City Of
<b>Comments</b>	

# Stratigraphy Information

<b>System</b>	Quaternary		
<b>Series</b>			
<b>Group</b>			
<b>Formation</b>			
<b>Member</b>			
<b>Submember</b>			
<b>Start Depth</b>	0.00 ft	<b>End Depth</b>	25.00 ft
<b>Contact Accuracy</b>			
<b>Penetration</b>			
<b>Primary Lithology</b>	Loess	<b>Percent</b>	100
<b>Secondary Lithology</b>		<b>Percent</b>	
<b>Tertiary Lithology</b>		<b>Percent</b>	
<b>Comments</b>			

---

<b>System</b>	Quaternary
<b>Series</b>	Pleistocene Series

<b>Group</b>			
<b>Formation</b>			
<b>Member</b>			
<b>Submember</b>			
<b>Start Depth</b>	25.00 ft	<b>End Depth</b>	260.00 ft
<b>Contact Accuracy</b>			
<b>Penetration</b>			
<b>Primary Lithology</b>	Till	<b>Percent</b>	0
<b>Secondary Lithology</b>	Sand And Gravel	<b>Percent</b>	0
<b>Tertiary Lithology</b>	Gumbotil	<b>Percent</b>	0
<b>Comments</b>			

<b>System</b>	Unknown		
<b>Series</b>			
<b>Group</b>			
<b>Formation</b>			
<b>Member</b>			
<b>Submember</b>			
<b>Start Depth</b>	260.00 ft	<b>End Depth</b>	270.00 ft
<b>Contact Accuracy</b>			
<b>Penetration</b>			
<b>Primary Lithology</b>		<b>Percent</b>	
<b>Secondary Lithology</b>		<b>Percent</b>	
<b>Tertiary Lithology</b>		<b>Percent</b>	
<b>Comments</b>			

## Water Production Information

<b>Date</b>	09/24/1965	<b>Start Time</b>	
<b>Aquifer</b>	Unknown		
<b>Static Water Level</b>	140.00 ft	<b>Yield</b>	215 gallons per minute
<b>Pumping Water Level</b>	211 ft	<b>Yield Method</b>	Unknown
<b>Measurement</b>	Unknown	<b>Pump Test</b>	No
<b>Pump Method</b>	Unknown	<b>Duration</b>	0 mins
<b>Comments</b>			

## Chip Storage Information

<b>Date</b>	10/01/1965		
<b>Storage</b>	PL6-273	<b>Bin</b>	
<b>Number of Boxes</b>	1	<b>Number of Samples</b>	52
<b>Sample Intervals</b>	5	<b>Sample Gaps</b>	260-70
<b>Sample Top</b>	0 ft	<b>Sample Bottom</b>	260 ft
<b>Washed Top</b>	0 ft	<b>Washed Bottom</b>	0 ft
<b>Duplicate Storage</b>			
<b>Comments</b>			

<https://www.ihr.uiowa.edu/igs/geosam/well/17915/general-information>