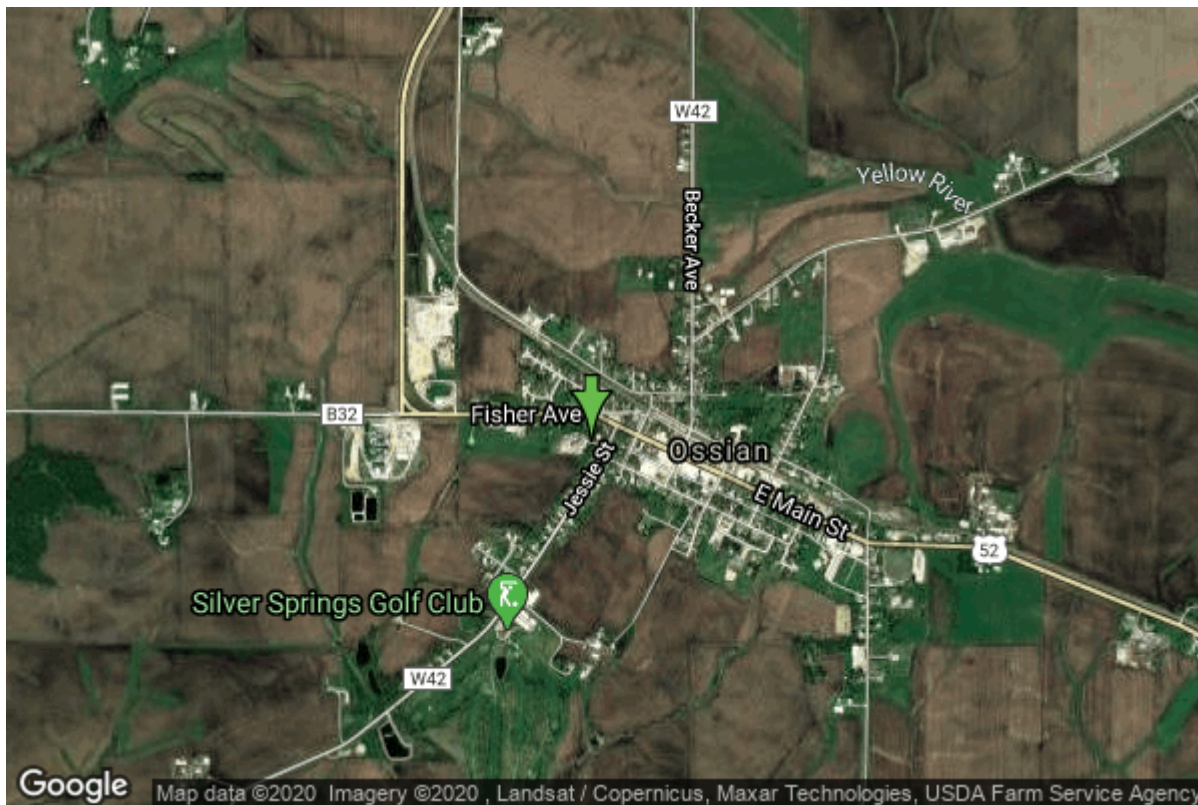


Well W#1824 Information



Date Received		State	Iowa
Owner Name	Ossian, City Of	County	Winneshiek
Alt Name	#1	Quadrangle	Calmar, Iowa
WNumber	1824	Township	T96N
PWTS ID	0	Range	R8W
PWS ID	9677007	Section	10
Storet ID	0	Quarter	SE NE NW
SDWIS ID	2410800	Latitude	43.1461020000
USGS ID	0	Longitude	-91.7680190000
Project	Source Water Protection	Accuracy	
Operator	Unknown	UTM X	600179
		UTM Y	4777776

Site Type	Drilled hole	Drilling Company	Varner Well Co.
Well Status	Standby	Drilling Date	01/01/1944
Field Located	No	Drilling Method	Cable
Elevation	1260 ft	Bedrock Depth	48 ft
Elevation Accuracy	Digital Elevation Model	Well Depth	981 ft
	Accurate to 5 ft	Total Depth	981 ft
Landscape Position	Unknown	Well Types	Municipal, Public Supply
		Aquifers	Cambrian-Ordovician, Ordovician

Casing Construction Information

Date	05/01/1944	Casing Type	Steel
Start Depth	0.00 ft	End Depth	52.00 ft
Diameter	20.00 in	Amount	52.00 ft
Comments			

Date	05/01/1944	Casing Type	Steel
Start Depth	0.00 ft	End Depth	229.00 ft
Diameter	12.00 in	Amount	229.00 ft
Comments			

Date	05/01/1944	Casing Type	Steel
Start Depth	425.00 ft	End Depth	543.00 ft
Diameter	10.00 in	Amount	118.00 ft
Comments			

Grout Construction Information

Date	05/01/1944	Grout Type	Cement	Grout Placement	Unknown
Start Depth	0.00 ft	End Depth			229.00 ft
Comments					

Log Information

Date	06/06/1945
Log Types	Strip log
Prepared By	Unknown
Comments	

Date	05/29/1944
Log Types	Pump Test
Prepared By	
Comments	

Date	05/01/1944
Log Types	Strip log
Prepared By	Hershey, H. Garland
Comments	

Date	
Log Types	Drillers log
Prepared By	Ossian, City Of
Comments	

Stratigraphy Information

System	Quaternary		
Series	Pleistocene Series		
Group	Wisconsinan Episode		
Formation	Peoria		
Member			
Submember			
Start Depth	0.00 ft	End Depth	15.00 ft
Contact Accuracy			
Penetration			
Primary Lithology	Loess	Percent	100
Secondary Lithology		Percent	
Tertiary Lithology		Percent	
Comments			

System	Quaternary		
Series	Pleistocene Series		
Group	Pre-Illinoian		
Formation			
Member			
Submember			
Start Depth	15.00 ft	End Depth	45.00 ft
Contact Accuracy			
Penetration			
Primary Lithology	Till	Percent	100
Secondary Lithology		Percent	
Tertiary Lithology		Percent	
Comments			

System	Ordovician		
Series			
Group			
Formation	Maquoketa		
Member			
Submember			
Start Depth	45.00 ft	End Depth	216.00 ft
Contact Accuracy			
Penetration			
Primary Lithology	Limestone	Percent	0
Secondary Lithology	Dolomite	Percent	0
Tertiary Lithology	Shale	Percent	0
Comments			

System	Ordovician		
Series			
Group	Galena		
Formation			

Member			
Submember			
Start Depth	216.00 ft	End Depth	440.00 ft
Contact Accuracy			
Penetration			
Primary Lithology	Limestone	Percent	0
Secondary Lithology	Dolomite	Percent	0
Tertiary Lithology		Percent	
Comments			

System	Ordovician		
Series			
Group	Galena		
Formation	Decorah		
Member			
Submember			
Start Depth	440.00 ft	End Depth	485.00 ft
Contact Accuracy			
Penetration			
Primary Lithology	Limestone	Percent	0
Secondary Lithology	Shale	Percent	0
Tertiary Lithology		Percent	
Comments			

System	Ordovician		
Series			
Group	Galena		
Formation	Platteville		
Member			
Submember			
Start Depth	485.00 ft	End Depth	515.00 ft
Contact Accuracy			
Penetration			
Primary Lithology	Limestone	Percent	0
Secondary Lithology	Dolomite	Percent	0
Tertiary Lithology		Percent	
Comments			

System	Ordovician		
Series			
Group	Ancell		
Formation	Glenwood		
Member			
Submember			
Start Depth	515.00 ft	End Depth	524.00 ft
Contact Accuracy			
Penetration			
Primary Lithology	Shale	Percent	100
Secondary Lithology		Percent	

Tertiary Lithology		Percent	
Comments			
System	Ordovician		
Series			
Group	Ancell		
Formation	St. Peter Sandstone		
Member			
Submember			
Start Depth	524.00 ft	End Depth	585.00 ft
Contact Accuracy			
Penetration			
Primary Lithology	Sandstone	Percent	100
Secondary Lithology		Percent	
Tertiary Lithology		Percent	
Comments			
System	Ordovician		
Series			
Group	Prairie Du Chien		
Formation	Shakopee		
Member			
Submember			
Start Depth	585.00 ft	End Depth	700.00 ft
Contact Accuracy			
Penetration			
Primary Lithology	Dolomite	Percent	0
Secondary Lithology	Sandstone	Percent	0
Tertiary Lithology		Percent	
Comments			
System	Ordovician		
Series			
Group	Prairie Du Chien		
Formation	Oneota		
Member			
Submember			
Start Depth	700.00 ft	End Depth	900.00 ft
Contact Accuracy			
Penetration			
Primary Lithology	Dolomite	Percent	0
Secondary Lithology	Chert/Chalcedony	Percent	0
Tertiary Lithology		Percent	
Comments			
System	Cambrian		
Series			
Group			
Formation	Jordan		

Member			
Submember			
Start Depth	900.00 ft	End Depth	980.00 ft
Contact Accuracy			
Penetration			
Primary Lithology	Sandstone	Percent	0
Secondary Lithology	Dolomite	Percent	0
Tertiary Lithology		Percent	
Comments			

System	Cambrian		
Series			
Group			
Formation	St. Lawrence		
Member			
Submember			
Start Depth	980.00 ft	End Depth	981.00 ft
Contact Accuracy			
Penetration			
Primary Lithology	Shale	Percent	100
Secondary Lithology		Percent	
Tertiary Lithology		Percent	
Comments			

Water Production Information

Date	07/01/2010	Start Time	
Aquifer			
Static Water Level	412.00 ft	Yield	0 gallons per minute
Pumping Water Level	437 ft	Yield Method	Unknown
Measurement	Airline	Pump Test	No
Pump Method	Unknown	Duration	0 mins
Comments	Water levels taken from DNR Jordan questionnaire.		

Date	05/01/1944	Start Time	
Aquifer	Unknown		
Static Water Level	380.00 ft	Yield	218 gallons per minute
Pumping Water Level	395 ft	Yield Method	Unknown
Measurement	Unknown	Pump Test	No
Pump Method	Unknown	Duration	0 mins
Comments			

Chip Storage Information

Date			
Storage	WL4-8,9	Bin	
Number of Boxes	2	Number of Samples	197

Sample Intervals	0	Sample Gaps	0-55
Sample Top	55 ft	Sample Bottom	981 ft
Washed Top	0 ft	Washed Bottom	0 ft
Duplicate Storage			
Comments			

<https://www.ihr.uiowa.edu/igs/geosam/well/1824/general-information>