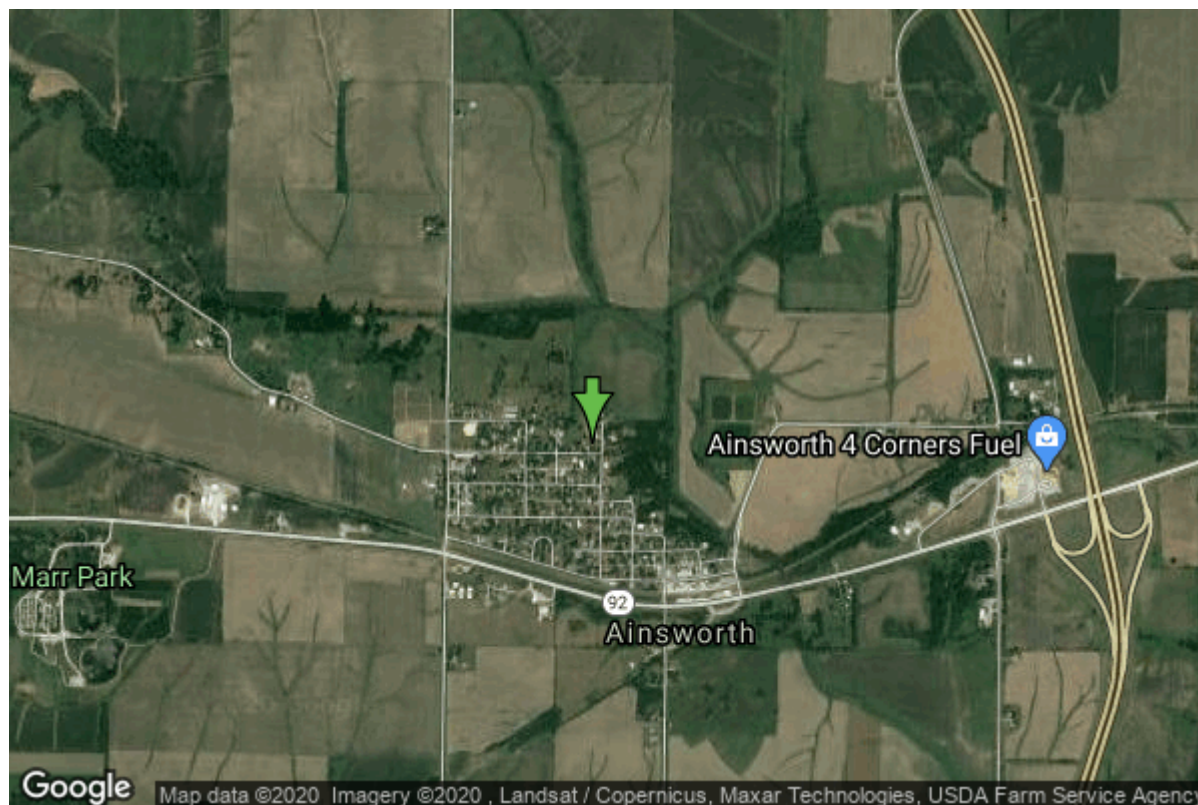


# Well W#1868 Information



<b>Date Received</b>		<b>State</b>	Iowa
<b>Owner Name</b>	Ainsworth, City Of	<b>County</b>	Washington
<b>Alt Name</b>	#2	<b>Quadrangle</b>	Ainsworth, Iowa
<b>WNumber</b>	1868	<b>Township</b>	T75N
<b>PWTS ID</b>	0	<b>Range</b>	R6W
<b>PWS ID</b>	9203007	<b>Section</b>	21
<b>Storet ID</b>	0	<b>Quarter</b>	NW NE NW
<b>SDWIS ID</b>	0	<b>Latitude</b>	41.2929440000
<b>USGS ID</b>	0	<b>Longitude</b>	-91.5545760000
<b>Project</b>	Source Water Protection	<b>Accuracy</b>	
<b>Operator</b>	Unknown	<b>UTM X</b>	621024
		<b>UTM Y</b>	4572285

---

<b>Site Type</b>	Drilled hole	<b>Drilling Company</b>	Edwards Inc., D.E.
<b>Well Status</b>	Not Used	<b>Drilling Date</b>	05/26/1944
<b>Field Located</b>	No	<b>Drilling Method</b>	Cable
<b>Elevation</b>	728 ft	<b>Bedrock Depth</b>	135 ft
<b>Elevation Accuracy</b>	Digital Elevation Model	<b>Well Depth</b>	202 ft
	Accurate to 5 ft	<b>Total Depth</b>	202 ft
<b>Landscape Position</b>	Hillside	<b>Well Types</b>	Municipal
		<b>Aquifers</b>	Mississippian, Pleistocene

# Casing Construction Information

<b>Date</b>	05/26/1944	<b>Casing Type</b>	Steel
<b>Start Depth</b>	-2.50 ft	<b>End Depth</b>	104.00 ft
<b>Diameter</b>	6.00 in	<b>Amount</b>	106.50 ft
<b>Comments</b>			

# Log Information

<b>Date</b>	01/09/1946
<b>Log Types</b>	Strip log
<b>Prepared By</b>	Schultz, Ethylmae
<b>Comments</b>	

---

<b>Date</b>	07/07/1945
<b>Log Types</b>	Strip log
<b>Prepared By</b>	Baldwin, D.J.
<b>Comments</b>	

---

<b>Date</b>	05/26/1944
<b>Log Types</b>	Drillers log
<b>Prepared By</b>	Edwards Inc., D.E.
<b>Comments</b>	

# Stratigraphy Information

<b>System</b>	Quaternary		
<b>Series</b>	Pleistocene Series		
<b>Group</b>	Pre-Illinoian		
<b>Formation</b>			
<b>Member</b>			
<b>Submember</b>			
<b>Start Depth</b>	0.00 ft	<b>End Depth</b>	70.00 ft
<b>Contact Accuracy</b>			
<b>Penetration</b>			
<b>Primary Lithology</b>	Till - Oxidized And Unleached	<b>Percent</b>	100
<b>Secondary Lithology</b>	Unknown	<b>Percent</b>	0
<b>Tertiary Lithology</b>	Unknown	<b>Percent</b>	0
<b>Comments</b>			

---

<b>System</b>	Quaternary
<b>Series</b>	Pleistocene Series
<b>Group</b>	Pre-Illinoian
<b>Formation</b>	
<b>Member</b>	

<b>Submember</b>			
<b>Start Depth</b>	70.00 ft	<b>End Depth</b>	97.00 ft
<b>Contact Accuracy</b>			
<b>Penetration</b>			
<b>Primary Lithology</b>	Till - Unoxidized And Unleached	<b>Percent</b>	100
<b>Secondary Lithology</b>		<b>Percent</b>	
<b>Tertiary Lithology</b>		<b>Percent</b>	
<b>Comments</b>			

---

<b>System</b>	Quaternary		
<b>Series</b>	Pleistocene Series		
<b>Group</b>			
<b>Formation</b>			
<b>Member</b>			
<b>Submember</b>			
<b>Start Depth</b>	97.00 ft	<b>End Depth</b>	135.00 ft
<b>Contact Accuracy</b>			
<b>Penetration</b>			
<b>Primary Lithology</b>	Sand And Gravel	<b>Percent</b>	100
<b>Secondary Lithology</b>		<b>Percent</b>	
<b>Tertiary Lithology</b>		<b>Percent</b>	
<b>Comments</b>			

---

<b>System</b>	Mississippian (Subsystem Of Carboniferous System)		
<b>Series</b>			
<b>Group</b>	Augusta		
<b>Formation</b>	Burlington		
<b>Member</b>	Haight Creek		
<b>Submember</b>			
<b>Start Depth</b>	135.00 ft	<b>End Depth</b>	170.00 ft
<b>Contact Accuracy</b>			
<b>Penetration</b>			
<b>Primary Lithology</b>	Dolomite	<b>Percent</b>	0
<b>Secondary Lithology</b>	Chert/Chalcedony	<b>Percent</b>	0
<b>Tertiary Lithology</b>		<b>Percent</b>	
<b>Comments</b>			

---

<b>System</b>	Mississippian (Subsystem Of Carboniferous System)		
<b>Series</b>			
<b>Group</b>	Sub-Augusta		
<b>Formation</b>	Maynes Creek		
<b>Member</b>	Wassonville		
<b>Submember</b>			
<b>Start Depth</b>	170.00 ft	<b>End Depth</b>	198.00 ft
<b>Contact Accuracy</b>			
<b>Penetration</b>			
<b>Primary Lithology</b>	Dolomite	<b>Percent</b>	0
<b>Secondary Lithology</b>	Limestone	<b>Percent</b>	0

<b>Tertiary Lithology</b>		<b>Percent</b>	
<b>Comments</b>			
<b>System</b>	Unknown		
<b>Series</b>			
<b>Group</b>			
<b>Formation</b>			
<b>Member</b>			
<b>Submember</b>			
<b>Start Depth</b>	198.00 ft	<b>End Depth</b>	202.00 ft
<b>Contact Accuracy</b>			
<b>Penetration</b>			
<b>Primary Lithology</b>	Shale	<b>Percent</b>	0
<b>Secondary Lithology</b>	Siltstone	<b>Percent</b>	0
<b>Tertiary Lithology</b>		<b>Percent</b>	
<b>Comments</b>			

## Water Production Information

<b>Date</b>	05/26/1944	<b>Start Time</b>	
<b>Aquifer</b>	Unknown		
<b>Static Water Level</b>	75.00 ft	<b>Yield</b>	55 gallons per minute
<b>Pumping Water Level</b>	158 ft	<b>Yield Method</b>	Unknown
<b>Measurement</b>	Unknown	<b>Pump Test</b>	No
<b>Pump Method</b>	Unknown	<b>Duration</b>	0 mins
<b>Comments</b>			

## Chip Storage Information

<b>Date</b>		<b>Bin</b>	
<b>Storage</b>	WL6-3	<b>Number of Samples</b>	16
<b>Number of Boxes</b>	1	<b>Sample Gaps</b>	
<b>Sample Intervals</b>	0	<b>Sample Bottom</b>	202 ft
<b>Sample Top</b>	0 ft	<b>Washed Bottom</b>	0 ft
<b>Washed Top</b>	0 ft		
<b>Duplicate Storage</b>			
<b>Comments</b>			

<https://www.iuhr.uiowa.edu/igs/geosam/well/1868/general-information>