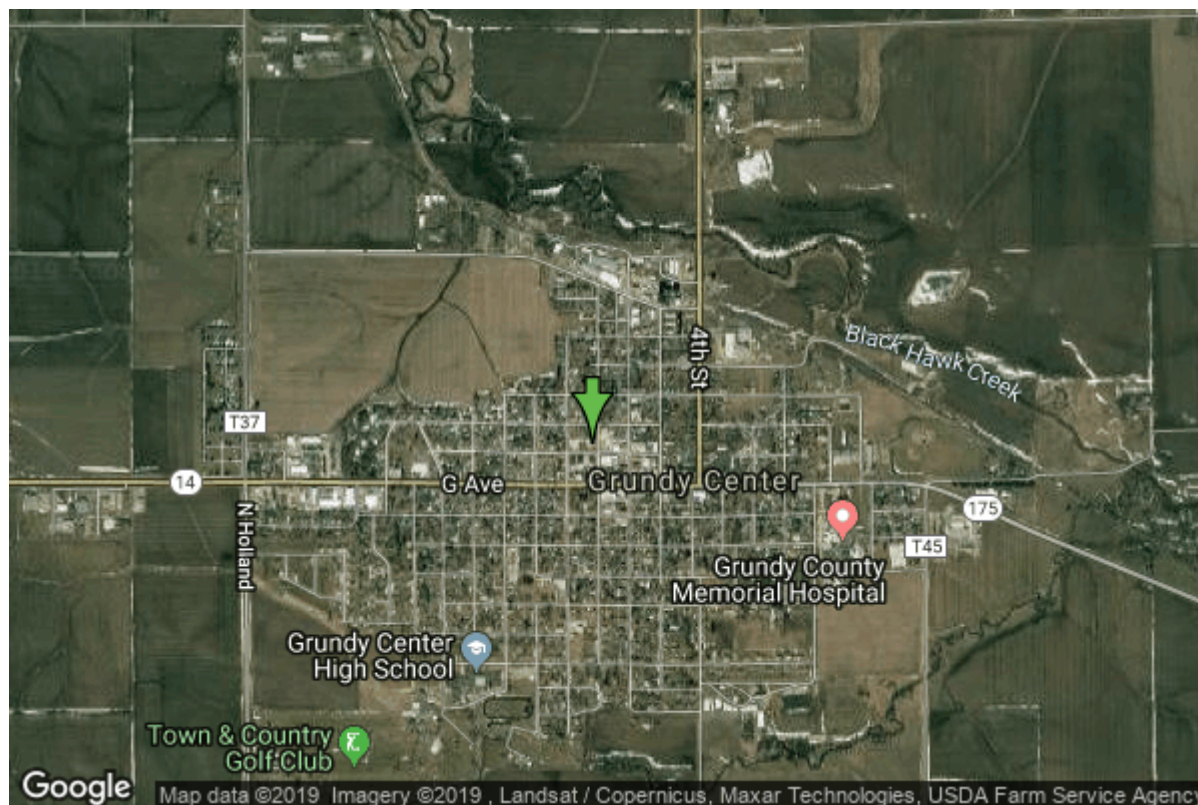


Well W#1897 Information



Date Received		State	Iowa
Owner Name	Grundy Center, City Of	County	Grundy
Alt Name	#3	Quadrangle	Grundy Center, Iowa
WNumber	1897	Township	T87N
PWTS ID	0	Range	R17W
PWS ID	3833013	Section	12
Storet ID	0	Quarter	NE SE SW
SDWIS ID	2411696	Latitude	42.3627900000
USGS ID	0	Longitude	-92.7721700000
Project	Source Water Protection	Accuracy	
Operator	Unknown	UTM X	518761
		UTM Y	4690083

Site Type	Drilled hole	Drilling Company	Hoeg & Ames (H.M. White)
Well Status	Standby	Drilling Date	07/26/1944
Field Located	No	Drilling Method	Cable
Elevation	1019 ft	Bedrock Depth	0 ft
Elevation Accuracy	Digital Elevation Model Accurate to 5 ft	Well Depth	559 ft
Landscape Position	Upland	Total Depth	559 ft
		Well Types	Municipal, Public Supply
		Aquifers	Devonian

Casing Construction Information

Date	07/26/1944	Casing Type	Steel
Start Depth	-1.00 ft	End Depth	24.00 ft
Diameter	15.50 in	Amount	25.00 ft
Comments			

Date	07/26/1944	Casing Type	Steel
Start Depth	-1.10 ft	End Depth	330.00 ft
Diameter	10.00 in	Amount	331.10 ft
Comments			

Grout Construction Information

Date	07/26/1944	Grout Placement	Unknown
Grout Type	Cement	End Depth	40.00 ft
Start Depth	0.00 ft		
Comments			

Pump Construction Information

Date	07/26/1944	Pump Type	Unknown
Diameter	0.00 in	Rating	0
Depth Intake	165.00 ft		
Comments			

Log Information

Date	08/01/1944
Log Types	Strip log
Prepared By	Unknown
Comments	

Date	
Log Types	Drillers log
Prepared By	Grundy Center, City Of
Comments	

Stratigraphy Information

System	Quaternary
Series	
Group	
Formation	

Member			
Submember			
Start Depth	0.00 ft	End Depth	3.00 ft
Contact Accuracy			
Penetration			
Primary Lithology	Soil Or Fill	Percent	100
Secondary Lithology		Percent	
Tertiary Lithology		Percent	
Comments			

System	Quaternary		
Series			
Group			
Formation			
Member			
Submember			
Start Depth	3.00 ft	End Depth	155.00 ft
Contact Accuracy			
Penetration			
Primary Lithology	Till	Percent	100
Secondary Lithology		Percent	
Tertiary Lithology		Percent	
Comments			

System	Devonian		
Series			
Group	Yellow Spring (New Albany)		
Formation	Lime Creek		
Member	Owen		
Submember			
Start Depth	155.00 ft	End Depth	180.00 ft
Contact Accuracy			
Penetration			
Primary Lithology	Shale	Percent	0
Secondary Lithology	Limestone	Percent	0
Tertiary Lithology		Percent	
Comments			

System	Devonian		
Series			
Group	Yellow Spring (New Albany)		
Formation	Lime Creek		
Member	Cerro Gordo		
Submember			
Start Depth	180.00 ft	End Depth	225.00 ft
Contact Accuracy			
Penetration			
Primary Lithology	Shale	Percent	0
Secondary Lithology	Limestone	Percent	0

Tertiary Lithology		Percent	
Comments			
System	Devonian		
Series			
Group	Yellow Spring (New Albany)		
Formation	Lime Creek		
Member	Juniper Hill		
Submember			
Start Depth	225.00 ft	End Depth	350.00 ft
Contact Accuracy			
Penetration			
Primary Lithology	Shale	Percent	0
Secondary Lithology	Limestone	Percent	0
Tertiary Lithology		Percent	
Comments			
System	Devonian		
Series			
Group	Cedar Valley		
Formation	Coralville		
Member			
Submember			
Start Depth	350.00 ft	End Depth	460.00 ft
Contact Accuracy			
Penetration			
Primary Lithology	Limestone	Percent	0
Secondary Lithology	Dolomite	Percent	0
Tertiary Lithology	Shale	Percent	0
Comments			
System	Devonian		
Series			
Group	Cedar Valley		
Formation	Little Cedar		
Member	Rapid		
Submember			
Start Depth	460.00 ft	End Depth	559.00 ft
Contact Accuracy			
Penetration			
Primary Lithology	Dolomite	Percent	0
Secondary Lithology	Limestone	Percent	0
Tertiary Lithology	Chert/Chalcedony	Percent	0
Comments			

Water Production Information

Date	07/26/1944	Start Time	
Aquifer	Unknown	Yield	300 gallons per minute
Static Water Level	138.00 ft	Yield Method	Unknown
Pumping Water Level	147 ft	Pump Test	Yes
Measurement	Unknown	Duration	0 mins
Pump Method	Unknown		
Comments			

Chip Storage Information

Date		Bin	
Storage	WL8-4	Number of Samples	101
Number of Boxes	1	Sample Gaps	70-75, 480-495, 556-59
Sample Intervals	0	Sample Bottom	556 ft
Sample Top	0 ft	Washed Bottom	556 ft
Washed Top	310 ft		
Duplicate Storage			
Comments			

<https://www.iuhr.uiowa.edu/igs/geosam/well/1897/general-information>