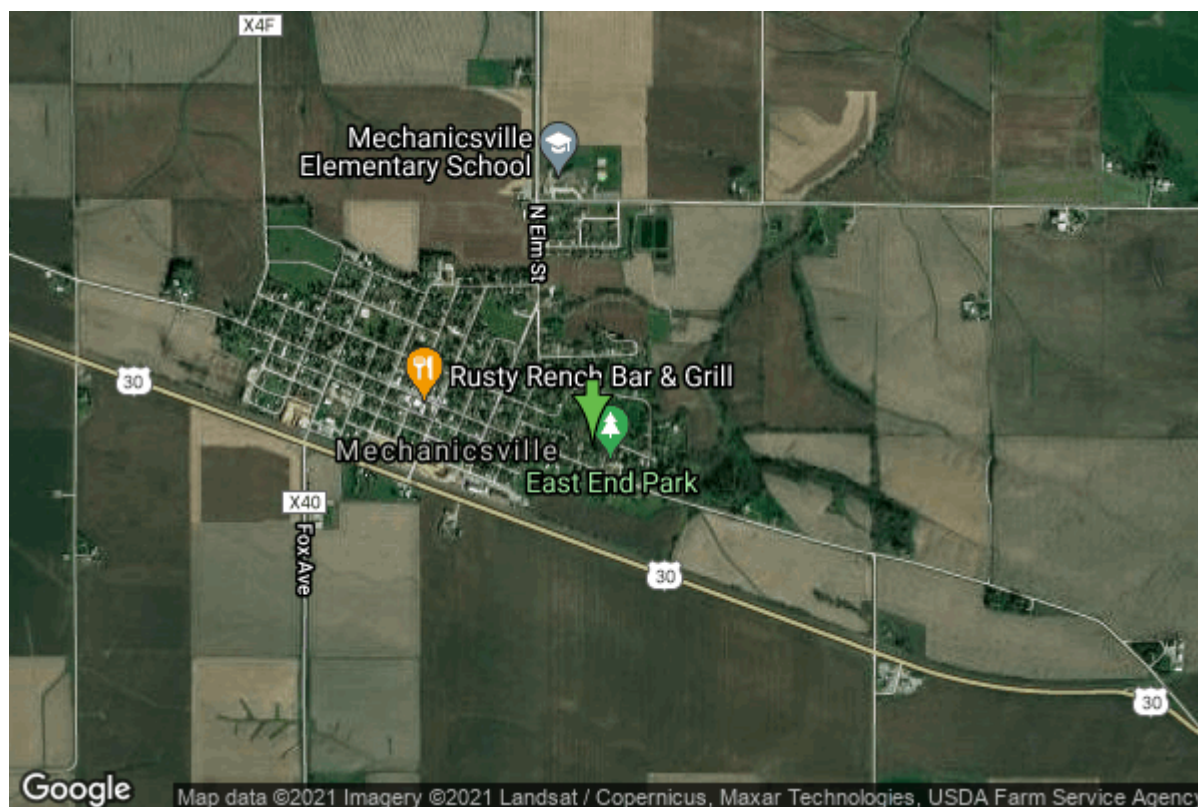


# Well W#20138 Information



<b>Date Received</b>		<b>State</b>	Iowa
<b>Owner Name</b>	Mechanicsville, City Of	<b>County</b>	Cedar
<b>Alt Name</b>	#3	<b>Quadrangle</b>	Stanwood, Iowa
<b>WNumber</b>	20138	<b>Township</b>	T82N
<b>PWTS ID</b>	0	<b>Range</b>	R3W
<b>PWS ID</b>	1667076	<b>Section</b>	19
<b>Storet ID</b>	0	<b>Quarter</b>	NW NW NE
<b>SDWIS ID</b>	2412071	<b>Latitude</b>	41.9028900000
<b>USGS ID</b>	0	<b>Longitude</b>	-91.2461300000
<b>Project Operator</b>	Source Water Protection Unknown	<b>Accuracy</b>	
		<b>UTM X</b>	645475
		<b>UTM Y</b>	4640482

<b>Site Type</b>	Drilled hole	<b>Drilling Company</b>	Unknown
<b>Well Status</b>	Active	<b>Drilling Date</b>	01/01/1967
<b>Field Located</b>	No	<b>Drilling Method</b>	Unknown
<b>Elevation</b>	906 ft	<b>Bedrock Depth</b>	85 ft
<b>Elevation Accuracy</b>	Digital Elevation Model Accurate to 5 ft	<b>Well Depth</b>	450 ft
<b>Landscape Position</b>	Unknown	<b>Total Depth</b>	455 ft
		<b>Well Types</b>	Municipal, Public Supply
		<b>Aquifers</b>	Silurian

## Casing Construction Information

<b>Date</b>	07/12/1967	<b>Casing Type</b>	Unknown
<b>Start Depth</b>	-1.00 ft	<b>End Depth</b>	85.00 ft

<b>Diameter</b>	15.50 in	<b>Amount</b>	86.00 ft
-----------------	----------	---------------	----------

**Comments**

---

<b>Date</b>	07/12/1967	<b>Casing Type</b>	Unknown
<b>Start Depth</b>	0.00 ft	<b>End Depth</b>	0.00 ft
<b>Diameter</b>	10.00 in	<b>Amount</b>	299.00 ft

**Comments**

---

## Log Information

**Date**

<b>Log Types</b>	Strip log
<b>Prepared By</b>	Unknown

**Comments**

---

**Date**

<b>Log Types</b>	Drillers log
<b>Prepared By</b>	Mechanicsville, City Of

**Comments**

---

## Stratigraphy Information

<b>System</b>	Quaternary		
<b>Series</b>	Pleistocene Series		
<b>Group</b>			
<b>Formation</b>			
<b>Member</b>			
<b>Submember</b>			
<b>Start Depth</b>	0.00 ft	<b>End Depth</b>	85.00 ft
<b>Contact Accuracy</b>			
<b>Penetration</b>			
<b>Primary Lithology</b>	Till	<b>Percent</b>	99
<b>Secondary Lithology</b>	Soil Or Fill	<b>Percent</b>	1
<b>Tertiary Lithology</b>		<b>Percent</b>	

**Comments**

---

<b>System</b>	Silurian		
<b>Series</b>			
<b>Group</b>			
<b>Formation</b>	Gower		
<b>Member</b>			
<b>Submember</b>			
<b>Start Depth</b>	85.00 ft	<b>End Depth</b>	163.00 ft
<b>Contact Accuracy</b>			
<b>Penetration</b>			
<b>Primary Lithology</b>	Dolomite	<b>Percent</b>	99
<b>Secondary Lithology</b>	Chert/Chalcedony	<b>Percent</b>	1

<b>Tertiary Lithology</b>	Unknown	<b>Percent</b>	0
<b>Comments</b>			
<b>System</b>	Silurian		
<b>Series</b>			
<b>Group</b>			
<b>Formation</b>	Scotch Grove		
<b>Member</b>			
<b>Submember</b>			
<b>Start Depth</b>	163.00 ft	<b>End Depth</b>	325.00 ft
<b>Contact Accuracy</b>			
<b>Penetration</b>			
<b>Primary Lithology</b>	Dolomite	<b>Percent</b>	99
<b>Secondary Lithology</b>	Chert/Chalcedony	<b>Percent</b>	1
<b>Tertiary Lithology</b>	Unknown	<b>Percent</b>	0
<b>Comments</b>			
<b>System</b>	Silurian		
<b>Series</b>			
<b>Group</b>			
<b>Formation</b>	Hopkinton		
<b>Member</b>			
<b>Submember</b>			
<b>Start Depth</b>	325.00 ft	<b>End Depth</b>	410.00 ft
<b>Contact Accuracy</b>			
<b>Penetration</b>			
<b>Primary Lithology</b>	Dolomite	<b>Percent</b>	99
<b>Secondary Lithology</b>	Chert/Chalcedony	<b>Percent</b>	1
<b>Tertiary Lithology</b>		<b>Percent</b>	
<b>Comments</b>			
<b>System</b>	Silurian		
<b>Series</b>			
<b>Group</b>			
<b>Formation</b>	Blanding		
<b>Member</b>			
<b>Submember</b>			
<b>Start Depth</b>	410.00 ft	<b>End Depth</b>	455.00 ft
<b>Contact Accuracy</b>			
<b>Penetration</b>			
<b>Primary Lithology</b>	Dolomite	<b>Percent</b>	60
<b>Secondary Lithology</b>	Chert/Chalcedony	<b>Percent</b>	40
<b>Tertiary Lithology</b>		<b>Percent</b>	
<b>Comments</b>			

## Water Production Information

<b>Date</b>	07/12/1967	<b>Start Time</b>	
<b>Aquifer</b>	Unknown		
<b>Static Water Level</b>	58.00 ft	<b>Yield</b>	200 gallons per minute
<b>Pumping Water Level</b>	143 ft	<b>Yield Method</b>	Unknown
<b>Measurement</b>	Unknown	<b>Pump Test</b>	No
<b>Pump Method</b>	Unknown	<b>Duration</b>	0 mins
<b>Comments</b>			

## Chip Storage Information

<b>Date</b>	12/07/1967		
<b>Storage</b>	PL7-260	<b>Bin</b>	
<b>Number of Boxes</b>	1	<b>Number of Samples</b>	92
<b>Sample Intervals</b>	5	<b>Sample Gaps</b>	
<b>Sample Top</b>	0 ft	<b>Sample Bottom</b>	455 ft
<b>Washed Top</b>	85 ft	<b>Washed Bottom</b>	455 ft
<b>Duplicate Storage</b>			
<b>Comments</b>			

<https://www.iuhr.uiowa.edu/igs/geosam/well/20138/general-information>