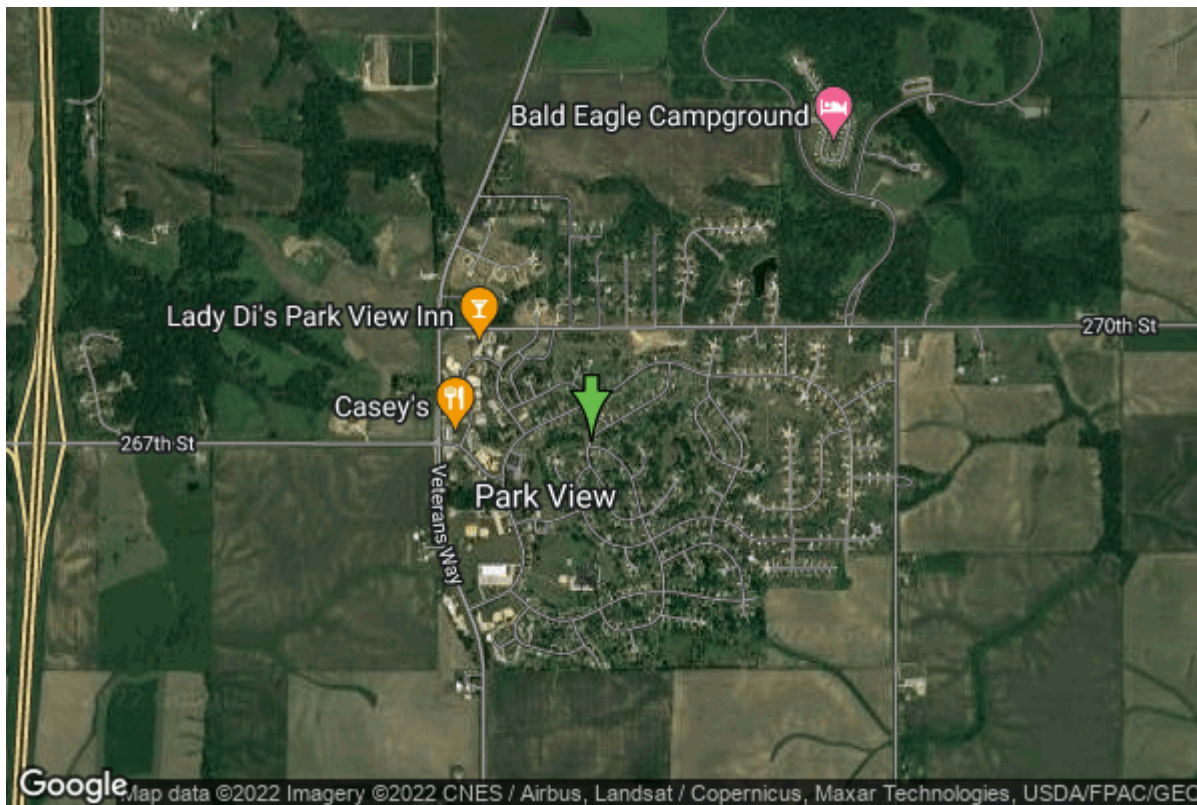


# Well W#20189 Information



<b>Date Received</b>		<b>State</b>	Iowa
<b>Owner Name</b>	Park View Water Company	<b>County</b>	Scott
<b>Alt Name</b>	WELL #1	<b>Quadrangle</b>	Eldridge, Iowa
<b>WNumber</b>	20189	<b>Township</b>	T80N
<b>PWTS ID</b>	0	<b>Range</b>	R4E
<b>PWS ID</b>	8200855	<b>Section</b>	31
<b>Storet ID</b>	0	<b>Quarter</b>	NW SE NW
<b>SDWIS ID</b>	2409696	<b>Latitude</b>	41.6950100000
<b>USGS ID</b>	0	<b>Longitude</b>	-90.5418280000
<b>Project</b>	Source Water Protection	<b>Accuracy</b>	
<b>Operator</b>	Unknown	<b>UTM X</b>	704557
		<b>UTM Y</b>	4618834

<b>Site Type</b>	Drilled hole	<b>Drilling Company</b>	Winslow Well Co.
<b>Well Status</b>	Active	<b>Drilling Date</b>	09/20/1967
<b>Field Located</b>	No	<b>Drilling Method</b>	Unknown
<b>Elevation</b>	759 ft	<b>Bedrock Depth</b>	0 ft
<b>Elevation Accuracy</b>	Digital Elevation Model Accurate to 5 ft	<b>Well Depth</b>	480 ft
<b>Landscape Position</b>	Hillside	<b>Total Depth</b>	480 ft
		<b>Well Types</b>	Public Supply
		<b>Aquifers</b>	Silurian

## Log Information

<b>Date</b>	
<b>Log Types</b>	Strip log

Prepared By  
Comments

Unknown

## Chip Storage Information

<b>Date</b>	12/29/1967		
<b>Storage</b>	PL7-280	<b>Bin</b>	
<b>Number of Boxes</b>	1	<b>Number of Samples</b>	75
<b>Sample Intervals</b>	0	<b>Sample Gaps</b>	220-225
<b>Sample Top</b>	0 ft	<b>Sample Bottom</b>	410 ft
<b>Washed Top</b>	40 ft	<b>Washed Bottom</b>	410 ft
<b>Duplicate Storage</b>			
<b>Comments</b>			

<https://www.ihr.uiowa.edu/igs/geosam/well/20189/general-information>