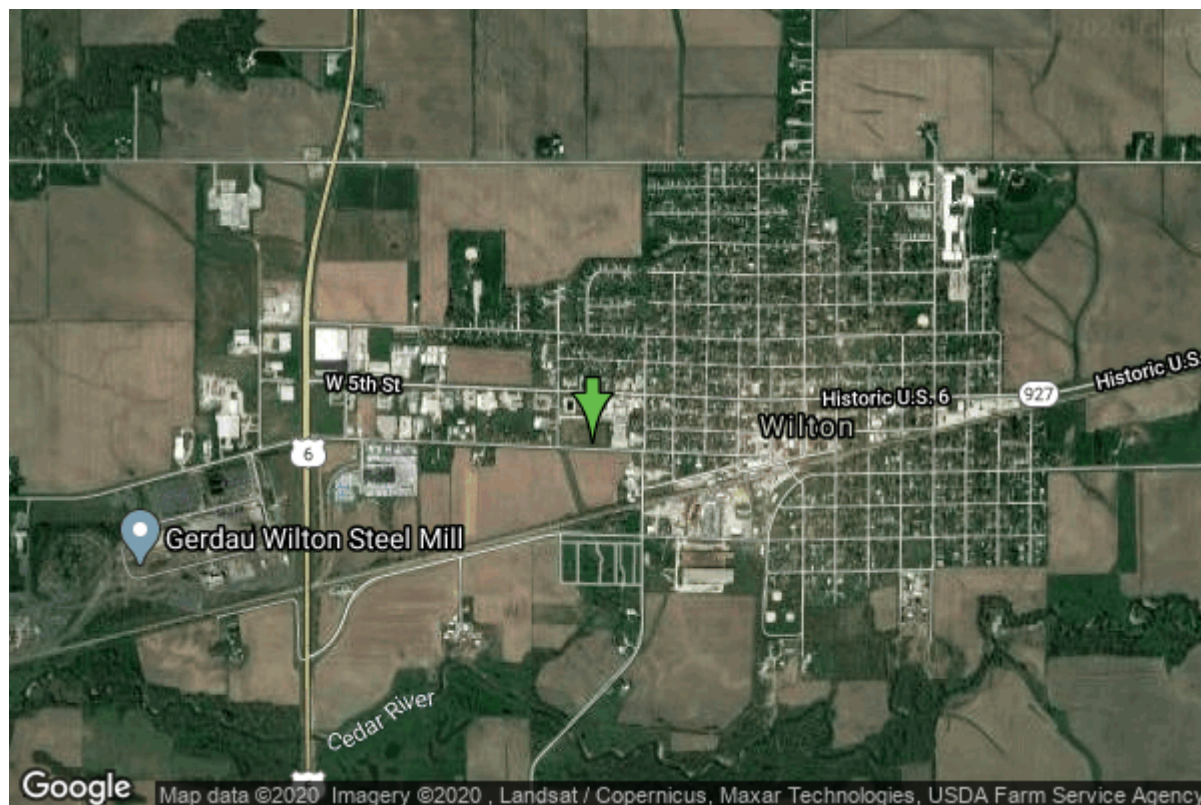


Well W#20270 Information



Date Received		State	Iowa
Owner Name	Wilton, City Of	County	Muscatine
Alt Name	#1	Quadrangle	Wilton Junction, Iowa
WNumber	20270	Township	T78N
PWTS ID	0	Range	R2W
PWS ID	7078026	Section	1
Storet ID	0	Quarter	SE NW NE
SDWIS ID	2408929	Latitude	41.5883500000
USGS ID	413520091013701	Longitude	-91.0252500000
Project	Source Water Protection	Accuracy	
Operator	Unknown	UTM X	664598
		UTM Y	4605956

Site Type	Drilled hole	Drilling Company	Layne Western - Ia.
Well Status	Active	Drilling Date	03/14/1968
Field Located	No	Drilling Method	Rotary
Elevation	686 ft	Bedrock Depth	190 ft
Elevation Accuracy	Digital Elevation Model	Well Depth	450 ft
	Accurate to 5 ft	Total Depth	450 ft
Landscape Position	Unknown	Well Types	Municipal, Public Supply
		Aquifers	Silurian

Casing Construction Information

Date	03/14/1968	Casing Type	Steel
Start Depth	0.00 ft	End Depth	0.00 ft

Diameter	8.00 in	Amount	315.00 ft
Comments			

Log Information

Date	03/01/1968
Log Types	Strip log
Prepared By	Unknown
Comments	

Stratigraphy Information

System	Quaternary		
Series			
Group			
Formation			
Member			
Submember			
Start Depth	0.00 ft	End Depth	5.00 ft
Contact Accuracy			
Penetration			
Primary Lithology	Loess	Percent	100
Secondary Lithology		Percent	
Tertiary Lithology		Percent	
Comments			

System	Quaternary		
Series	Pleistocene Series		
Group			
Formation			
Member			
Submember			
Start Depth	5.00 ft	End Depth	190.00 ft
Contact Accuracy			
Penetration			
Primary Lithology	Sand And Gravel	Percent	0
Secondary Lithology	Till	Percent	0
Tertiary Lithology	Gumbotil	Percent	0
Comments			

System	Silurian		
Series			
Group			
Formation			
Member			
Submember			
Start Depth	190.00 ft	End Depth	330.00 ft

Contact Accuracy			
Penetration			
Primary Lithology	Dolomite	Percent	100
Secondary Lithology		Percent	
Tertiary Lithology		Percent	
Comments			
<hr/>			
System	Silurian		
Series			
Group			
Formation	Blanding		
Member			
Submember			
Start Depth	330.00 ft	End Depth	413.00 ft
Contact Accuracy			
Penetration			
Primary Lithology	Dolomite	Percent	0
Secondary Lithology	Chert/Chalcedony	Percent	0
Tertiary Lithology		Percent	
Comments			
<hr/>			
System	Silurian		
Series			
Group			
Formation	Tete Des Morts/Mosalem Undiff.		
Member			
Submember			
Start Depth	413.00 ft	End Depth	424.00 ft
Contact Accuracy			
Penetration			
Primary Lithology	Dolomite	Percent	100
Secondary Lithology		Percent	
Tertiary Lithology		Percent	
Comments			
<hr/>			
System	Ordovician		
Series			
Group			
Formation	Maquoketa		
Member	Brainard Shale		
Submember			
Start Depth	424.00 ft	End Depth	450.00 ft
Contact Accuracy			
Penetration			
Primary Lithology	Shale	Percent	0
Secondary Lithology	Dolomite	Percent	0
Tertiary Lithology		Percent	
Comments			

Water Production Information

Date	03/14/1968	Start Time	
Aquifer	Unknown		
Static Water Level	33.00 ft	Yield	403 gallons per minute
Pumping Water Level	102 ft	Yield Method	Unknown
Measurement	Unknown	Pump Test	No
Pump Method	Unknown	Duration	0 mins
Comments			

Chip Storage Information

Date	03/08/1968		
Storage	PL7-330	Bin	
Number of Boxes	1	Number of Samples	90
Sample Intervals	5	Sample Gaps	
Sample Top	0 ft	Sample Bottom	450 ft
Washed Top	190 ft	Washed Bottom	450 ft
Duplicate Storage			
Comments			

<https://www.iuhr.uiowa.edu/igs/geosam/well/20270/general-information>