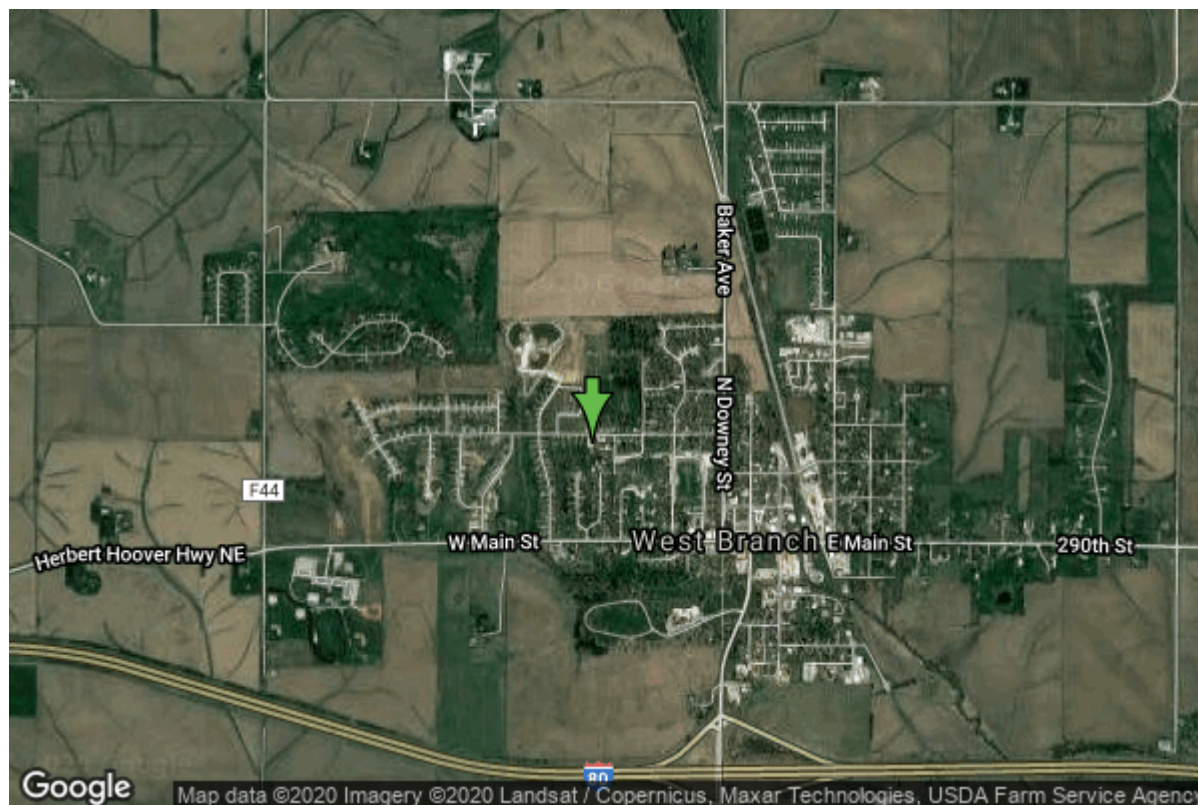


# Well W#20575 Information



<b>Date Received</b>		<b>State</b>	Iowa
<b>Owner Name</b>	West Branch, City Of	<b>County</b>	Cedar
<b>Alt Name</b>	#3	<b>Quadrangle</b>	West Branch, Iowa
<b>WNumber</b>	20575	<b>Township</b>	T79N
<b>PWTS ID</b>	0	<b>Range</b>	R4W
<b>PWS ID</b>	1694000	<b>Section</b>	6
<b>Storet ID</b>	0	<b>Quarter</b>	SE SE NW
<b>SDWIS ID</b>	2407647	<b>Latitude</b>	41.6744960000
<b>USGS ID</b>	0	<b>Longitude</b>	-91.3515030000
<b>Project</b>	Source Water Protection	<b>Accuracy</b>	
<b>Operator</b>	Unknown	<b>UTM X</b>	637220
		<b>UTM Y</b>	4614950

<b>Site Type</b>	Drilled hole	<b>Drilling Company</b>	Winslow Well Co.
<b>Well Status</b>	Not Used	<b>Drilling Date</b>	06/08/1968
<b>Field Located</b>	No	<b>Drilling Method</b>	Unknown
<b>Elevation</b>	778 ft	<b>Bedrock Depth</b>	0 ft
<b>Elevation Accuracy</b>	Digital Elevation Model Accurate to 5 ft	<b>Well Depth</b>	446 ft
<b>Landscape Position</b>	Unknown	<b>Total Depth</b>	446 ft
		<b>Well Types</b>	Municipal, Public Supply
		<b>Aquifers</b>	Silurian

## Casing Construction Information

<b>Date</b>	06/08/1968	<b>Casing Type</b>	Steel
<b>Start Depth</b>	0.00 ft	<b>End Depth</b>	106.00 ft

<b>Diameter</b>	22.00 in	<b>Amount</b>	106.00 ft
<b>Comments</b>			
<b>Date</b>	06/08/1968	<b>Casing Type</b>	Steel
<b>Start Depth</b>	-3.80 ft	<b>End Depth</b>	125.00 ft
<b>Diameter</b>	11.50 in	<b>Amount</b>	0.80 ft
<b>Comments</b>			
<b>Date</b>	06/08/1968	<b>Casing Type</b>	Steel
<b>Start Depth</b>	145.00 ft	<b>End Depth</b>	160.00 ft
<b>Diameter</b>	11.50 in	<b>Amount</b>	15.00 ft
<b>Comments</b>			
<b>Date</b>	06/08/1968	<b>Casing Type</b>	Perforated Steel
<b>Start Depth</b>	125.00 ft	<b>End Depth</b>	145.00 ft
<b>Diameter</b>	11.50 in	<b>Amount</b>	20.00 ft
<b>Comments</b>			
<b>Date</b>	06/08/1968	<b>Casing Type</b>	Perforated Steel
<b>Start Depth</b>	0.00 ft	<b>End Depth</b>	0.00 ft
<b>Diameter</b>	0.00 in	<b>Amount</b>	0.00 ft
<b>Comments</b>			

## Grout Construction Information

<b>Date</b>	06/08/1968	<b>Grout Type</b>	Cement	<b>Grout Placement</b>	Unknown
<b>Start Depth</b>	0.00 ft	<b>End Depth</b>	160.00 ft		
<b>Comments</b>					

## Log Information

<b>Date</b>	01/06/1969
<b>Log Types</b>	Strip log
<b>Prepared By</b>	Unknown
<b>Comments</b>	

<b>Date</b>	
<b>Log Types</b>	Drillers log
<b>Prepared By</b>	West Branch, City Of
<b>Comments</b>	

## Stratigraphy Information

<b>System</b>	Quaternary
<b>Series</b>	Pleistocene Series

<b>Group</b>	Pre-Illinoian		
<b>Formation</b>			
<b>Member</b>			
<b>Submember</b>			
<b>Start Depth</b>	0.00 ft	<b>End Depth</b>	60.00 ft
<b>Contact Accuracy</b>			
<b>Penetration</b>			
<b>Primary Lithology</b>	Till	<b>Percent</b>	100
<b>Secondary Lithology</b>		<b>Percent</b>	
<b>Tertiary Lithology</b>		<b>Percent</b>	
<b>Comments</b>			

---

<b>System</b>	Devonian		
<b>Series</b>			
<b>Group</b>	Wapsipinicon		
<b>Formation</b>	Pinicon Ridge		
<b>Member</b>			
<b>Submember</b>			
<b>Start Depth</b>	100.00 ft	<b>End Depth</b>	135.00 ft
<b>Contact Accuracy</b>			
<b>Penetration</b>			
<b>Primary Lithology</b>	Limestone	<b>Percent</b>	0
<b>Secondary Lithology</b>	Sandstone	<b>Percent</b>	0
<b>Tertiary Lithology</b>		<b>Percent</b>	
<b>Comments</b>			

---

<b>System</b>	Devonian		
<b>Series</b>			
<b>Group</b>	Wapsipinicon		
<b>Formation</b>	Pinicon Ridge		
<b>Member</b>	Kenwood		
<b>Submember</b>			
<b>Start Depth</b>	135.00 ft	<b>End Depth</b>	150.00 ft
<b>Contact Accuracy</b>			
<b>Penetration</b>			
<b>Primary Lithology</b>	Dolomite	<b>Percent</b>	0
<b>Secondary Lithology</b>	Chert/Chalcedony	<b>Percent</b>	0
<b>Tertiary Lithology</b>	Sandstone	<b>Percent</b>	0
<b>Comments</b>			

---

<b>System</b>	Devonian		
<b>Series</b>			
<b>Group</b>	Wapsipinicon		
<b>Formation</b>	Otis		
<b>Member</b>			
<b>Submember</b>			
<b>Start Depth</b>	150.00 ft	<b>End Depth</b>	160.00 ft
<b>Contact Accuracy</b>			
<b>Penetration</b>			

<b>Primary Lithology</b>	Dolomite	<b>Percent</b>	100
<b>Secondary Lithology</b>		<b>Percent</b>	
<b>Tertiary Lithology</b>		<b>Percent</b>	
<b>Comments</b>			

---

<b>System</b>	Silurian		
<b>Series</b>			
<b>Group</b>			
<b>Formation</b>			
<b>Member</b>			
<b>Submember</b>			
<b>Start Depth</b>	160.00 ft	<b>End Depth</b>	325.00 ft
<b>Contact Accuracy</b>			
<b>Penetration</b>			
<b>Primary Lithology</b>	Dolomite	<b>Percent</b>	100
<b>Secondary Lithology</b>		<b>Percent</b>	
<b>Tertiary Lithology</b>		<b>Percent</b>	
<b>Comments</b>			

---

<b>System</b>	Silurian		
<b>Series</b>			
<b>Group</b>			
<b>Formation</b>	Hopkinton		
<b>Member</b>			
<b>Submember</b>			
<b>Start Depth</b>	325.00 ft	<b>End Depth</b>	415.00 ft
<b>Contact Accuracy</b>			
<b>Penetration</b>			
<b>Primary Lithology</b>	Dolomite	<b>Percent</b>	0
<b>Secondary Lithology</b>	Chert/Chalcedony	<b>Percent</b>	0
<b>Tertiary Lithology</b>		<b>Percent</b>	
<b>Comments</b>			

---

<b>System</b>	Silurian		
<b>Series</b>			
<b>Group</b>			
<b>Formation</b>	Blanding		
<b>Member</b>			
<b>Submember</b>			
<b>Start Depth</b>	415.00 ft	<b>End Depth</b>	440.00 ft
<b>Contact Accuracy</b>			
<b>Penetration</b>			
<b>Primary Lithology</b>	Dolomite	<b>Percent</b>	0
<b>Secondary Lithology</b>	Chert/Chalcedony	<b>Percent</b>	0
<b>Tertiary Lithology</b>		<b>Percent</b>	
<b>Comments</b>			

---

<b>System</b>	Silurian		
<b>Series</b>			

<b>Group</b>			
<b>Formation</b>	Tete Des Morts/Mosalem Undiff.		
<b>Member</b>			
<b>Submember</b>			
<b>Start Depth</b>	440.00 ft	<b>End Depth</b>	445.00 ft
<b>Contact Accuracy</b>			
<b>Penetration</b>			
<b>Primary Lithology</b>	Dolomite	<b>Percent</b>	0
<b>Secondary Lithology</b>	Chert/Chalcedony	<b>Percent</b>	0
<b>Tertiary Lithology</b>	Shale	<b>Percent</b>	0
<b>Comments</b>			

---

<b>System</b>	Ordovician		
<b>Series</b>			
<b>Group</b>			
<b>Formation</b>	Maquoketa		
<b>Member</b>			
<b>Submember</b>			
<b>Start Depth</b>	445.00 ft	<b>End Depth</b>	446.00 ft
<b>Contact Accuracy</b>			
<b>Penetration</b>			
<b>Primary Lithology</b>	Shale	<b>Percent</b>	100
<b>Secondary Lithology</b>		<b>Percent</b>	
<b>Tertiary Lithology</b>		<b>Percent</b>	
<b>Comments</b>			

## Water Production Information

<b>Date</b>	06/08/1968	<b>Start Time</b>	
<b>Aquifer</b>	Unknown		
<b>Static Water Level</b>	92.00 ft	<b>Yield</b>	754 gallons per minute
<b>Pumping Water Level</b>	130 ft	<b>Yield Method</b>	Unknown
<b>Measurement</b>	Unknown	<b>Pump Test</b>	No
<b>Pump Method</b>	Unknown	<b>Duration</b>	0 mins
<b>Comments</b>			

## Chip Storage Information

<b>Date</b>	06/21/1968		
<b>Storage</b>	PL7-441	<b>Bin</b>	
<b>Number of Boxes</b>	1	<b>Number of Samples</b>	69
<b>Sample Intervals</b>	0	<b>Sample Gaps</b>	120-140,345-365
<b>Sample Top</b>	0 ft	<b>Sample Bottom</b>	445 ft
<b>Washed Top</b>	100 ft	<b>Washed Bottom</b>	445 ft
<b>Duplicate Storage</b>			
<b>Comments</b>			

<https://www.ihr.uiowa.edu/igs/geosam/well/20575/general-information>