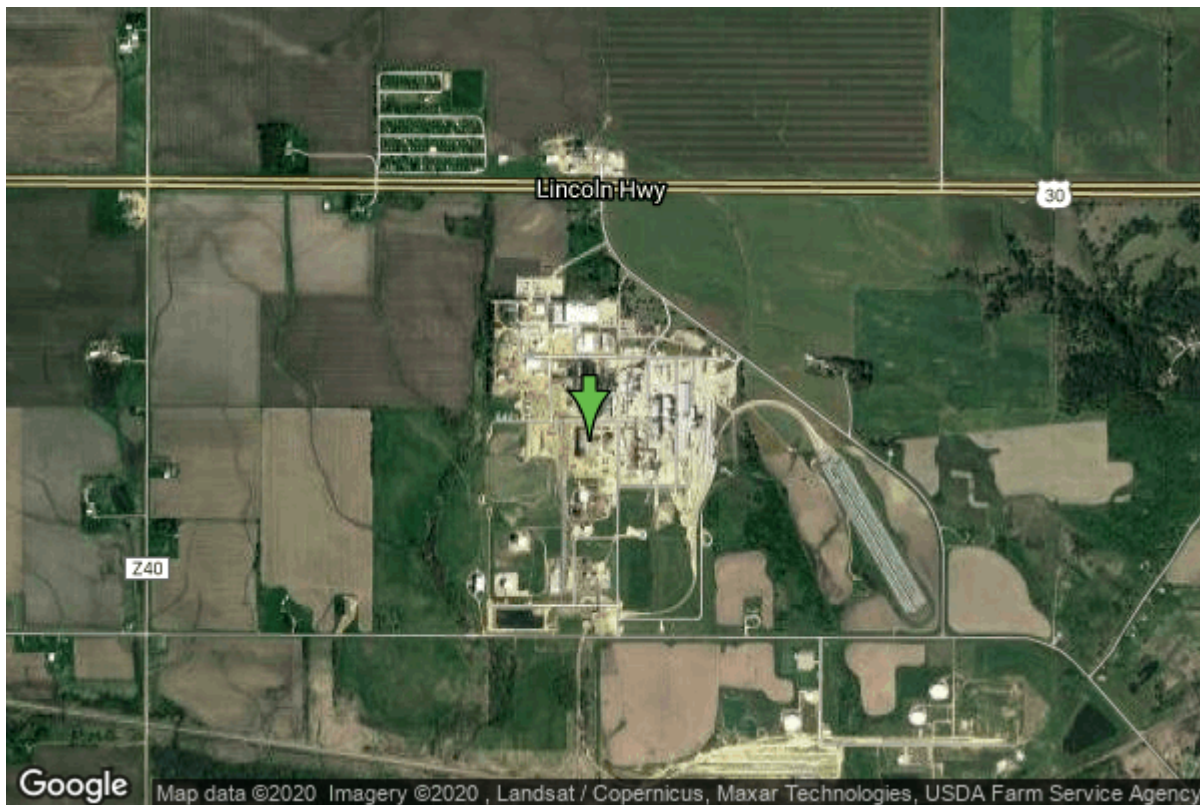


# Well W#21285 Information



<b>Date Received</b>		<b>State</b>	Iowa
<b>Owner Name</b>	Equistar Chemicals, Lp	<b>County</b>	Clinton
<b>Alt Name</b>	CHEMPLEX #4	<b>Quadrangle</b>	Camanche, Iowa-III.
<b>WNumber</b>	21285	<b>Township</b>	T81N
<b>PWTS ID</b>	0	<b>Range</b>	R6E
<b>PWS ID</b>	2326104	<b>Section</b>	20
<b>Storet ID</b>	0	<b>Quarter</b>	SW NW NW
<b>SDWIS ID</b>	2411516	<b>Latitude</b>	41.8071970000
<b>USGS ID</b>	0	<b>Longitude</b>	-90.2962410000
<b>Project</b>	Source Water Protection	<b>Accuracy</b>	
<b>Operator</b>	Unknown	<b>UTM X</b>	724603
		<b>UTM Y</b>	4631904

---

<b>Site Type</b>	Drilled hole	<b>Drilling Company</b>	Layne Western - II.
<b>Well Status</b>	Not Used	<b>Drilling Date</b>	01/01/1968
<b>Field Located</b>	No	<b>Drilling Method</b>	Rotary
<b>Elevation</b>	666 ft	<b>Bedrock Depth</b>	30 ft
<b>Elevation Accuracy</b>	Digital Elevation Model	<b>Well Depth</b>	2546 ft
	Accurate to 5 ft	<b>Total Depth</b>	2546 ft
<b>Landscape Position</b>	Hillside	<b>Well Types</b>	Commercial, Public Supply
		<b>Aquifers</b>	Cambrian (blw St. Lawrence), Cambrian-Ordovician

# Casing Construction Information

<b>Date</b>	01/01/1968	<b>Casing Type</b>	Unknown
<b>Start Depth</b>	0.00 ft	<b>End Depth</b>	0.00 ft
<b>Diameter</b>	20.00 in	<b>Amount</b>	36.00 ft
<b>Comments</b>			

---

<b>Date</b>	01/01/1968	<b>Casing Type</b>	Unknown
<b>Start Depth</b>	0.00 ft	<b>End Depth</b>	0.00 ft
<b>Diameter</b>	16.00 in	<b>Amount</b>	908.00 ft
<b>Comments</b>			

# Log Information

<b>Date</b>	10/07/1968
<b>Log Types</b>	Drillers log
<b>Prepared By</b>	Layne Western - II.
<b>Comments</b>	

---

<b>Date</b>	09/26/1968
<b>Log Types</b>	Pump Test
<b>Prepared By</b>	Layne Western - II.
<b>Comments</b>	

# Chip Storage Information

<b>Date</b>	01/30/1969	<b>Bin</b>	
<b>Storage</b>	PL7-750->755	<b>Number of Samples</b>	508
<b>Number of Boxes</b>	6	<b>Sample Gaps</b>	490-495
<b>Sample Intervals</b>	5	<b>Sample Bottom</b>	2546 ft
<b>Sample Top</b>	0 ft	<b>Washed Bottom</b>	2546 ft
<b>Washed Top</b>	30 ft		
<b>Duplicate Storage</b>			
<b>Comments</b>			

<https://www.iuhr.uiowa.edu/igs/geosam/well/21285/general-information>