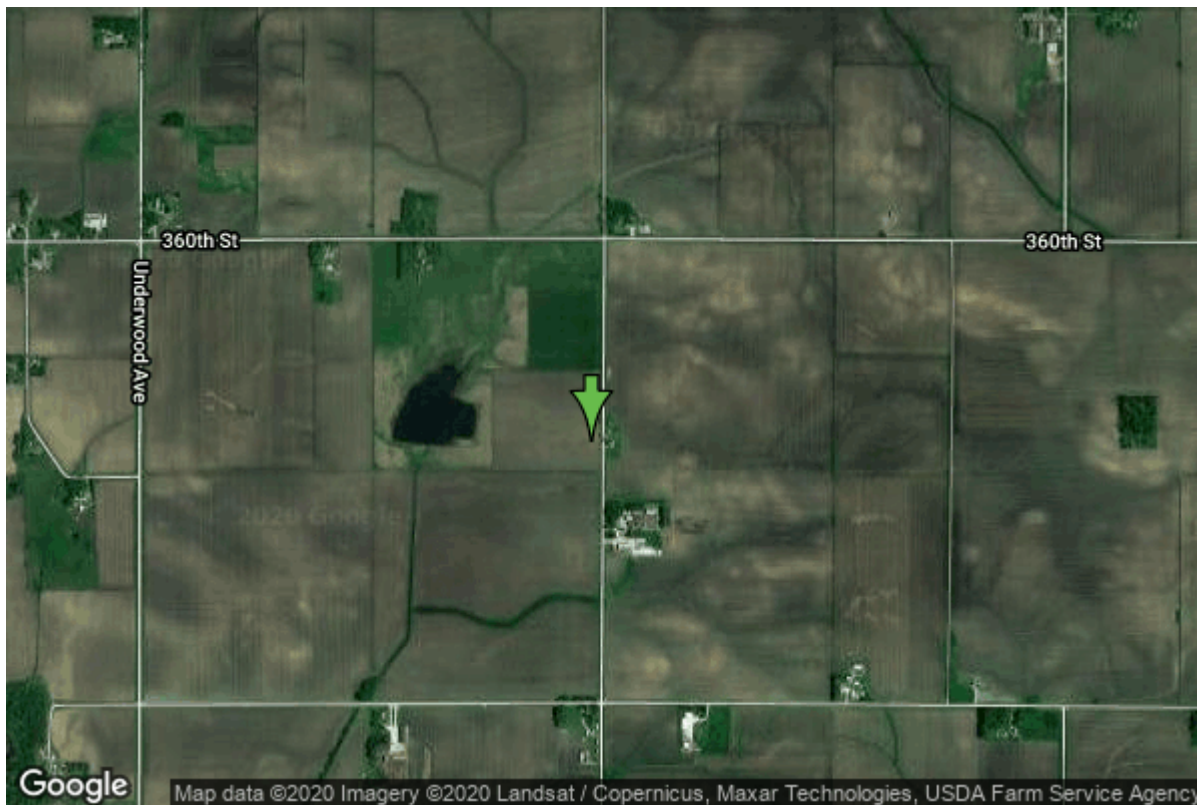


# Well W#22043 Information



<b>Date Received</b>		<b>State</b>	Iowa
<b>Owner Name</b>	Bode, Paul	<b>County</b>	Mitchell
<b>Alt Name</b>		<b>Quadrangle</b>	Riceville, Iowa
<b>WNumber</b>	22043	<b>Township</b>	T98N
<b>PWTS ID</b>	0	<b>Range</b>	R15W
<b>PWS ID</b>	0	<b>Section</b>	27
<b>Storet ID</b>	0	<b>Quarter</b>	NW SW SW
<b>SDWIS ID</b>	0	<b>Latitude</b>	43.2780602000
<b>USGS ID</b>	0	<b>Longitude</b>	-92.6136814000
<b>Project</b>	Unknown	<b>Accuracy</b>	
<b>Operator</b>	Unknown	<b>UTM X</b>	531346
		<b>UTM Y</b>	4791766

<b>Site Type</b>	Drilled hole	<b>Drilling Company</b>	Folgero, Clarence
<b>Well Status</b>	Unknown	<b>Drilling Date</b>	10/10/1969
<b>Field Located</b>	No	<b>Drilling Method</b>	Unknown
<b>Elevation</b>	1161 ft	<b>Bedrock Depth</b>	230 ft
<b>Elevation Accuracy</b>	Topo Map Accurate to 2 ft	<b>Well Depth</b>	270 ft
<b>Landscape Position</b>	Hillside	<b>Total Depth</b>	270 ft
		<b>Well Types</b>	Private
		<b>Aquifers</b>	

## Casing Construction Information

<b>Date</b>	10/10/1969	<b>Casing Type</b>	Unknown
<b>Start Depth</b>	0.00 ft	<b>End Depth</b>	0.00 ft

<b>Diameter</b>	5.00 in	<b>Amount</b>	264.00 ft
<b>Comments</b>			

## Log Information

<b>Date</b>	
<b>Log Types</b>	Drillers log
<b>Prepared By</b>	Folgero, Clarence
<b>Comments</b>	

---

<b>Date</b>	
<b>Log Types</b>	Strip log
<b>Prepared By</b>	Hartsock, Tanner
<b>Comments</b>	

## Stratigraphy Information

<b>System</b>	Quaternary		
<b>Series</b>			
<b>Group</b>			
<b>Formation</b>			
<b>Member</b>			
<b>Submember</b>			
<b>Start Depth</b>	0.00 ft	<b>End Depth</b>	260.00 ft
<b>Contact Accuracy</b>			
<b>Penetration</b>			
<b>Primary Lithology</b>	Till - Unoxidized And Unleached	<b>Percent</b>	90
<b>Secondary Lithology</b>	Sand And Gravel	<b>Percent</b>	10
<b>Tertiary Lithology</b>		<b>Percent</b>	
<b>Comments</b>			

---

<b>System</b>	Devonian		
<b>Series</b>			
<b>Group</b>	Wapsipinicon		
<b>Formation</b>	Spillville		
<b>Member</b>			
<b>Submember</b>			
<b>Start Depth</b>	260.00 ft	<b>End Depth</b>	270.00 ft
<b>Contact Accuracy</b>			
<b>Penetration</b>			
<b>Primary Lithology</b>	Dolomite	<b>Percent</b>	100
<b>Secondary Lithology</b>		<b>Percent</b>	
<b>Tertiary Lithology</b>		<b>Percent</b>	
<b>Comments</b>			

# Water Production Information

<b>Date</b>		<b>Start Time</b>	
<b>Aquifer</b>			
<b>Static Water Level</b>	43.00 ft	<b>Yield</b>	11 gallons per minute
<b>Pumping Water Level</b>	43 ft	<b>Yield Method</b>	
<b>Measurement</b>		<b>Pump Test</b>	No
<b>Pump Method</b>		<b>Duration</b>	0 mins
<b>Comments</b>			

# Chip Storage Information

<b>Date</b>	01/16/1970		
<b>Storage</b>	PL8-131	<b>Bin</b>	
<b>Number of Boxes</b>	1	<b>Number of Samples</b>	48
<b>Sample Intervals</b>	0	<b>Sample Gaps</b>	
<b>Sample Top</b>	0 ft	<b>Sample Bottom</b>	270 ft
<b>Washed Top</b>	230 ft	<b>Washed Bottom</b>	270 ft
<b>Duplicate Storage</b>			
<b>Comments</b>			

<https://www.ihr.uiowa.edu/igs/geosam/well/22043/general-information>