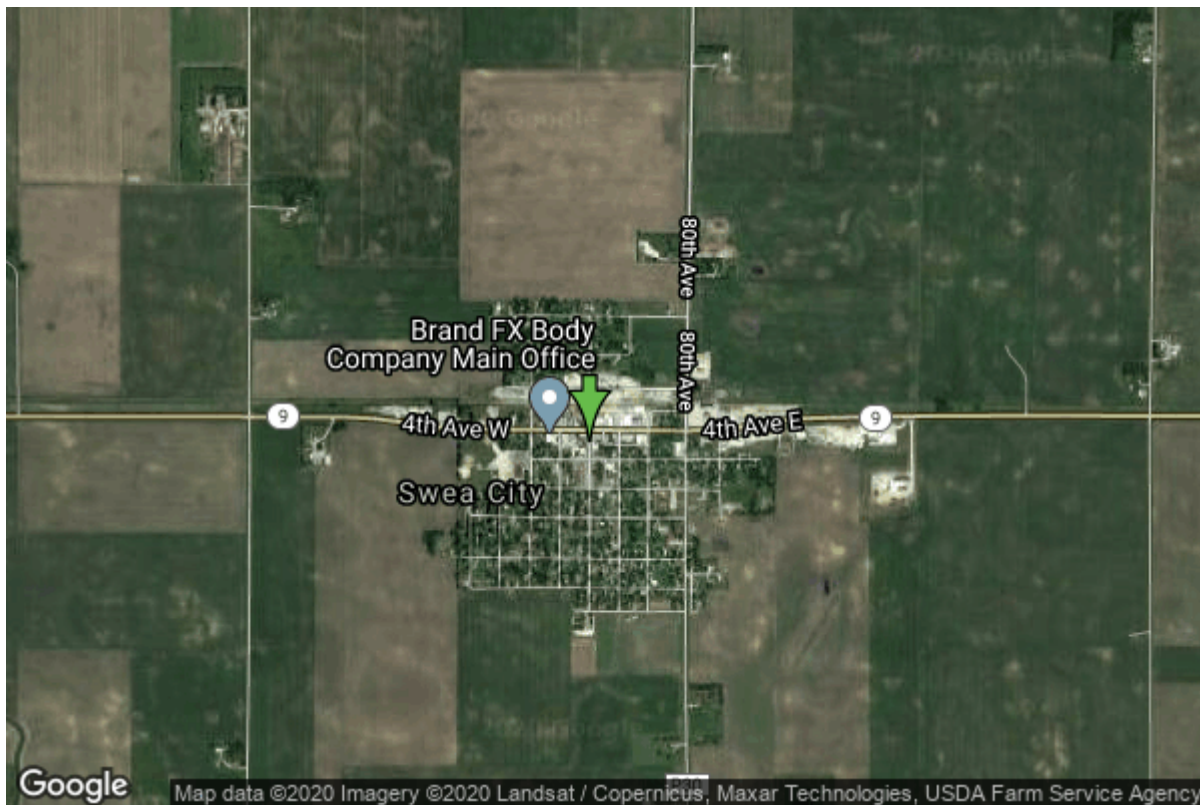


Well W#2217 Information



Date Received		State	Iowa
Owner Name	Swea City, City Of	County	Kossuth
Alt Name	#1	Quadrangle	Swea City, Iowa
WNumber	2217	Township	T99N
PWTS ID	0	Range	R29W
PWS ID	5584009	Section	19
Storet ID	0	Quarter	NE NE NW
SDWIS ID	2409268	Latitude	43.3846000000
USGS ID	0	Longitude	-94.3091500000
Project	Source Water Protection	Accuracy	
Operator	Unknown	UTM X	393961
		UTM Y	4804358

Site Type	Drilled hole	Drilling Company	Scharff Well Drilling
Well Status	Standby	Drilling Date	01/01/1945
Field Located	No	Drilling Method	Unknown
Elevation	1180 ft	Bedrock Depth	0 ft
Elevation Accuracy	Digital Elevation Model Accurate to 5 ft	Well Depth	471 ft
Landscape Position	Unknown	Total Depth	270 ft
		Well Types	Municipal, Public Supply
		Aquifers	Ordovician

Log Information

Date	
Log Types	Unknown

Prepared By Unknown
Comments

Date
Log Types Strip log
Prepared By Unknown
Comments

Stratigraphy Information

System Quaternary
Series
Group
Formation
Member
Submember
Start Depth 0.00 ft **End Depth** 10.00 ft
Contact Accuracy
Penetration
Primary Lithology **Percent**
Secondary Lithology **Percent**
Tertiary Lithology **Percent**
Comments

System Quaternary
Series Pleistocene Series
Group Wisconsinan Episode
Formation Dows
Member
Submember
Start Depth 10.00 ft **End Depth** 60.00 ft
Contact Accuracy
Penetration
Primary Lithology Till - Unoxidized And Unleached **Percent** 100
Secondary Lithology Unknown **Percent** 0
Tertiary Lithology Unknown **Percent** 0
Comments

System Quaternary
Series Pleistocene Series
Group Wisconsinan Episode
Formation Dows
Member
Submember
Start Depth 60.00 ft **End Depth** 80.00 ft
Contact Accuracy
Penetration

Primary Lithology	Sand And Gravel	Percent	100
Secondary Lithology		Percent	
Tertiary Lithology		Percent	
Comments			

System	Quaternary		
Series	Pleistocene Series		
Group			
Formation			
Member			
Submember			
Start Depth	80.00 ft	End Depth	90.00 ft
Contact Accuracy			
Penetration			
Primary Lithology	Sand And Gravel	Percent	90
Secondary Lithology	Till - Unoxidized And Unleached	Percent	10
Tertiary Lithology		Percent	
Comments			

System	Quaternary		
Series	Pleistocene Series		
Group			
Formation			
Member			
Submember			
Start Depth	90.00 ft	End Depth	100.00 ft
Contact Accuracy			
Penetration			
Primary Lithology	Till - Unoxidized And Unleached	Percent	100
Secondary Lithology		Percent	
Tertiary Lithology		Percent	
Comments			

System	Quaternary		
Series	Pleistocene Series		
Group			
Formation			
Member			
Submember			
Start Depth	100.00 ft	End Depth	130.00 ft
Contact Accuracy			
Penetration			
Primary Lithology	Sand And Gravel	Percent	85
Secondary Lithology	Till - Unoxidized And Unleached	Percent	15
Tertiary Lithology		Percent	
Comments			

System	Cretaceous		
Series			
Group	Fort Benton ("Lower Colorado ")		
Formation	Dakota		
Member	Woodbury		
Submember			
Start Depth	130.00 ft	End Depth	190.00 ft
Contact Accuracy			
Penetration			
Primary Lithology	Shale	Percent	0
Secondary Lithology	Coal	Percent	0
Tertiary Lithology		Percent	
Comments			

System	Ordovician		
Series			
Group			
Formation	Maquoketa		
Member			
Submember			
Start Depth	190.00 ft	End Depth	270.00 ft
Contact Accuracy			
Penetration			
Primary Lithology	Dolomite	Percent	0
Secondary Lithology	Chert/Chalcedony	Percent	0
Tertiary Lithology	Sandstone	Percent	0
Comments			

Chip Storage Information

Date			
Storage	WN3-3	Bin	
Number of Boxes	1	Number of Samples	22
Sample Intervals	0	Sample Gaps	0-10, 140-200
Sample Top	10 ft	Sample Bottom	270 ft
Washed Top	200 ft	Washed Bottom	270 ft
Duplicate Storage			
Comments			

<https://www.iuhr.uiowa.edu/igs/geosam/well/2217/general-information>