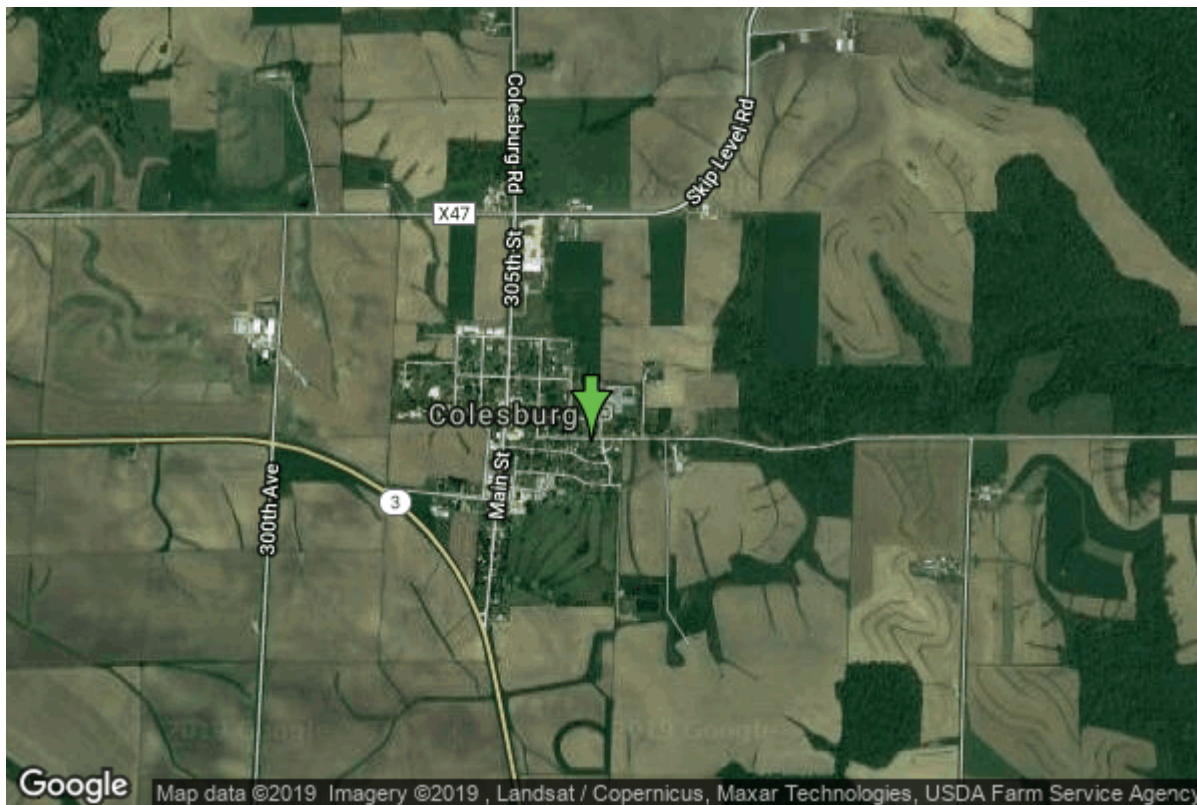


Well W#22756 Information



Date Received		State	Iowa
Owner Name	Colesburg, City Of	County	Delaware
Alt Name	#4	Quadrangle	Colesburg, Iowa
WNumber	22756	Township	T90N
PWTS ID	0	Range	R3W
PWS ID	2809055	Section	4
Storet ID	0	Quarter	SE NW NE
SDWIS ID	2407286	Latitude	42.6385600000
USGS ID	0	Longitude	-91.1975700000
Project	Source Water Protection	Accuracy	
Operator	Unknown	UTM X	647773
		UTM Y	4722253

Site Type	Drilled hole	Drilling Company	Nelson Bros.
Well Status	Active	Drilling Date	11/01/1971
Field Located	No	Drilling Method	Rotary
Elevation	1160 ft	Bedrock Depth	15 ft
Elevation Accuracy	Digital Elevation Model Accurate to 5 ft	Well Depth	1250 ft
Landscape Position	Upland	Total Depth	1250 ft
		Well Types	Municipal, Public Supply
		Aquifers	Cambrian-Ordovician

Casing Construction Information

Date	01/01/1971	Casing Type	Steel
Start Depth	0.00 ft	End Depth	0.00 ft

Diameter	10.00 in	Amount	87.00 ft
Comments			

Date	01/01/1971	Casing Type	Steel
Start Depth	0.00 ft	End Depth	0.00 ft
Diameter	7.00 in	Amount	817.00 ft
Comments			

Pump Construction Information

Date	01/01/1971	Pump Type	Submersible
Diameter	0.00 in	Rating	0
Depth Intake	783.00 ft		
Comments			

Log Information

Date	08/08/1972
Log Types	Strip log
Prepared By	Unknown
Comments	

Stratigraphy Information

System	Quaternary		
Series	Holocene Series		
Group			
Formation	Deforest		
Member			
Submember			
Start Depth	0.00 ft	End Depth	2.00 ft
Contact Accuracy			
Penetration			
Primary Lithology	Soil Or Fill	Percent	100
Secondary Lithology		Percent	
Tertiary Lithology		Percent	
Comments			

System	Quaternary		
Series	Pleistocene Series		
Group	Wisconsinan Episode		
Formation	Peoria		
Member			
Submember			
Start Depth	2.00 ft	End Depth	15.00 ft
Contact Accuracy			

Penetration			
Primary Lithology	Loess	Percent	100
Secondary Lithology		Percent	
Tertiary Lithology		Percent	
Comments			

System	Silurian		
Series			
Group			
Formation	Hopkinton		
Member			
Submember			
Start Depth	15.00 ft	End Depth	120.00 ft
Contact Accuracy			
Penetration			
Primary Lithology	Dolomite	Percent	0
Secondary Lithology	Chert/Chalcedony	Percent	0
Tertiary Lithology		Percent	
Comments			

System	Silurian		
Series			
Group			
Formation	Blanding		
Member			
Submember			
Start Depth	120.00 ft	End Depth	145.00 ft
Contact Accuracy			
Penetration			
Primary Lithology	Dolomite	Percent	0
Secondary Lithology	Chert/Chalcedony	Percent	0
Tertiary Lithology		Percent	
Comments			

System	Silurian		
Series			
Group			
Formation	Tete Des Morts/Mosalem Undiff.		
Member			
Submember			
Start Depth	145.00 ft	End Depth	242.00 ft
Contact Accuracy			
Penetration			
Primary Lithology	Dolomite	Percent	0
Secondary Lithology	Shale	Percent	0
Tertiary Lithology		Percent	
Comments			

System	Ordovician		
---------------	------------	--	--

Series
Group
Formation Maquoketa
Member Brainard Shale
Submember
Start Depth 242.00 ft **End Depth** 370.00 ft
Contact Accuracy
Penetration
Primary Lithology Shale **Percent** 0
Secondary Lithology Dolomite **Percent** 0
Tertiary Lithology **Percent**
Comments

System Ordovician
Series
Group
Formation Maquoketa
Member Ft. Atkinson Limestone
Submember
Start Depth 370.00 ft **End Depth** 400.00 ft
Contact Accuracy
Penetration
Primary Lithology Dolomite **Percent** 0
Secondary Lithology Chert/Chalcedony **Percent** 0
Tertiary Lithology **Percent**
Comments

System Ordovician
Series
Group
Formation Maquoketa
Member Clermont Shale
Submember
Start Depth 400.00 ft **End Depth** 420.00 ft
Contact Accuracy
Penetration
Primary Lithology Shale **Percent** 0
Secondary Lithology Dolomite **Percent** 0
Tertiary Lithology **Percent**
Comments

System Ordovician
Series
Group
Formation Maquoketa
Member Elgin Limestone
Submember
Start Depth 420.00 ft **End Depth** 451.00 ft
Contact Accuracy

Penetration			
Primary Lithology	Dolomite	Percent	0
Secondary Lithology	Shale	Percent	0
Tertiary Lithology		Percent	
Comments			

System	Ordovician		
Series			
Group	Galena		
Formation	Dubuque		
Member			
Submember			
Start Depth	451.00 ft	End Depth	500.00 ft
Contact Accuracy			
Penetration			
Primary Lithology	Dolomite	Percent	100
Secondary Lithology		Percent	
Tertiary Lithology		Percent	
Comments			

System	Ordovician		
Series			
Group	Galena		
Formation	Wise Lake		
Member			
Submember			
Start Depth	500.00 ft	End Depth	570.00 ft
Contact Accuracy			
Penetration			
Primary Lithology	Dolomite	Percent	100
Secondary Lithology		Percent	
Tertiary Lithology		Percent	
Comments			

System	Ordovician		
Series			
Group	Galena		
Formation	Dunleith		
Member			
Submember			
Start Depth	570.00 ft	End Depth	685.00 ft
Contact Accuracy			
Penetration			
Primary Lithology	Ls/Dol Mixed	Percent	0
Secondary Lithology	Chert/Chalcedony	Percent	0
Tertiary Lithology		Percent	
Comments			

System	Ordovician		
---------------	------------	--	--

Series			
Group	Galena		
Formation	Decorah		
Member			
Submember			
Start Depth	685.00 ft	End Depth	710.00 ft
Contact Accuracy			
Penetration			
Primary Lithology	Ls/Dol Mixed	Percent	0
Secondary Lithology	Shale	Percent	0
Tertiary Lithology		Percent	
Comments			

System	Ordovician		
Series			
Group	Galena		
Formation	Decorah		
Member	Spechts Ferry		
Submember			
Start Depth	710.00 ft	End Depth	715.00 ft
Contact Accuracy			
Penetration			
Primary Lithology	Shale	Percent	0
Secondary Lithology	Dolomite	Percent	0
Tertiary Lithology		Percent	
Comments			

System	Ordovician		
Series			
Group	Galena		
Formation	Platteville		
Member			
Submember			
Start Depth	715.00 ft	End Depth	765.00 ft
Contact Accuracy			
Penetration			
Primary Lithology	Ls/Dol Mixed	Percent	100
Secondary Lithology		Percent	
Tertiary Lithology		Percent	
Comments			

System	Ordovician		
Series			
Group	Ancell		
Formation	Glenwood		
Member			
Submember			
Start Depth	765.00 ft	End Depth	770.00 ft
Contact Accuracy			

Penetration			
Primary Lithology	Shale	Percent	100
Secondary Lithology		Percent	
Tertiary Lithology		Percent	
Comments			

System	Ordovician		
Series			
Group	Ancell		
Formation	St. Peter Sandstone		
Member			
Submember			
Start Depth	770.00 ft	End Depth	800.00 ft
Contact Accuracy			
Penetration			
Primary Lithology	Sandstone	Percent	100
Secondary Lithology		Percent	
Tertiary Lithology		Percent	
Comments			

System	Ordovician		
Series			
Group	Prairie Du Chien		
Formation	Shakopee		
Member			
Submember			
Start Depth	800.00 ft	End Depth	955.00 ft
Contact Accuracy			
Penetration			
Primary Lithology	Dolomite	Percent	0
Secondary Lithology	Sandstone	Percent	0
Tertiary Lithology	Chert/Chalcedony	Percent	0
Comments			

System	Ordovician		
Series			
Group	Prairie Du Chien		
Formation	Oneota		
Member			
Submember			
Start Depth	955.00 ft	End Depth	1140.00 ft
Contact Accuracy			
Penetration			
Primary Lithology	Dolomite	Percent	0
Secondary Lithology	Chert/Chalcedony	Percent	0
Tertiary Lithology		Percent	
Comments			

System	Cambrian		
---------------	----------	--	--

Series			
Group			
Formation	Jordan		
Member			
Submember			
Start Depth	1140.00 ft	End Depth	1240.00 ft
Contact Accuracy			
Penetration			
Primary Lithology	Sandstone	Percent	0
Secondary Lithology	Dolomite	Percent	0
Tertiary Lithology		Percent	
Comments			

System	Cambrian		
Series			
Group			
Formation	St. Lawrence		
Member			
Submember			
Start Depth	1240.00 ft	End Depth	1250.00 ft
Contact Accuracy			
Penetration			
Primary Lithology	Sandstone	Percent	0
Secondary Lithology	Dolomite	Percent	0
Tertiary Lithology		Percent	
Comments			

Water Production Information

Date	08/01/2014	Start Time	
Aquifer			
Static Water Level	523.00 ft	Yield	0 gallons per minute
Pumping Water Level	552 ft	Yield Method	Unknown
Measurement	Unknown	Pump Test	No
Pump Method	Unknown	Duration	0 mins
Comments	Water levels taken from DNR Jordan questionnaire.		

Date	01/01/1971	Start Time	
Aquifer	Unknown		
Static Water Level	0.00 ft	Yield	120 gallons per minute
Pumping Water Level	800 ft	Yield Method	Unknown
Measurement	Unknown	Pump Test	Yes
Pump Method	Unknown	Duration	0 mins
Comments			

Chip Storage Information

Date	03/11/1971	Bin	
Storage	PL8-522->524	Number of Samples	249
Number of Boxes	3	Sample Gaps	
Sample Intervals	5	Sample Bottom	1250 ft
Sample Top	0 ft	Washed Bottom	1250 ft
Washed Top	15 ft		
Duplicate Storage			
Comments			

<https://www.iihr.uiowa.edu/igs/geosam/well/22756/general-information>