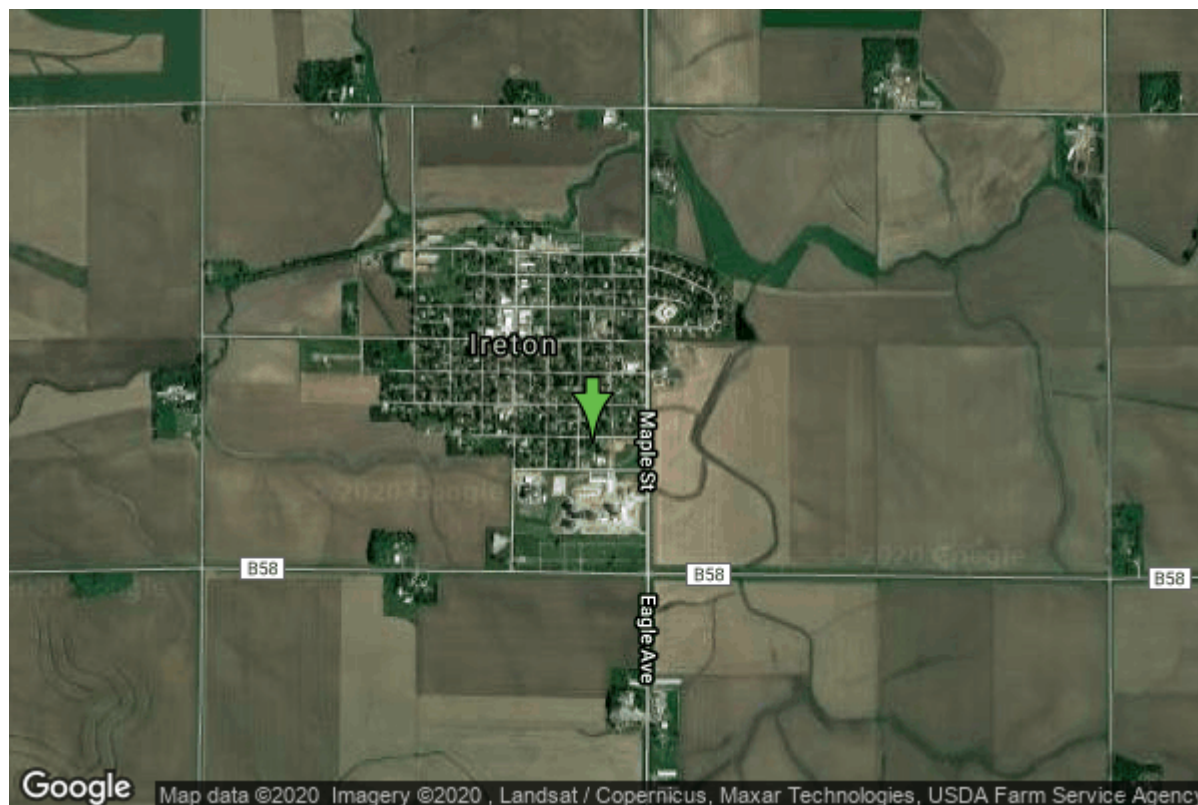


Well W#2310 Information



Date Received		State	Iowa
Owner Name	Ireton, City Of	County	Sioux
Alt Name	#3	Quadrangle	Ireton, Iowa
WNumber	2310	Township	T94N
PWTS ID	0	Range	R46W
PWS ID	8447098	Section	7
Storet ID	0	Quarter	SE NE SE
SDWIS ID	2408251	Latitude	42.9715700000
USGS ID	0	Longitude	-96.3142600000
Project	Source Water Protection	Accuracy	
Operator	Unknown	UTM X	229725
		UTM Y	4762989

Site Type	Drilled hole	Drilling Company	Rasmussen, Carrol
Well Status	Standby	Drilling Date	04/01/1946
Field Located	No	Drilling Method	Unknown
Elevation	1430 ft	Bedrock Depth	215 ft
Elevation Accuracy	Digital Elevation Model Accurate to 5 ft	Well Depth	543 ft
Landscape Position	Unknown	Total Depth	543 ft
		Well Types	Municipal, Public Supply
		Aquifers	Dakota/Cretaceous

Casing Construction Information

Date	02/01/1946	Casing Type	Steel
Start Depth	-1.00 ft	End Depth	266.70 ft

Diameter	8.00 in	Amount	267.70 ft
Comments			

Date	02/01/1946	Casing Type	Steel
Start Depth	260.70 ft	End Depth	503.00 ft
Diameter	6.00 in	Amount	242.30 ft
Comments			

Log Information

Date	
Log Types	Unknown
Prepared By	Unknown
Comments	

Date	
Log Types	Strip log
Prepared By	Unknown
Comments	

Stratigraphy Information

System	Quaternary		
Series	Pleistocene Series		
Group	Wisconsinan Episode		
Formation	Peoria		
Member			
Submember			
Start Depth	0.00 ft	End Depth	10.00 ft
Contact Accuracy			
Penetration			
Primary Lithology	Loess	Percent	100
Secondary Lithology	Unknown	Percent	0
Tertiary Lithology	Unknown	Percent	0
Comments			

System	Quaternary		
Series	Pleistocene Series		
Group	Pre-Illinoian		
Formation			
Member			
Submember			
Start Depth	10.00 ft	End Depth	60.00 ft
Contact Accuracy			
Penetration			
Primary Lithology	Till - Oxidized And Unleached	Percent	100

Secondary Lithology	Unknown	Percent	0
Tertiary Lithology	Unknown	Percent	0
Comments			

System	Quaternary		
Series	Pleistocene Series		
Group	Pre-Illinoian		
Formation			
Member			
Submember			
Start Depth	60.00 ft	End Depth	125.00 ft
Contact Accuracy			
Penetration			
Primary Lithology	Till - Unoxidized And Unleached	Percent	100
Secondary Lithology	Unknown	Percent	0
Tertiary Lithology	Unknown	Percent	0
Comments			

System	Quaternary		
Series	Pleistocene Series		
Group	Pre-Illinoian		
Formation			
Member			
Submember			
Start Depth	125.00 ft	End Depth	130.00 ft
Contact Accuracy			
Penetration			
Primary Lithology	Sand	Percent	100
Secondary Lithology		Percent	
Tertiary Lithology		Percent	
Comments			

System	Quaternary		
Series	Pleistocene Series		
Group	Pre-Illinoian		
Formation			
Member			
Submember			
Start Depth	130.00 ft	End Depth	185.00 ft
Contact Accuracy			
Penetration			
Primary Lithology	Till - Unoxidized And Unleached	Percent	100
Secondary Lithology		Percent	
Tertiary Lithology		Percent	
Comments			

System	Quaternary		
---------------	------------	--	--

Series Pleistocene Series
Group Pre-Illinoian
Formation
Member
Submember
Start Depth 185.00 ft **End Depth** 215.00 ft
Contact Accuracy
Penetration
Primary Lithology Clay **Percent** 65
Secondary Lithology Sand **Percent** 35
Tertiary Lithology Unknown **Percent** 0
Comments

System Cretaceous
Series
Group Fort Benton ("Lower Colorado ")
Formation Carlile Shale
Member
Submember
Start Depth 215.00 ft **End Depth** 280.00 ft
Contact Accuracy
Penetration
Primary Lithology Shale **Percent** 100
Secondary Lithology **Percent**
Tertiary Lithology **Percent**
Comments

System Cretaceous
Series
Group Fort Benton ("Lower Colorado ")
Formation Greenhorn Limestone
Member
Submember
Start Depth 280.00 ft **End Depth** 305.00 ft
Contact Accuracy
Penetration
Primary Lithology Limestone **Percent** 0
Secondary Lithology Shale **Percent** 0
Tertiary Lithology **Percent**
Comments

System Cretaceous
Series
Group Fort Benton ("Lower Colorado ")
Formation Graneros Shale
Member
Submember
Start Depth 305.00 ft **End Depth** 335.00 ft
Contact Accuracy

Penetration			
Primary Lithology	Shale	Percent	100
Secondary Lithology		Percent	
Tertiary Lithology		Percent	
Comments			

System	Cretaceous		
Series			
Group	Fort Benton ("Lower Colorado ")		
Formation	Dakota		
Member	Woodbury		
Submember			
Start Depth	335.00 ft	End Depth	500.00 ft
Contact Accuracy			
Penetration			
Primary Lithology	Sandstone	Percent	0
Secondary Lithology	Shale	Percent	0
Tertiary Lithology		Percent	
Comments			

System	Cretaceous		
Series			
Group	Fort Benton ("Lower Colorado ")		
Formation	Dakota		
Member	Nishnabotna		
Submember			
Start Depth	500.00 ft	End Depth	543.00 ft
Contact Accuracy			
Penetration			
Primary Lithology	Sandstone	Percent	100
Secondary Lithology		Percent	
Tertiary Lithology		Percent	
Comments			

Water Production Information

Date	02/01/1946	Start Time	
Aquifer	Unknown		
Static Water Level	264.00 ft	Yield	80 gallons per minute
Pumping Water Level	290 ft	Yield Method	Unknown
Measurement	Unknown	Pump Test	Yes
Pump Method	Unknown	Duration	0 mins
Comments			

Chip Storage Information

Date		Bin	
Storage	WN8-8,9	Number of Samples	109
Number of Boxes	2	Sample Gaps	
Sample Intervals	0	Sample Bottom	543 ft
Sample Top	0 ft	Washed Bottom	0 ft
Washed Top	0 ft		
Duplicate Storage			
Comments			

<https://www.iihr.uiowa.edu/igs/geosam/well/2310/general-information>