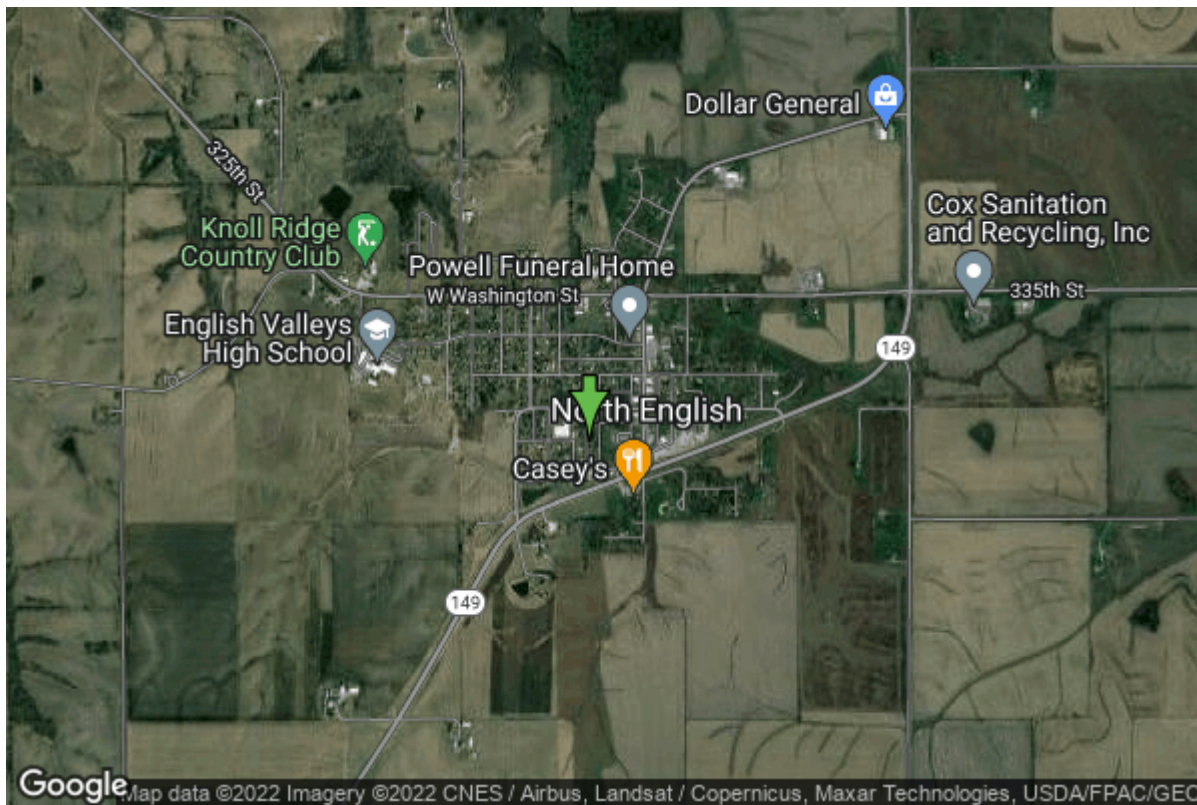


Well W#23110 Information



Date Received	01/01/1972	State	Iowa
Owner Name	North English, City Of	County	Iowa
Alt Name	#2	Quadrangle	North English, Iowa
WNumber	23110	Township	T78N
PWTS ID	0	Range	R11W
PWS ID	4858070	Section	36
Storet ID	0	Quarter	SW SE NW
SDWIS ID	2409071	Latitude	41.5128650000
USGS ID	0	Longitude	-92.0780730000
Project	Source Water Protection	Accuracy	
Operator	Unknown	UTM X	576932
		UTM Y	4596103

Site Type	Drilled hole	Drilling Company	Varner Well Co.
Well Status	Active	Drilling Date	03/01/1972
Field Located	No	Drilling Method	Rotary
Elevation	801 ft	Bedrock Depth	0 ft
Elevation Accuracy	Digital Elevation Model Accurate to 5 ft	Well Depth	1942 ft
Landscape Position	Unknown	Total Depth	1942 ft
		Well Types	Municipal, Public Supply
		Aquifers	Cambrian-Ordovician

Casing Construction Information

Date	02/29/1972	Casing Type	Steel
Start Depth	0.00 ft	End Depth	0.00 ft

Diameter	24.00 in	Amount	160.00 ft
-----------------	----------	---------------	-----------

Comments

Date	02/29/1972	Casing Type	Steel
Start Depth	0.00 ft	End Depth	1590.00 ft
Diameter	13.38 in	Amount	1590.00 ft

Comments

Log Information

Date	03/01/1984
Log Types	Strip log
Prepared By	Unknown

Comments

Date	
Log Types	Unknown
Prepared By	

Comments

Stratigraphy Information

System	Quaternary		
Series			
Group			
Formation			
Member			
Submember			
Start Depth	0.00 ft	End Depth	5.00 ft
Contact Accuracy			
Penetration			
Primary Lithology	Soil Or Fill	Percent	100
Secondary Lithology		Percent	
Tertiary Lithology		Percent	

Comments

System	Quaternary		
Series	Pleistocene Series		
Group			
Formation			
Member			
Submember			
Start Depth	5.00 ft	End Depth	225.00 ft
Contact Accuracy			
Penetration			
Primary Lithology	Sand	Percent	100
Secondary Lithology		Percent	

Tertiary Lithology	Percent		
Comments			
System	Devonian		
Series			
Group	Yellow Spring (New Albany)		
Formation	Maple Mill		
Member	English River		
Submember			
Start Depth	225.00 ft	End Depth	245.00 ft
Contact Accuracy			
Penetration			
Primary Lithology	Siltstone	Percent	100
Secondary Lithology		Percent	
Tertiary Lithology		Percent	
Comments			
System	Devonian		
Series			
Group	Yellow Spring (New Albany)		
Formation	Maple Mill		
Member			
Submember			
Start Depth	245.00 ft	End Depth	305.00 ft
Contact Accuracy			
Penetration			
Primary Lithology	Shale	Percent	100
Secondary Lithology		Percent	
Tertiary Lithology		Percent	
Comments			
System	Devonian		
Series			
Group	Yellow Spring (New Albany)		
Formation	Sheffield		
Member			
Submember			
Start Depth	305.00 ft	End Depth	482.00 ft
Contact Accuracy			
Penetration			
Primary Lithology		Percent	
Secondary Lithology		Percent	
Tertiary Lithology		Percent	
Comments			
System	Devonian		
Series			
Group	Yellow Spring (New Albany)		
Formation	Lime Creek		

Member			
Submember			
Start Depth	482.00 ft	End Depth	610.00 ft
Contact Accuracy			
Penetration			
Primary Lithology		Percent	
Secondary Lithology		Percent	
Tertiary Lithology		Percent	
Comments			

System	Unknown		
Series			
Group			
Formation			
Member			
Submember			
Start Depth	610.00 ft	End Depth	650.00 ft
Contact Accuracy			
Penetration			
Primary Lithology		Percent	
Secondary Lithology		Percent	
Tertiary Lithology		Percent	
Comments			

System	Devonian		
Series			
Group	Cedar Valley		
Formation	Little Cedar		
Member	Solon		
Submember			
Start Depth	650.00 ft	End Depth	712.00 ft
Contact Accuracy			
Penetration			
Primary Lithology		Percent	
Secondary Lithology		Percent	
Tertiary Lithology		Percent	
Comments			

System	Devonian		
Series			
Group	Wapsipinicon		
Formation			
Member			
Submember			
Start Depth	712.00 ft	End Depth	760.00 ft
Contact Accuracy			
Penetration			
Primary Lithology	Dolomite	Percent	0
Secondary Lithology	Limestone	Percent	0

Tertiary Lithology	Shale	Percent	0
Comments			
System	Silurian		
Series			
Group			
Formation			
Member			
Submember			
Start Depth	760.00 ft	End Depth	794.00 ft
Contact Accuracy			
Penetration			
Primary Lithology	Chert/Chalcedony	Percent	0
Secondary Lithology	Dolomite	Percent	0
Tertiary Lithology		Percent	
Comments			
System	Ordovician		
Series			
Group			
Formation	Maquoketa		
Member			
Submember			
Start Depth	794.00 ft	End Depth	1030.00 ft
Contact Accuracy			
Penetration			
Primary Lithology	Dolomite	Percent	0
Secondary Lithology	Shale	Percent	0
Tertiary Lithology		Percent	
Comments			
System	Unknown		
Series			
Group			
Formation			
Member			
Submember			
Start Depth	1030.00 ft	End Depth	1110.00 ft
Contact Accuracy			
Penetration			
Primary Lithology	Dolomite	Percent	0
Secondary Lithology	Chert/Chalcedony	Percent	0
Tertiary Lithology		Percent	
Comments			
System	Ordovician		
Series			
Group	Galena		
Formation	Dunleith		

Member			
Submember			
Start Depth	1110.00 ft	End Depth	1230.00 ft
Contact Accuracy			
Penetration			
Primary Lithology	Dolomite	Percent	0
Secondary Lithology	Chert/Chalcedony	Percent	0
Tertiary Lithology		Percent	
Comments			

System	Ordovician		
Series			
Group	Galena		
Formation	Decorah/Platteville Undiff.		
Member			
Submember			
Start Depth	1230.00 ft	End Depth	1306.00 ft
Contact Accuracy			
Penetration			
Primary Lithology	Dolomite	Percent	0
Secondary Lithology	Shale	Percent	0
Tertiary Lithology	Sandstone	Percent	0
Comments			

System	Ordovician		
Series			
Group	Ancell		
Formation	St. Peter Sandstone		
Member			
Submember			
Start Depth	1306.00 ft	End Depth	1340.00 ft
Contact Accuracy			
Penetration			
Primary Lithology	Sandstone	Percent	100
Secondary Lithology		Percent	
Tertiary Lithology		Percent	
Comments			

System	Ordovician		
Series			
Group	Prairie Du Chien		
Formation	Shakopee		
Member	Willow River		
Submember			
Start Depth	1340.00 ft	End Depth	1525.00 ft
Contact Accuracy			
Penetration			
Primary Lithology	Dolomite	Percent	0
Secondary Lithology	Sandstone	Percent	0

Tertiary Lithology	Chert/Chalcedony	Percent	0
Comments			
System	Ordovician		
Series			
Group	Prairie Du Chien		
Formation	Shakopee		
Member	New Richmond		
Submember			
Start Depth	1525.00 ft	End Depth	1590.00 ft
Contact Accuracy			
Penetration			
Primary Lithology	Dolomite	Percent	0
Secondary Lithology	Sandstone	Percent	0
Tertiary Lithology		Percent	
Comments			
System	Ordovician		
Series			
Group	Prairie Du Chien		
Formation	Oneota		
Member			
Submember			
Start Depth	1590.00 ft	End Depth	1802.00 ft
Contact Accuracy			
Penetration			
Primary Lithology	Dolomite	Percent	0
Secondary Lithology	Chert/Chalcedony	Percent	0
Tertiary Lithology		Percent	
Comments			
System	Cambrian		
Series			
Group			
Formation	Jordan		
Member			
Submember			
Start Depth	1802.00 ft	End Depth	1882.00 ft
Contact Accuracy			
Penetration			
Primary Lithology	Sandstone	Percent	0
Secondary Lithology	Dolomite	Percent	0
Tertiary Lithology		Percent	
Comments			
System	Cambrian		
Series			
Group			
Formation	St. Lawrence		

Member			
Submember			
Start Depth	1882.00 ft	End Depth	1940.00 ft
Contact Accuracy			
Penetration			
Primary Lithology	Dolomite	Percent	0
Secondary Lithology	Sandstone	Percent	0
Tertiary Lithology		Percent	
Comments			

System	Unknown		
Series			
Group			
Formation			
Member			
Submember			
Start Depth	1940.00 ft	End Depth	1942.00 ft
Contact Accuracy			
Penetration			
Primary Lithology		Percent	
Secondary Lithology		Percent	
Tertiary Lithology		Percent	
Comments			

Water Production Information

Date	02/29/1972	Start Time	
Aquifer	Unknown		
Static Water Level	186.00 ft	Yield	850 gallons per minute
Pumping Water Level	361 ft	Yield Method	Unknown
Measurement	Unknown	Pump Test	Yes
Pump Method	Unknown	Duration	0 mins
Comments			

Chip Storage Information

Date	02/25/1972		
Storage	PL8-711->714	Bin	
Number of Boxes	4	Number of Samples	388
Sample Intervals	5	Sample Gaps	220-25,290-95,345-50,35 5-60,445-50,645-50,980- 85,1
Sample Top	0 ft	Sample Bottom	1940 ft
Washed Top	0 ft	Washed Bottom	0 ft
Duplicate Storage			
Comments			

<https://www.ihr.uiowa.edu/igs/geosam/well/23110/general-information>