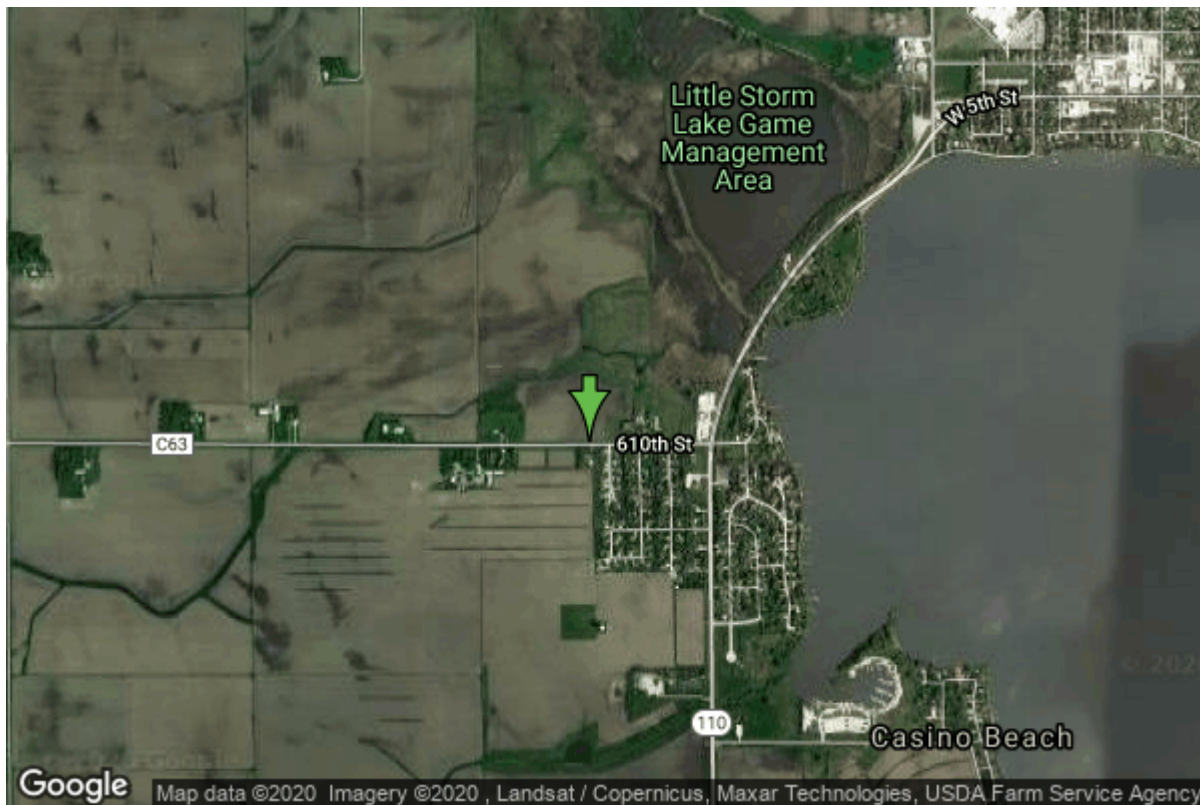


Well W#23573 Information



Date Received		State	Iowa
Owner Name	Storm Lake, City Of	County	Buena Vista
Alt Name	#12	Quadrangle	Storm Lake, Iowa
WNumber	23573	Township	T90N
PWTS ID	0	Range	R37W
PWS ID	1178097	Section	5
Storet ID	0	Quarter	SW SE SW
SDWIS ID	2409640	Latitude	42.6334800000
USGS ID	0	Longitude	-95.2442800000
Project	Source Water Protection	Accuracy	
Operator	Unknown	UTM X	315985
		UTM Y	4722556

Site Type	Drilled hole	Drilling Company	Winkler Well Drilling
Well Status	Not Used	Drilling Date	08/02/1974
Field Located	No	Drilling Method	Rotary
Elevation	1420 ft	Bedrock Depth	0 ft
Elevation Accuracy	Digital Elevation Model Accurate to 5 ft	Well Depth	110 ft
Landscape Position	Hillside	Total Depth	110 ft
		Well Types	Municipal, Public Supply
		Aquifers	Pleistocene

Casing Construction Information

Date	08/23/1976	Casing Type	Steel
Start Depth	0.00 ft	End Depth	50.00 ft

Diameter	16.00 in	Amount	0.00 ft
Comments			

Date	08/23/1976	Casing Type	Steel
Start Depth	68.00 ft	End Depth	76.00 ft
Diameter	16.00 in	Amount	8.00 ft
Comments			

Screen Construction Information

Date	08/23/1976		
Screen Type	Steel	Slot Size	0.13
Start Depth	50.00 ft	End Depth	68.00 ft
Diameter	16.00 in	Amount	18 ft
Comments			

Date	08/23/1976		
Screen Type	Steel	Slot Size	0.10
Start Depth	76.00 ft	End Depth	94.00 ft
Diameter	16.00 in	Amount	18 ft
Comments			

Log Information

Date	08/23/1976
Log Types	Strip log
Prepared By	Unknown
Comments	

Stratigraphy Information

System	Quaternary		
Series	Pleistocene Series		
Group	Wisconsinan Episode		
Formation	Sheldon Creek		
Member			
Submember			
Start Depth	0.00 ft	End Depth	110.00 ft
Contact Accuracy			
Penetration			
Primary Lithology	Till	Percent	100
Secondary Lithology		Percent	
Tertiary Lithology		Percent	
Comments			

Water Production Information

Date	08/23/1976	Start Time	
Aquifer	Unknown		
Static Water Level	6.00 ft	Yield	900 gallons per minute
Pumping Water Level	26 ft	Yield Method	Unknown
Measurement	Unknown	Pump Test	No
Pump Method	Unknown	Duration	0 mins
Comments			

Chip Storage Information

Date	12/23/1975		
Storage	PL9-021	Bin	
Number of Boxes	1	Number of Samples	25
Sample Intervals	5	Sample Gaps	
Sample Top	0 ft	Sample Bottom	110 ft
Washed Top	0 ft	Washed Bottom	0 ft
Duplicate Storage			
Comments			

<https://www.iuhr.uiowa.edu/igs/geosam/well/23573/general-information>