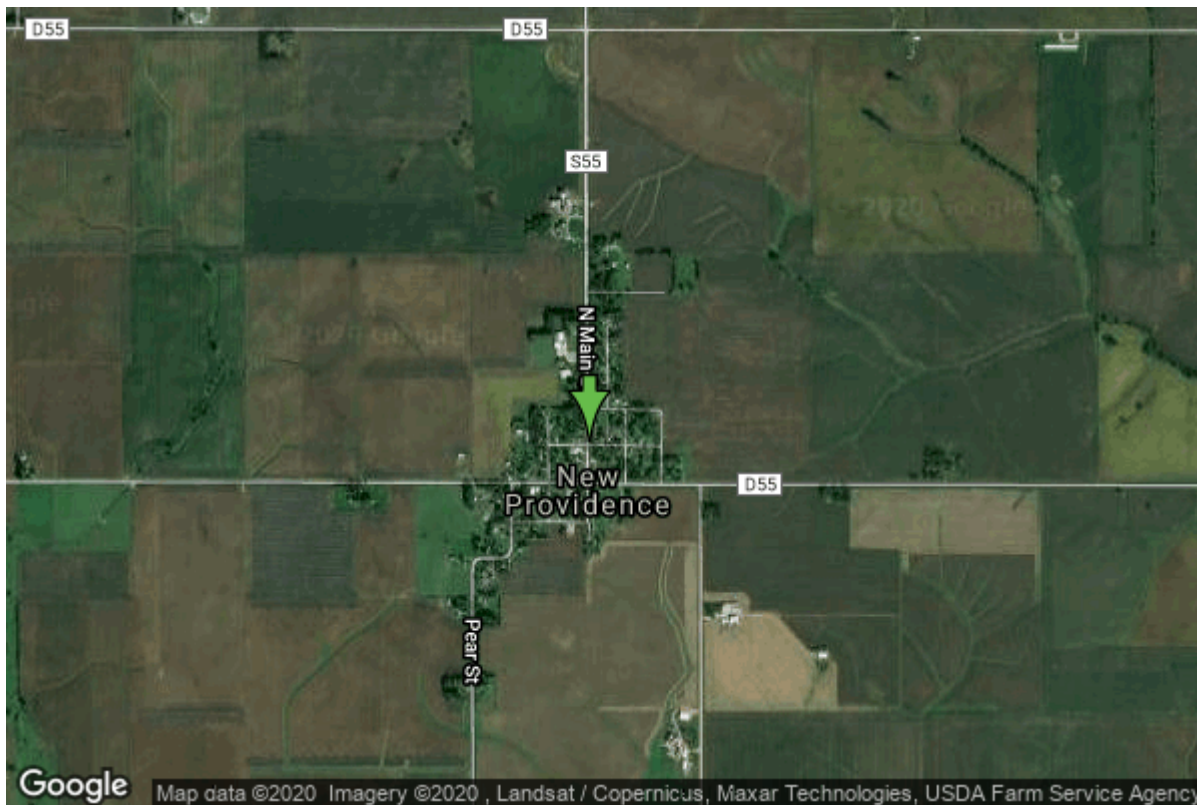


# Well W#2364 Information



<b>Date Received</b>		<b>State</b>	Iowa
<b>Owner Name</b>	New Providence, City Of	<b>County</b>	Hardin
<b>Alt Name</b>	#1	<b>Quadrangle</b>	New Providence, Iowa
<b>WNumber</b>	2364	<b>Township</b>	T86N
<b>PWTS ID</b>	0	<b>Range</b>	R20W
<b>PWS ID</b>	4271062	<b>Section</b>	3
<b>Storet ID</b>	0	<b>Quarter</b>	SW SE SW
<b>SDWIS ID</b>	2412509	<b>Latitude</b>	42.2826500000
<b>USGS ID</b>	0	<b>Longitude</b>	-93.1707800000
<b>Project</b>	Source Water Protection	<b>Accuracy</b>	
<b>Operator</b>	Unknown	<b>UTM X</b>	485919
		<b>UTM Y</b>	4681173

---

<b>Site Type</b>	Drilled hole	<b>Drilling Company</b>	Nolan, Charles D.
<b>Well Status</b>	Active	<b>Drilling Date</b>	01/01/1946
<b>Field Located</b>	No	<b>Drilling Method</b>	Unknown
<b>Elevation</b>	1129 ft	<b>Bedrock Depth</b>	0 ft
<b>Elevation Accuracy</b>	Digital Elevation Model Accurate to 5 ft	<b>Well Depth</b>	485 ft
<b>Landscape Position</b>	Unknown	<b>Total Depth</b>	485 ft
		<b>Well Types</b>	Municipal, Public Supply
		<b>Aquifers</b>	Mississippian

## Casing Construction Information

<b>Date</b>	07/01/1946	<b>Casing Type</b>	Unknown
<b>Start Depth</b>	0.00 ft	<b>End Depth</b>	314.00 ft

<b>Diameter</b>	8.00 in	<b>Amount</b>	0.00 ft
<b>Comments</b>			

## Log Information

<b>Date</b>	07/05/1946
<b>Log Types</b>	Strip log
<b>Prepared By</b>	Unknown
<b>Comments</b>	

---

<b>Date</b>	
<b>Log Types</b>	Drillers log
<b>Prepared By</b>	New Providence, City Of
<b>Comments</b>	

## Stratigraphy Information

<b>System</b>	Quaternary		
<b>Series</b>			
<b>Group</b>			
<b>Formation</b>			
<b>Member</b>			
<b>Submember</b>			
<b>Start Depth</b>	0.00 ft	<b>End Depth</b>	5.00 ft
<b>Contact Accuracy</b>			
<b>Penetration</b>			
<b>Primary Lithology</b>	Soil Or Fill	<b>Percent</b>	100
<b>Secondary Lithology</b>		<b>Percent</b>	
<b>Tertiary Lithology</b>		<b>Percent</b>	
<b>Comments</b>			

---

<b>System</b>	Quaternary		
<b>Series</b>	Pleistocene Series		
<b>Group</b>			
<b>Formation</b>			
<b>Member</b>			
<b>Submember</b>			
<b>Start Depth</b>	5.00 ft	<b>End Depth</b>	310.00 ft
<b>Contact Accuracy</b>			
<b>Penetration</b>			
<b>Primary Lithology</b>	Till	<b>Percent</b>	0
<b>Secondary Lithology</b>	Sand And Gravel	<b>Percent</b>	0
<b>Tertiary Lithology</b>		<b>Percent</b>	
<b>Comments</b>			

---

<b>System</b>	Mississippian (Subsystem Of Carboniferous System)
<b>Series</b>	

<b>Group</b>	Augusta		
<b>Formation</b>	Burlington		
<b>Member</b>			
<b>Submember</b>			
<b>Start Depth</b>	310.00 ft	<b>End Depth</b>	350.00 ft
<b>Contact Accuracy</b>			
<b>Penetration</b>			
<b>Primary Lithology</b>	Dolomite	<b>Percent</b>	0
<b>Secondary Lithology</b>	Chert/Chalcedony	<b>Percent</b>	0
<b>Tertiary Lithology</b>		<b>Percent</b>	
<b>Comments</b>			

---

<b>System</b>	Unknown		
<b>Series</b>			
<b>Group</b>			
<b>Formation</b>			
<b>Member</b>			
<b>Submember</b>			
<b>Start Depth</b>	350.00 ft	<b>End Depth</b>	375.00 ft
<b>Contact Accuracy</b>			
<b>Penetration</b>			
<b>Primary Lithology</b>	Limestone	<b>Percent</b>	0
<b>Secondary Lithology</b>	Dolomite	<b>Percent</b>	0
<b>Tertiary Lithology</b>		<b>Percent</b>	
<b>Comments</b>			

---

<b>System</b>	Mississippian (Subsystem Of Carboniferous System)		
<b>Series</b>			
<b>Group</b>	Sub-Augusta		
<b>Formation</b>	Gilmore City		
<b>Member</b>	Iowa Falls Dolomite		
<b>Submember</b>			
<b>Start Depth</b>	375.00 ft	<b>End Depth</b>	390.00 ft
<b>Contact Accuracy</b>			
<b>Penetration</b>			
<b>Primary Lithology</b>	Dolomite	<b>Percent</b>	100
<b>Secondary Lithology</b>		<b>Percent</b>	
<b>Tertiary Lithology</b>		<b>Percent</b>	
<b>Comments</b>			

---

<b>System</b>	Mississippian (Subsystem Of Carboniferous System)		
<b>Series</b>			
<b>Group</b>	Sub-Augusta		
<b>Formation</b>	Maynes Creek		
<b>Member</b>	Eagle City		
<b>Submember</b>			
<b>Start Depth</b>	390.00 ft	<b>End Depth</b>	395.00 ft
<b>Contact Accuracy</b>			
<b>Penetration</b>			

<b>Primary Lithology</b>	Limestone	<b>Percent</b>	100
<b>Secondary Lithology</b>		<b>Percent</b>	
<b>Tertiary Lithology</b>		<b>Percent</b>	
<b>Comments</b>			

---

<b>System</b>	Mississippian (Subsystem Of Carboniferous System)		
<b>Series</b>			
<b>Group</b>	Sub-Augusta		
<b>Formation</b>	Maynes Creek		
<b>Member</b>			
<b>Submember</b>			
<b>Start Depth</b>	395.00 ft	<b>End Depth</b>	465.00 ft
<b>Contact Accuracy</b>			
<b>Penetration</b>			
<b>Primary Lithology</b>	Dolomite	<b>Percent</b>	0
<b>Secondary Lithology</b>	Chert/Chalcedony	<b>Percent</b>	0
<b>Tertiary Lithology</b>		<b>Percent</b>	
<b>Comments</b>			

---

<b>System</b>	Mississippian (Subsystem Of Carboniferous System)		
<b>Series</b>			
<b>Group</b>	North Hill		
<b>Formation</b>	Chapin		
<b>Member</b>			
<b>Submember</b>			
<b>Start Depth</b>	465.00 ft	<b>End Depth</b>	467.00 ft
<b>Contact Accuracy</b>			
<b>Penetration</b>			
<b>Primary Lithology</b>	Dolomite	<b>Percent</b>	0
<b>Secondary Lithology</b>	Limestone	<b>Percent</b>	0
<b>Tertiary Lithology</b>		<b>Percent</b>	
<b>Comments</b>			

---

<b>System</b>	Mississippian (Subsystem Of Carboniferous System)		
<b>Series</b>			
<b>Group</b>	North Hill		
<b>Formation</b>	Prospect Hill		
<b>Member</b>			
<b>Submember</b>			
<b>Start Depth</b>	467.00 ft	<b>End Depth</b>	485.00 ft
<b>Contact Accuracy</b>			
<b>Penetration</b>			
<b>Primary Lithology</b>	Siltstone	<b>Percent</b>	0
<b>Secondary Lithology</b>	Shale	<b>Percent</b>	0
<b>Tertiary Lithology</b>	Dolomite	<b>Percent</b>	0
<b>Comments</b>			

## Water Production Information

<b>Date</b>	07/01/1946	<b>Start Time</b>	
<b>Aquifer</b>	Unknown		
<b>Static Water Level</b>	175.00 ft	<b>Yield</b>	50 gallons per minute
<b>Pumping Water Level</b>	200 ft	<b>Yield Method</b>	Unknown
<b>Measurement</b>	Unknown	<b>Pump Test</b>	No
<b>Pump Method</b>	Unknown	<b>Duration</b>	0 mins
<b>Comments</b>			

## Chip Storage Information

<b>Date</b>		<b>Bin</b>	
<b>Storage</b>	WN10-5	<b>Number of Samples</b>	97
<b>Number of Boxes</b>	1	<b>Sample Gaps</b>	145-150
<b>Sample Intervals</b>	5	<b>Sample Bottom</b>	485 ft
<b>Sample Top</b>	0 ft	<b>Washed Bottom</b>	0 ft
<b>Washed Top</b>	0 ft		
<b>Duplicate Storage</b>			
<b>Comments</b>			

<https://www.iuhr.uiowa.edu/igs/geosam/well/2364/general-information>