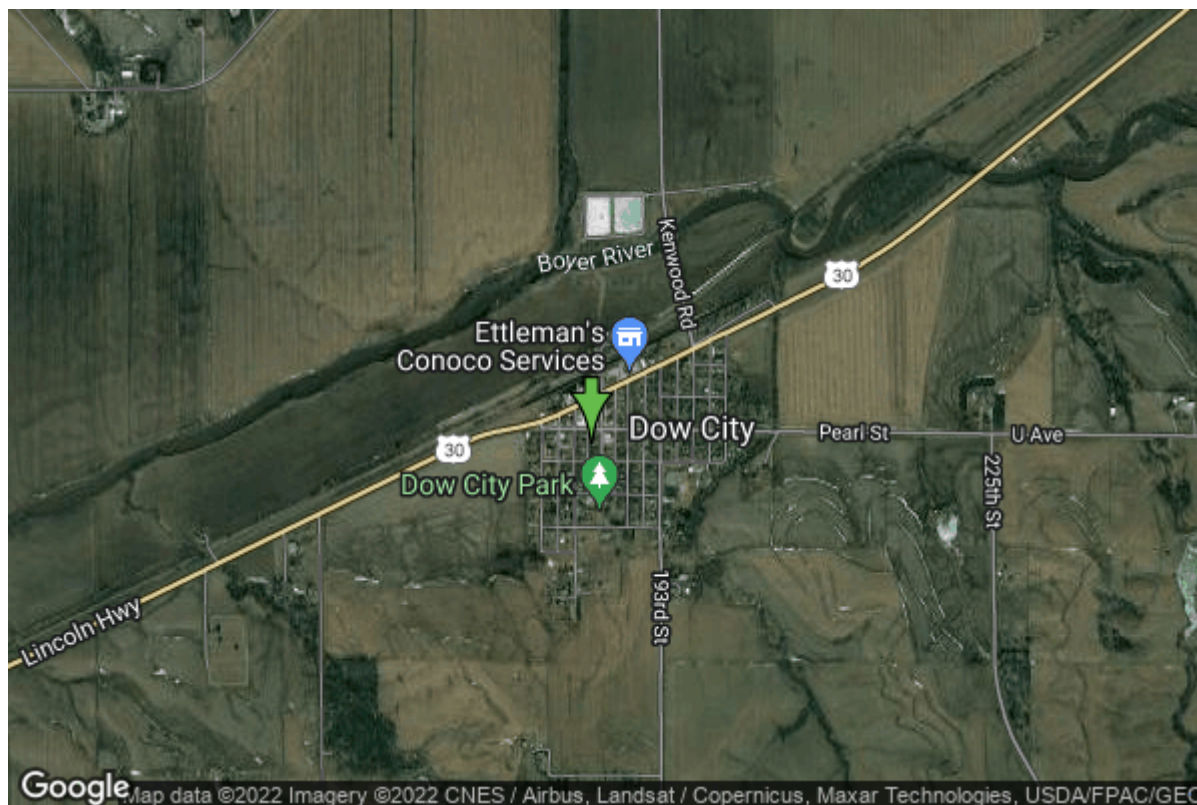


Well W#2379 Information



Date Received		State	Iowa
Owner Name	Dow City, City Of	County	Crawford
Alt Name	NORTH	Quadrangle	Dow City, Iowa
WNumber	2379	Township	T82N
PWTS ID	0	Range	R40W
PWS ID	2427049	Section	10
Storet ID	0	Quarter	SW NW NE
SDWIS ID	0	Latitude	41.9283120000
USGS ID	0	Longitude	-95.4959290000
Project	Source Water Protection	Accuracy	
Operator	Unknown	UTM X	293054
		UTM Y	4644830

Site Type	Drilled hole	Drilling Company	Rasmussen, Carrol
Well Status	Not Used	Drilling Date	03/01/1947
Field Located	No	Drilling Method	Unknown
Elevation	1139 ft	Bedrock Depth	0 ft
Elevation Accuracy	Digital Elevation Model Accurate to 5 ft	Well Depth	85 ft
Landscape Position	Valley	Total Depth	85 ft
		Well Types	Municipal
		Aquifers	Alluvium

Log Information

Date	01/20/1947
Log Types	Strip log

Prepared By Parker, Mary Combs
Comments

Date
Log Types Drillers log
Prepared By Dow City, City Of
Comments

Stratigraphy Information

System Quaternary
Series
Group
Formation
Member
Submember
Start Depth 0.00 ft **End Depth** 64.00 ft
Contact Accuracy
Penetration
Primary Lithology Unknown **Percent** 0
Secondary Lithology Unknown **Percent** 0
Tertiary Lithology Unknown **Percent** 0
Comments

System Quaternary
Series Pleistocene Series
Group
Formation
Member
Submember
Start Depth 64.00 ft **End Depth** 81.00 ft
Contact Accuracy
Penetration
Primary Lithology Sand And Gravel **Percent** 0
Secondary Lithology Sand **Percent** 0
Tertiary Lithology **Percent**
Comments

Chip Storage Information

Date
Storage WN10-10 **Bin**
Number of Boxes 1 **Number of Samples** 10
Sample Intervals 0 **Sample Gaps** 0-64
Sample Top 64 ft **Sample Bottom** 81 ft
Washed Top 0 ft **Washed Bottom** 0 ft
Duplicate Storage

Comments

<https://www.ihr.uiowa.edu/igs/geosam/well/2379/general-information>