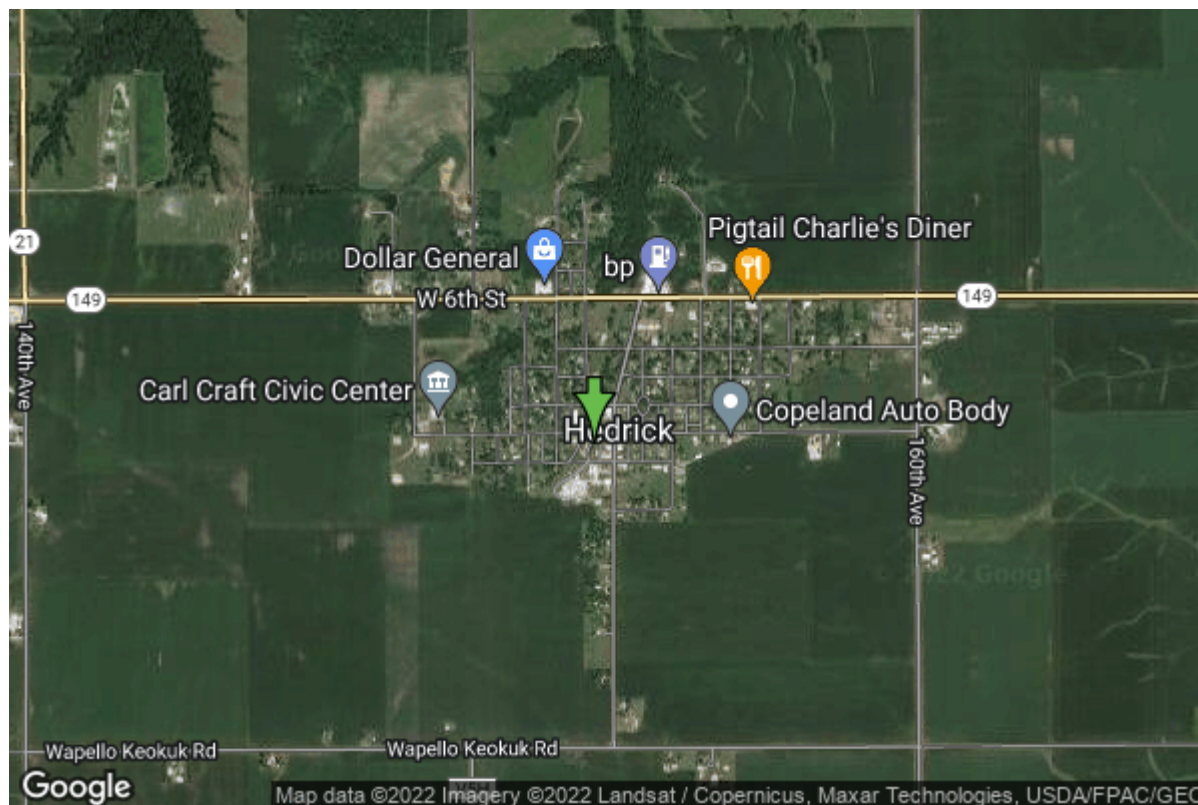


Well W#24621 Information



Date Received	11/01/1977	State	Iowa
Owner Name	Hedrick, City Of	County	Keokuk
Alt Name	#2	Quadrangle	Hedrick, Iowa
WNumber	24621	Township	T74N
PWTS ID	0	Range	R13W
PWS ID	5432042	Section	36
Storet ID	0	Quarter	NW SE NW
SDWIS ID	2407246	Latitude	41.1720810000
USGS ID	0	Longitude	-92.3091620000
Project	Source Water Protection	Accuracy	
Operator	Unknown	UTM X	557949
		UTM Y	4558090

Site Type	Drilled hole	Drilling Company	Layne Western - Ia.
Well Status	Not Used	Drilling Date	12/14/1977
Field Located	No	Drilling Method	Rotary
Elevation	821 ft	Bedrock Depth	0 ft
Elevation Accuracy	Digital Elevation Model Accurate to 5 ft	Well Depth	2055 ft
Landscape Position	Unknown	Total Depth	2055 ft
		Well Types	Municipal, Public Supply
		Aquifers	Cambrian-Ordovician

Casing Construction Information

Date	11/11/1977	Casing Type	Steel
Start Depth	0.00 ft	End Depth	0.00 ft

Diameter	20.00 in	Amount	300.00 ft
Comments			
Date	11/11/1977	Casing Type	Steel
Start Depth	0.00 ft	End Depth	0.00 ft
Diameter	12.00 in	Amount	500.00 ft
Comments			
Date	11/11/1977	Casing Type	Steel
Start Depth	0.00 ft	End Depth	0.00 ft
Diameter	8.00 in	Amount	1580.00 ft
Comments			

Log Information

Date	04/24/1984
Log Types	Strip log
Prepared By	Bouck, Michael Joseph
Comments	

Date	
Log Types	Drillers log
Prepared By	Hedrick, City Of
Comments	

Stratigraphy Information

System	Quaternary		
Series	Pleistocene Series		
Group	Pre-Illinoian		
Formation			
Member			
Submember			
Start Depth	0.00 ft	End Depth	50.00 ft
Contact Accuracy			
Penetration			
Primary Lithology	Till - Oxidized And Unleached	Percent	0
Secondary Lithology		Percent	
Tertiary Lithology		Percent	
Comments			

System	Quaternary
Series	Pleistocene Series
Group	Pre-Illinoian
Formation	
Member	

Submember			
Start Depth	50.00 ft	End Depth	100.00 ft
Contact Accuracy			
Penetration			
Primary Lithology	Till - Unoxidized And Unleached	Percent	0
Secondary Lithology		Percent	
Tertiary Lithology		Percent	
Comments	gap 60-70'		

Water Production Information

Date	11/11/1977	Start Time	
Aquifer	Unknown		
Static Water Level	201.00 ft	Yield	892 gallons per minute
Pumping Water Level	227 ft	Yield Method	Unknown
Measurement	Unknown	Pump Test	No
Pump Method	Unknown	Duration	0 mins
Comments			

Chip Storage Information

Date	11/14/1977		
Storage	PL9-409->413	Bin	
Number of Boxes	5	Number of Samples	404
Sample Intervals	5	Sample Gaps	60-70,1335-1340,1980-2000
Sample Top	0 ft	Sample Bottom	2055 ft
Washed Top	100 ft	Washed Bottom	2055 ft
Duplicate Storage			
Comments			

<https://www.iihr.uiowa.edu/igs/geosam/well/24621/general-information>