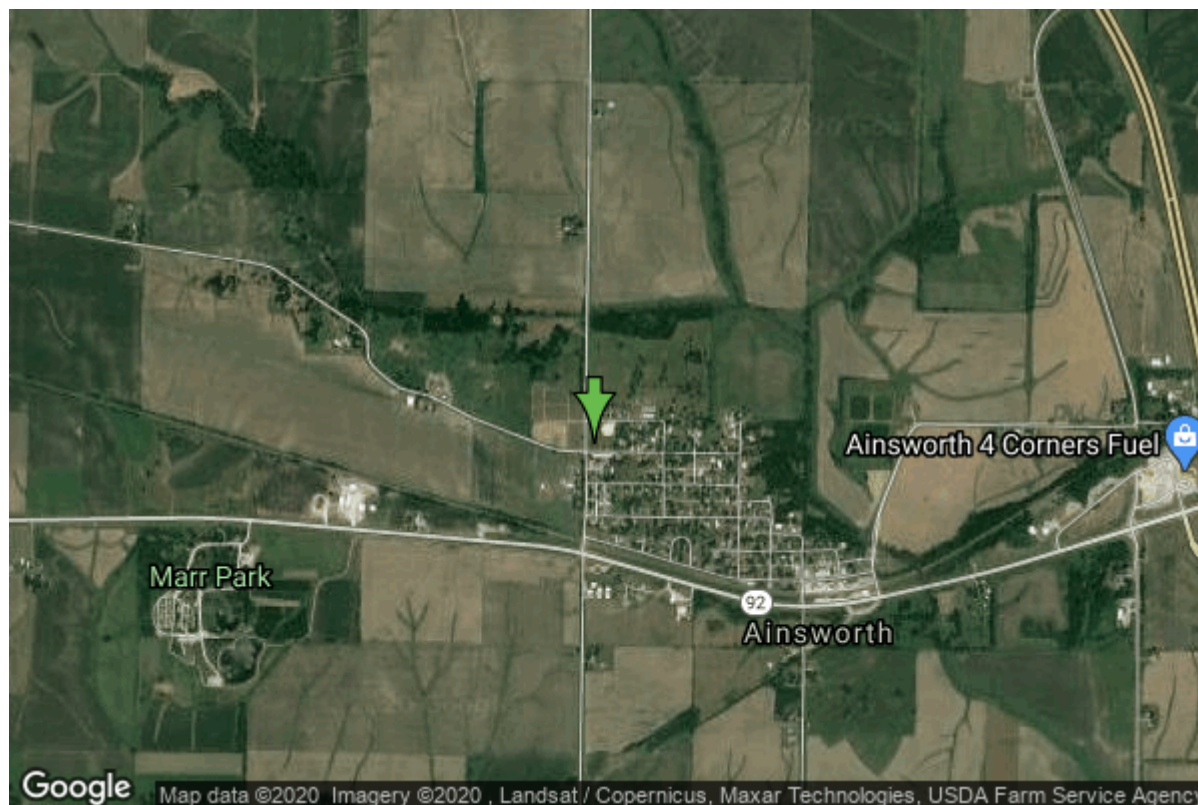


Well W#24623 Information



Date Received		State	Iowa
Owner Name	Ainsworth, City Of	County	Washington
Alt Name	#5	Quadrangle	Ainsworth, Iowa
WNumber	24623	Township	T75N
PWTS ID	0	Range	R6W
PWS ID	9203007	Section	21
Storet ID	0	Quarter	NW NW NW
SDWIS ID	2411923	Latitude	41.2929470000
USGS ID	0	Longitude	-91.5604700000
Project	Source Water Protection	Accuracy	
Operator	Unknown	UTM X	620531
		UTM Y	4572277

Site Type	Drilled hole	Drilling Company	Varner Well Co.
Well Status	Active	Drilling Date	12/01/1977
Field Located	No	Drilling Method	Rotary
Elevation	742 ft	Bedrock Depth	140 ft
Elevation Accuracy	Digital Elevation Model Accurate to 5 ft	Well Depth	1820 ft
Landscape Position	Upland	Total Depth	1820 ft
		Well Types	Municipal, Public Supply
		Aquifers	Cambrian-Ordovician

Casing Construction Information

Date	12/12/1977	Casing Type	Steel
Start Depth	0.00 ft	End Depth	175.00 ft

Diameter	14.00 in	Amount	175.00 ft
Comments			
Date	12/12/1977	Casing Type	Steel
Start Depth	0.00 ft	End Depth	1145.00 ft
Diameter	8.00 in	Amount	1145.00 ft
Comments			
Date		Casing Type	
Start Depth	180.00 ft	End Depth	1320.00 ft
Diameter	8.00 in	Amount	1140.00 ft
Comments	1/21/2015 - received email from water operator that confirmed this is how the well is currently constructed - R. Langel		
Date		Casing Type	
Start Depth	0.00 ft	End Depth	180.00 ft
Diameter	14.00 in	Amount	180.00 ft
Comments	1/21/2015 - received email from water operator that confirmed this is how the well is currently constructed - R. Langel		

Grout Construction Information

Date	12/12/1977		
Grout Type	Cement	Grout Placement	Unknown
Start Depth	0.00 ft	End Depth	1145.00 ft
Comments			
Date		Grout Placement	
Grout Type	Cement	End Depth	1320.00 ft
Start Depth	0.00 ft		
Comments	1/21/2015 - received email from water operator that confirmed this is how the well is currently constructed - R. Langel		

Log Information

Date	09/01/1979
Log Types	Strip log
Prepared By	Unknown
Comments	
Date	12/01/1977
Log Types	Drillers log
Prepared By	Varner Well Co.
Comments	1/21/2015 - received email from water operator that confirms this is the current casing of well

Date

Log Types
Prepared By
Comments

Pump Test

Stratigraphy Information

System Quaternary

Series

Group

Formation

Member

Submember

Start Depth 0.00 ft

End Depth 100.00 ft

Contact Accuracy

Penetration

Primary Lithology

Percent

Secondary Lithology

Percent

Tertiary Lithology

Percent

Comments

System Quaternary

Series Pleistocene Series

Group Pre-Illinoian

Formation

Member

Submember

Start Depth 100.00 ft

End Depth 110.00 ft

Contact Accuracy

Penetration

Primary Lithology Till - Unoxidized And
Unleached

Percent 100

Secondary Lithology

Percent

Tertiary Lithology

Percent

Comments

System Quaternary

Series Pleistocene Series

Group

Formation

Member

Submember

Start Depth 110.00 ft

End Depth 140.00 ft

Contact Accuracy

Penetration

Primary Lithology Sand

Percent 100

Secondary Lithology

Percent

Tertiary Lithology

Percent

Comments

Water Production Information

Date	12/12/1977	Start Time	
Aquifer	Unknown		
Static Water Level	189.00 ft	Yield	250 gallons per minute
Pumping Water Level	305 ft	Yield Method	Unknown
Measurement	Unknown	Pump Test	Yes
Pump Method	Unknown	Duration	0 mins
Comments			

Chip Storage Information

Date	11/29/1977		
Storage	PL9-415->418	Bin	
Number of Boxes	4	Number of Samples	330
Sample Intervals	5	Sample Gaps	0-100,165-70,405-65,173 0-35
Sample Top	100 ft	Sample Bottom	1820 ft
Washed Top	140 ft	Washed Bottom	1820 ft
Duplicate Storage			
Comments			

<https://www.iuhr.uiowa.edu/igs/geosam/well/24623/general-information>