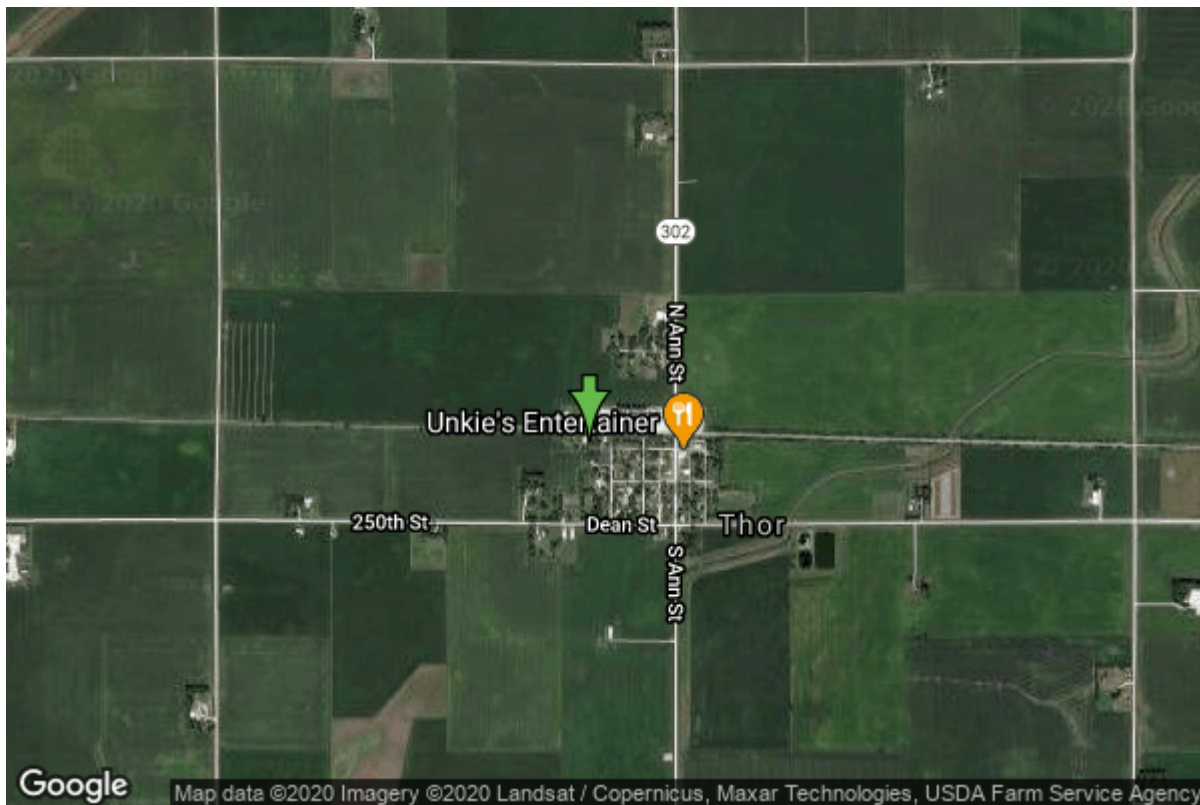


Well W#2525 Information



Date Received		State	Iowa
Owner Name	Thor, City Of	County	Humboldt
Alt Name	#1	Quadrangle	Thor, Iowa
WNumber	2525	Township	T91N
PWTS ID	0	Range	R27W
PWS ID	4680018	Section	17
Storet ID	0	Quarter	SE SE NW
SDWIS ID	2412529	Latitude	42.6906230000
USGS ID	0	Longitude	-94.0525840000
Project	Source Water Protection	Accuracy	
Operator	Unknown	UTM X	413776
		UTM Y	4726997

Site Type	Drilled hole	Drilling Company	Beemer, Guy
Well Status	Standby	Drilling Date	09/12/1946
Field Located	No	Drilling Method	Unknown
Elevation	1149 ft	Bedrock Depth	0 ft
Elevation Accuracy	Digital Elevation Model Accurate to 5 ft	Well Depth	373 ft
Landscape Position	Unknown	Total Depth	373 ft
		Well Types	Private
		Aquifers	Mississippian

Hole Construction Information

Date	03/28/1998	Depth	398.00 ft
Diameter	9.88 in		

Comments

Date	03/28/1998	Depth	471.00 ft
Diameter	7.88 in		
Comments			

Date	03/28/1998	Depth	660.00 ft
Diameter	5.88 in		
Comments			

Casing Construction Information

Date	03/28/1998	Casing Type	PVC
Start Depth	-1.00 ft	End Depth	398.00 ft
Diameter	8.00 in	Amount	399.00 ft
Comments			

Date	03/28/1998	Casing Type	PVC
Start Depth	379.00 ft	End Depth	471.00 ft
Diameter	6.00 in	Amount	96.00 ft
Comments			

Date	09/12/1946	Casing Type	Steel
Start Depth	0.00 ft	End Depth	135.00 ft
Diameter	8.00 in	Amount	135.00 ft
Comments			

Date	09/12/1946	Casing Type	Steel
Start Depth	0.00 ft	End Depth	166.00 ft
Diameter	6.00 in	Amount	166.00 ft
Comments			

Grout Construction Information

Date	03/28/1998	Grout Placement	Unknown
Grout Type	Bentonite (Clay)	End Depth	398.00 ft
Start Depth	7.00 ft		
Comments			

Log Information

Date	01/01/1948
Log Types	Strip log
Prepared By	Unknown
Comments	

Date
Log Types Drillers log
Prepared By Thor, City Of
Comments

Stratigraphy Information

System Quaternary
Series
Group
Formation
Member
Submember
Start Depth 0.00 ft End Depth 100.00 ft
Contact Accuracy
Penetration
Primary Lithology Percent
Secondary Lithology Percent
Tertiary Lithology Percent
Comments

System Quaternary
Series
Group
Formation
Member
Submember
Start Depth 100.00 ft End Depth 120.00 ft
Contact Accuracy
Penetration
Primary Lithology Sand And Gravel Percent 100
Secondary Lithology Unknown Percent 0
Tertiary Lithology Unknown Percent 0
Comments

System Cretaceous
Series
Group Fort Benton ("Lower Colorado ")
Formation Dakota
Member
Submember
Start Depth 120.00 ft End Depth 160.00 ft
Contact Accuracy
Penetration
Primary Lithology Sandstone Percent 100
Secondary Lithology Percent
Tertiary Lithology Percent

Comments

System Mississippi (Subsystem Of Carboniferous System)
Series
Group Augusta
Formation
Member
Submember
Start Depth 160.00 ft **End Depth** 190.00 ft
Contact Accuracy
Penetration
Primary Lithology Dolomite **Percent** 0
Secondary Lithology Chert/Chalcedony **Percent** 0
Tertiary Lithology **Percent**
Comments

System Mississippi (Subsystem Of Carboniferous System)
Series
Group Sub-Augusta
Formation Gilmore City
Member
Submember
Start Depth 190.00 ft **End Depth** 245.00 ft
Contact Accuracy
Penetration
Primary Lithology Limestone **Percent** 100
Secondary Lithology **Percent**
Tertiary Lithology **Percent**
Comments

System Mississippi (Subsystem Of Carboniferous System)
Series
Group Sub-Augusta
Formation Maynes Creek
Member
Submember
Start Depth 245.00 ft **End Depth** 373.00 ft
Contact Accuracy
Penetration
Primary Lithology Dolomite **Percent** 0
Secondary Lithology Chert/Chalcedony **Percent** 0
Tertiary Lithology **Percent**
Comments

Water Production Information

Date 03/28/1998 **Start Time** 12:25
Aquifer Unknown

Static Water Level	36.00 ft	Yield	85 gallons per minute
Pumping Water Level	127 ft	Yield Method	Orifice
Measurement	Electric Line	Pump Test	Yes
Pump Method	Airlifted	Duration	0 mins
Comments			

Date	09/12/1946	Start Time	
Aquifer	Unknown	Yield	100 gallons per minute
Static Water Level	0.00 ft	Yield Method	Unknown
Pumping Water Level	0 ft	Pump Test	No
Measurement	Unknown	Duration	0 mins
Pump Method	Unknown		
Comments			

Chip Storage Information

Date	11/06/1998		
Storage	WO8-2;CE5-2;OD3-741	Bin	
Number of Boxes	1	Number of Samples	52
Sample Intervals	5	Sample Gaps	0-100, 486-660
Sample Top	100 ft	Sample Bottom	486 ft
Washed Top	145 ft	Washed Bottom	486 ft
Duplicate Storage			
Comments			

<https://www.iuhr.uiowa.edu/igs/geosam/well/2525/general-information>