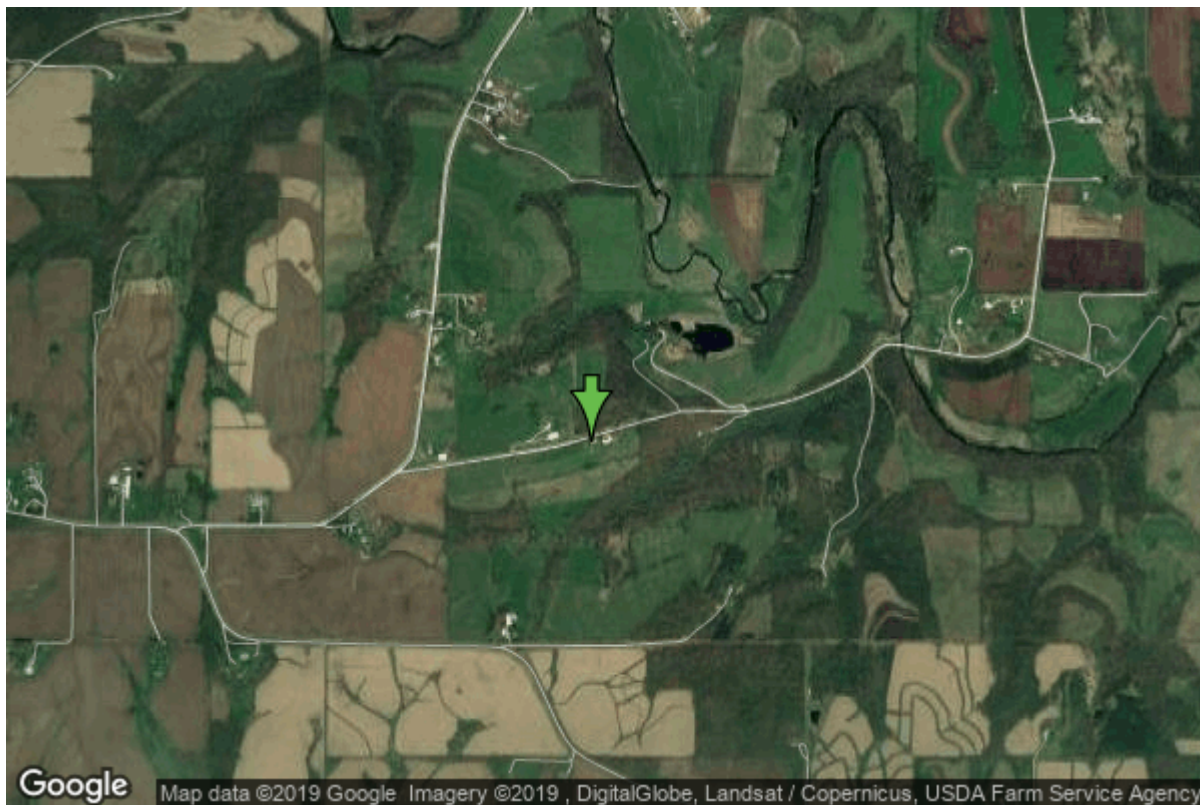


Well W#25315 Information



Date Received		State	Iowa
Owner Name	Blees, Martin	County	Winneshiek
Alt Name	(WAYNE DOSTAL)	Quadrangle	Freeport, Iowa
WNumber	25315	Township	T99N
PWTS ID	0	Range	R7W
PWS ID	0	Section	31
Storet ID	0	Quarter	NE NW NW SE
SDWIS ID	0	Latitude	43.3557590000
USGS ID	0	Longitude	-91.7182930000
Project	Unknown	Accuracy	
Operator	Unknown	UTM X	603866
		UTM Y	4801120

Site Type	Drilled hole	Drilling Company	Well Service Co.
Well Status	Unknown	Drilling Date	03/24/1978
Field Located	Yes	Drilling Method	Rotary
Elevation	1103 ft	Bedrock Depth	5 ft
Elevation Accuracy	Digital Elevation Model Accurate to 5 ft	Well Depth	445 ft
Landscape Position	Upland	Total Depth	445 ft
		Well Types	Private
		Aquifers	

Log Information

Date	09/06/1978
Log Types	Strip log

Prepared By Unknown
Comments

Date
Log Types Drillers log
Prepared By Blees, Martin
Comments

Stratigraphy Information

System Quaternary
Series Pleistocene Series
Group Wisconsinan Episode
Formation Peoria
Member
Submember
Start Depth 0.00 ft **End Depth** 5.00 ft
Contact Accuracy
Penetration
Primary Lithology Loess **Percent** 100
Secondary Lithology **Percent**
Tertiary Lithology **Percent**
Comments

System Ordovician
Series
Group Galena
Formation Dunleith
Member
Submember
Start Depth 5.00 ft **End Depth** 30.00 ft
Contact Accuracy
Penetration
Primary Lithology Ls/Dol Mixed **Percent** 100
Secondary Lithology **Percent**
Tertiary Lithology **Percent**
Comments

System Ordovician
Series
Group Galena
Formation Decorah
Member
Submember
Start Depth 30.00 ft **End Depth** 70.00 ft
Contact Accuracy
Penetration
Primary Lithology Shale **Percent** 0

Secondary Lithology	Limestone	Percent	0
Tertiary Lithology		Percent	
Comments			

System	Ordovician		
Series			
Group	Galena		
Formation	Platteville		
Member			
Submember			
Start Depth	70.00 ft	End Depth	101.00 ft
Contact Accuracy			
Penetration			
Primary Lithology	Limestone	Percent	0
Secondary Lithology	Dolomite	Percent	0
Tertiary Lithology		Percent	
Comments			

System	Ordovician		
Series			
Group	Ancell		
Formation	Glenwood		
Member			
Submember			
Start Depth	101.00 ft	End Depth	105.00 ft
Contact Accuracy			
Penetration			
Primary Lithology	Shale	Percent	100
Secondary Lithology		Percent	
Tertiary Lithology		Percent	
Comments			

System	Ordovician		
Series			
Group	Ancell		
Formation	St. Peter Sandstone		
Member			
Submember			
Start Depth	105.00 ft	End Depth	170.00 ft
Contact Accuracy			
Penetration			
Primary Lithology	Sandstone	Percent	100
Secondary Lithology		Percent	
Tertiary Lithology		Percent	
Comments			

System	Ordovician		
Series			
Group	Prairie Du Chien		

Formation Member	Shakopee		
Submember			
Start Depth	170.00 ft	End Depth	290.00 ft
Contact Accuracy Penetration			
Primary Lithology	Dolomite	Percent	0
Secondary Lithology	Sandstone	Percent	0
Tertiary Lithology		Percent	
Comments			

System Series	Ordovician		
Group	Prairie Du Chien		
Formation Member	Oneota		
Submember			
Start Depth	290.00 ft	End Depth	439.00 ft
Contact Accuracy Penetration			
Primary Lithology	Dolomite	Percent	0
Secondary Lithology	Chert/Chalcedony	Percent	0
Tertiary Lithology		Percent	
Comments			

System Series	Cambrian		
Group			
Formation Member	Jordan		
Submember			
Start Depth	439.00 ft	End Depth	445.00 ft
Contact Accuracy Penetration			
Primary Lithology	Sandstone	Percent	0
Secondary Lithology	Dolomite	Percent	0
Tertiary Lithology		Percent	
Comments			

Water Production Information

Date	03/24/1978	Start Time	
Aquifer	Unknown		
Static Water Level	250.00 ft	Yield	0 gallons per minute
Pumping Water Level	0 ft	Yield Method	Unknown
Measurement	Unknown	Pump Test	No
Pump Method	Unknown	Duration	0 mins
Comments			

Chip Storage Information

Date	08/31/1978		
Storage	PL9-733,734	Bin	
Number of Boxes	2	Number of Samples	89
Sample Intervals	5	Sample Gaps	
Sample Top	0 ft	Sample Bottom	445 ft
Washed Top	5 ft	Washed Bottom	445 ft
Duplicate Storage			
Comments			

<https://www.iihr.uiowa.edu/igs/geosam/well/25315/general-information>