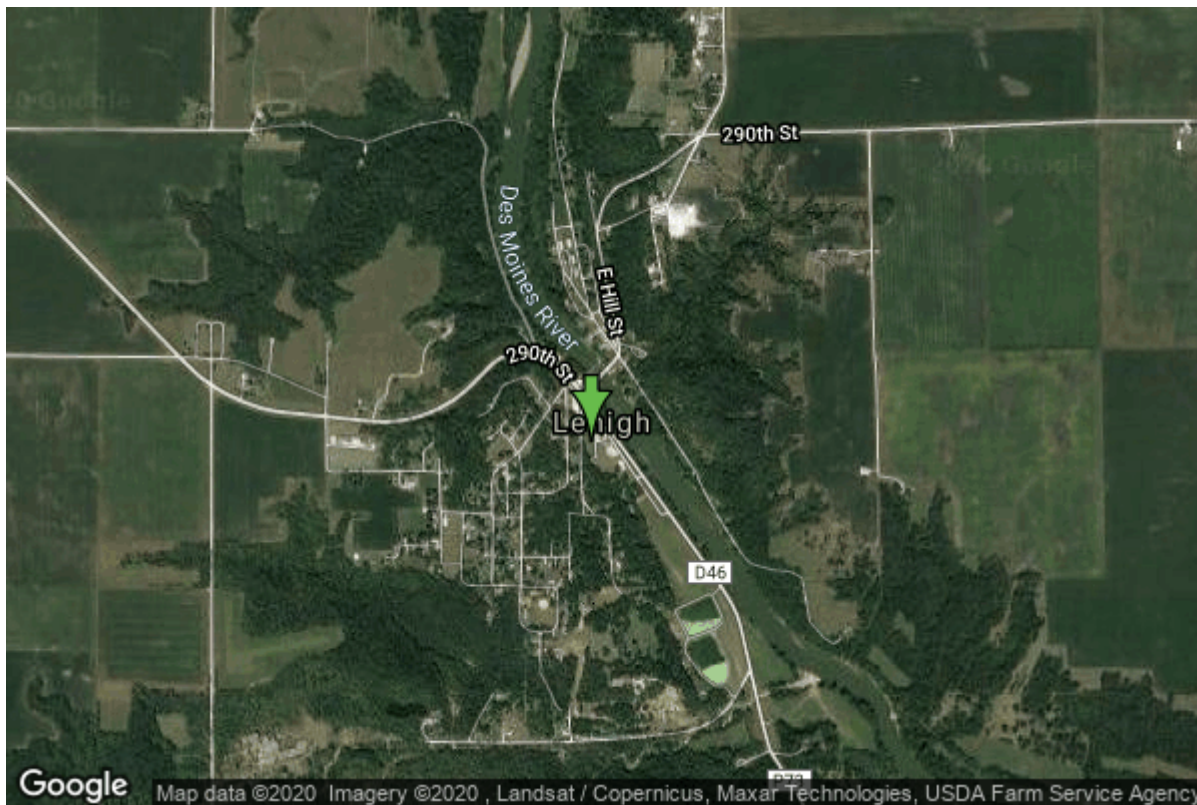


Well W#25340 Information



Date Received		State	Iowa
Owner Name	Lehigh, City Of	County	Webster
Alt Name	#4	Quadrangle	Lehigh, Iowa
WNumber	25340	Township	T87N
PWTS ID	0	Range	R28W
PWS ID	9453071	Section	12
Storet ID	0	Quarter	SE NE SW
SDWIS ID	2410134	Latitude	42.3585000000
USGS ID	0	Longitude	-94.0507510000
Project	Source Water Protection	Accuracy	
Operator	Unknown	UTM X	413469
		UTM Y	4690116

Site Type	Drilled hole	Drilling Company	Layne Western - Ia.
Well Status	Active	Drilling Date	08/31/1978
Field Located	No	Drilling Method	Unknown
Elevation	949 ft	Bedrock Depth	0 ft
Elevation Accuracy	Digital Elevation Model Accurate to 5 ft	Well Depth	1923 ft
Landscape Position	Unknown	Total Depth	1925 ft
		Well Types	Municipal, Public Supply
		Aquifers	Cambrian-Ordovician

Hole Construction Information

Date	09/18/1978	Depth	1923.00 ft
Diameter	7.88 in		

Comments

Date	09/18/1978	Depth	1570.00 ft
Diameter	12.50 in		
Comments			

Date	09/18/1978	Depth	575.00 ft
Diameter	15.00 in		
Comments			

Date	09/18/1978	Depth	75.00 ft
Diameter	20.00 in		
Comments			

Casing Construction Information

Date	09/18/1978	Casing Type	Steel
Start Depth	575.00 ft	End Depth	1570.00 ft
Diameter	8.00 in	Amount	995.00 ft
Comments			

Date	09/18/1978	Casing Type	Steel
Start Depth	0.00 ft	End Depth	575.00 ft
Diameter	10.00 in	Amount	575.00 ft
Comments			

Date	09/18/1978	Casing Type	Steel
Start Depth	0.00 ft	End Depth	75.00 ft
Diameter	16.00 in	Amount	75.00 ft
Comments			

Grout Construction Information

Date	09/18/1978	Grout Placement	
Grout Type		End Depth	1570.00 ft
Start Depth	0.00 ft		
Comments			

Log Information

Date	11/01/2008
Log Types	Strip log
Prepared By	Bounk, Michael Joseph
Comments	

Date	09/18/1978
Log Types	Drillers log
Prepared By	Layne-Western
Comments	

Chip Storage Information

Date	09/25/1978	Bin	
Storage	PL9-750->754	Number of Samples	363
Number of Boxes	5	Sample Gaps	SEE PAPERFORM FOR GAPS
Sample Intervals	5	Sample Bottom	1925 ft
Sample Top	0 ft	Washed Bottom	1925 ft
Washed Top	115 ft		
Duplicate Storage			
Comments			

<https://www.iihr.uiowa.edu/igs/geosam/well/25340/general-information>