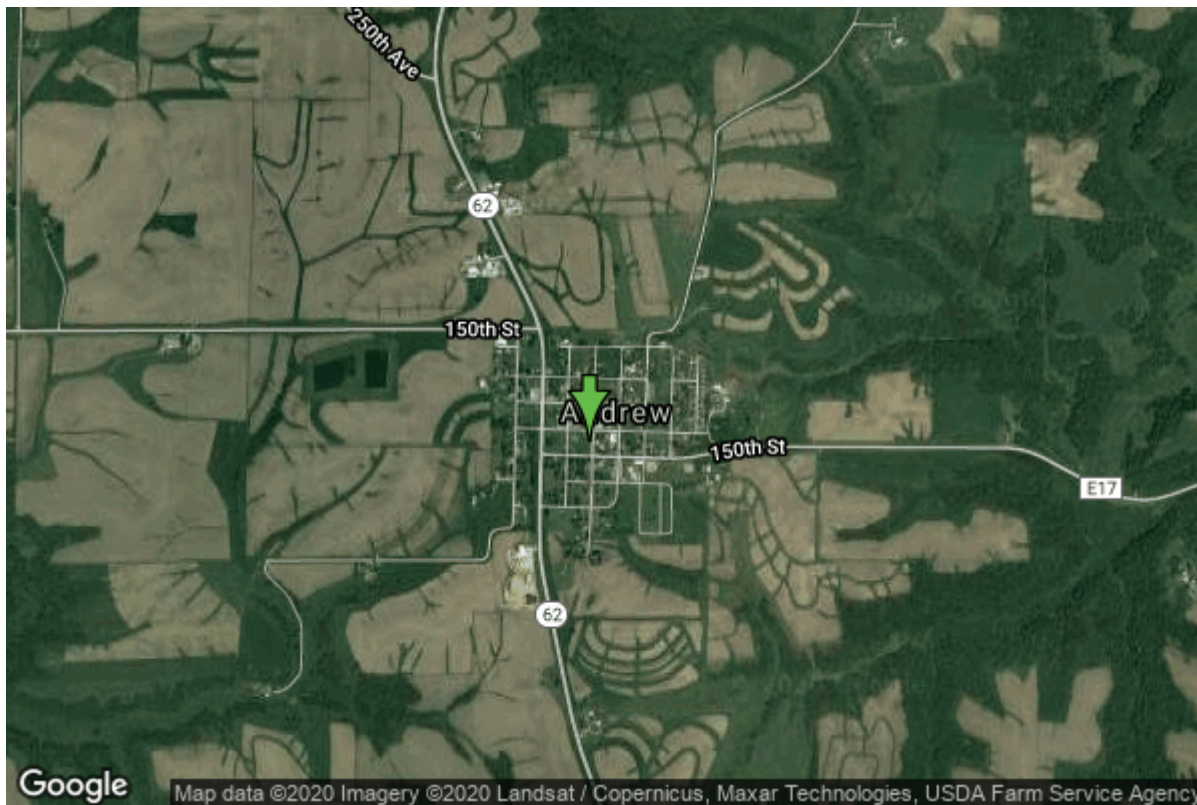


Well W#25433 Information



Date Received		State	Iowa
Owner Name	Andrew, City Of	County	Jackson
Alt Name	#2	Quadrangle	Andrew, Iowa
WNumber	25433	Township	T85N
PWTS ID	0	Range	R3E
PWS ID	4903050	Section	22
Storet ID	0	Quarter	SE NE SW
SDWIS ID	2410570	Latitude	42.1533600000
USGS ID	0	Longitude	-90.5918200000
Project	Source Water Protection	Accuracy	
Operator	Unknown	UTM X	698966
		UTM Y	4669611

Site Type	Drilled hole	Drilling Company	Rich Ogden Well Service
Well Status	Active	Drilling Date	07/01/1978
Field Located	No	Drilling Method	Rotary
Elevation	885 ft	Bedrock Depth	45 ft
Elevation Accuracy	Digital Elevation Model	Well Depth	1235 ft
	Accurate to 5 ft	Total Depth	1235 ft
Landscape Position	Upland	Well Types	Municipal, Public Supply
		Aquifers	Cambrian-Ordovician

Casing Construction Information

Date	06/14/1978	Casing Type	Steel
Start Depth	0.00 ft	End Depth	65.00 ft

Diameter	14.00 in	Amount	65.00 ft
-----------------	----------	---------------	----------

Comments

Date	06/14/1978	Casing Type	Steel
Start Depth	0.00 ft	End Depth	900.00 ft
Diameter	8.00 in	Amount	900.00 ft

Comments

Log Information

Date	12/01/1978
Log Types	Strip log
Prepared By	Unknown

Comments

Date	
Log Types	Drillers log
Prepared By	Unknown

Comments

Stratigraphy Information

System	Quaternary		
Series	Pleistocene Series		
Group	Pre-Illinoian		
Formation			
Member			
Submember			
Start Depth	0.00 ft	End Depth	50.00 ft
Contact Accuracy			
Penetration			
Primary Lithology	Till	Percent	100
Secondary Lithology		Percent	
Tertiary Lithology		Percent	

Comments

System	Silurian		
Series			
Group			
Formation	Scotch Grove		
Member			
Submember			
Start Depth	50.00 ft	End Depth	85.00 ft
Contact Accuracy			
Penetration			
Primary Lithology	Ls/Dol Mixed	Percent	100
Secondary Lithology		Percent	

Tertiary Lithology		Percent	
Comments			
System	Silurian		
Series			
Group			
Formation	Hopkinton		
Member			
Submember			
Start Depth	85.00 ft	End Depth	225.00 ft
Contact Accuracy			
Penetration			
Primary Lithology	Ls/Dol Mixed	Percent	0
Secondary Lithology	Chert/Chalcedony	Percent	0
Tertiary Lithology		Percent	
Comments			
System	Silurian		
Series			
Group			
Formation	Blanding		
Member			
Submember			
Start Depth	225.00 ft	End Depth	265.00 ft
Contact Accuracy			
Penetration			
Primary Lithology	Ls/Dol Mixed	Percent	0
Secondary Lithology	Chert/Chalcedony	Percent	0
Tertiary Lithology		Percent	
Comments			
System	Silurian		
Series			
Group			
Formation	Tete Des Morts/Mosalem Undiff.		
Member			
Submember			
Start Depth	265.00 ft	End Depth	300.00 ft
Contact Accuracy			
Penetration			
Primary Lithology	Ls/Dol Mixed	Percent	0
Secondary Lithology	Shale	Percent	0
Tertiary Lithology	Chert/Chalcedony	Percent	0
Comments			
System	Ordovician		
Series			
Group			
Formation	Maquoketa		

Member			
Submember			
Start Depth	300.00 ft	End Depth	465.00 ft
Contact Accuracy			
Penetration			
Primary Lithology	Shale	Percent	0
Secondary Lithology	Ls/Dol Mixed	Percent	0
Tertiary Lithology		Percent	
Comments			

System	Ordovician		
Series			
Group			
Formation	Maquoketa		
Member	Elgin Limestone		
Submember			
Start Depth	465.00 ft	End Depth	495.00 ft
Contact Accuracy			
Penetration			
Primary Lithology	Shale	Percent	0
Secondary Lithology	Dolomite	Percent	0
Tertiary Lithology		Percent	
Comments			

System	Ordovician		
Series			
Group	Galena		
Formation	Dubuque		
Member			
Submember			
Start Depth	495.00 ft	End Depth	535.00 ft
Contact Accuracy			
Penetration			
Primary Lithology	Ls/Dol Mixed	Percent	0
Secondary Lithology	Dolomite	Percent	0
Tertiary Lithology		Percent	
Comments			

System	Ordovician		
Series			
Group	Galena		
Formation	Wise Lake		
Member			
Submember			
Start Depth	535.00 ft	End Depth	610.00 ft
Contact Accuracy			
Penetration			
Primary Lithology	Dolomite	Percent	0
Secondary Lithology	Ls/Dol Mixed	Percent	0

Tertiary Lithology		Percent	
Comments			
System	Ordovician		
Series			
Group	Galena		
Formation	Dunleith		
Member			
Submember			
Start Depth	610.00 ft	End Depth	710.00 ft
Contact Accuracy			
Penetration			
Primary Lithology	Ls/Dol Mixed	Percent	0
Secondary Lithology	Chert/Chalcedony	Percent	0
Tertiary Lithology		Percent	
Comments			
System	Ordovician		
Series			
Group	Galena		
Formation	Decorah		
Member			
Submember			
Start Depth	710.00 ft	End Depth	756.00 ft
Contact Accuracy			
Penetration			
Primary Lithology	Ls/Dol Mixed	Percent	0
Secondary Lithology	Shale	Percent	0
Tertiary Lithology		Percent	
Comments			
System	Ordovician		
Series			
Group	Galena		
Formation	Platteville		
Member			
Submember			
Start Depth	756.00 ft	End Depth	810.00 ft
Contact Accuracy			
Penetration			
Primary Lithology	Limestone	Percent	0
Secondary Lithology	Ls/Dol Mixed	Percent	0
Tertiary Lithology		Percent	
Comments			
System	Ordovician		
Series			
Group	Ancell		
Formation	Glenwood		

Member			
Submember			
Start Depth	810.00 ft	End Depth	820.00 ft
Contact Accuracy			
Penetration			
Primary Lithology	Shale	Percent	100
Secondary Lithology		Percent	
Tertiary Lithology		Percent	
Comments			

System	Ordovician		
Series			
Group	Ancell		
Formation	St. Peter Sandstone		
Member			
Submember			
Start Depth	820.00 ft	End Depth	870.00 ft
Contact Accuracy			
Penetration			
Primary Lithology	Sandstone	Percent	100
Secondary Lithology		Percent	
Tertiary Lithology		Percent	
Comments			

System	Ordovician		
Series			
Group	Prairie Du Chien		
Formation	Shakopee		
Member			
Submember			
Start Depth	870.00 ft	End Depth	1015.00 ft
Contact Accuracy			
Penetration			
Primary Lithology	Dolomite	Percent	0
Secondary Lithology	Sandstone	Percent	0
Tertiary Lithology	Chert/Chalcedony	Percent	0
Comments			

System	Ordovician		
Series			
Group	Prairie Du Chien		
Formation	Oneota		
Member			
Submember			
Start Depth	1015.00 ft	End Depth	1150.00 ft
Contact Accuracy			
Penetration			
Primary Lithology	Dolomite	Percent	0
Secondary Lithology	Chert/Chalcedony	Percent	0

Tertiary Lithology		Percent	
Comments			
System	Cambrian		
Series			
Group			
Formation	Jordan		
Member			
Submember			
Start Depth	1150.00 ft	End Depth	1235.00 ft
Contact Accuracy			
Penetration			
Primary Lithology	Sandstone	Percent	0
Secondary Lithology	Dolomite	Percent	0
Tertiary Lithology		Percent	
Comments			

Water Production Information

Date	01/01/1978	Start Time	
Aquifer	Unknown		
Static Water Level	305.00 ft	Yield	230 gallons per minute
Pumping Water Level	317 ft	Yield Method	Unknown
Measurement	Unknown	Pump Test	Yes
Pump Method	Unknown	Duration	0 mins
Comments			

Chip Storage Information

Date	11/27/1978		
Storage	PL9-792->795	Bin	
Number of Boxes	4	Number of Samples	241
Sample Intervals	5	Sample Gaps	45-75
Sample Top	0 ft	Sample Bottom	1235 ft
Washed Top	75 ft	Washed Bottom	1235 ft
Duplicate Storage			
Comments			

<https://www.iuhr.uiowa.edu/igs/geosam/well/25433/general-information>