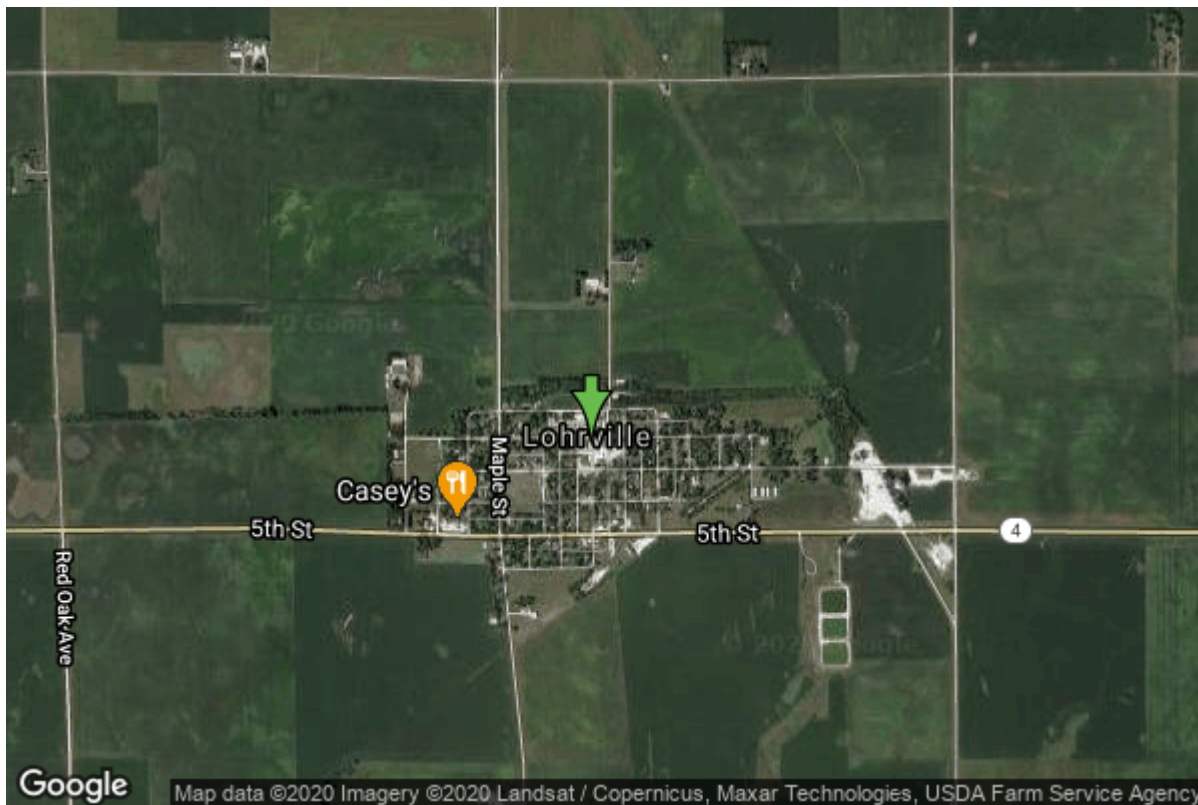


Well W#25434 Information



Date Received		State	Iowa
Owner Name	Lohrville, City Of	County	Calhoun
Alt Name	#4	Quadrangle	Lohrville, Iowa
WNumber	25434	Township	T86N
PWTS ID	0	Range	R32W
PWS ID	1389001	Section	11
Storet ID	0	Quarter	SW SW NE
SDWIS ID	2408034	Latitude	42.2700380000
USGS ID	0	Longitude	-94.5477320000
Project	Source Water Protection	Accuracy	
Operator	Unknown	UTM X	372362
		UTM Y	4680919

Site Type	Drilled hole	Drilling Company	Well Service Co.
Well Status	Not Used	Drilling Date	09/13/1978
Field Located	No	Drilling Method	Rotary
Elevation	1150 ft	Bedrock Depth	205 ft
Elevation Accuracy	Digital Elevation Model Accurate to 5 ft	Well Depth	901 ft
Landscape Position	Unknown	Total Depth	900 ft
		Well Types	Municipal, Public Supply
		Aquifers	Mississippian

Log Information

Date	10/21/2009
Log Types	Strip log

Prepared By Bounk, Michael Joseph
Comments

Date
Log Types Drillers log
Prepared By Lohrville, City Of
Comments

Stratigraphy Information

System Quaternary
Series
Group
Formation
Member
Submember
Start Depth 0.00 ft **End Depth** 205.00 ft
Contact Accuracy
Penetration
Primary Lithology Sand And Gravel **Percent** 100
Secondary Lithology Unknown **Percent** 0
Tertiary Lithology Unknown **Percent** 0
Comments

System Quaternary
Series Pleistocene Series
Group
Formation
Member
Submember
Start Depth 205.00 ft **End Depth** 245.00 ft
Contact Accuracy
Penetration
Primary Lithology Till **Percent** 0
Secondary Lithology **Percent**
Tertiary Lithology **Percent**
Comments

System Pennsylvanian (Subsystem Of Carboniferous System)
Series
Group
Formation
Member
Submember
Start Depth 245.00 ft **End Depth** 530.00 ft
Contact Accuracy
Penetration
Primary Lithology Sandstone **Percent** 52

Secondary Lithology	Shale	Percent	30
Tertiary Lithology	Limestone	Percent	18
Comments			

System	Mississippian (Subsystem Of Carboniferous System)		
Series			
Group	Augusta		
Formation			
Member			
Submember			
Start Depth	530.00 ft	End Depth	625.00 ft
Contact Accuracy			
Penetration			
Primary Lithology	Limestone	Percent	80
Secondary Lithology	Dolomite	Percent	15
Tertiary Lithology	Sandstone	Percent	5
Comments			

System	Mississippian (Subsystem Of Carboniferous System)		
Series			
Group	Sub-Augusta		
Formation	Gilmore City		
Member			
Submember			
Start Depth	625.00 ft	End Depth	750.00 ft
Contact Accuracy			
Penetration			
Primary Lithology	Limestone	Percent	100
Secondary Lithology		Percent	
Tertiary Lithology		Percent	
Comments			

System	Mississippian (Subsystem Of Carboniferous System)		
Series			
Group	Sub-Augusta		
Formation	Maynes Creek		
Member			
Submember			
Start Depth	750.00 ft	End Depth	888.00 ft
Contact Accuracy			
Penetration			
Primary Lithology	Dolomite	Percent	85
Secondary Lithology	Chert/Chalcedony	Percent	12
Tertiary Lithology	Limestone	Percent	3
Comments			

System	Mississippian (Subsystem Of Carboniferous System)		
Series			
Group	North Hill		

Formation	Chapin		
Member			
Submember			
Start Depth	888.00 ft	End Depth	895.00 ft
Contact Accuracy			
Penetration			
Primary Lithology	Limestone	Percent	100
Secondary Lithology		Percent	
Tertiary Lithology		Percent	
Comments			

System	Mississippian (Subsystem Of Carboniferous System)		
Series			
Group	North Hill		
Formation	Prospect Hill		
Member			
Submember			
Start Depth	895.00 ft	End Depth	900.00 ft
Contact Accuracy			
Penetration			
Primary Lithology	Siltstone	Percent	100
Secondary Lithology		Percent	
Tertiary Lithology		Percent	
Comments			

Chip Storage Information

Date	12/01/1978		
Storage	PL9-796->798	Bin	
Number of Boxes	3	Number of Samples	174
Sample Intervals	0	Sample Gaps	0-30
Sample Top	30 ft	Sample Bottom	900 ft
Washed Top	350 ft	Washed Bottom	900 ft
Duplicate Storage			
Comments			

<https://www.iihr.uiowa.edu/igs/geosam/well/25434/general-information>