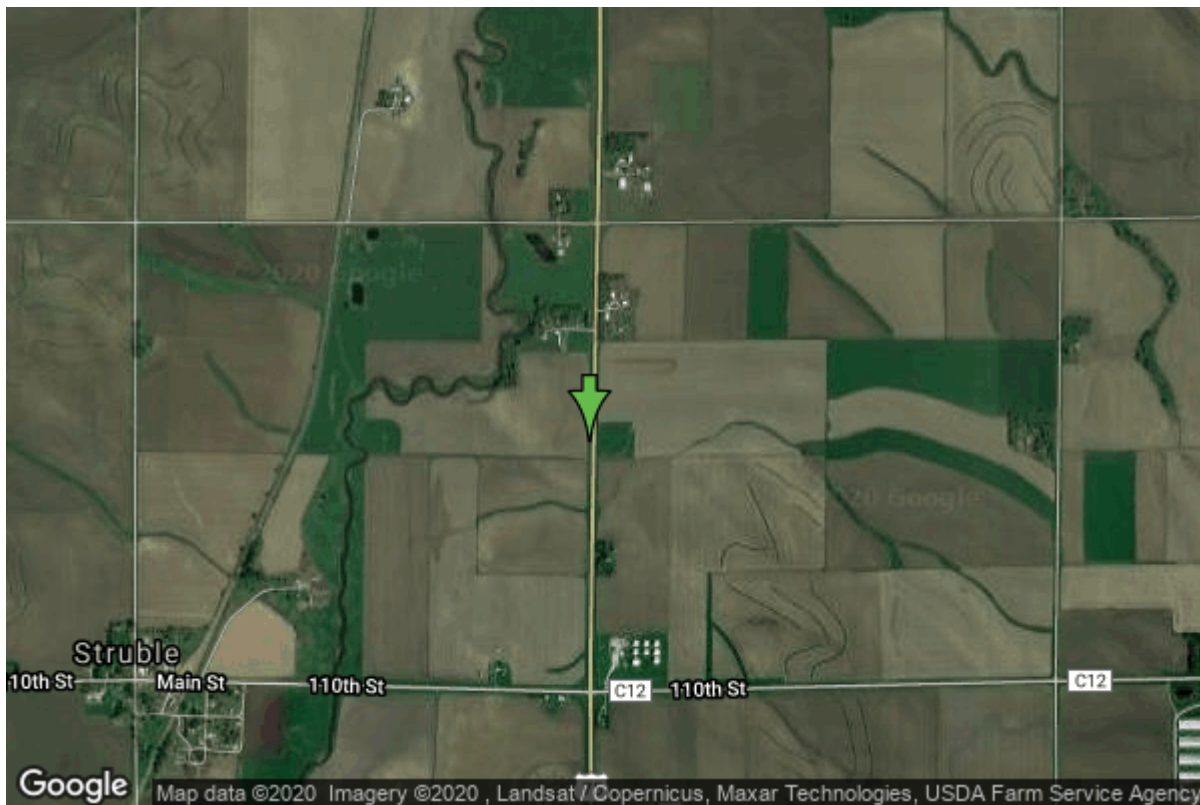


# Well W#25487 Information



<b>Date Received</b>		<b>State</b>	Iowa
<b>Owner Name</b>	Southern Sioux County	<b>County</b>	Plymouth
	Rws	<b>Quadrangle</b>	Maurice, Iowa
<b>Alt Name</b>	D-1	<b>Township</b>	T93N
<b>WNumber</b>	25487	<b>Range</b>	R45W
<b>PWTS ID</b>	0	<b>Section</b>	4
<b>PWS ID</b>	8400733	<b>Quarter</b>	NW SW SW
<b>Storet ID</b>	0	<b>Latitude</b>	42.9024510000
<b>SDWIS ID</b>	2410396	<b>Longitude</b>	-96.1747530000
<b>USGS ID</b>	0	<b>Accuracy</b>	
<b>Project</b>	Source Water Protection	<b>UTM X</b>	240812
<b>Operator</b>	Unknown	<b>UTM Y</b>	4754873

---

<b>Site Type</b>	Drilled hole	<b>Drilling Company</b>	Layne Western - Ia.
<b>Well Status</b>	Active	<b>Drilling Date</b>	06/26/1979
<b>Field Located</b>	No	<b>Drilling Method</b>	Rotary
<b>Elevation</b>	1269 ft	<b>Bedrock Depth</b>	121 ft
<b>Elevation Accuracy</b>	Topo Map Accurate to 2 ft	<b>Well Depth</b>	448 ft
<b>Landscape Position</b>	Unknown	<b>Total Depth</b>	448 ft
		<b>Well Types</b>	Public Supply, Rural Water District
		<b>Aquifers</b>	Dakota/Cretaceous

# Casing Construction Information

<b>Date</b>	06/26/1979	<b>Casing Type</b>	Unknown
<b>Start Depth</b>	0.00 ft	<b>End Depth</b>	0.00 ft
<b>Diameter</b>	6.00 in	<b>Amount</b>	10.00 ft
<b>Comments</b>			

---

<b>Date</b>	06/26/1979	<b>Casing Type</b>	PVC
<b>Start Depth</b>	0.00 ft	<b>End Depth</b>	368.00 ft
<b>Diameter</b>	3.00 in	<b>Amount</b>	0.00 ft
<b>Comments</b>			

# Screen Construction Information

<b>Date</b>	06/26/1979	<b>Slot Size</b>	0.00
<b>Screen Type</b>	Unknown	<b>End Depth</b>	448.00 ft
<b>Start Depth</b>	368.00 ft	<b>Amount</b>	80 ft
<b>Diameter</b>	3.00 in		
<b>Comments</b>			

# Log Information

<b>Date</b>	10/15/1979
<b>Log Types</b>	Strip log
<b>Prepared By</b>	Bouck, Michael Joseph
<b>Comments</b>	

---

<b>Date</b>	06/26/1979
<b>Log Types</b>	Drillers log
<b>Prepared By</b>	Layne Western - Ia.
<b>Comments</b>	

---

<b>Date</b>	06/26/1979
<b>Log Types</b>	Spontaneous Potential Log, Resistivity Log
<b>Prepared By</b>	Layne Western - Ia.
<b>Comments</b>	

---

<b>Date</b>	
<b>Log Types</b>	Unknown
<b>Prepared By</b>	
<b>Comments</b>	

# Stratigraphy Information

<b>System</b>	Quaternary		
<b>Series</b>	Holocene Series		
<b>Group</b>			
<b>Formation</b>	Deforest		
<b>Member</b>			
<b>Submember</b>			
<b>Start Depth</b>	0.00 ft	<b>End Depth</b>	10.00 ft
<b>Contact Accuracy</b>			
<b>Penetration</b>			
<b>Primary Lithology</b>	Clay	<b>Percent</b>	100
<b>Secondary Lithology</b>	Soil Or Fill	<b>Percent</b>	0
<b>Tertiary Lithology</b>		<b>Percent</b>	
<b>Comments</b>			

---

<b>System</b>	Quaternary		
<b>Series</b>	Pleistocene Series		
<b>Group</b>	Wisconsinan Episode		
<b>Formation</b>	Noah Creek		
<b>Member</b>			
<b>Submember</b>			
<b>Start Depth</b>	10.00 ft	<b>End Depth</b>	70.00 ft
<b>Contact Accuracy</b>			
<b>Penetration</b>			
<b>Primary Lithology</b>	Sand And Gravel	<b>Percent</b>	100
<b>Secondary Lithology</b>		<b>Percent</b>	
<b>Tertiary Lithology</b>		<b>Percent</b>	
<b>Comments</b>			

---

<b>System</b>	Quaternary		
<b>Series</b>	Pleistocene Series		
<b>Group</b>	Pre-Illinoian		
<b>Formation</b>			
<b>Member</b>			
<b>Submember</b>			
<b>Start Depth</b>	70.00 ft	<b>End Depth</b>	110.00 ft
<b>Contact Accuracy</b>			
<b>Penetration</b>			
<b>Primary Lithology</b>	Till - Oxidized And Unleached	<b>Percent</b>	100
<b>Secondary Lithology</b>		<b>Percent</b>	
<b>Tertiary Lithology</b>		<b>Percent</b>	
<b>Comments</b>			

---

<b>System</b>	Quaternary		
<b>Series</b>	Pleistocene Series		
<b>Group</b>	Pre-Illinoian		

<b>Formation Member Submember</b>			
<b>Start Depth</b>	110.00 ft	<b>End Depth</b>	120.00 ft
<b>Contact Accuracy Penetration</b>			
<b>Primary Lithology</b>	Till - Unoxidized And Unleached	<b>Percent</b>	100
<b>Secondary Lithology</b>		<b>Percent</b>	
<b>Tertiary Lithology</b>		<b>Percent</b>	
<b>Comments</b>			

---

<b>System Series</b>	Cretaceous		
<b>Group Formation Member Submember</b>	Fort Benton ("Lower Colorado ") Dakota Woodbury		
<b>Start Depth</b>	120.00 ft	<b>End Depth</b>	290.00 ft
<b>Contact Accuracy Penetration</b>			
<b>Primary Lithology</b>	Unknown	<b>Percent</b>	0
<b>Secondary Lithology</b>	Unknown	<b>Percent</b>	0
<b>Tertiary Lithology</b>	Unknown	<b>Percent</b>	0
<b>Comments</b>			

---

<b>System Series</b>	Cretaceous		
<b>Group Formation Member Submember</b>	Fort Benton ("Lower Colorado ") Dakota Nishnabotna		
<b>Start Depth</b>	290.00 ft	<b>End Depth</b>	445.00 ft
<b>Contact Accuracy Penetration</b>			
<b>Primary Lithology</b>		<b>Percent</b>	
<b>Secondary Lithology</b>		<b>Percent</b>	
<b>Tertiary Lithology</b>		<b>Percent</b>	
<b>Comments</b>			

---

<b>System Series</b>	Ordovician		
<b>Group Formation Member Submember</b>	Galena		
<b>Start Depth</b>	445.00 ft	<b>End Depth</b>	448.00 ft
<b>Contact Accuracy Penetration</b>			

Primary Lithology	Percent
Secondary Lithology	Percent
Tertiary Lithology	Percent
Comments	

## Water Production Information

<b>Date</b>	09/24/2015	<b>Start Time</b>	
<b>Aquifer</b>		<b>Yield</b>	492 gallons per minute
<b>Static Water Level</b>	98.00 ft	<b>Yield Method</b>	Unknown
<b>Pumping Water Level</b>	116 ft	<b>Pump Test</b>	No
<b>Measurement</b>	Unknown	<b>Duration</b>	780 mins
<b>Pump Method</b>	Unknown		
<b>Comments</b>	Reported on 2015 DNR Dakota survey.		

---

<b>Date</b>	07/05/1979	<b>Start Time</b>	
<b>Aquifer</b>	Unknown	<b>Yield</b>	0 gallons per minute
<b>Static Water Level</b>	39.00 ft	<b>Yield Method</b>	Unknown
<b>Pumping Water Level</b>	0 ft	<b>Pump Test</b>	Yes
<b>Measurement</b>	Unknown	<b>Duration</b>	0 mins
<b>Pump Method</b>	Unknown		
<b>Comments</b>			

## Chip Storage Information

<b>Date</b>	08/10/1979	<b>Bin</b>	
<b>Storage</b>	OD1-006	<b>Number of Samples</b>	45
<b>Number of Boxes</b>	1	<b>Sample Gaps</b>	
<b>Sample Intervals</b>	10	<b>Sample Bottom</b>	448 ft
<b>Sample Top</b>	0 ft	<b>Washed Bottom</b>	0 ft
<b>Washed Top</b>	0 ft		
<b>Duplicate Storage</b>			
<b>Comments</b>			

<https://www.iihr.uiowa.edu/igs/geosam/well/25487/general-information>